

WOOD GUESS RAIL REQUIRED

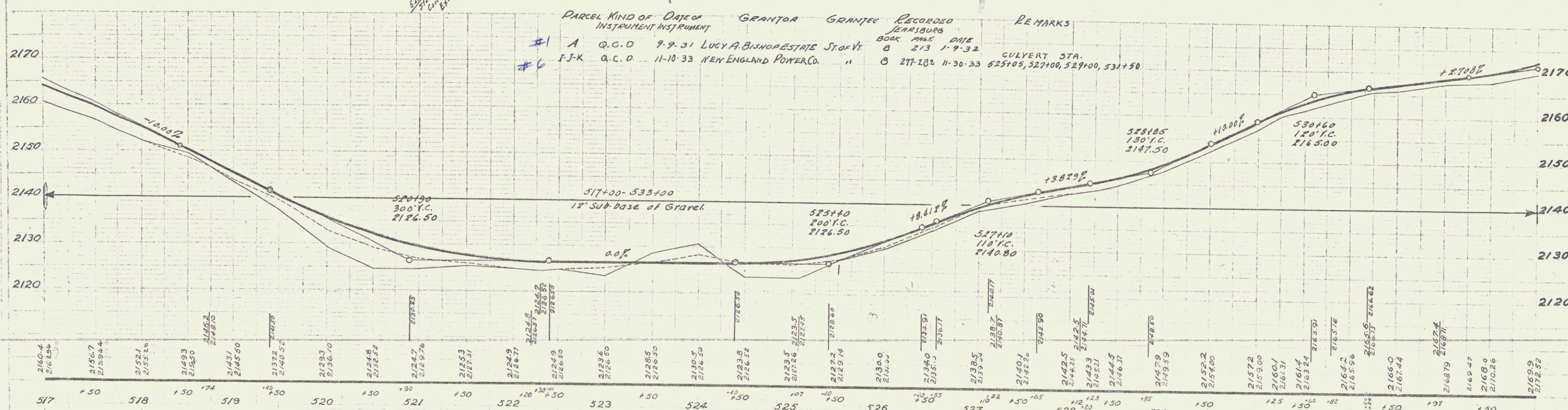
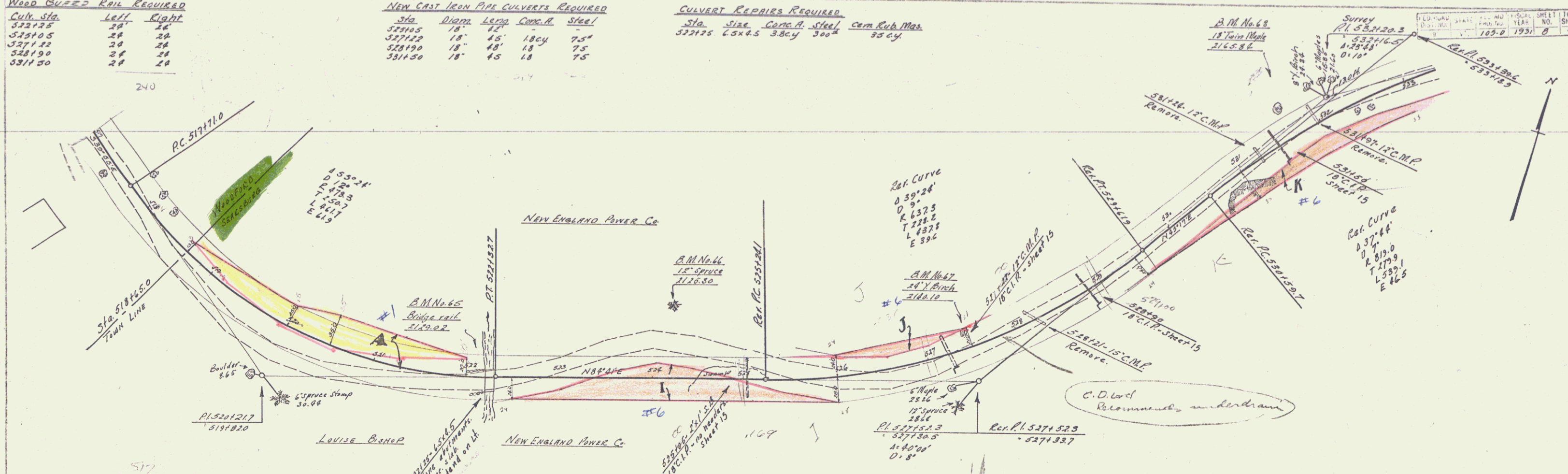
Culv. Sta.	Left	Right
522125	24'	26'
525105	24'	24'
527122	24'	24'
528190	24'	24'
531120	24'	24'

NEW CAST IRON PIPE CULVERTS REQUIRED

Sta.	Diam.	Length	Comp. H.	Steel
525105	18"	12'		
527122	18"	45'	18cy	75'
528190	18"	48'	18	75'
531120	18"	45'	18	75'

CULVERT REPAIRS REQUIRED

Sta.	Size	Comp. H.	Steel	Cem. Rub. Mas.
522125	6x4.5	38cy	300'	35cy



PARCEL #	KIND OF INSTRUMENT	DATE	GRANTOR	GRANTEE	RECORDED	REMARKS
#1	A. Q.C.D.	9-9-31	LUCY A. BISHOP	ESTATE STAFF	BOOK 213 PAGE 32	
#6	F.J.K. Q.C.D.	11-10-33	NEW ENGLAND POWER CO.		BOOK 217 PAGE 23	CULVERT STA. 525105, 527100, 529100, 531120

B.M. No. 65. Point spot on rail of conc. bridge, 6th left of Sta. 522120. Elev. 2129.02
 B.M. No. 66. Spike in root of 12' Spruce, 80th left of Sta. 525105. Elev. 2125.30
 B.M. No. 67. Spike in root of 28' Yellow Birch, 10th left of Sta. 527122. Elev. 2140.10
 B.M. No. 68. Spike in trunk of 18' Twin Maple, 29th left of Sta. 531120. Elev. 2165.84

SERIES F- No. 105-D
 SHEET B OF 47