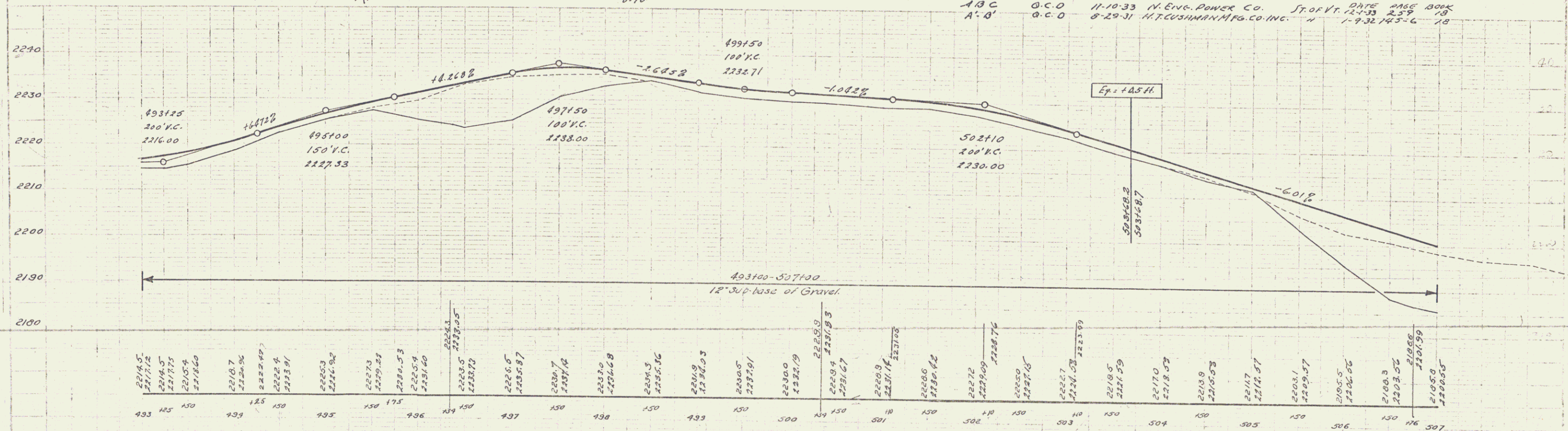
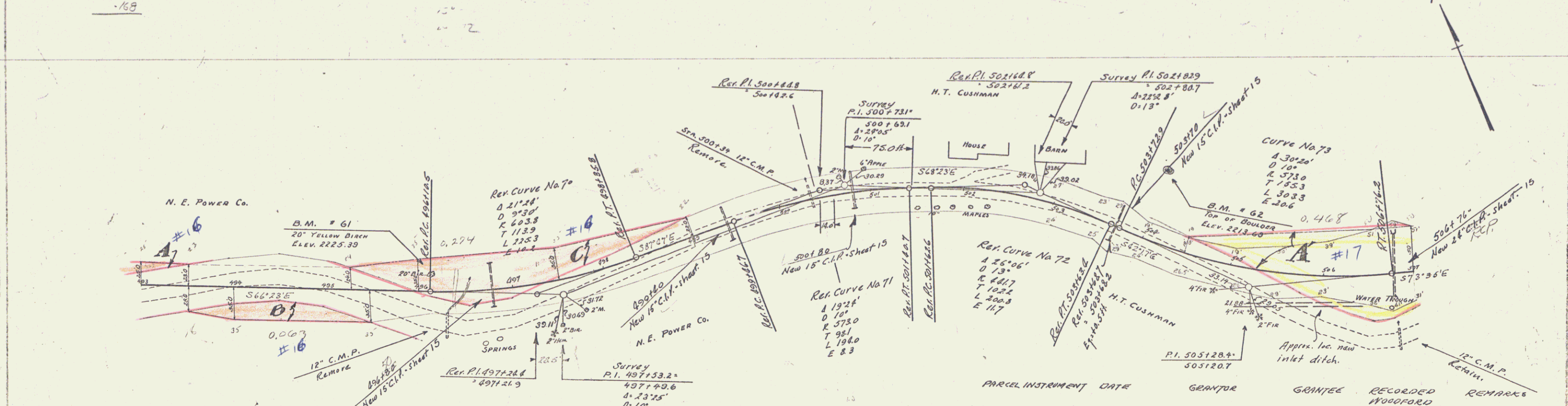


WOOD GUARD RAIL REQUIRED			CABLE GUARD RAIL REQUIRED			NEW CAST IRON PIPE CULVERTS REQUIRED						
Cul. Sta.	Left	Right	Sta.	Length	Cost	Pay Item	Sta.	Diem.	Length	Conc. C/C	Steel	Conc. C/A
496180		39'	495160-498100 LK	240'	40	220	496180	15"	57'	3.04	33'	
499180	24'	24'	505120-505180 LK	289'	40	220	499140	15"	39'	1.54	12'	
500180	24'	24'	505170-507150 MK	176'	40	216	500180	15"	42'	1.54	17'	
503170	24'	24'				874	503170	15"	42'	1.54	17'	
							506176	24"	72'		54'	24'

FED. ROAD DIST. NO.	STATE	SEC. NO.	FISCAL YEAR	SHEET NO.	TOTAL SHEETS
3	VT	1050	1931	6	67



B.M. No. 61. 20' Yellow Birch, 16th left of Sta. 496112. Elev. 2225.39
 B.M. No. 62. Top of Boulder, 76th left of Sta. 505196. Elev. 2213.60

PARCEL	INSTRUMENT	DATE	GRANTOR	GRANTEE	RECORDED	REMARKS
A-B-C	Q.C.D	11-10-33	N. ENG. POWER CO.	ST. OF VT.	12-33	19
A'-B'	Q.C.D	8-29-31	M.T. CUSHMAN	MFG. CO. INC.	1-9-32	145-6 18