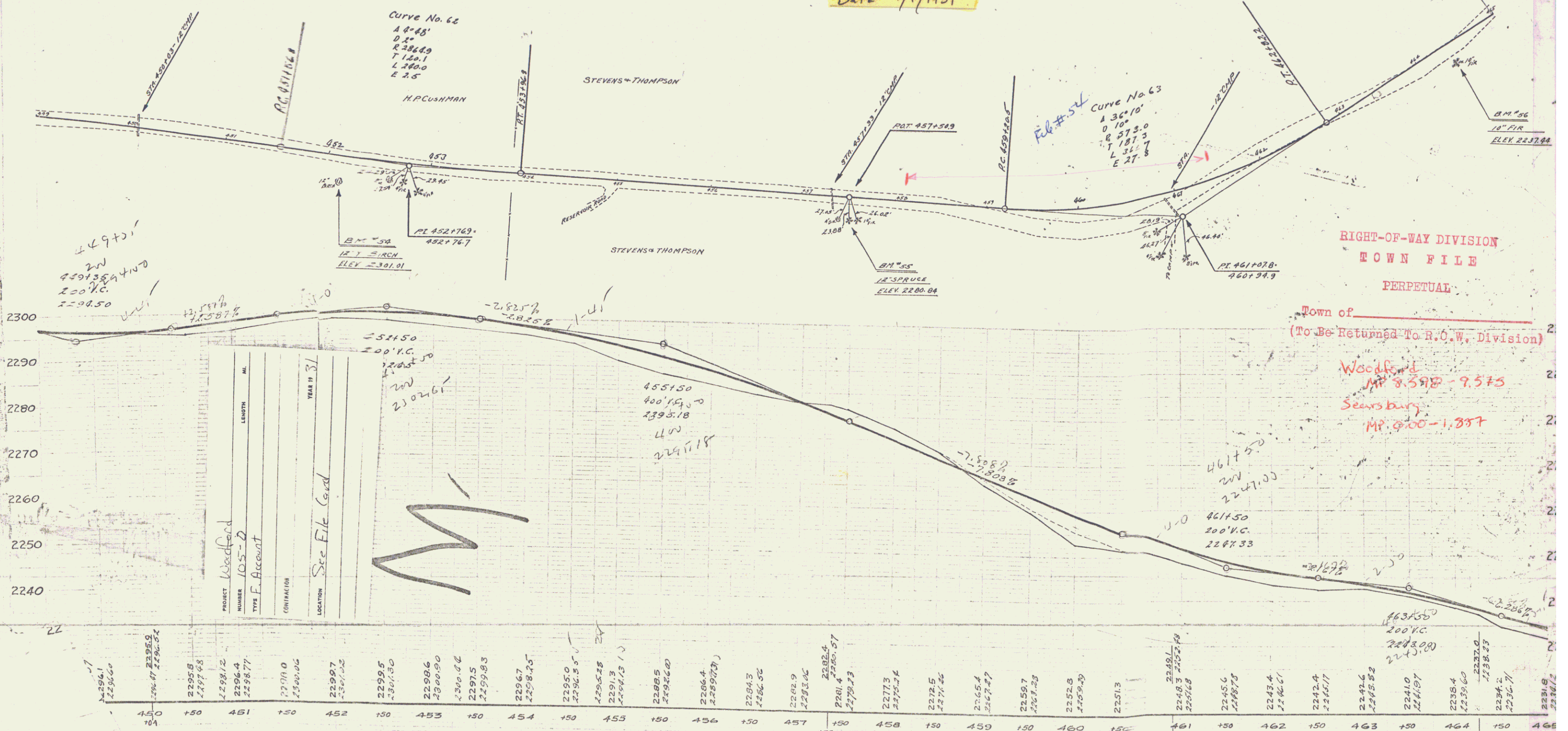


TOWNS OF
WOODFORD-SEARSBURG
 Project F 105-D
 Pin # 998825
 Route VTA
 Date 1/1/1931

GENERAL STATE PUBLIC WORKS
 DIVISION
 185-D 1931



2300
2290
2280
2270
2260
2250
2240

PROJECT	NUMBER	TYPE	CONTRACTOR	LOCATION	YEAR
Woodford	105-D	F. Account			31

M

STATION	ELEVATION	STATION	ELEVATION	STATION	ELEVATION	STATION	ELEVATION
450	2296.1	451	2295.8	452	2295.5	453	2295.2
454	2294.9	455	2294.6	456	2294.3	457	2294.0
458	2292.7	459	2292.4	460	2292.1	461	2291.8
462	2289.7	463	2289.4	464	2289.1	465	2288.8
466	2286.6	467	2286.3	468	2286.0	469	2285.7
470	2282.6	471	2282.3	472	2282.0	473	2281.7
475	2278.6	476	2278.3	477	2278.0	478	2277.7
480	2274.6	481	2274.3	482	2274.0	483	2273.7
485	2270.6	486	2270.3	487	2270.0	488	2269.7
490	2266.6	491	2266.3	492	2266.0	493	2265.7
495	2262.6	496	2262.3	497	2262.0	498	2261.7
500	2258.6	501	2258.3	502	2258.0	503	2257.7
505	2254.6	506	2254.3	507	2254.0	508	2253.7
510	2250.6	511	2250.3	512	2250.0	513	2249.7
515	2246.6	516	2246.3	517	2246.0	518	2245.7
520	2242.6	521	2242.3	522	2242.0	523	2241.7
525	2238.6	526	2238.3	527	2238.0	528	2237.7
530	2234.6	531	2234.3	532	2234.0	533	2233.7
535	2230.6	536	2230.3	537	2230.0	538	2229.7
540	2226.6	541	2226.3	542	2226.0	543	2225.7
545	2222.6	546	2222.3	547	2222.0	548	2221.7
550	2218.6	551	2218.3	552	2218.0	553	2217.7
555	2214.6	556	2214.3	557	2214.0	558	2213.7
560	2210.6	561	2210.3	562	2210.0	563	2209.7
565	2206.6	566	2206.3	567	2206.0	568	2205.7
570	2202.6	571	2202.3	572	2202.0	573	2201.7
575	2198.6	576	2198.3	577	2198.0	578	2197.7
580	2194.6	581	2194.3	582	2194.0	583	2193.7
585	2190.6	586	2190.3	587	2190.0	588	2189.7
590	2186.6	591	2186.3	592	2186.0	593	2185.7
595	2182.6	596	2182.3	597	2182.0	598	2181.7
600	2178.6	601	2178.3	602	2178.0	603	2177.7
605	2174.6	606	2174.3	607	2174.0	608	2173.7
610	2170.6	611	2170.3	612	2170.0	613	2169.7
615	2166.6	616	2166.3	617	2166.0	618	2165.7
620	2162.6	621	2162.3	622	2162.0	623	2161.7
625	2158.6	626	2158.3	627	2158.0	628	2157.7
630	2154.6	631	2154.3	632	2154.0	633	2153.7
635	2150.6	636	2150.3	637	2150.0	638	2149.7
640	2146.6	641	2146.3	642	2146.0	643	2145.7
645	2142.6	646	2142.3	647	2142.0	648	2141.7
650	2138.6	651	2138.3	652	2138.0	653	2137.7
655	2134.6	656	2134.3	657	2134.0	658	2133.7
660	2130.6	661	2130.3	662	2130.0	663	2129.7
665	2126.6	666	2126.3	667	2126.0	668	2125.7
670	2122.6	671	2122.3	672	2122.0	673	2121.7
675	2118.6	676	2118.3	677	2118.0	678	2117.7
680	2114.6	681	2114.3	682	2114.0	683	2113.7
685	2110.6	686	2110.3	687	2110.0	688	2109.7
690	2106.6	691	2106.3	692	2106.0	693	2105.7
695	2102.6	696	2102.3	697	2102.0	698	2101.7
700	2098.6	701	2098.3	702	2098.0	703	2097.7
705	2094.6	706	2094.3	707	2094.0	708	2093.7
710	2090.6	711	2090.3	712	2090.0	713	2089.7
715	2086.6	716	2086.3	717	2086.0	718	2085.7
720	2082.6	721	2082.3	722	2082.0	723	2081.7
725	2078.6	726	2078.3	727	2078.0	728	2077.7
730	2074.6	731	2074.3	732	2074.0	733	2073.7
735	2070.6	736	2070.3	737	2070.0	738	2069.7
740	2066.6	741	2066.3	742	2066.0	743	2065.7
745	2062.6	746	2062.3	747	2062.0	748	2061.7
750	2058.6	751	2058.3	752	2058.0	753	2057.7
755	2054.6	756	2054.3	757	2054.0	758	2053.7
760	2050.6	761	2050.3	762	2050.0	763	2049.7
765	2046.6	766	2046.3	767	2046.0	768	2045.7
770	2042.6	771	2042.3	772	2042.0	773	2041.7
775	2038.6	776	2038.3	777	2038.0	778	2037.7
780	2034.6	781	2034.3	782	2034.0	783	2033.7
785	2030.6	786	2030.3	787	2030.0	788	2029.7
790	2026.6	791	2026.3	792	2026.0	793	2025.7
795	2022.6	796	2022.3	797	2022.0	798	2021.7
800	2018.6	801	2018.3	802	2018.0	803	2017.7
805	2014.6	806	2014.3	807	2014.0	808	2013.7
810	2010.6	811	2010.3	812	2010.0	813	2009.7
815	2006.6	816	2006.3	817	2006.0	818	2005.7
820	2002.6	821	2002.3	822	2002.0	823	2001.7
825	1998.6	826	1998.3	827	1998.0	828	1997.7
830	1994.6	831	1994.3	832	1994.0	833	1993.7
835	1990.6	836	1990.3	837	1990.0	838	1989.7
840	1986.6	841	1986.3	842	1986.0	843	1985.7
845	1982.6	846	1982.3	847	1982.0	848	1981.7
850	1978.6	851	1978.3	852	1978.0	853	1977.7
855	1974.6	856	1974.3	857	1974.0	858	1973.7
860	1970.6	861	1970.3	862	1970.0	863	1969.7
865	1966.6	866	1966.3	867	1966.0	868	1965.7
870	1962.6	871	1962.3	872	1962.0	873	1961.7
875	1958.6	876	1958.3	877	1958.0	878	1957.7
880	1954.6	881	1954.3	882	1954.0	883	1953.7
885	1950.6	886	1950.3	887	1950.0	888	1949.7
890	1946.6	891	1946.3	892	1946.0	893	1945.7
895	1942.6	896	1942.3	897	1942.0	898	1941.7
900	1938.6	901	1938.3	902	1938.0	903	1937.7
905	1934.6	906	1934.3	907	1934.0	908	1933.7
910	1930.6	911	1930.3	912	1930.0	913	1929.7
915	1926.6	916	1926.3	917	1926.0	918	1925.7
920	1922.6	921	1922.3	922	1922.0	923	1921.7
925	1918.6	926	1918.3	927	1918.0	928	1917.7
930	1914.6	931	1914.3	932	1914.0	933	1913.7
935	1910.6	936	1910.3	937	1910.0	938	1909.7
940	1906.6	941	1906.3	942	1906.0	943	1905.7
945	1902.6	946	1902.3	947	1902.0	948	1901.7
950	1898.6	951	1898.3	952	1898.0	953	1897.7
955	1894.6	956	1894.3	957	1894.0	958	1893.7
960	1890.6	961	1890.3	962	1890.0	963	1889.7
965	1886.6	966	1886.3	967	1886.0	968	1885.7
970	1882.6	971	1882.3	972	1882.0	973	1881.7
975	1878.6	976	1878.3	977	1878.0	978	1877.7
980	1874.6	981	1874.3	982	1874.0	983	1873.7
985	1870.6	986	1870.3	987	1870.0	988	1869.7
990	1866.6	991	1866.3	992	1866.0	993	1865.7
995	1862.6	996	1862.3	997	1862.0	998	1861.7
1000	1858.6	1001	1858.3	1002	1858.0	1003	1857.7

12" Yellow Birch, 27 ft. right of Sta. 452+11.4, Elev. 2304.0
 12" Spruce, 14 ft. right of Sta. 457+5.3, Elev. 2280.84
 0" Fir, 19 ft. right of Sta. 464+37, Elev. 2237.44

SERIES F No 105-D
 SHEET 3 of 47