

INDEX OF SHEETS - USPW Project NRH 105-G (1935)

SHEET NO.	TITLE PAGE	
"	"	2 TYPICAL CROSS-SECTION OF IMPROVEMENT - BITUMINOUS MACADAM SURFACE COURSE
"	"	3 BANKING & WIDENING TABLES
"	"	5-11 PLAN & PROFILE SHEETS
"	"	12 STANDARD STRUCTURE SHEET 5-28 (Pipe Culverts)
"	"	13 " " " 5-29 (Box Culverts)
"	"	14 " " " 5-30 (Guard Rail)
"	"	15 " " " 5-31 (Boundary Markers)
"	"	16 " " " 5B-11 (Barricades, Signs & Lights)
"	"	27-49 CROSS SECTIONS

STATE PROJECT 105-5

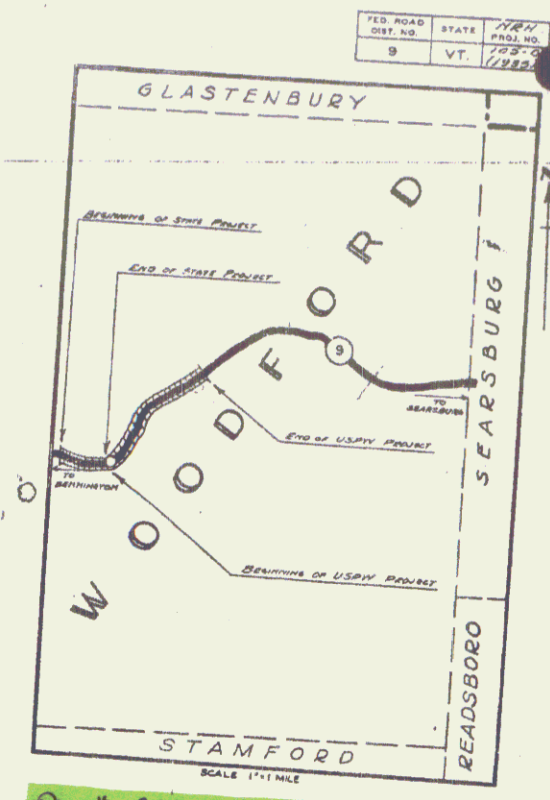
SHEET NO.	TITLE PAGE	
"	"	2 TYPICAL CROSS-SECTION OF IMPROVEMENT (BITUMINOUS MACADAM SURFACE COURSE)
"	"	3 BANKING & WIDENING TABLES
"	"	5-5 PLAN & PROFILE SHEETS
"	"	14 STANDARD STRUCTURE SHEET 5-30 (Guard Rail)
"	"	15 " " " 5-31 (Boundary Markers)
"	"	16 " " " 5B-11 (Barricades, Signs & Lights)
"	"	17-27 CROSS SECTIONS

STANDARD SHEETS 5-28 & 5-29 APPROVED BY THE CHIEF ENGINEER ON JULY 16, 1933.
 STANDARD SHEET 5-30 APPROVED BY THE CHIEF ENGINEER ON AUG. 15, 1933.
 STANDARD SHEET 5-31 APPROVED BY THE CHIEF ENGINEER ON JULY 25, 1934.

STATE OF VERMONT
 STATE HIGHWAY DEPARTMENT

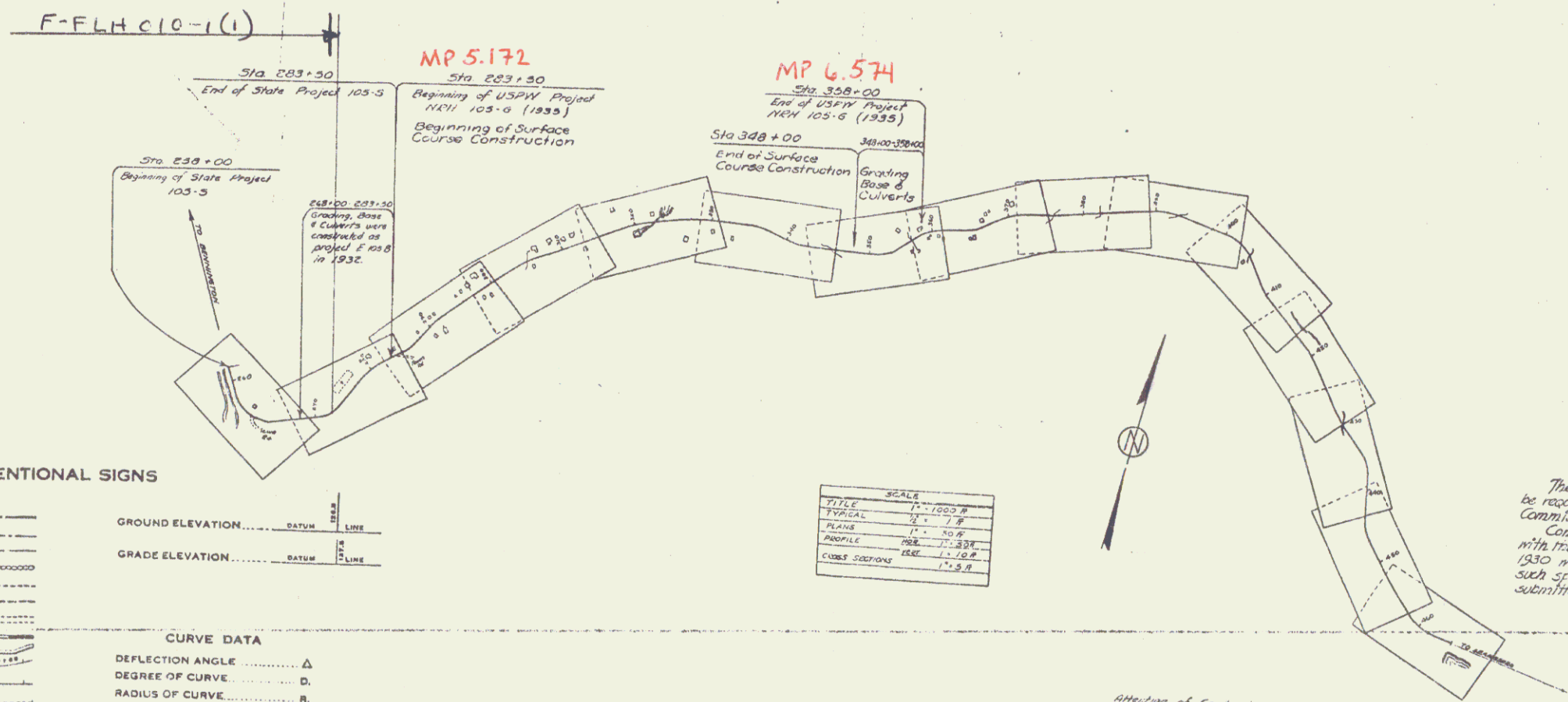
PLAN AND PROFILE OF PROPOSED
 STATE HIGHWAY
 U.S. PUBLIC WORKS HIGHWAY PROJECT

TOWN OF WOODFORD
 BENNINGTON-BRATTLEBORO ROAD
 FROM 100 FEET WEST OF SCHOOLHOUSE EASTERLY 1.409 MILES
 TO A POINT NEAR THE RESIDENCE OF NEWTON HAGAR
 LENGTH OF USPW NRH 105-G (1935) 7444.7 FT. = 1.409 MI.



Pin # 99R022
 Project: NRH 105-G
 Route: VT 9

RIGHT-OF-WAY DIVISION
 TOWN FILE
 PERPETUAL
 Town of VT 9
 (To Be Returned To R.O.W. Division)



CONVENTIONAL SIGNS

COUNTY LINE	GROUND ELEVATION
TOWN LINE	FENCE LINE
STONE WALL	UNFENCED PROPERTY
GUARD RAIL	RAILROAD
TRAVELED WAY	RETAINING WALL
RAILROAD	CENTER LINE
RETAINING WALL	SURVEY LINE
CULVERT	DROP INLET
TROLLEY POLE	POWER POLE
TELEPHONE POLE	TREES
HEDGE	

CURVE DATA

DEFLECTION ANGLE	Δ
DEGREE OF CURVE	D
RADIUS OF CURVE	R
TANGENT DISTANCE	T
LENGTH OF CURVE	L
EXTERNAL DISTANCE	E
POINT OF INTERSECTION	P. I.
POINT OF CURVE	P. C.
POINT OF TANGENT	P. T.
POINT ON TANGENT	P. O. T.

TITLE	SCALE
TYPICAL	1" = 100.0'
PLAN	1" = 100.0'
PROFILE	1" = 10.0'
CROSS SECTIONS	1" = 10.0'

Attention of Contractors is called to the fact that the State Highway Board reserves the right to extend this project westerly at the same contract price. Said cost of extension not to exceed 2.5% of the amount of the contract.

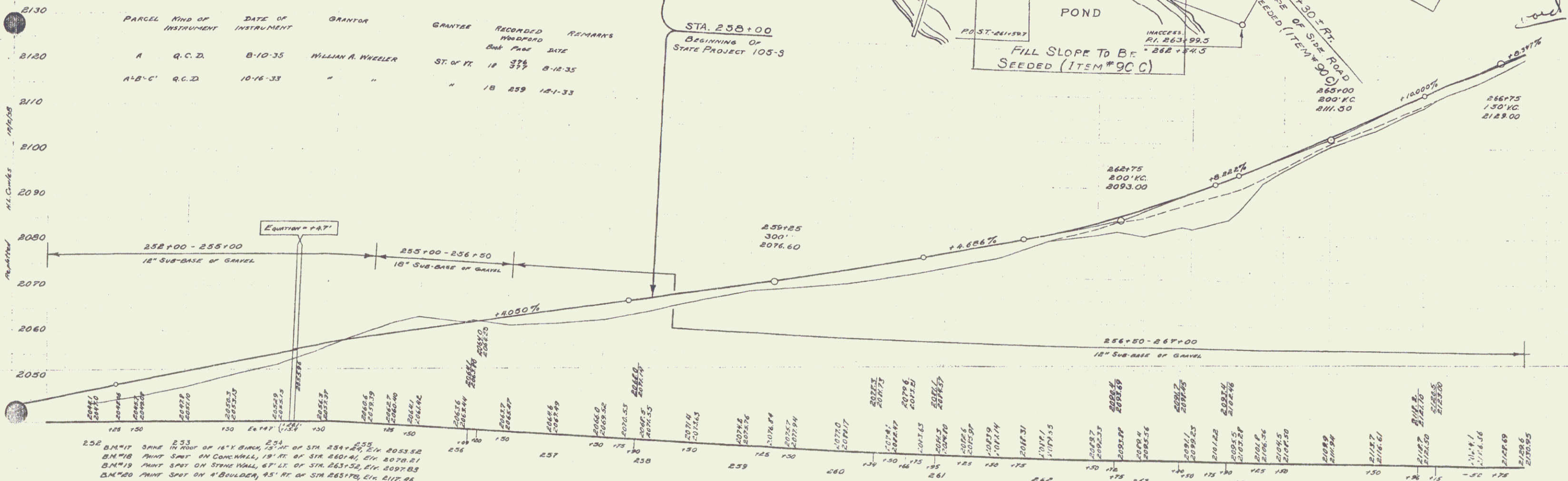
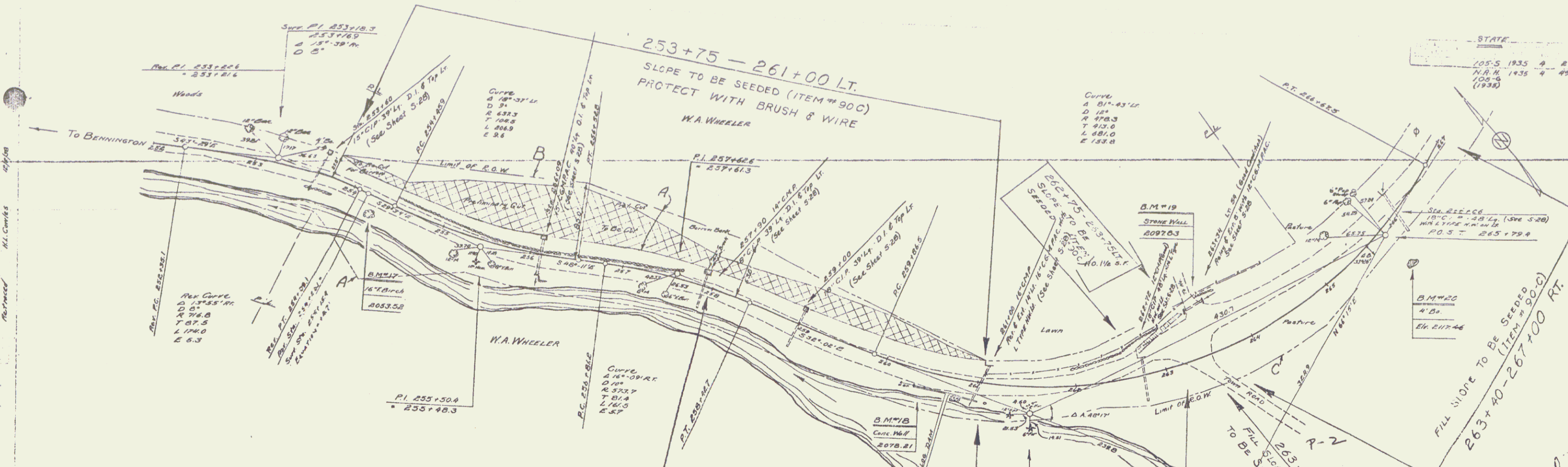
These plans are subject to such revisions as may be required by the Bureau of Public Roads or the Commissioner of Highways.
 Construction is to be carried on in accordance with the Standard Road & Bridge Specifications of 1930 with all subsequent approved revisions and such specifications and special provisions as are submitted with the plans.

APPROVED: Sept. 10, 1934
 H.C. [Signature]
 COMMISSIONER

RECOMMENDED [Signature]
 DISTRICT ENGINEER
 RECOMMENDED FOR APPROVAL [Signature]
 CHIEF ENGINEER
 APPROVED [Signature]
 BUREAU OF PUBLIC ROADS

CORRECT [Signature]
 SHEET 1

STATE
 105-5 1935 A 27
 N.R.N. 1435 4 29
 100-5
 (1938)

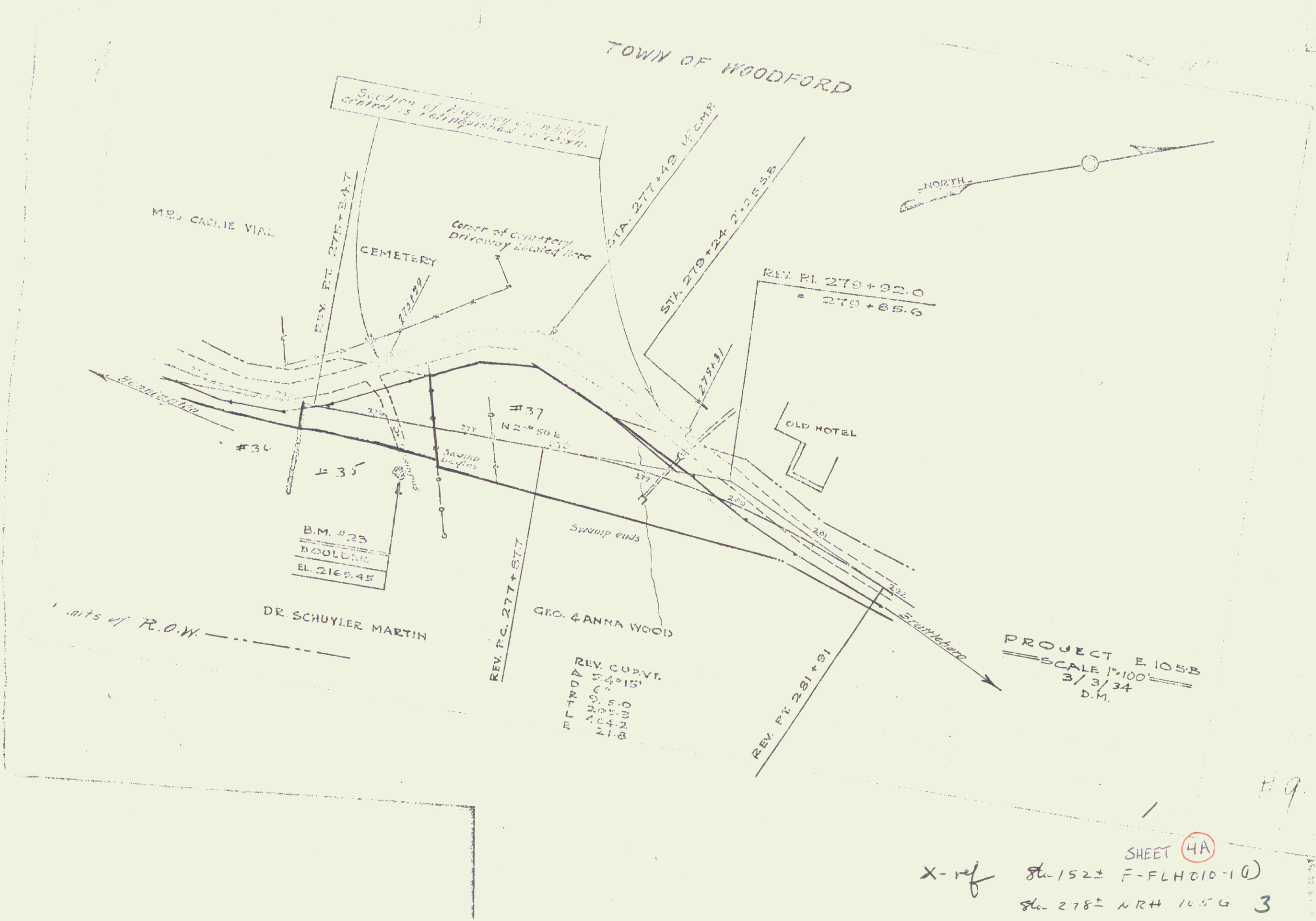
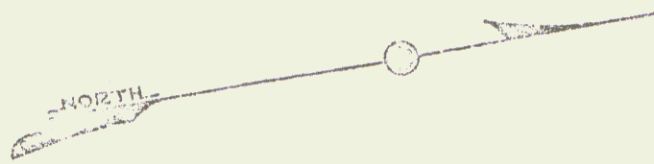


PARCEL	KIND OF INSTRUMENT	DATE OF INSTRUMENT	GRANTOR	GRANTEE	RECORDED	REMARKS
A	Q.C.D.	8-10-35	WILLIAM A. WHEELER	ST. OF PK 18 377	8-12-35	
A-B-C	Q.C.D.	10-16-33	"	"	18 259 12-1-33	

252 B.M.#17 SPINE IN ROOF OF 16' X 8' BRN. 75' HT. OF STA. 254+20, 2 1/4" 2053.52
 253 B.M.#18 PAINT SPOT ON CONC. WALL, 19' HT. OF STA. 250+40, 6" 2078.21
 254 B.M.#19 PAINT SPOT ON STONE WALL, 67' HT. OF STA. 263+20, STA. 2097.83
 255 B.M.#20 PAINT SPOT ON 'A' BULLDOZER, 45' HT. OF STA. 263+70, 6" 2117.46

SHEET 25 SHEET 4 OF 27
 SHEET 25 N.R.N. 1435-5
 SHEET 4 OF 29

TOWN OF WOODFORD



Section of Highway on which control is relinquished to State.

Center of Cemetery driveway located here

Mrs. Cassie Vial

CEMETERY

OLD HOTEL

DR. SCHUYLER MARTIN

GEO. & ANNA WOOD

PROJECT E 105B
SCALE 1"=100'
3/3/34
D.M.

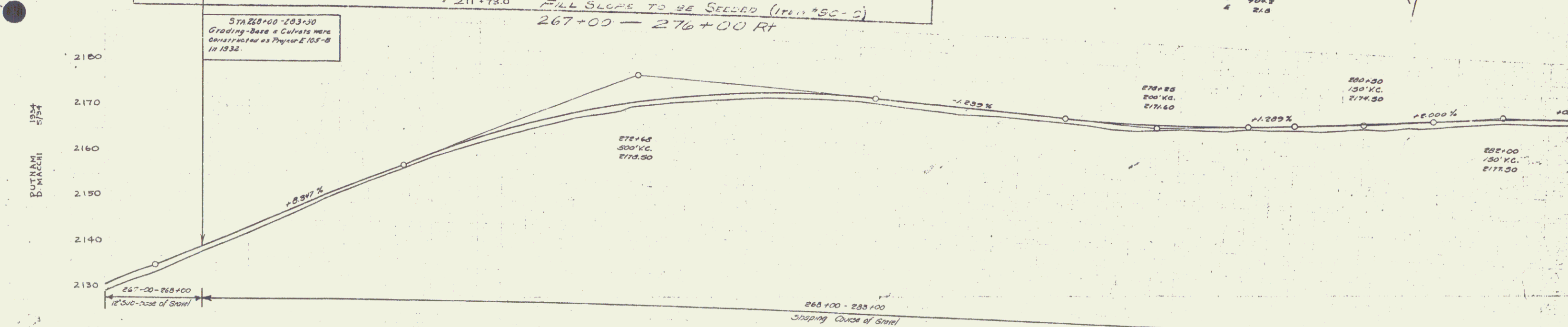
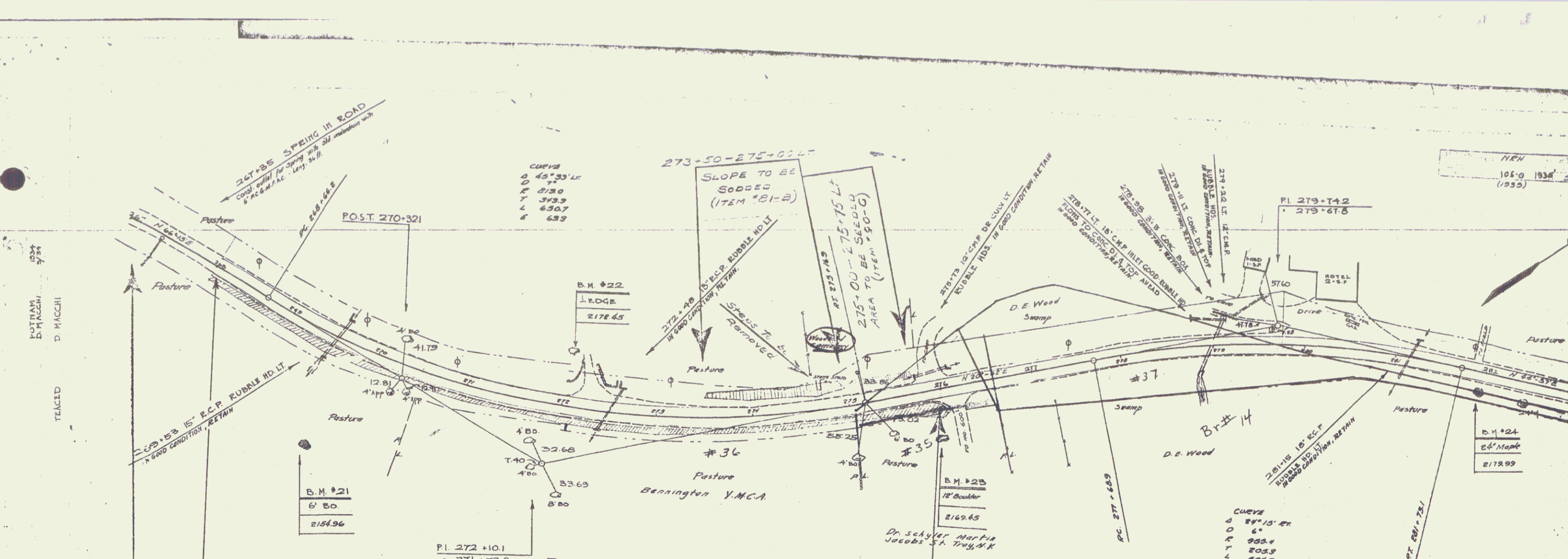
REV. CURVE
RADIUS 54.15'
CHORD 20.55
ARC 10.42
PI-B

B.M. #23
BOULDER
EL. 2168.45

X-ref Sta 152± F-FLH010-10
Sta 278± NR# 1054 3

H9

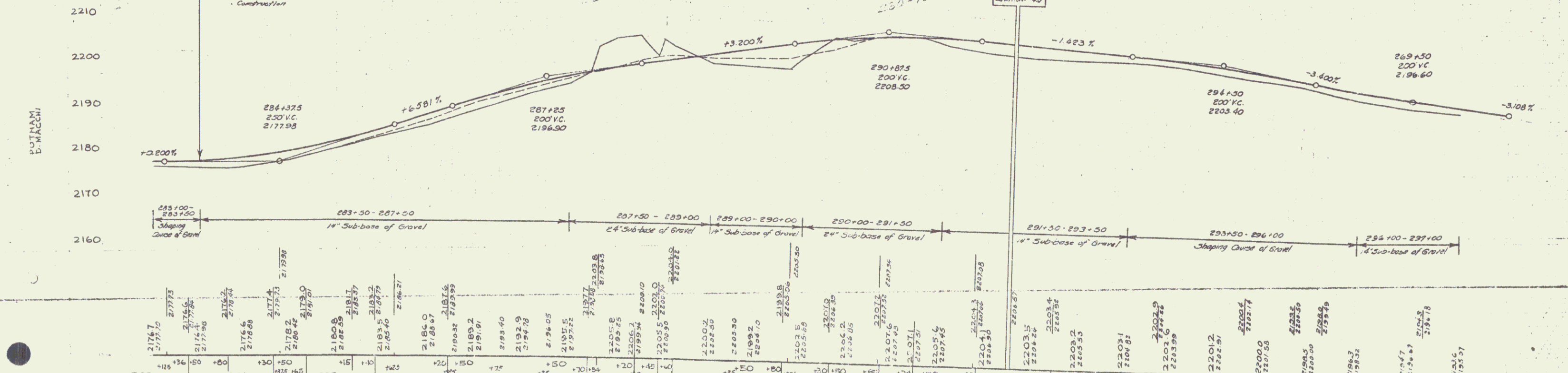
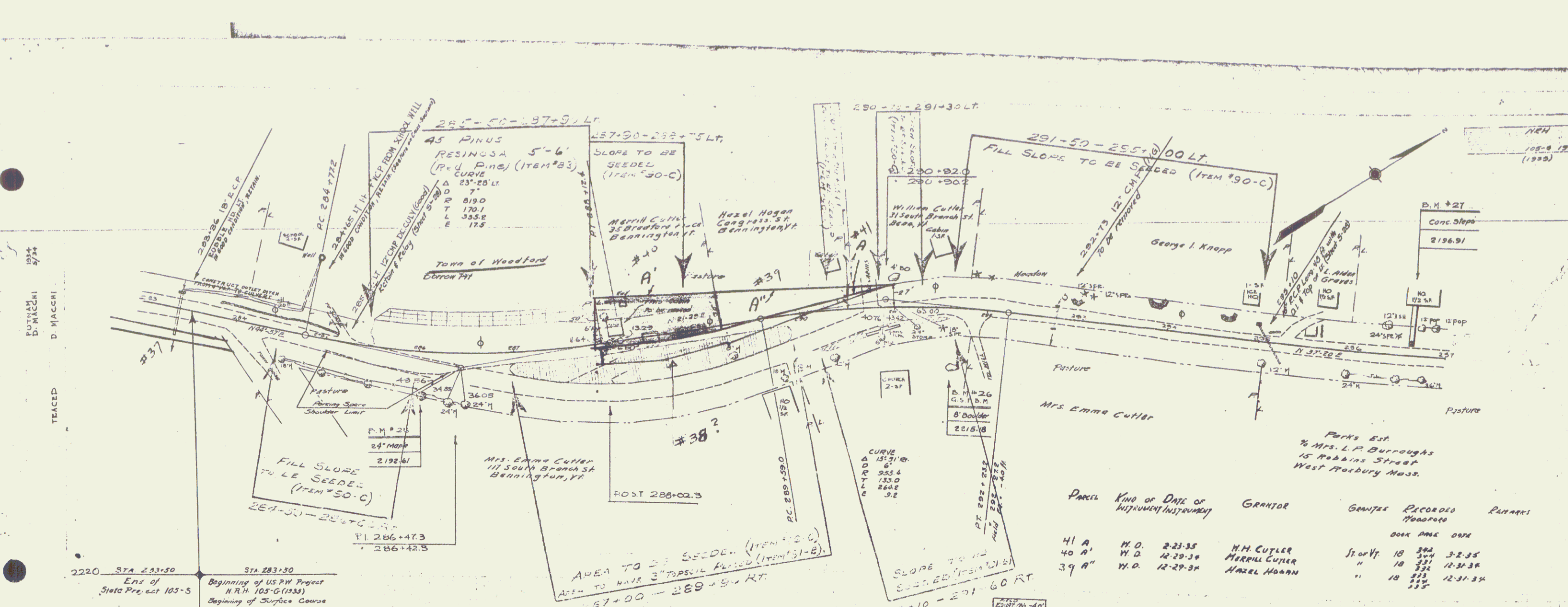
SHEET 4A



Station	Elevation	Notes
267+00	2130.96	
267+10	2133.27	
267+20	2135.25	
267+30	2139.14	
267+40	2142.4	
267+50	2146.7	
267+60	2151.1	
267+70	2155.2	
267+80	2159.2	
267+90	2162.7	
268+00	2165.9	
268+10	2168.3	
268+20	2170.6	
268+30	2172.4	
268+40	2173.5	
268+50	2173.6	
268+60	2174.5	
268+70	2173.5	
268+80	2172.0	
268+90	2171.5	
269+00	2172.0	
269+10	2172.08	
269+20	2171.5	
269+30	2171.0	
269+40	2171.0	
269+50	2172.2	
269+60	2171.7	
269+70	2172.27	
269+80	2171.8	
269+90	2172.4	
270+00	2172.0	
270+10	2172.0	
270+20	2172.0	
270+30	2172.0	
270+40	2172.0	
270+50	2172.0	
270+60	2172.0	
270+70	2172.0	
270+80	2172.0	
270+90	2172.0	
271+00	2172.0	
271+10	2172.0	
271+20	2172.0	
271+30	2172.0	
271+40	2172.0	
271+50	2172.0	
271+60	2172.0	
271+70	2172.0	
271+80	2172.0	
271+90	2172.0	
272+00	2172.0	
272+10	2172.0	
272+20	2172.0	
272+30	2172.0	
272+40	2172.0	
272+50	2172.0	
272+60	2172.0	
272+70	2172.0	
272+80	2172.0	
272+90	2172.0	
273+00	2172.0	
273+10	2172.0	
273+20	2172.0	
273+30	2172.0	
273+40	2172.0	
273+50	2172.0	
273+60	2172.0	
273+70	2172.0	
273+80	2172.0	
273+90	2172.0	
274+00	2172.0	
274+10	2172.0	
274+20	2172.0	
274+30	2172.0	
274+40	2172.0	
274+50	2172.0	
274+60	2172.0	
274+70	2172.0	
274+80	2172.0	
274+90	2172.0	
275+00	2172.0	
275+10	2172.0	
275+20	2172.0	
275+30	2172.0	
275+40	2172.0	
275+50	2172.0	
275+60	2172.0	
275+70	2172.0	
275+80	2172.0	
275+90	2172.0	
276+00	2172.0	
276+10	2172.0	
276+20	2172.0	
276+30	2172.0	
276+40	2172.0	
276+50	2172.0	
276+60	2172.0	
276+70	2172.0	
276+80	2172.0	
276+90	2172.0	
277+00	2172.0	
277+10	2172.0	
277+20	2172.0	
277+30	2172.0	
277+40	2172.0	
277+50	2172.0	
277+60	2172.0	
277+70	2172.0	
277+80	2172.0	
277+90	2172.0	
278+00	2172.0	
278+10	2172.0	
278+20	2172.0	
278+30	2172.0	
278+40	2172.0	
278+50	2172.0	
278+60	2172.0	
278+70	2172.0	
278+80	2172.0	
278+90	2172.0	
279+00	2172.0	
279+10	2172.0	
279+20	2172.0	
279+30	2172.0	
279+40	2172.0	
279+50	2172.0	
279+60	2172.0	
279+70	2172.0	
279+80	2172.0	
279+90	2172.0	
280+00	2172.0	
280+10	2172.0	
280+20	2172.0	
280+30	2172.0	
280+40	2172.0	
280+50	2172.0	
280+60	2172.0	
280+70	2172.0	
280+80	2172.0	
280+90	2172.0	
281+00	2172.0	

B.M. # 21 PRINT SPOT ON 6' BOULDER, 100' RT OF STA 269+72, ELEV 2154.96
 B.M. # 22 PRINT SPOT ON LEDGE, 60' LT OF STA 272+00, ELEV 2178.45
 B.M. # 23 PRINT SPOT ON 12' BOULDER, 50' RT OF STA 275+09, ELEV 2169.45
 B.M. # 24 SPRINK IN ROOT OF 24" MAPLE, 19' RT OF STA 281+94, ELEV 2179.99

SERIES 103-0
 SHEET NO. 19 OF 19

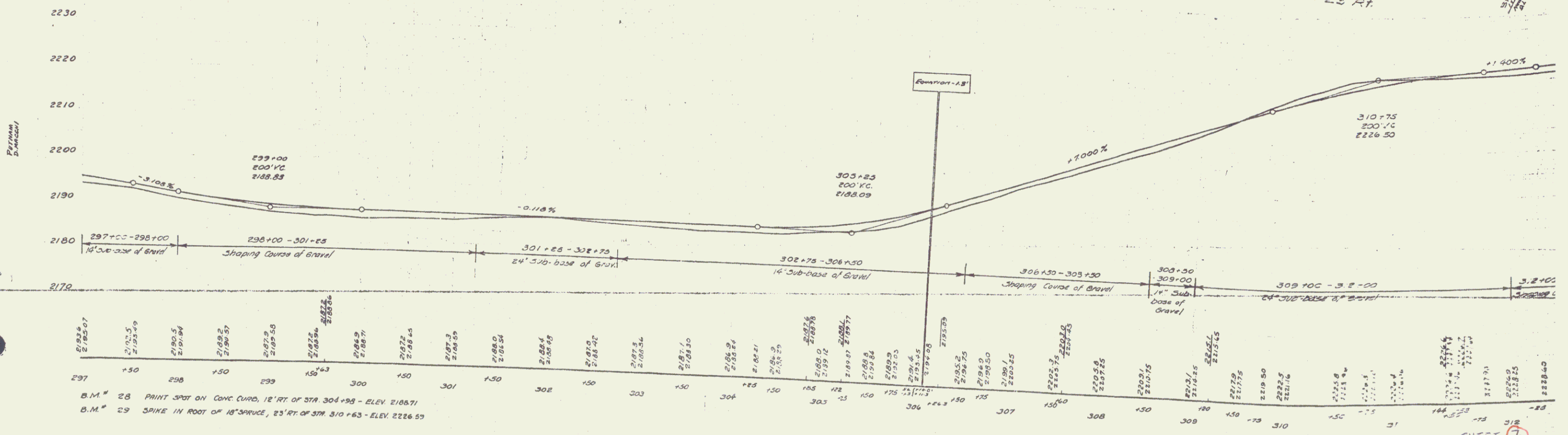
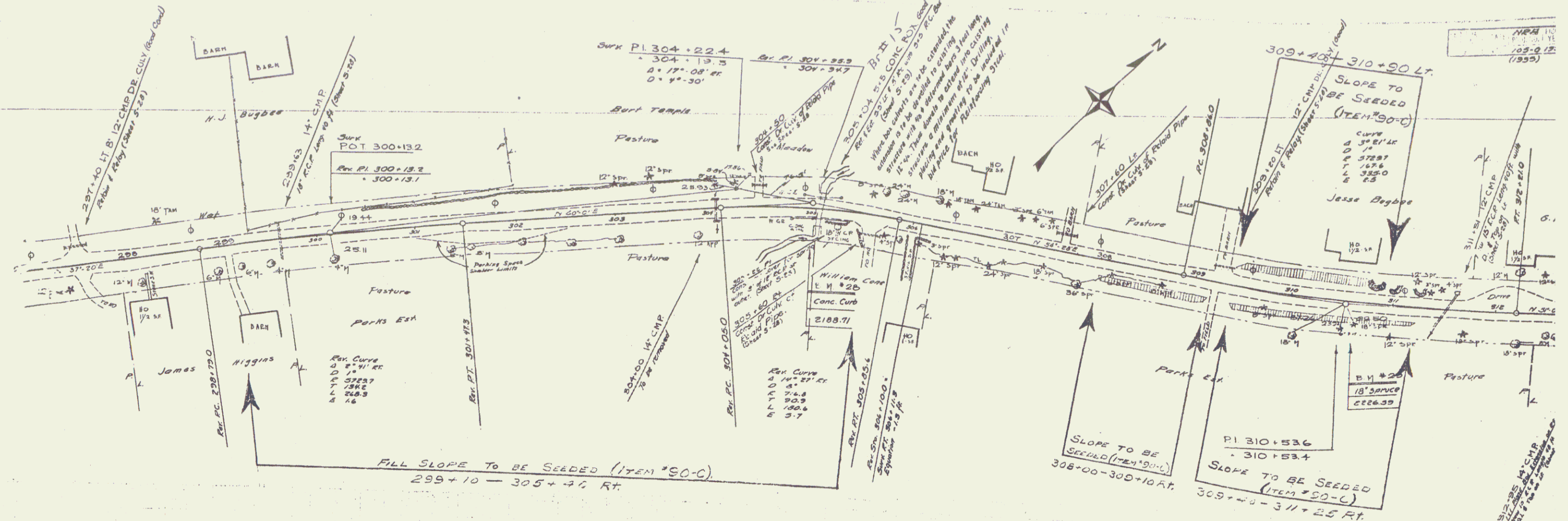


Station	Elevation
283+00	2176.7
283+10	2177.3
283+20	2177.6
283+30	2177.8
283+40	2177.9
283+50	2178.0
284+00	2176.6
284+10	2176.8
284+20	2177.0
284+30	2177.2
284+40	2177.4
284+50	2177.6
285+00	2180.6
285+10	2180.8
285+20	2181.0
285+30	2181.2
285+40	2181.4
285+50	2181.6
286+00	2183.5
286+10	2183.7
286+20	2183.9
286+30	2184.1
286+40	2184.3
286+50	2184.5
287+00	2194.0
287+10	2194.2
287+20	2194.4
287+30	2194.6
287+40	2194.8
287+50	2195.0
288+00	2197.7
288+10	2197.9
288+20	2198.1
288+30	2198.3
288+40	2198.5
288+50	2198.7
289+00	2205.8
289+10	2206.0
289+20	2206.2
289+30	2206.4
289+40	2206.6
289+50	2206.8
290+00	2209.5
290+10	2209.7
290+20	2209.9
290+30	2210.1
290+40	2210.3
290+50	2210.5
291+00	2218.2
291+10	2218.4
291+20	2218.6
291+30	2218.8
291+40	2219.0
291+50	2219.2
292+00	2228.3
292+10	2228.5
292+20	2228.7
292+30	2228.9
292+40	2229.1
292+50	2229.3
293+00	2203.5
293+10	2203.7
293+20	2203.9
293+30	2204.1
293+40	2204.3
293+50	2204.5
294+00	2203.1
294+10	2203.3
294+20	2203.5
294+30	2203.7
294+40	2203.9
294+50	2204.1
295+00	2200.0
295+10	2200.2
295+20	2200.4
295+30	2200.6
295+40	2200.8
295+50	2201.0
296+00	2198.3
296+10	2198.5
296+20	2198.7
296+30	2198.9
296+40	2199.1
296+50	2199.3
297+00	2195.7

B.M. #25 SPK IN ROOT OF 24' MAPLE, 45' RT OF STA 286+00 - ELEV 2192.61
 B.M. #26 U.S.G.P.M. ON 8' BOULDER, 80' RT OF STA 291+60, ELEV 2215.18
 B.M. #27 PRINT SPOT ON CONC STEPS, 14' LT OF STA 296+65, ELEV 2196.91

PARCEL	KIND OF	DATE OF	GRANTOR	GRANTEE	RECORDED	REMARKS
41 A	W.D.	2-23-35	M.H. CUTLER	St of Vt	10	394 3-2-35
40 A	W.D.	12-29-38	MERRILL CUTLER	"	10	331 12-31-38
39 A	W.D.	12-29-38	HAZEL HOGAN	"	10	332 12-31-38

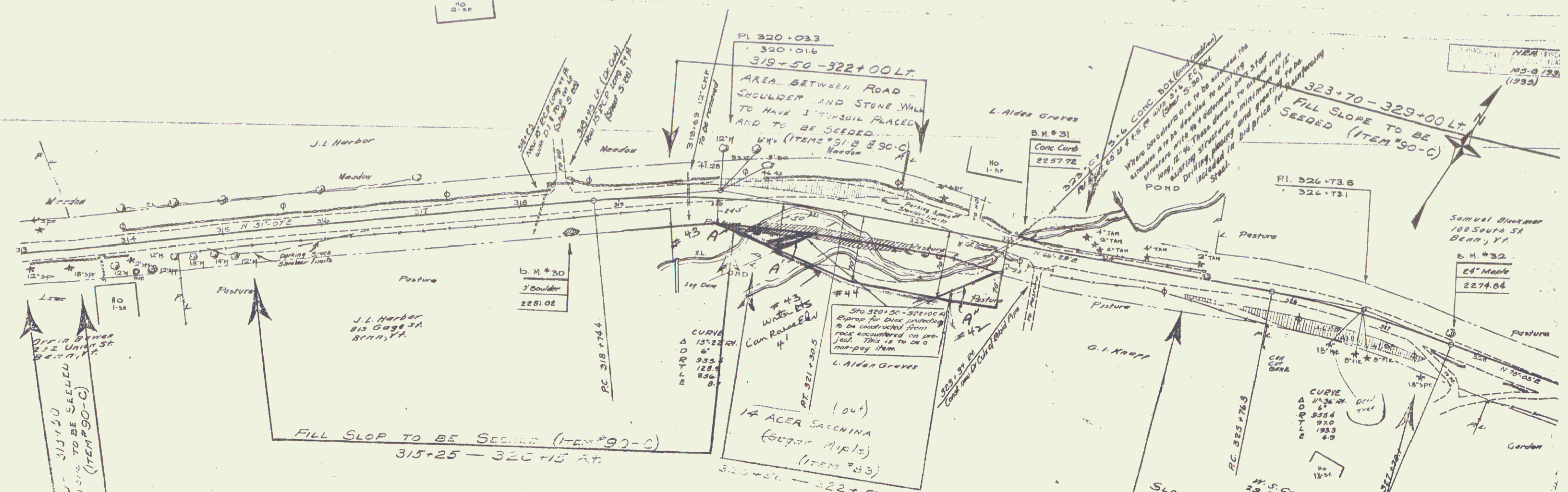
POTINAK
D. MACCHI
5/17/74
D. MACCHI



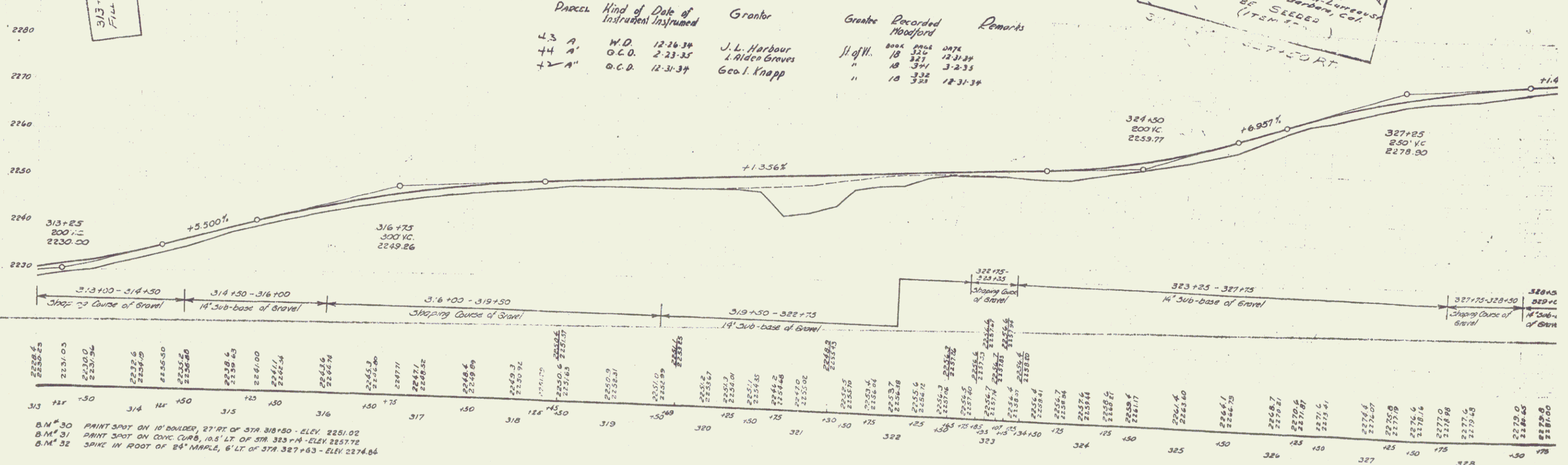
B.M. # 28 PRINT SPOT ON CONC CURB, 12' RT. OF STA 304+98 - ELEV 2188.71
 B.M. # 29 SNAKE IN ROOT OF 18" BRIDGE, 25' RT. OF STA 310+63 - ELEV 2226.59

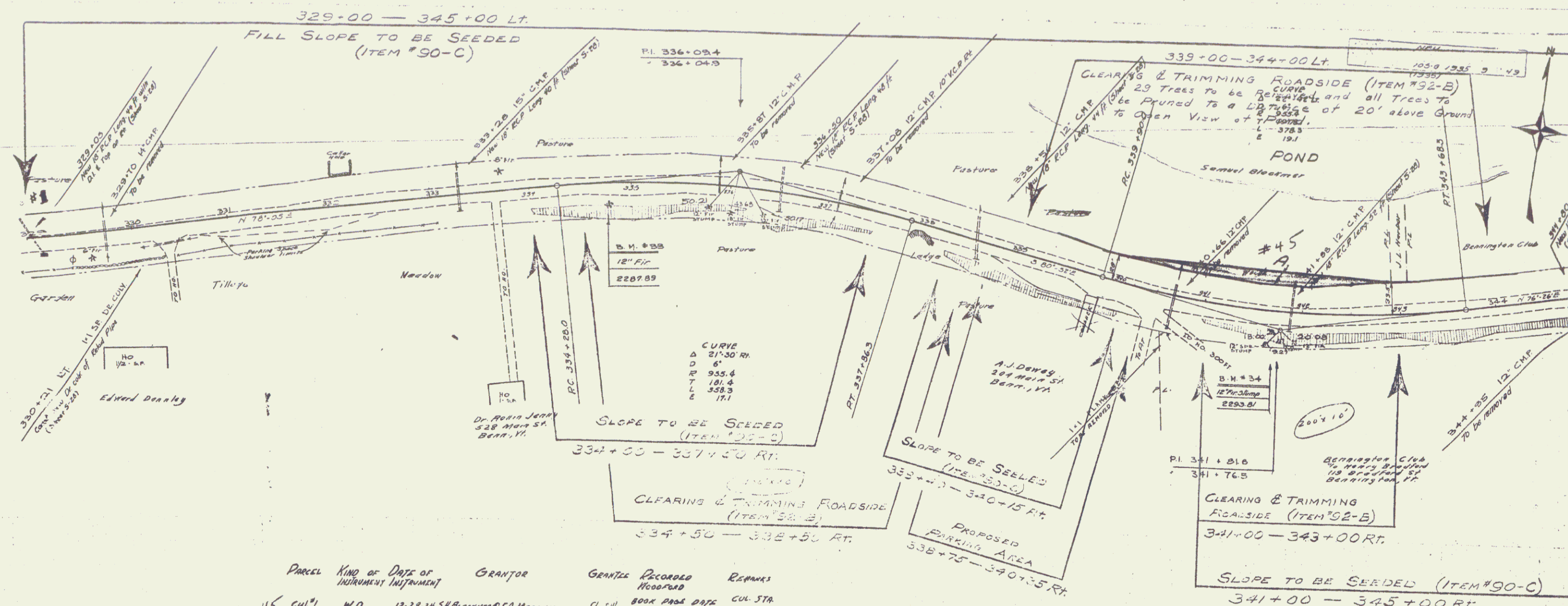
POTNAM
D. MACCHI
5/9/74

POTNAM
D. MACCHI

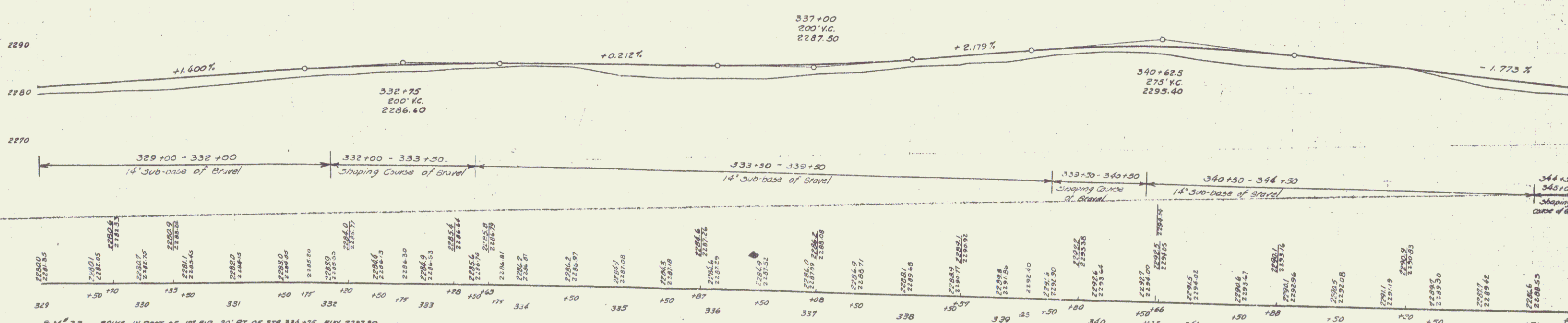


Parcel	Kind of Instrument	Date of Instrument	Grantor	Grantee	Recorded	Remarks
43 A	W.D.	12-26-34	J. L. Harbour	J. of W.	BOOK 4844 PAGE 18	
44 A	O.C.D.	2-23-35	J. L. Harbour	"	18 321 12-14-34	
45 A	O.C.D.	12-31-34	Geo. I. Knapp	"	18 341 3-2-35	
				"	18 332 12-31-34	



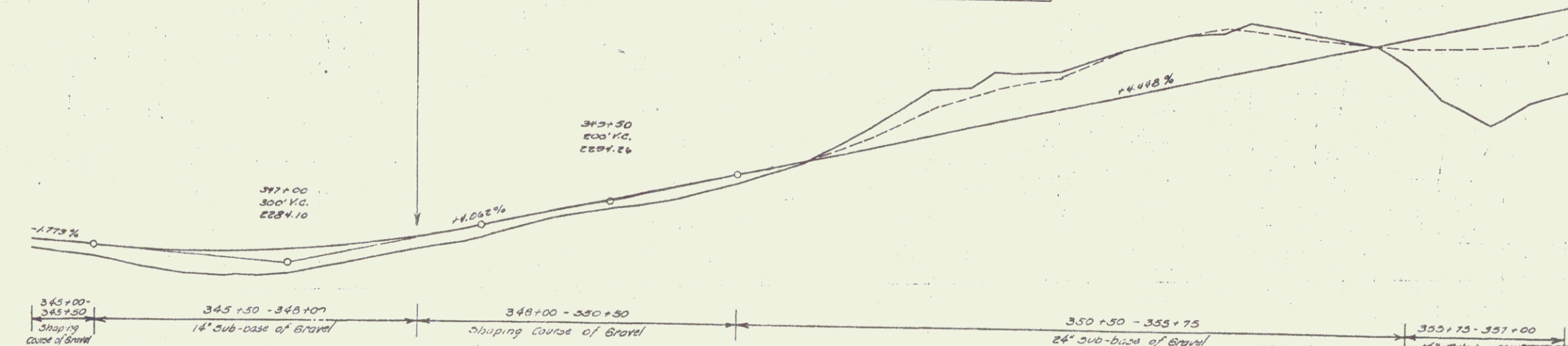
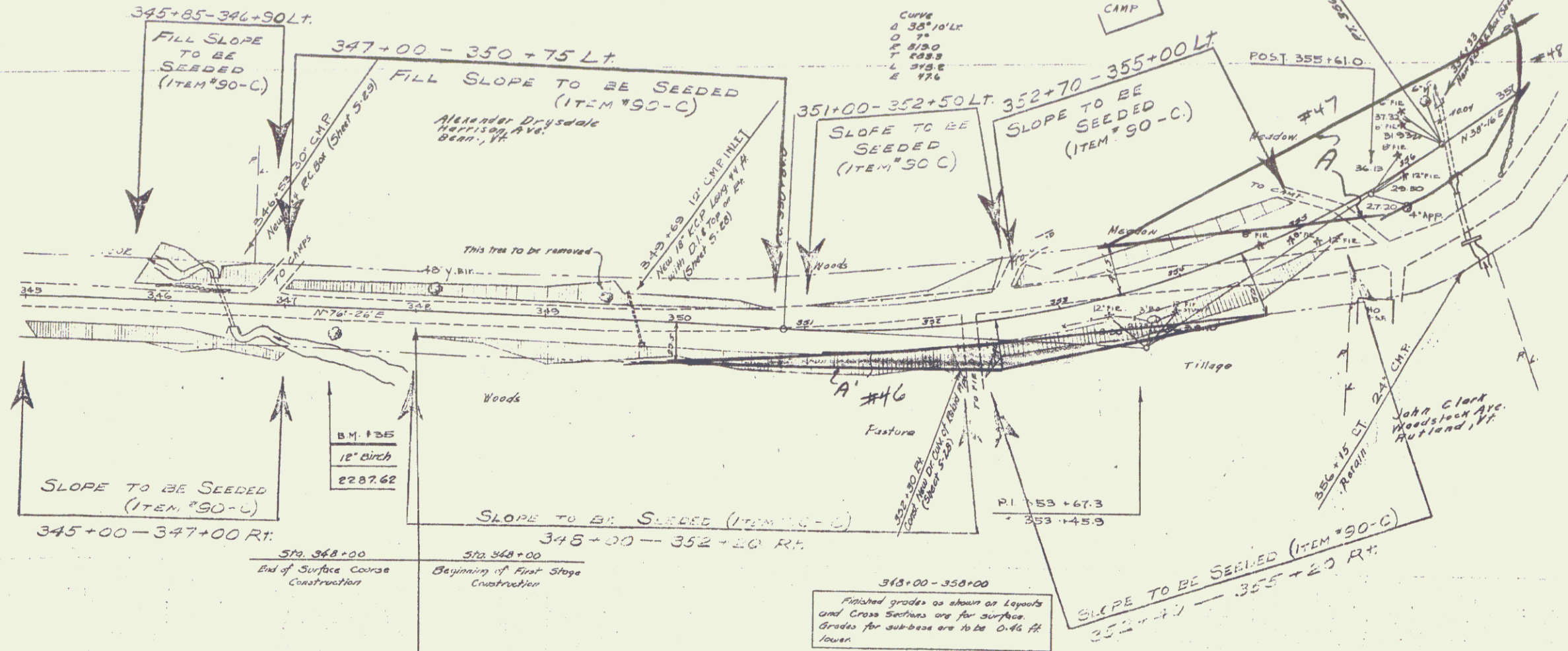


Parcel	Kind of	Date of	Grantor	Grantee	Recorded	Remarks
45	CUA	N.D.	12-27-34 S.H. BLANCHARD & F.A. MERRICK	St. J. H.	800X PAGE DATE 12-31-34	CUL STA 329+05

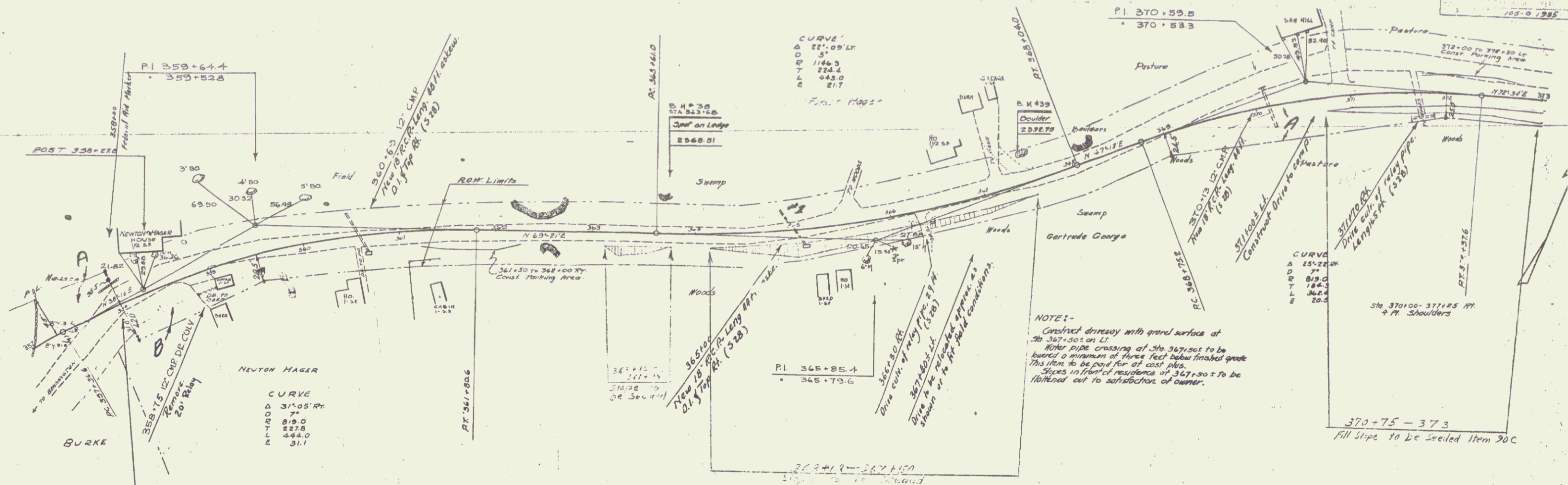


B.M. 33 SPIKE IN ROOT OF 12" FIR, 20' RT. OF STA 334+75, ELEV 2287.89
 B.M. 34 SPIKE IN ROOT OF 12" FIR STUMP, 20' RT. OF STA 341+71, ELEV 2295.81

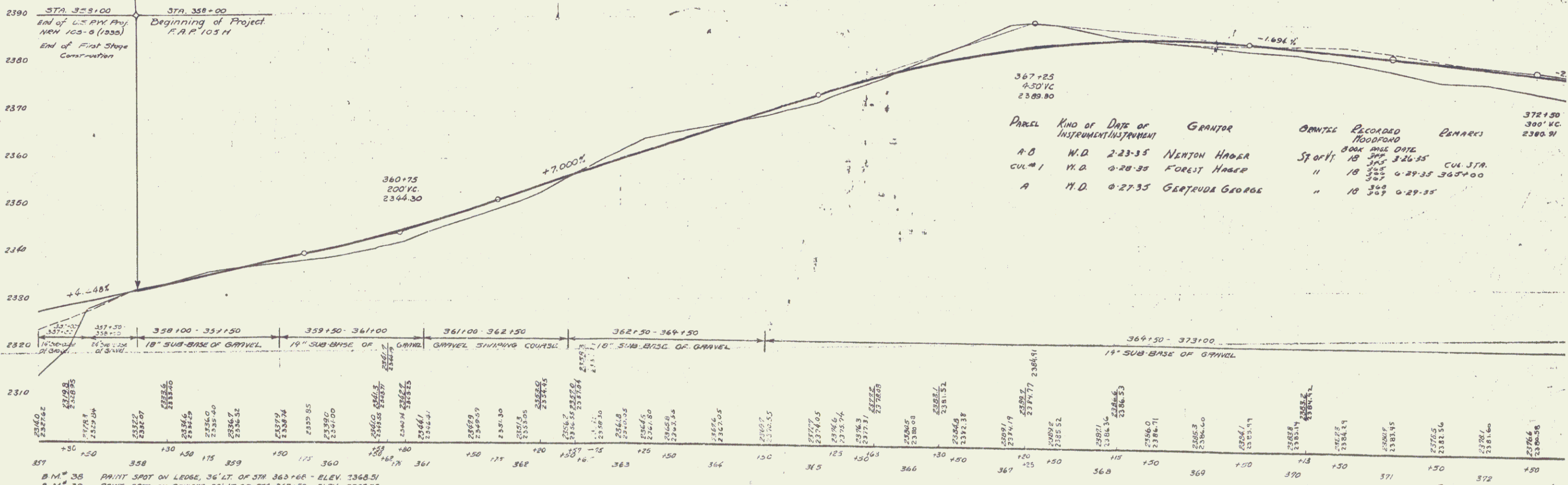
Parcel	Kind of Data of Instrument	Grantor	Grantee	Recorded	Remarks
47 A	W.D.	12-27-38 A.B. DAYBELL	WOODFORD	BOOK PAGE DATE	
46 A	Q.C.D.	1-2-35 HARR. ANOTHER INN. CLWO	WOODFORD	BOOK PAGE DATE	



Station	Sub-base of Gravel	Surface
345+00	2284.10	2287.62
345+10	2284.10	2287.62
345+20	2284.10	2287.62
345+30	2284.10	2287.62
345+40	2284.10	2287.62
345+50	2284.10	2287.62
345+60	2284.10	2287.62
345+70	2284.10	2287.62
345+80	2284.10	2287.62
345+90	2284.10	2287.62
346+00	2284.10	2287.62
346+10	2284.10	2287.62
346+20	2284.10	2287.62
346+30	2284.10	2287.62
346+40	2284.10	2287.62
346+50	2284.10	2287.62
346+60	2284.10	2287.62
346+70	2284.10	2287.62
346+80	2284.10	2287.62
346+90	2284.10	2287.62
347+00	2284.10	2287.62
347+10	2284.10	2287.62
347+20	2284.10	2287.62
347+30	2284.10	2287.62
347+40	2284.10	2287.62
347+50	2284.10	2287.62
347+60	2284.10	2287.62
347+70	2284.10	2287.62
347+80	2284.10	2287.62
347+90	2284.10	2287.62
348+00	2284.10	2287.62
348+10	2284.10	2287.62
348+20	2284.10	2287.62
348+30	2284.10	2287.62
348+40	2284.10	2287.62
348+50	2284.10	2287.62
348+60	2284.10	2287.62
348+70	2284.10	2287.62
348+80	2284.10	2287.62
348+90	2284.10	2287.62
349+00	2284.10	2287.62
349+10	2284.10	2287.62
349+20	2284.10	2287.62
349+30	2284.10	2287.62
349+40	2284.10	2287.62
349+50	2284.10	2287.62
349+60	2284.10	2287.62
349+70	2284.10	2287.62
349+80	2284.10	2287.62
349+90	2284.10	2287.62
350+00	2284.10	2287.62
350+10	2284.10	2287.62
350+20	2284.10	2287.62
350+30	2284.10	2287.62
350+40	2284.10	2287.62
350+50	2284.10	2287.62
350+60	2284.10	2287.62
350+70	2284.10	2287.62
350+80	2284.10	2287.62
350+90	2284.10	2287.62
351+00	2284.10	2287.62
351+10	2284.10	2287.62
351+20	2284.10	2287.62
351+30	2284.10	2287.62
351+40	2284.10	2287.62
351+50	2284.10	2287.62
351+60	2284.10	2287.62
351+70	2284.10	2287.62
351+80	2284.10	2287.62
351+90	2284.10	2287.62
352+00	2284.10	2287.62
352+10	2284.10	2287.62
352+20	2284.10	2287.62
352+30	2284.10	2287.62
352+40	2284.10	2287.62
352+50	2284.10	2287.62
352+60	2284.10	2287.62
352+70	2284.10	2287.62
352+80	2284.10	2287.62
352+90	2284.10	2287.62
353+00	2284.10	2287.62
353+10	2284.10	2287.62
353+20	2284.10	2287.62
353+30	2284.10	2287.62
353+40	2284.10	2287.62
353+50	2284.10	2287.62
353+60	2284.10	2287.62
353+70	2284.10	2287.62
353+80	2284.10	2287.62
353+90	2284.10	2287.62
354+00	2284.10	2287.62
354+10	2284.10	2287.62
354+20	2284.10	2287.62
354+30	2284.10	2287.62
354+40	2284.10	2287.62
354+50	2284.10	2287.62
354+60	2284.10	2287.62
354+70	2284.10	2287.62
354+80	2284.10	2287.62
354+90	2284.10	2287.62
355+00	2284.10	2287.62
355+10	2284.10	2287.62
355+20	2284.10	2287.62
355+30	2284.10	2287.62
355+40	2284.10	2287.62
355+50	2284.10	2287.62
355+60	2284.10	2287.62
355+70	2284.10	2287.62
355+80	2284.10	2287.62
355+90	2284.10	2287.62
356+00	2284.10	2287.62
356+10	2284.10	2287.62
356+20	2284.10	2287.62
356+30	2284.10	2287.62
356+40	2284.10	2287.62
356+50	2284.10	2287.62
356+60	2284.10	2287.62
356+70	2284.10	2287.62
356+80	2284.10	2287.62
356+90	2284.10	2287.62
357+00	2284.10	2287.62



NOTE:-
 Construct driveway with gravel surface at Sta. 367+30 on LI.
 Water pipe crossing at Sta. 367+30 to be buried a minimum of three feet below finished grade. This item to be paid for at cost plus.
 Slopes in front of residence of 367+30 to be retained cut to satisfaction of owner.



PARCEL	KIND OF INSTRUMENT	DATE OF INSTRUMENT	GRANTOR	ORIG. RECORDED	RECORDED BOOK	RECORDED DATE	REMARKS
A-B	N.D.	2-23-35	NEWTON HAGER	Sq. 01/1	8004	3-26-35	CUL STA.
CUL #1	N.D.	4-28-35	FOREST HAGER	"	305	4-29-35	363+100
A	N.D.	4-27-35	GERTRUDE GEORGE	"	309	4-29-35	

STATION	ELEVATION	STATION	ELEVATION	STATION	ELEVATION	STATION	ELEVATION	STATION	ELEVATION
357	2337.62	358	2338.07	359	2338.40	360	2338.74	361	2339.05
362	2339.30	363	2339.65	364	2340.00	365	2340.35	366	2340.70
367	2341.05	368	2341.40	369	2341.75	370	2342.10	371	2342.45
372	2342.80	373	2343.15						

B.M. 35 PRINT SPOT ON LEDGE, 36' LT. OF STA. 363+68 - ELEV. 2368.51
 B.M. 36 PRINT SPOT ON BOULDER, 26' LT. OF STA. 367+50 - ELEV. 2392.75

INDEX OF SHEETS

SHEET NO.	TITLE PAGE
1	TYPICAL CROSS-SECTION OF IMPROVEMENT & SUMMARY OF QUANTITIES
2-4	LAYOUT SHEETS

FED. AID DIST. NO.	STATE	FED. AID PROJ. NO.	FISCAL YEAR	SHEET NO.	TOTAL SHEETS
0	VT.	105-G	1986	1	4

(LANDSCAPING)

STATE OF VERMONT
STATE HIGHWAY DEPARTMENT

PLAN AND PROFILE OF PROPOSED
STATE HIGHWAY
FEDERAL AID PROJECT

ROADSIDE IMPROVEMENT

PLANTING PLANS

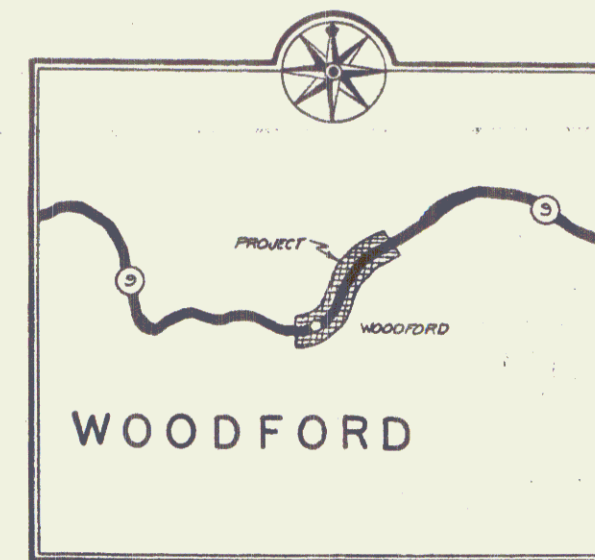
TOWN OF WOODFORD
BENNINGTON-BRATTLEBORO ROAD
ROUTE 9

FROM STA. 283 + 50 OF N.R.H. PROJECT 105-G, EASTERLY
TO STA. 358 + 00 OF N.R.H. PROJECT 105-G.

LENGTH OF PROJECT 7,444.7 FT. = 1.409 MILES

SCALES

TYPICAL SECTIONS: AS INDICATED.
LAYOUTS 1" = 50'



SCALE: 1 INCH = 1 MILE

PROPOSED PLANTING

TREES

PINUS RESINOSA 5'-6'
(Red Pine)



CUT



FILL

EXISTING GROWTH



PROJECT	Woodford
STATE	Vt.
FED. AID PROJ. NO.	105-G
TYPE	Landscaping
LENGTH	1.409 MI.
YEAR IN USE	
LOCATION	Bennington-Brattleboro Road, Route 9, From Sta. 283+50 of N.R.H. Project 105-G, easterly to Sta. 358+00 of N.R.H. Project 105-G.

CONVENTIONAL SIGNS

GROUND ELEVATION	BATHY	LINE
GRADE ELEVATION	BATHY	LINE
CURVE DATA		
DEFLECTION ANGLE	Δ	
DEGREE OF CURVE	D	
RADIUS OF CURVE	R	
TANGENT DISTANCE	T	
LENGTH OF CURVE	L	
EXTERNAL DISTANCE	E	
POINT OF INTERSECTION	P. I.	
POINT OF CURVE	P. C.	
POINT OF TANGENT	P. T.	
POINT ON TANGENT	P. O. T.	

NOTE

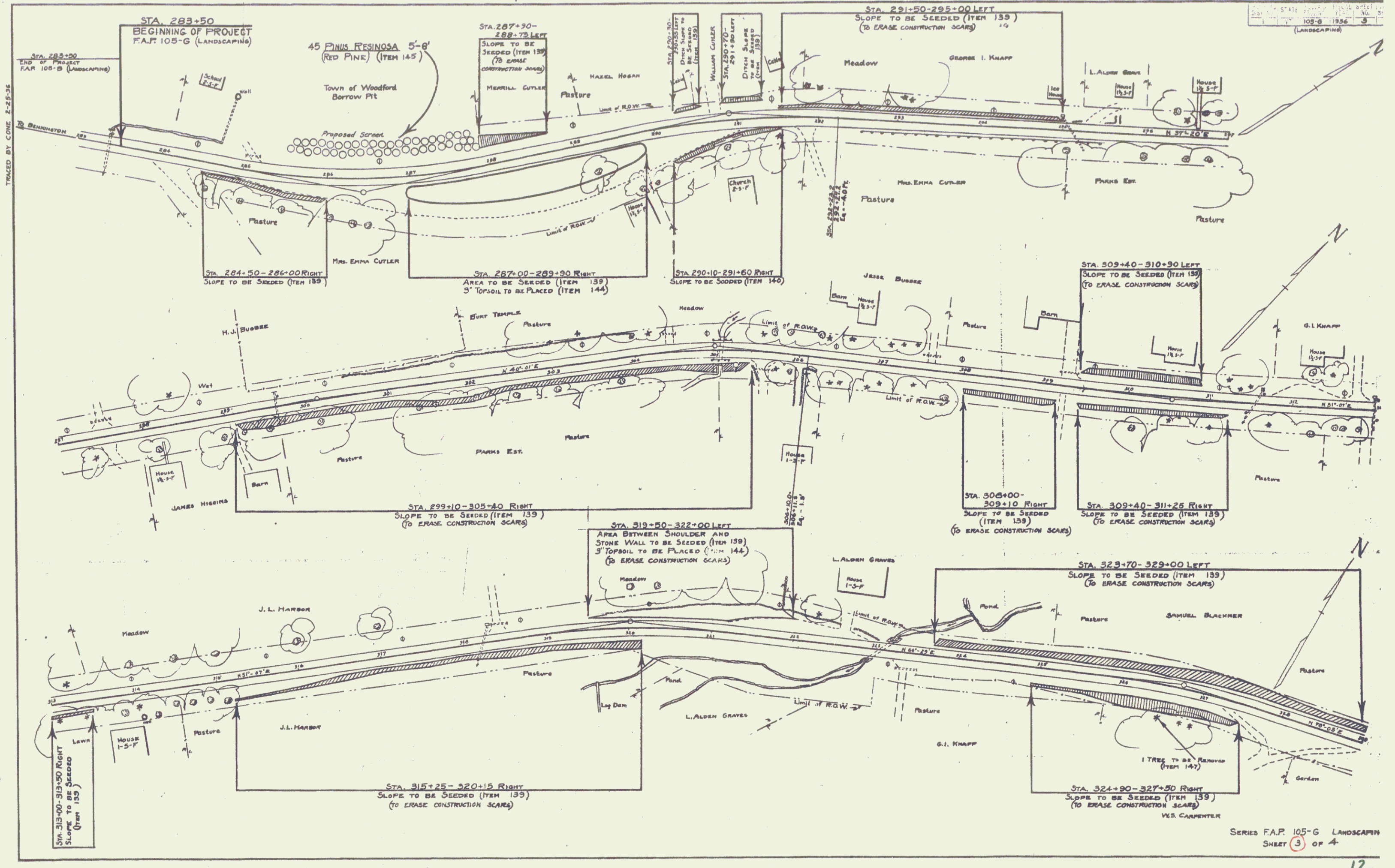
These plans are subject to such revisions as may be required by the Bureau of Public Roads or the Commissioner of Highways. Construction is to be carried on in accordance with the plans and Standard Road and Bridge Specifications of 1930, including all subsequent approved revisions and such revised specifications and special provisions as are submitted with the plans.

APPROVED: April 6, 1986
H. Daugherty
COMMISSIONER OF HIGHWAYS

SUBMITTED BY ORDER OF THE STATE HIGHWAY DEPARTMENT

RECOMMENDED: [Signature]
DISTRICT ENGINEER, BUREAU OF PUBLIC ROADS
RECOMMENDED FOR APPROVAL: [Signature]
CHIEF ENGINEER, BUREAU OF PUBLIC ROADS
APPROVED: [Signature]
DIRECTOR, BUREAU OF PUBLIC ROADS

SERIES FAP NO. 105-G FILED
SHEET (1) OF 4



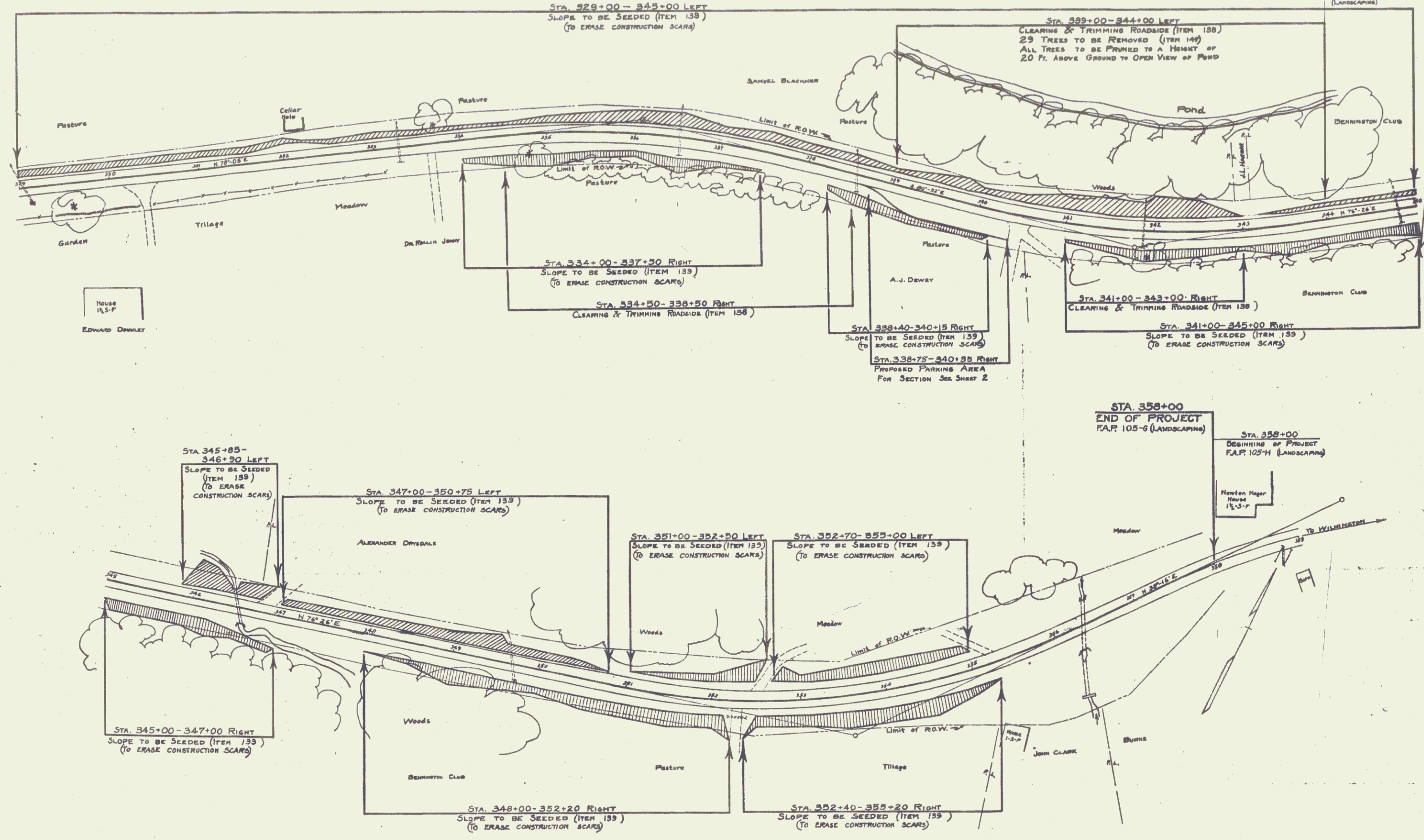
TRACED BY CONE E-25-36

STATE OF ILLINOIS
 DEPARTMENT OF TRANSPORTATION
 DIVISION OF HIGHWAYS
 105-G 1956
 (LANDSCAPING)

SERIES F.A.P. 105-G LANDSCAPING
 SHEET 3 OF 4

TRACED BY CONE 2-27-36

105-G 1936 4



STA. 329+00 - 345+00 LEFT
SLOPE TO BE SEEDED (ITEM 139)
(TO ERASE CONSTRUCTION SCARS)

STA. 339+00 - 344+00 LEFT
CLEARING & TRIMMING ROADSIDE (ITEM 138)
29 TREES TO BE REMOVED (ITEM 149)
ALL TREES TO BE PRUNED TO A HEIGHT OF
20 FT. ABOVE GROUND TO OPEN VIEW OF POND

STA. 334+00 - 337+50 RIGHT
SLOPE TO BE SEEDED (ITEM 139)
(TO ERASE CONSTRUCTION SCARS)

STA. 334+50 - 338+50 RIGHT
CLEARING & TRIMMING ROADSIDE (ITEM 138)

STA. 338+40 - 340+15 RIGHT
SLOPE TO BE SEEDED (ITEM 139)
ERASE CONSTRUCTION SCARS

STA. 338+75 - 340+35 RIGHT
PROPOSED PARKING AREA
FOR SECTION SEE SHEET 2

Sta. 341+00 - 343+00 RIGHT
CLEARING & TRIMMING ROADSIDE (ITEM 138)

STA. 341+00 - 345+00 RIGHT
SLOPE TO BE SEEDED (ITEM 139)
(TO ERASE CONSTRUCTION SCARS)

STA. 358+00
END OF PROJECT
F.A.P. 105-G (LANDSCAPING)

STA. 358+00
BEGINNING OF PROJECT
F.A.P. 105-H (LANDSCAPING)

STA. 345+85 -
346+90 LEFT
SLOPE TO BE SEEDED
(ITEM 139)
(TO ERASE
CONSTRUCTION SCARS)

STA. 347+00 - 350+75 LEFT
SLOPE TO BE SEEDED (ITEM 139)
(TO ERASE CONSTRUCTION SCARS)

STA. 351+00 - 352+90 LEFT
SLOPE TO BE SEEDED (ITEM 139)
(TO ERASE CONSTRUCTION SCARS)

STA. 352+70 - 355+00 LEFT
SLOPE TO BE SEEDED (ITEM 139)
(TO ERASE CONSTRUCTION SCARS)

STA. 345+00 - 347+00 RIGHT
SLOPE TO BE SEEDED (ITEM 139)
(TO ERASE CONSTRUCTION SCARS)

STA. 348+00 - 352+20 RIGHT
SLOPE TO BE SEEDED (ITEM 139)
(TO ERASE CONSTRUCTION SCARS)

STA. 352+40 - 355+20 RIGHT
SLOPE TO BE SEEDED (ITEM 139)
(TO ERASE CONSTRUCTION SCARS)

SERIES F.A.P. 105-G LANDSCAP SHEET 4 OF 4