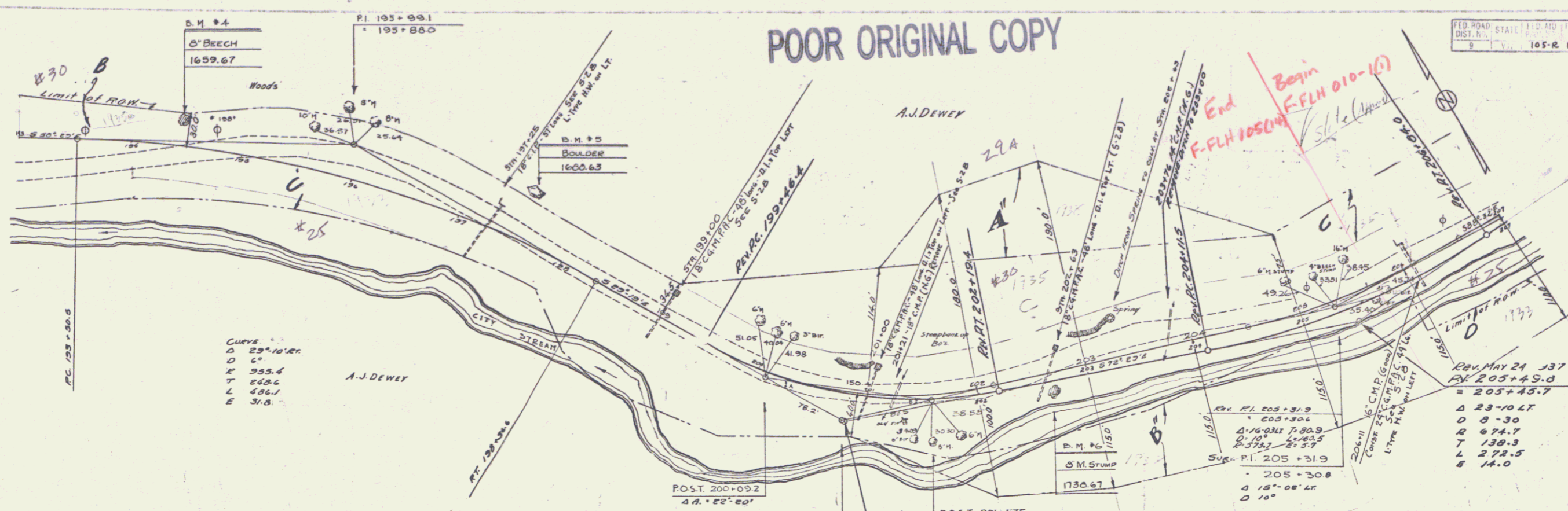


POOR ORIGINAL COPY

FED. ROAD STATE I. D. AND T. S. DIST. N. 9 V. 105-R 1934 5 60



CURVE
 Δ 23°10'12"
 C 100.0
 T 395.4
 L 468.6
 E 486.1
 E 31.8

REV. MAY 21 1937
 PI. 205+53.0
 Δ 23°10'12"
 C 100.0
 T 395.4
 L 468.6
 E 486.1
 E 31.8

INACCESSIBLE
 PI. 200+87.4
 Δ 43°11'12"
 C 100.0
 T 143.6
 L 273.0
 E 26.0

POST. 201+575
 Δ B. 201°50'
 REV. MAY 24, 1937
 PI. 200+90.0
 Δ 41°05'12"
 C 100.0
 T 393.1
 L 273.6
 E 26.0

PARCEL	KIND OF INSTRUMENT	DATE OF INSTRUMENT	GRANTOR	GRANTEE	REMARKS
30 A-B-C	O.C.D.	3-23-35	A. J. DEWEY	STOFF	18 346 3-29-35
25 C-D	O.C.D.	10-10-33	"	"	18 254 12-1-33
29 A-A'	O.C.D.	2-10-38	ELIZABETH D. DEWEY	"	18 585 2-21-38

FOR PROFILE SEE SHEET FOLLOWING

B.M. #4 SPIKE IN ROOT OF 8' BEECH, 20 FT. LT. OF STR 194+4.5, ELEV. 1659.67
 B.M. #5 PRINT SPOT ON BOULDER, 42 FT. LT. OF STR 197+15, ELEV. 1600.63
 B.M. #6 SPIKE IN ROOT OF 8' MAPLE STUMP, 13 FT. FT. OF STR 202+16, ELEV. 1730.67

SERIES No. 105-R
 SHEET 5 OF 60

1640