

Vt. Route 9 Molly Stark Trail

BENNINGTON WOODFORD

FELH 105(14)

EXISTING STRUCTURE 3 @ 450' at Sta. 42+0

1. 1539.0 @ 1538

2. 1539.0 @ 1539

3. 1539.0 @ 1540

4. 1539.0 @ 1541

5. 1539.0 @ 1542

6. 1539.0 @ 1543

7. 1539.0 @ 1544

8. 1539.0 @ 1545

9. 1539.0 @ 1546

10. 1539.0 @ 1547

11. 1539.0 @ 1548

12. 1539.0 @ 1549

13. 1539.0 @ 1550

14. 1539.0 @ 1551

15. 1539.0 @ 1552

16. 1539.0 @ 1553

17. 1539.0 @ 1554

18. 1539.0 @ 1555

19. 1539.0 @ 1556

20. 1539.0 @ 1557

21. 1539.0 @ 1558

22. 1539.0 @ 1559

23. 1539.0 @ 1560

24. 1539.0 @ 1561

25. 1539.0 @ 1562

26. 1539.0 @ 1563

27. 1539.0 @ 1564

28. 1539.0 @ 1565

29. 1539.0 @ 1566

30. 1539.0 @ 1567

31. 1539.0 @ 1568

32. 1539.0 @ 1569

33. 1539.0 @ 1570

34. 1539.0 @ 1571

35. 1539.0 @ 1572

36. 1539.0 @ 1573

37. 1539.0 @ 1574

38. 1539.0 @ 1575

39. 1539.0 @ 1576

40. 1539.0 @ 1577

41. 1539.0 @ 1578

42. 1539.0 @ 1579

43. 1539.0 @ 1580

44. 1539.0 @ 1581

45. 1539.0 @ 1582

46. 1539.0 @ 1583

47. 1539.0 @ 1584

48. 1539.0 @ 1585

49. 1539.0 @ 1586

50. 1539.0 @ 1587

51. 1539.0 @ 1588

52. 1539.0 @ 1589

53. 1539.0 @ 1590

54. 1539.0 @ 1591

55. 1539.0 @ 1592

56. 1539.0 @ 1593

57. 1539.0 @ 1594

58. 1539.0 @ 1595

59. 1539.0 @ 1596

60. 1539.0 @ 1597

61. 1539.0 @ 1598

62. 1539.0 @ 1599

63. 1539.0 @ 1600

64. 1539.0 @ 1601

65. 1539.0 @ 1602

66. 1539.0 @ 1603

67. 1539.0 @ 1604

68. 1539.0 @ 1605

69. 1539.0 @ 1606

70. 1539.0 @ 1607

71. 1539.0 @ 1608

72. 1539.0 @ 1609

73. 1539.0 @ 1610

74. 1539.0 @ 1611

75. 1539.0 @ 1612

76. 1539.0 @ 1613

77. 1539.0 @ 1614

78. 1539.0 @ 1615

79. 1539.0 @ 1616

80. 1539.0 @ 1617

81. 1539.0 @ 1618

82. 1539.0 @ 1619

83. 1539.0 @ 1620

84. 1539.0 @ 1621

85. 1539.0 @ 1622

86. 1539.0 @ 1623

87. 1539.0 @ 1624

88. 1539.0 @ 1625

89. 1539.0 @ 1626

90. 1539.0 @ 1627

91. 1539.0 @ 1628

92. 1539.0 @ 1629

93. 1539.0 @ 1630

94. 1539.0 @ 1631

95. 1539.0 @ 1632

96. 1539.0 @ 1633

97. 1539.0 @ 1634

98. 1539.0 @ 1635

99. 1539.0 @ 1636

100. 1539.0 @ 1637

101. 1539.0 @ 1638

102. 1539.0 @ 1639

103. 1539.0 @ 1640

104. 1539.0 @ 1641

105. 1539.0 @ 1642

106. 1539.0 @ 1643

107. 1539.0 @ 1644

108. 1539.0 @ 1645

109. 1539.0 @ 1646

110. 1539.0 @ 1647

111. 1539.0 @ 1648

112. 1539.0 @ 1649

113. 1539.0 @ 1650

114. 1539.0 @ 1651

115. 1539.0 @ 1652

116. 1539.0 @ 1653

117. 1539.0 @ 1654

118. 1539.0 @ 1655

119. 1539.0 @ 1656

120. 1539.0 @ 1657

121. 1539.0 @ 1658

122. 1539.0 @ 1659

123. 1539.0 @ 1660

124. 1539.0 @ 1661

125. 1539.0 @ 1662

126. 1539.0 @ 1663

127. 1539.0 @ 1664

128. 1539.0 @ 1665

129. 1539.0 @ 1666

130. 1539.0 @ 1667

131. 1539.0 @ 1668

132. 1539.0 @ 1669

133. 1539.0 @ 1670

134. 1539.0 @ 1671

135. 1539.0 @ 1672

136. 1539.0 @ 1673

137. 1539.0 @ 1674

138. 1539.0 @ 1675

139. 1539.0 @ 1676

140. 1539.0 @ 1677

141. 1539.0 @ 1678

142. 1539.0 @ 1679

143. 1539.0 @ 1680

144. 1539.0 @ 1681

145. 1539.0 @ 1682

146. 1539.0 @ 1683

147. 1539.0 @ 1684

148. 1539.0 @ 1685

149. 1539.0 @ 1686

150. 1539.0 @ 1687

151. 1539.0 @ 1688

152. 1539.0 @ 1689

153. 1539.0 @ 1690

154. 1539.0 @ 1691

155. 1539.0 @ 1692

156. 1539.0 @ 1693

157. 1539.0 @ 1694

158. 1539.0 @ 1695

159. 1539.0 @ 1696

160. 1539.0 @ 1697

161. 1539.0 @ 1698

162. 1539.0 @ 1699

163. 1539.0 @ 1700

164. 1539.0 @ 1701

165. 1539.0 @ 1702

166. 1539.0 @ 1703

167. 1539.0 @ 1704

168. 1539.0 @ 1705

169. 1539.0 @ 1706

170. 1539.0 @ 1707

171. 1539.0 @ 1708

172. 1539.0 @ 1709

173. 1539.0 @ 1710

174. 1539.0 @ 1711

175. 1539.0 @ 1712

176. 1539.0 @ 1713

177. 1539.0 @ 1714

178. 1539.0 @ 1715

179. 1539.0 @ 1716

180. 1539.0 @ 1717

181. 1539.0 @ 1718

182. 1539.0 @ 1719

183. 1539.0 @ 1720

184. 1539.0 @ 1721

185. 1539.0 @ 1722

186. 1539.0 @ 1723

187. 1539.0 @ 1724

188. 1539.0 @ 1725

189. 1539.0 @ 1726

190. 1539.0 @ 1727

191. 1539.0 @ 1728

192. 1539.0 @ 1729

193. 1539.0 @ 1730

194. 1539.0 @ 1731

195. 1539.0 @ 1732

196. 1539.0 @ 1733

197. 1539.0 @ 1734

198. 1539.0 @ 1735

199. 1539.0 @ 1736

200. 1539.0 @ 1737

201. 1539.0 @ 1738

202. 1539.0 @ 1739

203. 1539.0 @ 1740

204. 1539.0 @ 1741

205. 1539.0 @ 1742

206. 1539.0 @ 1743

207. 1539.0 @ 1744

208. 1539.0 @ 1745

209. 1539.0 @ 1746

210. 1539.0 @ 1747

211. 1539.0 @ 1748

212. 1539.0 @ 1749

213. 1539.0 @ 1750

214. 1539.0 @ 1751

215. 1539.0 @ 1752

216. 1539.0 @ 1753

217. 1539.0 @ 1754

218. 1539.0 @ 1755

219. 1539.0 @ 1756

220. 1539.0 @ 1757

221. 1539.0 @ 1758

222. 1539.0 @ 1759

223. 1539.0 @ 1760

224. 1539.0 @ 1761

225. 1539.0 @ 1762

226. 1539.0 @ 1763

227. 1539.0 @ 1764

228. 1539.0 @ 1765

229. 1539.0 @ 1766

230. 1539.0 @ 1767

231. 1539.0 @ 1768

232. 1539.0 @ 1769

233. 1539.0 @ 1770

234. 1539.0 @ 1771

235. 1539.0 @ 1772

236. 1539.0 @ 1773

237. 1539.0 @ 1774

238. 1539.0 @ 1775

239. 1539.0 @ 1776

240. 1539.0 @ 1777

241. 1539.0 @ 1778

242. 1539.0 @ 1779

243. 1539.0 @ 1780

244. 1539.0 @ 1781

245. 1539.0 @ 1782

246. 1539.0 @ 1783

247. 1539.0 @ 1784

248. 1539.0 @ 1785

249. 1539.0 @ 1786

250. 1539.0 @ 1787

251. 1539.0 @ 1788

252. 1539.0 @ 1789

253. 1539.0 @ 1790

254. 1539.0 @ 1791

255. 1539.0 @ 1792

256. 1539.0 @ 1793

257. 1539.0 @ 1794

258. 1539.0 @ 1795

259. 1539.0 @ 1796

260. 1539.0 @ 1797

261. 1539.0 @ 1798

262. 1539.0 @ 1799

263. 1539.0 @ 1800

264. 1539.0 @ 1801

265. 1539.0 @ 1802

266. 1539.0 @ 1803

267. 1539.0 @ 1804

268. 1539.0 @ 1805

269. 1539.0 @ 1806

270. 1539.0 @ 1807

271. 1539.0 @ 1808

272. 1539.0 @ 1809

273. 1539.0 @ 1810

274. 1539.0 @ 1811

275. 1539.0 @ 1812

276. 1539.0 @ 1813

277. 1539.0 @ 1814

278. 1539.0 @ 1815

279. 1539.0 @ 1816

280. 1539.0 @ 1817

281. 1539.0 @ 1818

282. 1539.0 @ 1819

283. 1539.0 @ 1820

284. 1539.0 @ 1821

285. 1539.0 @ 1822

286. 1539.0 @ 1823

287. 1539.0 @ 1824

288. 1539.0 @ 1825

289. 1539.0 @ 1826

290. 1539.0 @ 1827

291. 1539.0 @ 1828

292. 1539.0 @ 1829

293. 1539.0 @ 1830

294. 1539.0 @ 1831

295. 1539.0 @ 1832

296. 1539.0 @ 1833

297. 1539.0 @ 1834

298. 1539.0 @ 1835

299. 1539.0 @ 1836

300. 1539.0 @ 1837

301. 1539.0 @ 1838

302. 1539.0 @ 1839

303. 1539.0 @ 1840

304. 1539.0 @ 1841

305. 1539.0 @ 1842

306. 1539.0 @ 1843

307. 1539.0 @ 1844

308. 1539.0 @ 1845

309. 1539.0 @ 1846

310. 1539.0 @ 1847

311. 1539.0 @ 1848

312. 1539.0 @ 1849

313. 1539.0 @ 1850

314. 1539.0 @ 1851

315. 1539.0 @ 1852

316. 1539.0 @ 1853

317. 1539.0 @ 1854

318. 1539.0 @ 1855

319. 1539.0 @ 1856

320. 1539.0 @ 1857

321. 1539.0 @ 1858

322. 1539.0 @ 1859

323. 1539.0 @ 1860

324. 1539.0 @ 1861

325. 1539.0 @ 1862

326. 1539.0 @ 1863

327. 1539.0 @ 1864

328. 1539.0 @ 1865

329. 1539.0 @ 1866

330. 1539.0 @ 1867

331. 1539.0 @ 1868

332. 1539.0 @ 1869

333. 1539.0 @ 1870

334. 1539.0 @ 1871

335. 1539.0 @ 1872

336. 1539.0 @ 1873

337. 1539.0 @ 1874

338. 1539.0 @ 1875

339. 1539.0 @ 1876

340. 1539.0 @ 1877

341. 1539.0 @ 1878

342. 1539.0 @ 1879

343. 1539.0 @ 1880

344. 1539.0 @ 1881

345. 1539.0 @ 1882

346. 1539.0 @ 1883

347. 1539.0 @ 1884

348. 1539.0 @ 1885

349. 1539.0 @ 1886

350. 1539.0 @ 1887

351. 1539.0 @ 1888

352. 1539.0 @ 1889

353. 1539.0 @ 1890

354. 1539.0 @ 1891

355. 1539.0 @ 1892

356. 1539.0 @ 1893

357. 1539.0 @ 1894

358. 1539.0 @ 1895

359. 1539.0 @ 1896

360. 1539.0 @ 1897

361. 1539.0 @ 1898

362. 1539.0 @ 1899

363. 1539.0 @ 1900

364. 1539.0 @ 1901

365. 1539.0 @ 1902

366. 1539.0 @ 1903

367. 1539.0 @ 1904

368. 1539.0 @ 1905

369. 1539.0 @ 1906

370. 1539.0 @ 1907

371. 1539.0 @ 1908

372. 1539.0 @ 1909

373. 1539.0 @ 1910

374. 1539.0 @ 1911

375. 1539.0 @ 1912

376. 1539.0 @ 1913

377. 1539.0 @ 1914

378. 1539.0 @ 1915

379. 1539.0 @ 1916

380. 1539.0 @ 1917

381. 1539.0 @ 1918

382. 1539.0 @ 1919

383. 1539.0 @ 1920

384. 1539.0 @ 1921

385. 1539.0 @ 1922

386. 1539.0 @ 1923

387. 1539.0 @ 1924

388. 1539.0 @ 1925

389. 1539.0 @ 1926

390. 1539.0 @ 1927

391. 1539.0 @ 1928

392. 1539.0 @ 1929

393. 1539.0 @ 1930

394. 1539.0 @ 1931

395. 1539.0 @ 1932

396. 1539.0 @ 1933

397. 1539.0 @ 1934

398. 1539.0 @ 1935

399. 1539.0 @ 1936

400. 1539.0 @ 1937

401. 1539.0 @ 1938

402. 1539.0 @ 1939

403. 1539.0 @ 1940

404. 1539.0 @ 1941

405. 1539.0 @ 1942

406. 1539.0 @ 1943

407. 1539.0 @ 1944

408. 1539.0 @ 1945

409. 1539.0 @ 1946

410. 1539.0 @ 1947

411. 1539.0 @ 1948

412. 1539.0 @ 1949

413. 1539.0 @ 1950

414. 1539.0 @ 1951

415. 1539.0 @ 1952

416. 1539.0 @ 1953

417. 1539.0 @ 1954

418. 1539.0 @ 1955

419. 1539.0 @ 1956

420. 1539.0 @ 1957

421. 1539.0 @ 1958

422. 1539.0 @ 1959

423. 1539.0 @ 1960

424. 1539.0 @ 1961

425. 1539.0 @ 1962

426. 1539.0 @ 1963

427. 1539.0 @ 1964

428. 1539.0 @ 1965

429. 1539.0 @ 1966

430. 1539.0 @ 1967

431. 1539.0 @ 1968

432. 1539.0 @ 1969

433. 1539.0 @ 1970

434. 1539.0 @ 1971

435. 1539.0 @ 1972

436. 1539.0 @ 1973

437. 1539.0 @ 1974

438. 1539.0 @ 1975

439. 1539.0 @ 1976

440. 1539.0 @ 1977

441. 1539.0 @ 1978

442. 1539.0 @ 1979

443. 1539.0 @ 1980

444. 1539.0 @ 1981

445. 1539.0 @ 1982

446. 1539.0 @ 1983

447. 1539.0 @ 1984

448. 1539.0 @ 1985

449. 1539.0 @ 1986

450. 1539.0 @ 1987

451. 1539.0 @ 1988

452. 1539.0 @ 1989

453. 1539.0 @ 1990

454. 1539.0 @ 1991

455. 1539.0 @ 1992

456. 1539.0 @ 1993

457. 1539.0 @ 1994

458. 1539.0 @ 1995

459. 1539.0 @ 1996

460. 1539.0 @ 1997

461. 1539.0 @ 1998

462. 1539.0 @ 1999

463. 1539.0 @ 2000

464. 1539.0 @ 2001

465. 1539.0 @ 2002

466. 1539.0 @ 2003

467. 1539.0 @ 2004

468. 1539.0 @ 2005

469. 1539.0 @ 2006

470. 1539.0 @ 2007

471. 1539.0 @ 2008

472. 1539.0 @ 2009

473. 1539.0 @ 2010

474. 1539.0 @ 2011

475. 1539.0 @ 2012

476. 1539.0 @ 2013

477. 1539.0 @ 2014

478. 1539.0 @ 2015

479. 1539.0 @ 2016

480. 1539.0 @ 2017

481. 1539.0 @ 2018

482. 1539.0 @ 2019

483. 1539.0 @ 2020

484. 1539.0 @ 2021

485. 1539.0 @ 2022

486. 1539.0 @ 2023

487. 1539.0 @ 2024

488. 1539.0 @ 2025

489. 1539.0 @ 2026

490. 1539.0 @ 2027

491. 1539.0 @ 2028

492. 1539.0 @ 2029

493. 1539.0 @ 2030

494. 1539.0 @ 2031

495. 1539.0 @ 2032

496. 1539.0 @ 2033

497. 1539.0 @ 2034

498. 1539.0 @ 2035

499. 1539.0 @ 2036

500. 1539.0 @ 2037

501. 1539.0 @ 2038

502. 1539.0 @ 2039

503. 1539.0 @ 2040

504. 1539.0 @ 2041

505. 1539.0 @ 2042

506. 1539.0 @ 2043

507. 1539.0 @ 2044

508. 1539.0 @ 2045

509. 1539.0 @ 2046

510. 1539.0 @ 2047

511. 1539.0 @ 2048

512. 1539.0 @ 2049

513. 1539.0 @ 2050

514. 1539.0 @ 2051

515. 1539.0 @ 2052

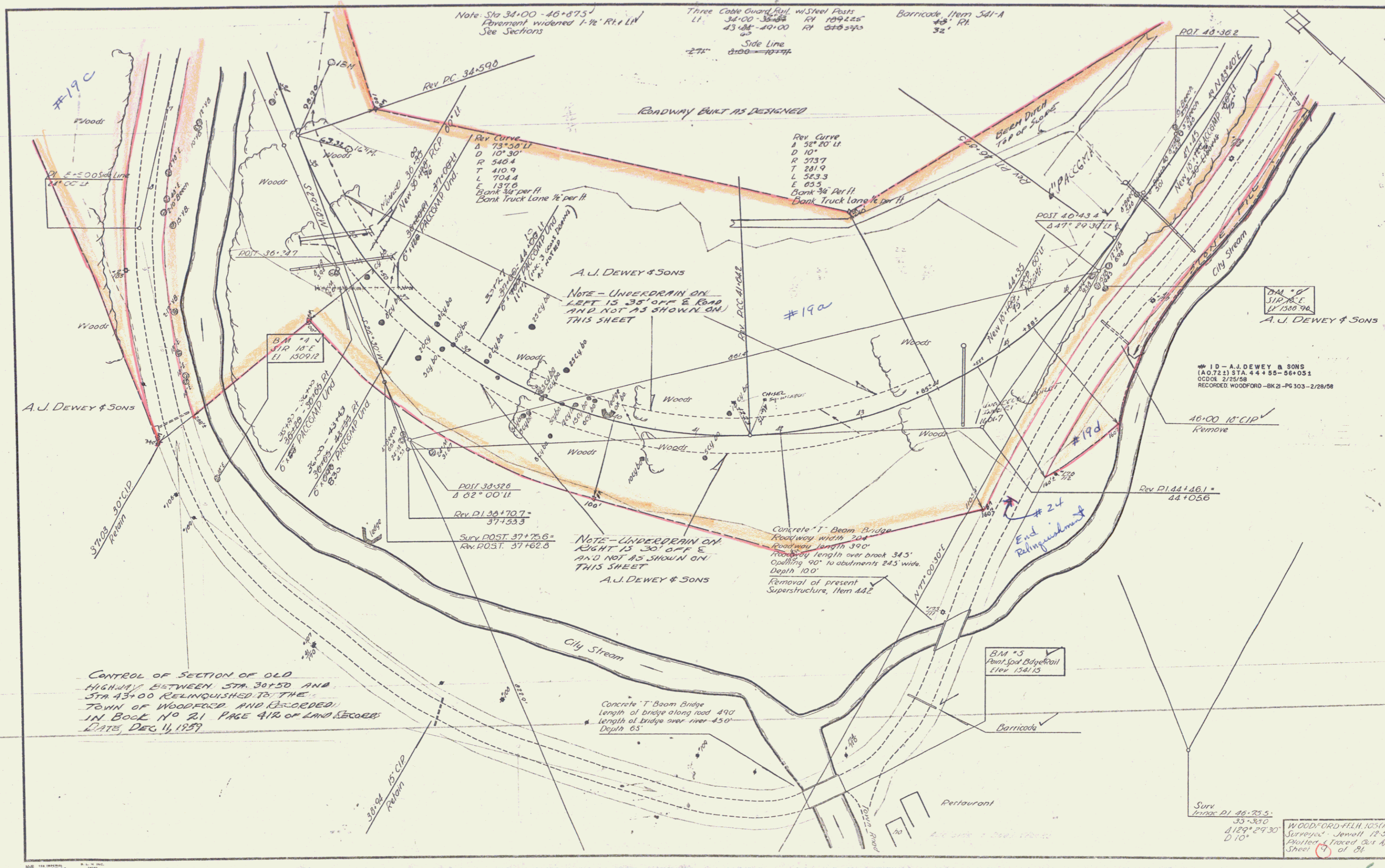
516. 1539.0 @ 2053

517. 1539.0 @ 2054

518. 1539.0 @ 2055

519. 1539.0 @ 2056

520. 1539.0 @ 2



Note: Sta 34+00 - 46+875
 Pavement widened 1-1/2' R/L/LIN
 See Sections

Three Cable Guard Rail w/ Steel Posts
 LI 34+00 - 38+50 R/L 1094.25'
 43+00 - 40+00 R/L 510.575'

Barricade Item 541-A
 45' R/L
 32'

Side Line
 -27' 0+00 - 10+74'

ROADWAY BUILT AS DESIGNED

A.J. DEWEY & SONS
 NOTE - UNDERDRAIN ON
 LEFT IS 35' OFF E. ROAD
 AND NOT AS SHOWN ON
 THIS SHEET

A.J. DEWEY & SONS
 NOTE - UNDERDRAIN ON
 RIGHT IS 30' OFF E.
 AND NOT AS SHOWN ON
 THIS SHEET

CONTROL OF SECTION OF OLD
 HIGHWAY BETWEEN STA. 30+50 AND
 STA. 43+00 RELINQUISHED TO THE
 TOWN OF WOODFORD AND RECORDED
 IN BOOK NO 21 PAGE 41R OF LAND RECORDS
 DATE, DEC 11, 1957

Concrete T-Beam Bridge
 Roadway width 204'
 Roadway length 390'
 Roadway length over brook 34.5'
 Spacing 90' to abutments 24.5' wide
 Depth 10.0'
 Removal of present
 Superstructure, Item 442

Concrete T-Beam Bridge
 Length of bridge along road 490'
 Length of bridge over river 450'
 Depth 65'

Surv
 Horiz DI 46+75.5
 35-3650
 4129' 29' 30"
 D 10'

WOODFORD-FELH, 105(141)
 Surveyed - Jenell 12-56
 Plotted & Traced Oct 50
 Sheet 17 of 24

