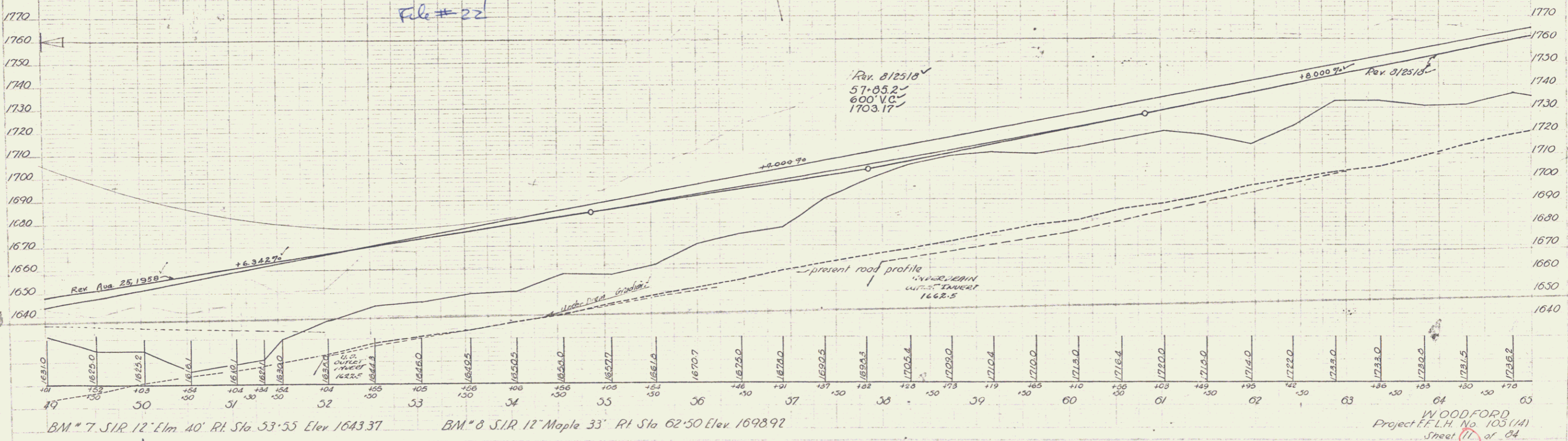
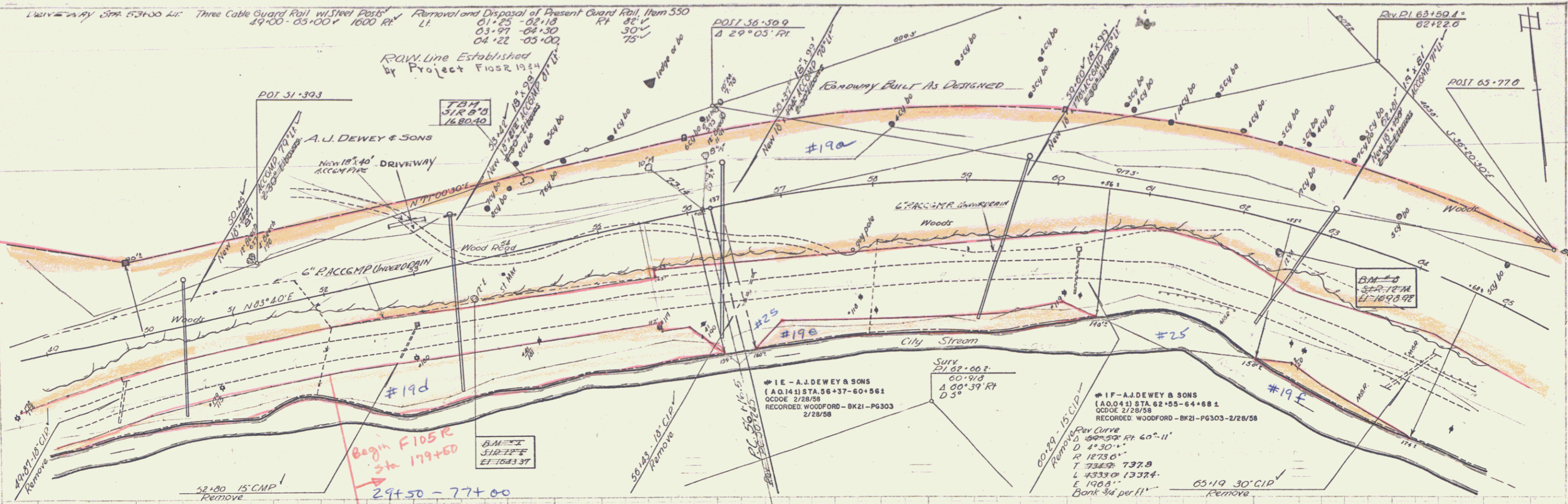


Line 5-19-57 STA 53+00 to: Three Cable Guard Rail w/Steel Posts Removal and Disposal of Present Guard Rail, Item 550
 19-00-05-00V 1000 R/L
 LI 01-25-02-18 RT 82°
 03-27-04-30 30°
 04-22-05-00 75°

ROW Line Established by Project F105R 1924



WOODFORD
 Project E.L.H. No. 103 (14)
 Sheet 11 of 34