

INDEX OF SHEETS

SHEET NO.	TITLE PAGE
1	TITLE PAGE
2	TYPICAL CROSS-SECTION OF IMPROVEMENT & SUMMARY OF QUANTITIES
3	DETAILS OF FIELD OR QUARRY STONE FIREPLACE
4	LAYOUT SHEET

FED. ROAD DIST. NO.	STATE	FED. AID PROJ. NO.	FISCAL YEAR	SHEET NO.	TOTAL SHEETS
9	VT.	105-J	1936	1	4

(LANDSCAPING)

STATE OF VERMONT  
STATE HIGHWAY DEPARTMENT

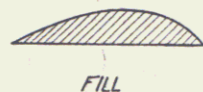
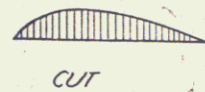
PLAN AND PROFILE OF PROPOSED  
STATE HIGHWAY  
FEDERAL AID PROJECT

ROADSIDE IMPROVEMENT  
PLANTING PLANS

PROPOSED PLANTING

TREES

- PINUS RESINOSA - 5'-6' (Red Pine)
- ACER SACCHARINUM - 10'-12' (Sugar Maple)

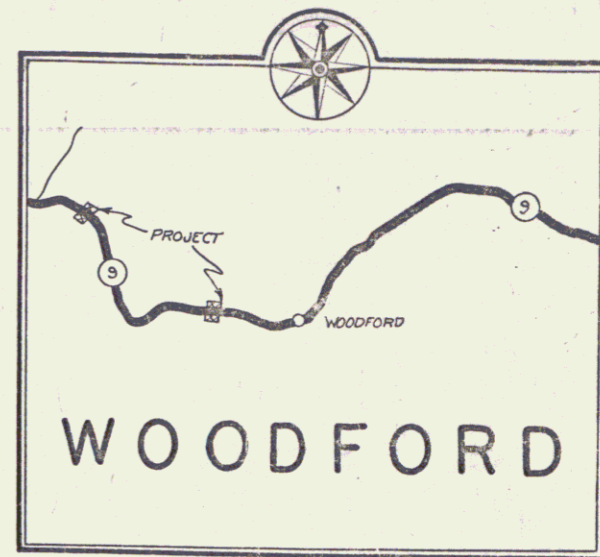


EXISTING GROWTH



TOWN OF WOODFORD  
BENNINGTON-BRATTLEBORO ROAD  
ROUTE VT9

Pin # 998813



FROM STA. 90 + 00 OF F. R. PROJECT 8-A, EASTERLY TO STA. 234 + 50 OF STATE PROJECT 105-R, EXCLUDING FROM STA. 95 + 00 OF F. R. PROJECT 8-A TO STA. 228 + 50 OF STATE PROJECT 105-R.

LENGTH OF PROJECT 1,100.0 FT. = 0.208 MILES

SCALES

TYPICAL SECTIONS: AS INDICATED  
LAYOUTS 1" = 20'

Woodford & Scarsburg  
RIGHT-OF-WAY DIVISION  
TOWN FILE

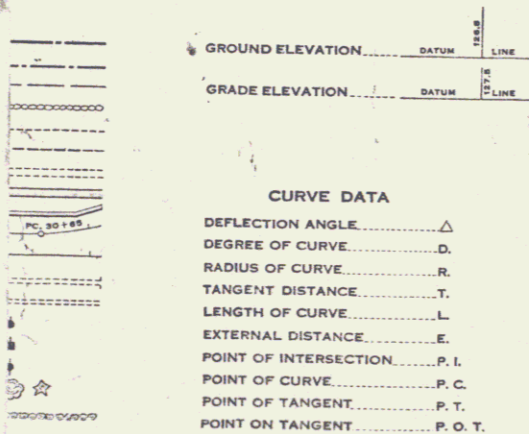
MP 1.689-1.784  
MP 4.408-4.522

APPROVED: April 6, 1936  
H. E. Langstaff  
COMMISSIONER OF HIGHWAYS  
SUBMITTED BY ORDER OF THE STATE HIGHWAY BOARD

PERPETUAL  
Town of VT9  
(To Be Returned To R.O.W. Division)

PROJECT	Woodford
NUMBER	F.A. 105-J
TYPE	Landscaping
LENGTH	0.208 MI.
YEAR TO BE COMPLETED	1936
LOCATION	BENNINGTON-BRATTLEBORO ROAD, ROUTE 9, FROM STA. 90+00 OF F. R. PROJECT 8-A, EASTERLY TO STA. 234+50 OF STATE PROJECT 105-R, EXCLUDING FROM STA. 95+00 OF F. R. PROJECT 8-A TO STA. 228+50 OF STATE PROJECT 105-R.

CONVENTIONAL SIGNS



NOTE  
These plans are subject to such revisions as may be required by the Bureau of Public Roads or the Commissioner of Highways. Construction is to be carried on in accordance with the plans and Standard Road and Bridge Specifications of 1930, including all subsequent approved revisions and such revised specifications and special provisions as are submitted with the plans.

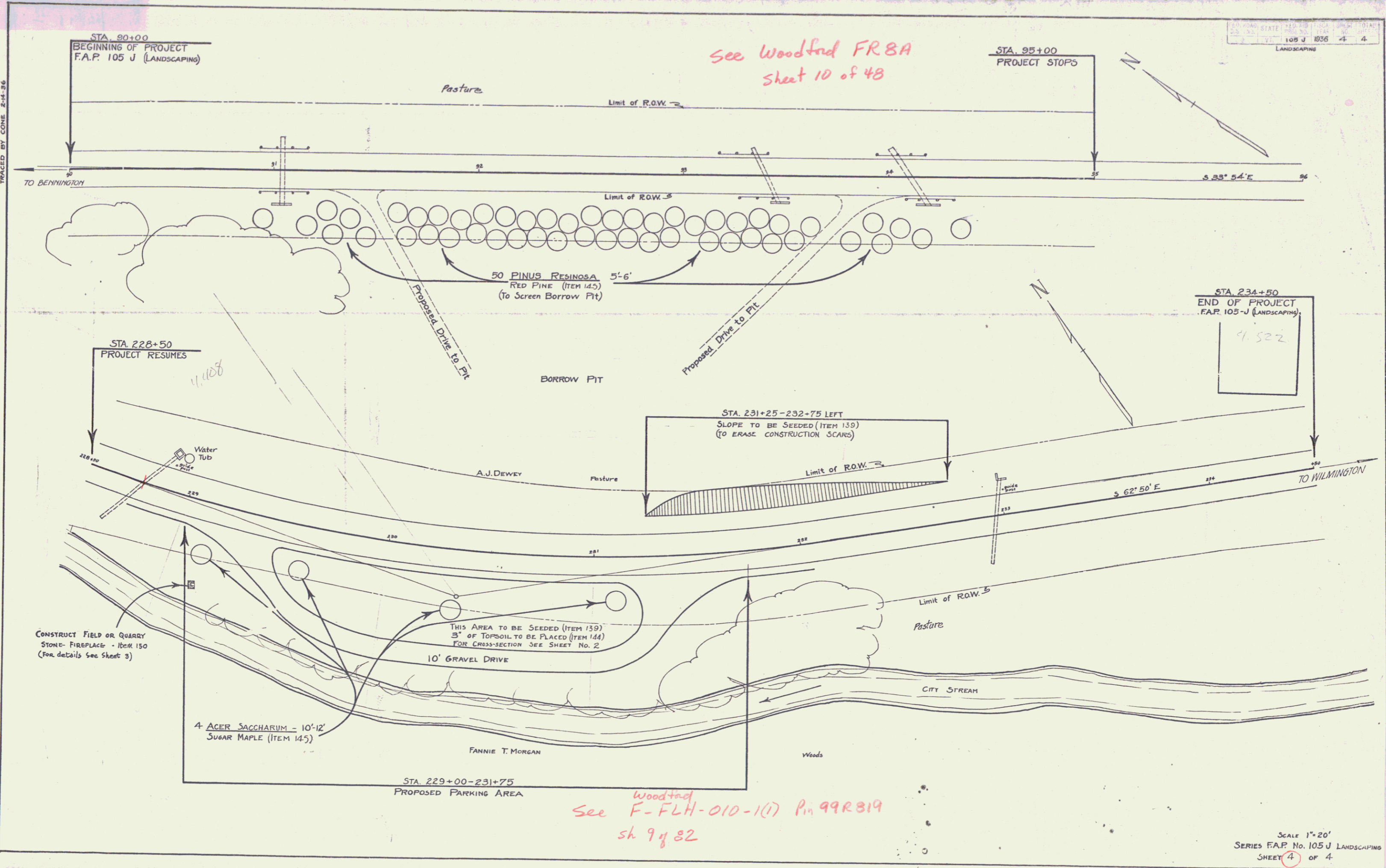
RECOMMENDED  
DISTRICT ENGINEER BUREAU OF PUBLIC ROADS

RECOMMENDED FOR APPROVAL  
CHIEF ENGINEER BUREAU OF PUBLIC ROADS

APPROVED  
DIRECTOR BUREAU OF PUBLIC ROADS

SERIES F NO. 105-J FILED  
SHEET 1 OF 4

DIST. # 1 Plans



TRACED BY CONE 2-4-86

STA. 20+00  
BEGINNING OF PROJECT  
F.A.P. 105 J (LANDSCAPING)

See Woodford FR 8A  
Sheet 10 of 48

STA. 95+00  
PROJECT STOPS

NO.	DATE	BY	REVISION
1	10/5/86	J	LANDSCAPING
2			
3			
4			

TO BENNINGTON

S 33° 54' E

STA 228+50  
PROJECT RESUMES

11.408

Water Tub

BORROW PIT

STA. 231+25-232-75 LEFT  
SLOPE TO BE SEEDED (ITEM 139)  
(TO ERASE CONSTRUCTION SCARS)

A.J. DEWEY

Limit of R.O.W.

S 62° 50' E

TO WILMINGTON

CONSTRUCT FIELD OR QUARRY  
STONE FIREPLACE - ITEM 150  
(For details see sheet 3)

THIS AREA TO BE SEEDED (ITEM 139)  
3" OF TOPSOIL TO BE PLACED (ITEM 144)  
FOR CROSS-SECTION SEE SHEET No. 2

10' GRAVEL DRIVE

4 ACER SACCHARUM - 10'-12'  
SUGAR MAPLE (ITEM 145)

FANNIE T. MORGAN

Woods

STA. 229+00-231+75  
PROPOSED PARKING AREA

Woodford  
See F-FLH-010-1(1) P. 99R319  
sh 9 of 82

SCALE 1"=20'  
SERIES F.A.P. No. 105 J LANDSCAPING  
SHEET 4 OF 4