

**INDEX OF SHEETS**

SHEET NO.	TITLE PAGE	DESCRIPTION
1	TITLE PAGE	
2	TYPICAL CROSS-SECTIONS OF IMPROVEMENT	DOUBLE BITUMINOUS SURFACE TREATMENT BITUMINOUS MACADAM SURFACE COURSE
3	PLAN AND PROFILE STA.	
4		7180+00 STA. 0+00
5		8180+00 " 22+00
6		9180+00 " 38+00
7		10180+00 " 53+00
8		11180+00 " 68+00
9		12180+00 " 84+00
10		13180+00 " 100+00
11		14180+00 " 116+00
12		15180+00 " 130+00
13		16180+00 " 144+00
14		17180+00 " 156+00
15		18180+00 " 169+00
16		19180+00 " 182+00
17		
18		
19	STANDARD STRUCTURE SHEETS	BRIDGES STA. 166+25 TO 169+40 SHEETS 17-19 NOS. 578-20-45 30 (CONCRETE ARCH BRIDGE ROAD IS APPLIED) 586-385-382-340 (CONCRETE ARCH BRIDGE ROAD IS APPLIED)
20		
21		
22		
23	CROSS SECTIONS	

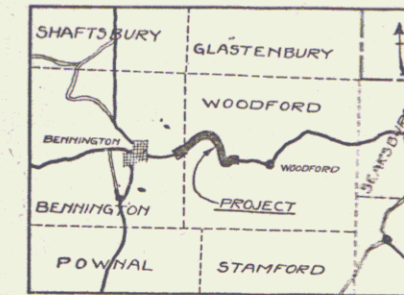
STATE OF VERMONT  
STATE HIGHWAY DEPARTMENT

PLAN AND PROFILE OF PROPOSED  
STATE HIGHWAY

FEDERAL AID PROJECT

TOWNS OF BENNINGTON-WOODFORD  
BENNINGTON-BRATTLEBORO ROAD

Pin # 99R 812



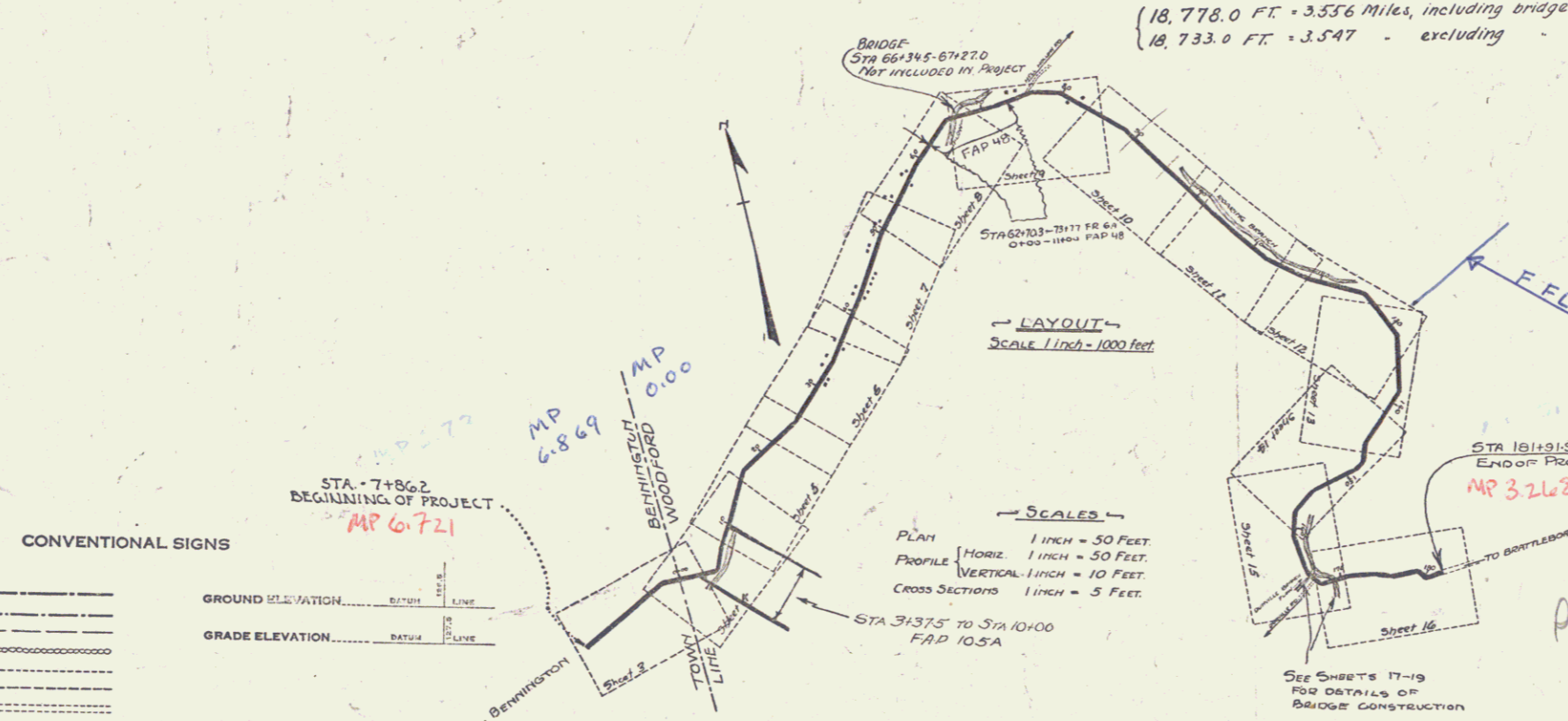
Scale - 1 Inch = 4 Miles.

BEGINNING 786 FEET SOUTH OF THE BENNINGTON — WOODFORD  
TOWN LINE AND EXTENDING EASTERLY 3.561 MILES

LENGTH OF PROJECT = { 18,803.0 FT. = 3.561 MILES INCLUDING BRIDGES OVER 20 FT SPAN } including Non-Government  
 { 18,733.0 FT. = 3.547 MILES EXCLUDING BRIDGES OVER 20 FT SPAN } Participation  
 { 18,776.0 FT. = 3.556 Miles, including bridges over 20' span } Government Participation Only  
 { 18,733.0 FT. = 3.547 - excluding }

NOTES -  
BORROW FOR THIS PROJECT TO BE OBTAINED FROM THE RIVER CHANNEL AT LOCATIONS AS DIRECTED BY THE ENGINEER.  
CRUSHED STONE FOR USE IN SURFACE + BASE COURSE, SUBBASE AND STONE FILL FOR EITHER TYPE ROAD TO BE OBTAINED FROM THE RIVER BOULDERS.

THESE PLANS SUBJECT TO SUCH REVISIONS AS MAY BE REQUIRED BY THE BUREAU OF PUBLIC ROADS OR THE CHIEF ENGINEER.  
THIS PROJECT TO BE CONSTRUCTED IN ACCORDANCE WITH STANDARD SPECIFICATIONS ON FILE WITH THE U.S. BUREAU OF PUBLIC ROADS AS APPROVED JULY 7, 1926, EXCEPT FOR BITUMINOUS MACADAM SURFACE COURSE ITEM 22 FOR WHICH REVISED SPECIFICATIONS HAVE BEEN SUBMITTED TO THE BUREAU OF PUBLIC ROADS.



**CONVENTIONAL SIGNS**

COUNTY LINE	---
TOWN LINE	---
FENCE LINE	---
STONE WALL	---
UNFENCED PROPERTY	---
GUARD RAIL	---
TRAVELED WAY	---
RAILROAD	---
RETAINING WALL	---
CENTER LINE	---
SURVEY LINE	---
CULVERT	---
DROP INLET	---
TROLLEY POLE	---
POWER POLE	---
TELEPHONE POLE	---
TREES	---
HEDGE	---

**CURVE DATA**

DEFLECTION ANGLE	Δ
DEGREE OF CURVE	D
RADIUS OF CURVE	R
TANGENT DISTANCE	T
LENGTH OF CURVE	L
EXTERNAL DISTANCE	E
POINT OF INTERSECTION	P. I.
POINT OF CURVE	P. C.
POINT OF TANGENT	P. T.
POINT ON TANGENT	P. O. T.

RIGHT-OF-WAY DIVISION  
TOWN FILE  
PERPETUAL  
Town of Wt  
(To Be Returned To R.O.W. Division)

APPROVED: *June 28th, 1928*  
*F. E. [Signature]*  
CHIEF ENGINEER

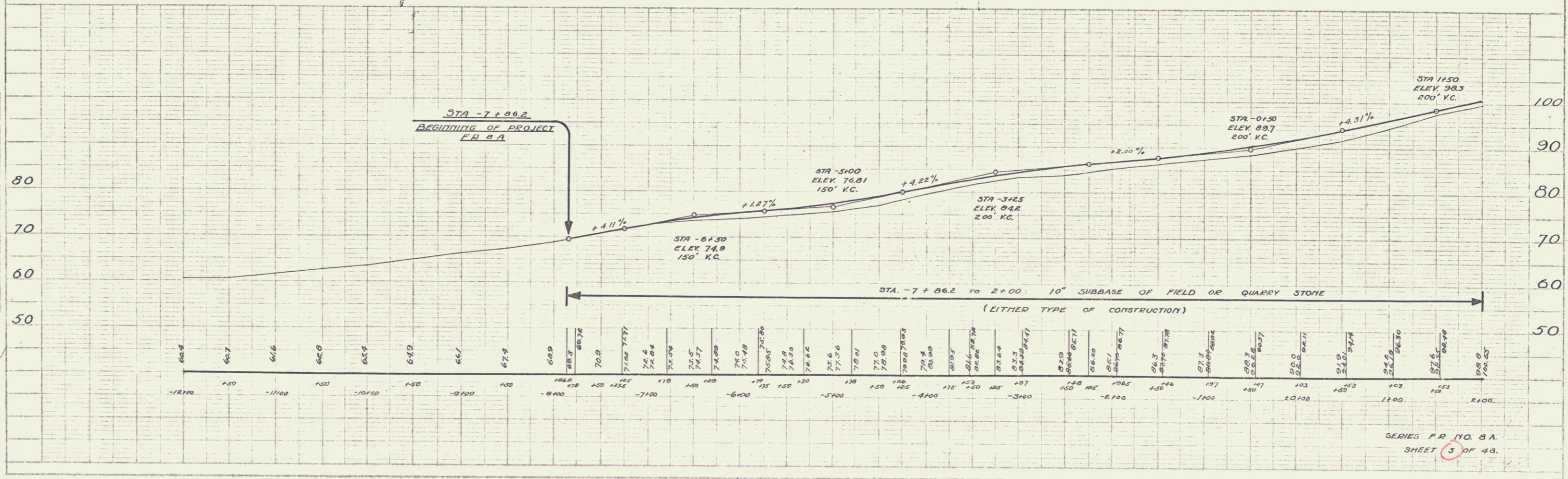
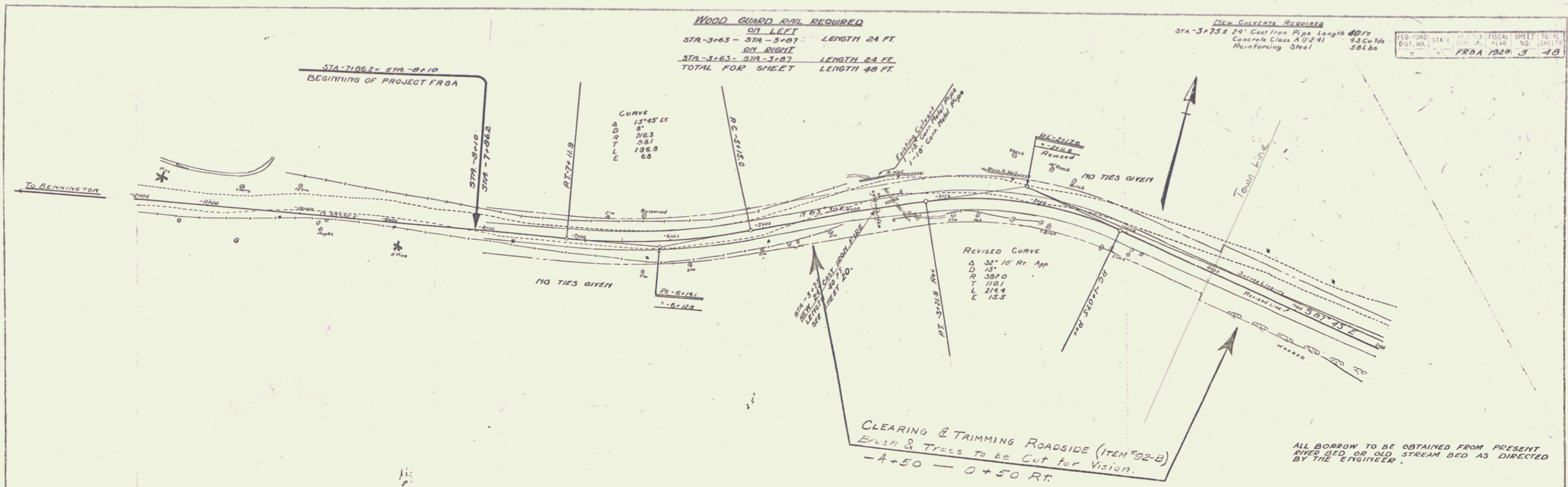
SUBMITTED BY ORDER OF THE STATE HIGHWAY BOARD  
*June 27, 1928*  
*[Signature]*  
COMMISSIONER OF HIGHWAYS

RECOMMENDED: \_\_\_\_\_  
DISTRICT ENGINEER BUREAU OF PUBLIC ROADS

RECOMMENDED FOR APPROVAL: \_\_\_\_\_  
CHIEF ENGINEER BUREAU OF PUBLIC ROADS

APPROVED: \_\_\_\_\_  
DIRECTOR BUREAU OF PUBLIC ROADS

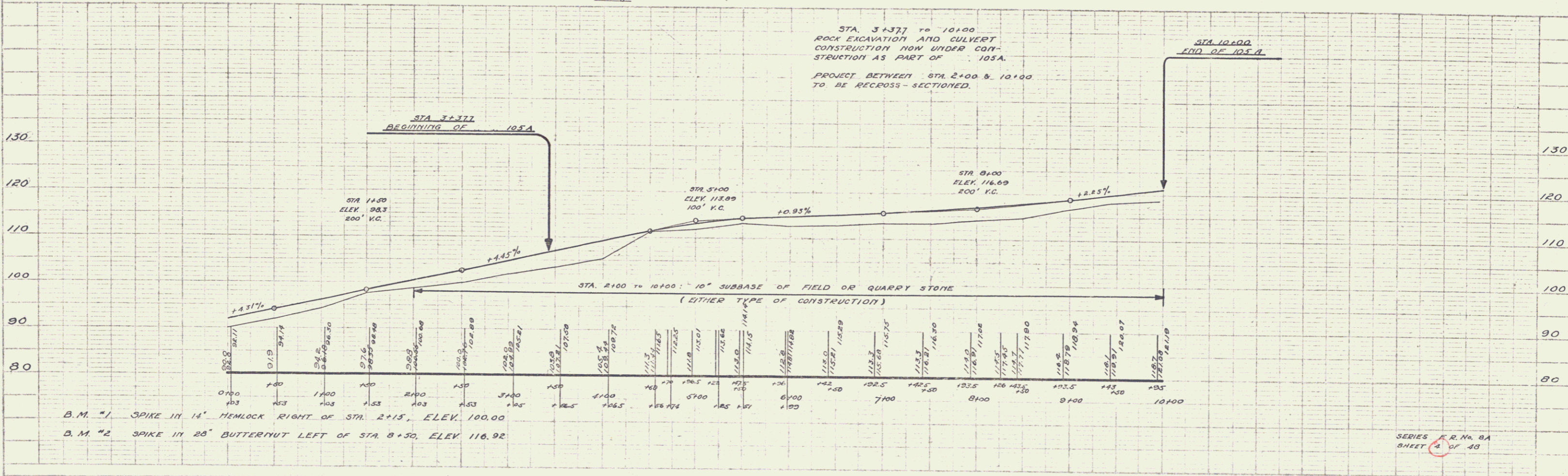
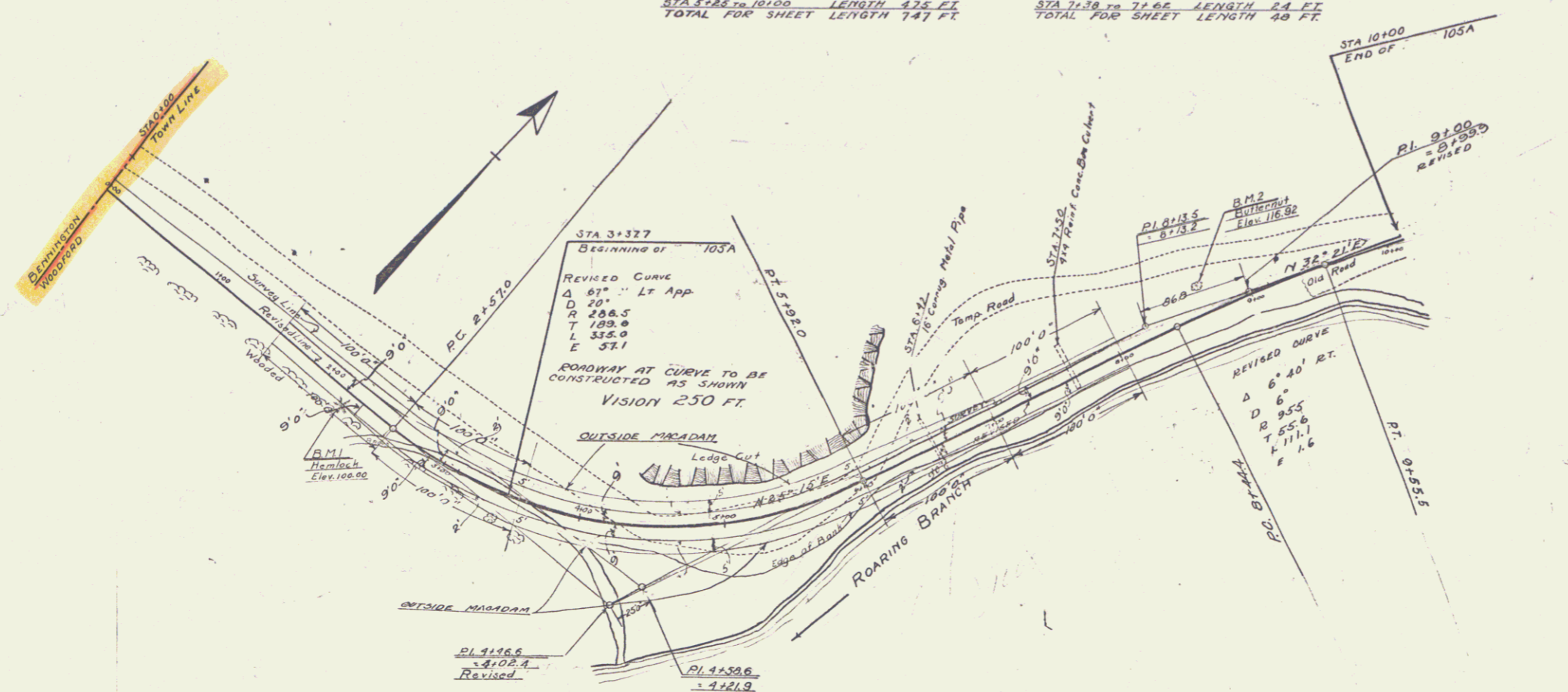
Sheet 15 & 14 MISSING



**CABLE GUARD RAIL REQUIRED**  
 01' SPIKE  
 STA 1453 TO 4125 LENGTH 272 FT  
 STA 4125 TO 10100 LENGTH 4175 FT  
 TOTAL FOR SHEET LENGTH 4447 FT

**WOOD GUARD RAIL REQUIRED**  
 01' SPIKE  
 STA 6150 TO 6154 LENGTH 24 FT  
 STA 7138 TO 7152 LENGTH 24 FT  
 TOTAL FOR SHEET LENGTH 48 FT

FRBA 1928 4 48



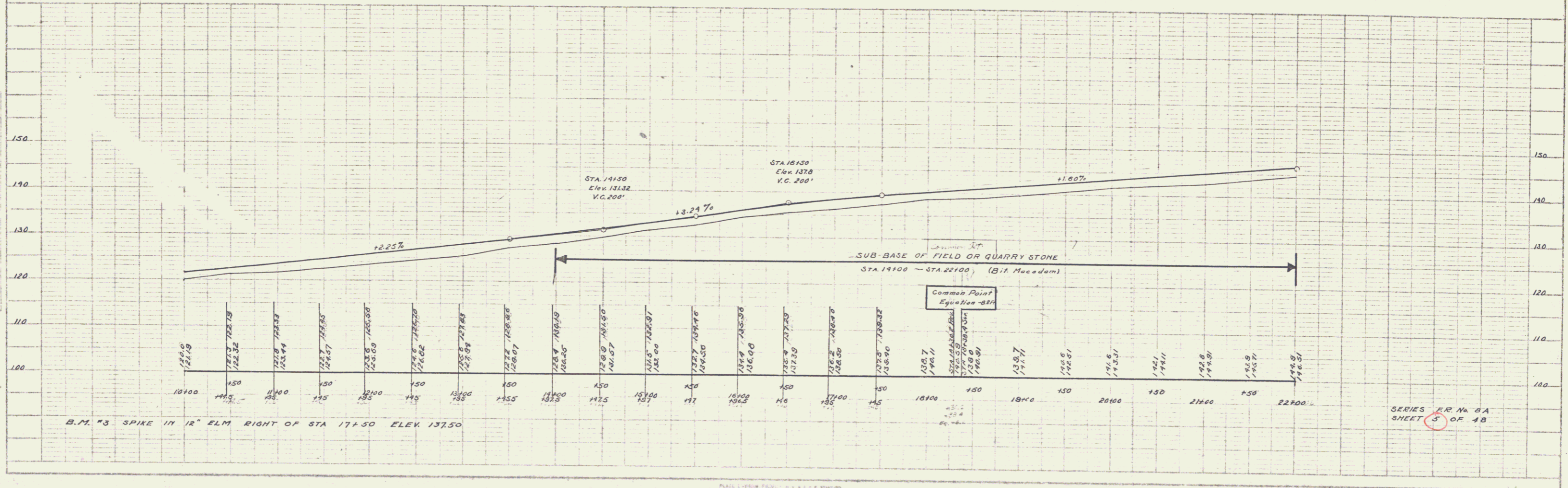
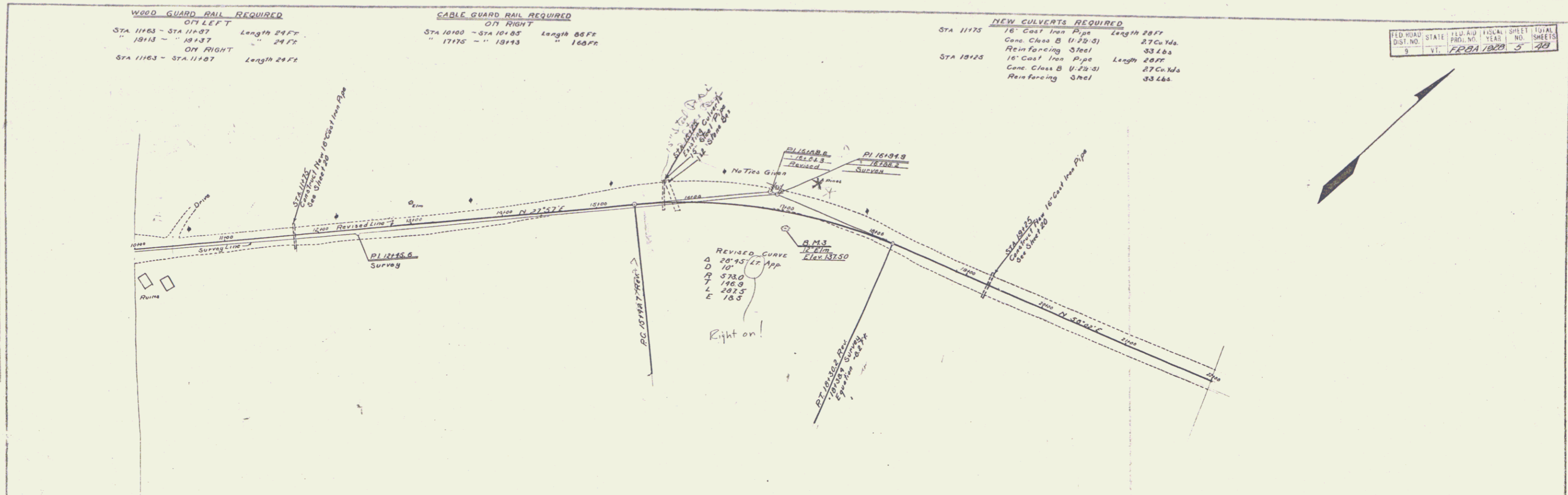
SERIES R. R. No. 8A SHEET 4 OF 48

**WOOD GUARD RAIL REQUIRED**  
 ON LEFT  
 STA 1163 - STA 1187 Length 24 FT  
 " 1813 - " 1837 " 24 FT  
 ON RIGHT  
 STA 1163 - STA 1187 Length 24 FT

**CABLE GUARD RAIL REQUIRED**  
 ON RIGHT  
 STA 10100 - STA 10185 Length 85 FT  
 " 17175 - " 19113 " 194 FT

**NEW CULVERTS REQUIRED**  
 STA 11175 16" Cast Iron Pipe Length 28 FT  
 Conc. Class B (V.29-3) 27 Cu Yds  
 Reinforcing Steel 33 Lbs  
 STA 18125 16" Cast Iron Pipe Length 28 FT  
 Conc. Class B (V.29-3) 27 Cu Yds  
 Reinforcing Steel 33 Lbs

FED. ROAD DIST. NO.	STATE	FED. AID PROJ. NO.	LOCAL PROJ. NO.	SHEET NO.	TOTAL SHEETS
5	VT.	FRDA 1000	3	48	



SERIES P.R. No. 6A  
 SHEET 5 OF 48

**WOOD GUARD RAIL REQUIRED**

**ON LEFT**

STA 22+63 TO STA 22+87	LENGTH	24 FT
27+78 - 28+02		24 FT
35+38 - 35+62		24 FT
37+38 - 37+62		24 FT

**ON RIGHT**

STA 22+63 TO STA 22+87	LENGTH	24 FT
27+78 - 28+02		24 FT
35+38 - 35+62		24 FT
37+38 - 37+62		24 FT

**NEW CULVERTS REQUIRED**

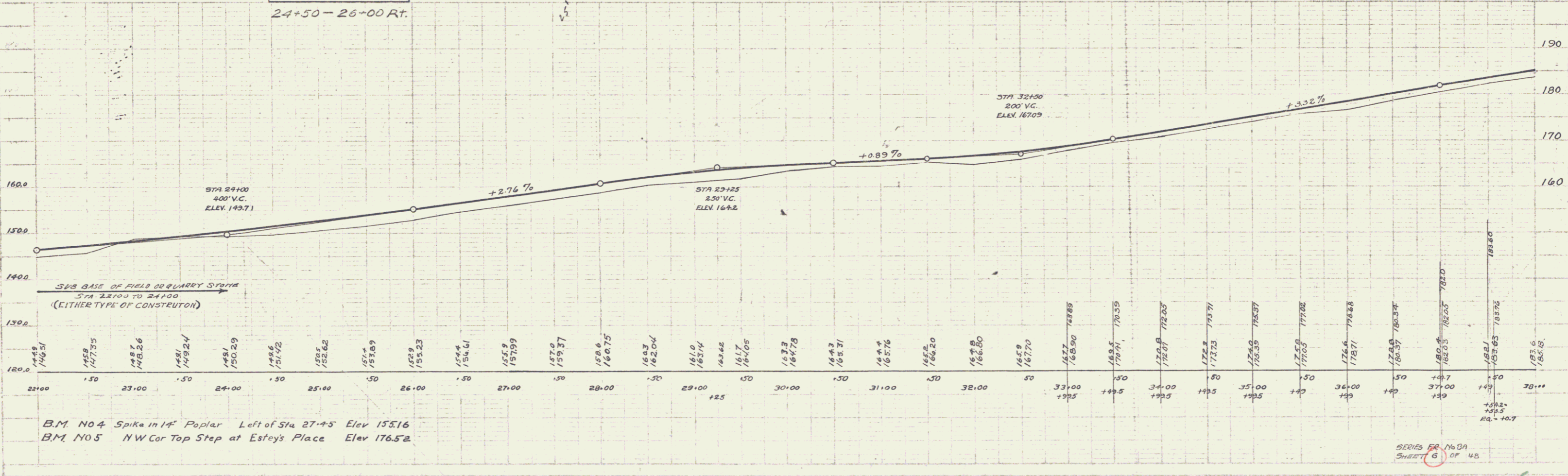
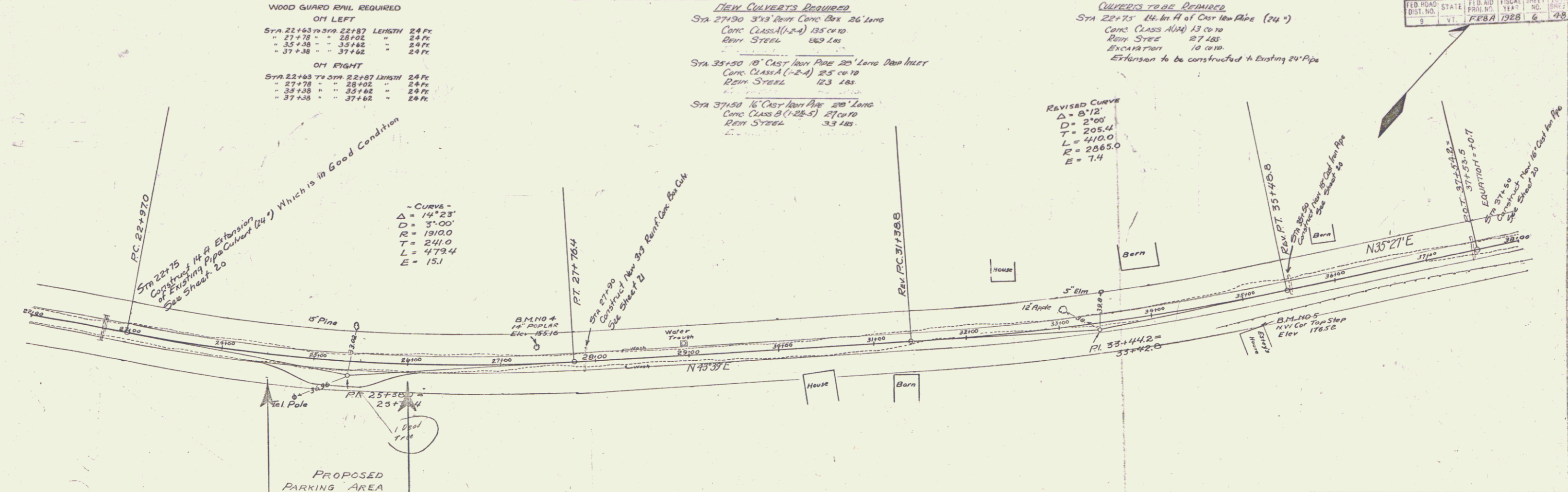
- STA 27+90 3'x3' Rein Conc Box 26' Long  
 Conc. CLASS A (1-2-4) 135 cu yd  
 Rein Steel 189 lbs
- STA 35+50 18" Cast Iron Pipe 25' Long  
 Conc. CLASS A (1-2-4) 25 cu yd  
 Rein Steel 123 lbs
- STA 37+50 16" Cast Iron Pipe 20' Long  
 Conc. CLASS B (1-2-5) 27 cu yd  
 Rein Steel 33 lbs

**CULVERTS TO BE REPAIRED**

- STA 22+75 14" In A of Cast Iron Pipe (24")  
 Conc. CLASS A (1-2-4) 13 cu yd  
 Rein Steel 27 lbs  
 Excavation 10 cu yd  
 Extension to be constructed to Existing 24" Pipe

REVISED CURVE  
 $\Delta = 87.12^\circ$   
 $D = 2700'$   
 $T = 205.4'$   
 $L = 410.0'$   
 $R = 2665.0'$   
 $E = 7.4'$

- CURVE -  
 $\Delta = 141.23^\circ$   
 $D = 3700'$   
 $R = 1910.0'$   
 $T = 241.0'$   
 $L = 479.4'$   
 $E = 15.1'$



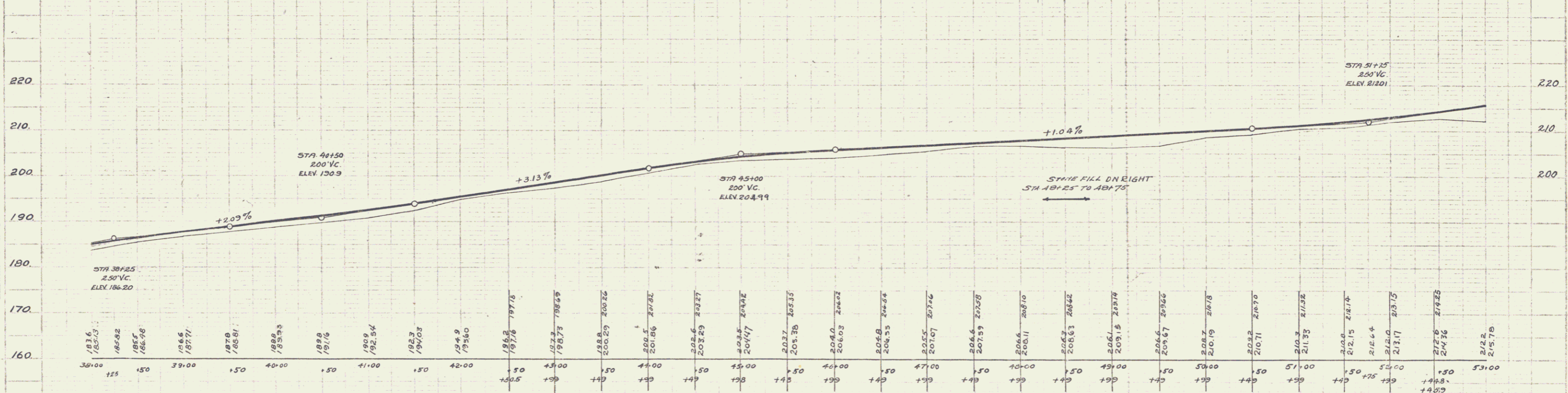
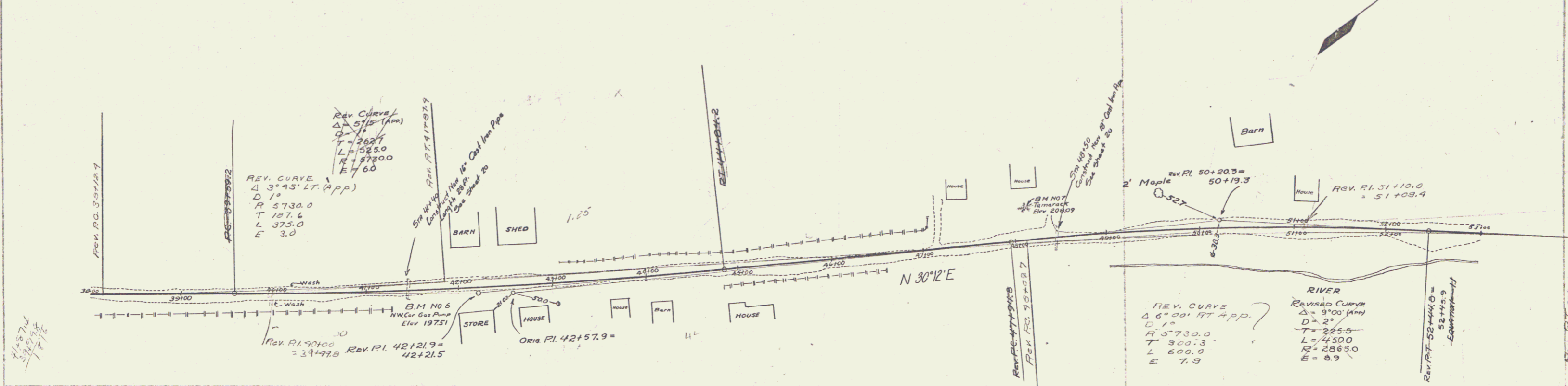
B.M. NO 4 Spike in 14" Poplar Left of Sta 27+25 Elev 155.16  
 B.M. NO 5 NW Cor Top Step at Estey's Place Elev 176.52

5

WOOD GUARD RAIL REQUIRED  
 0M LEFT  
 STA 41+28 TO STA 41+52 LENGTH 24 FT  
 " 48+28 " " 48+52 " 24 FT  
 0M RIGHT  
 STA 41+28 TO STA 41+52 LENGTH 24 FT  
 " 48+28 " " 48+52 " 24 FT

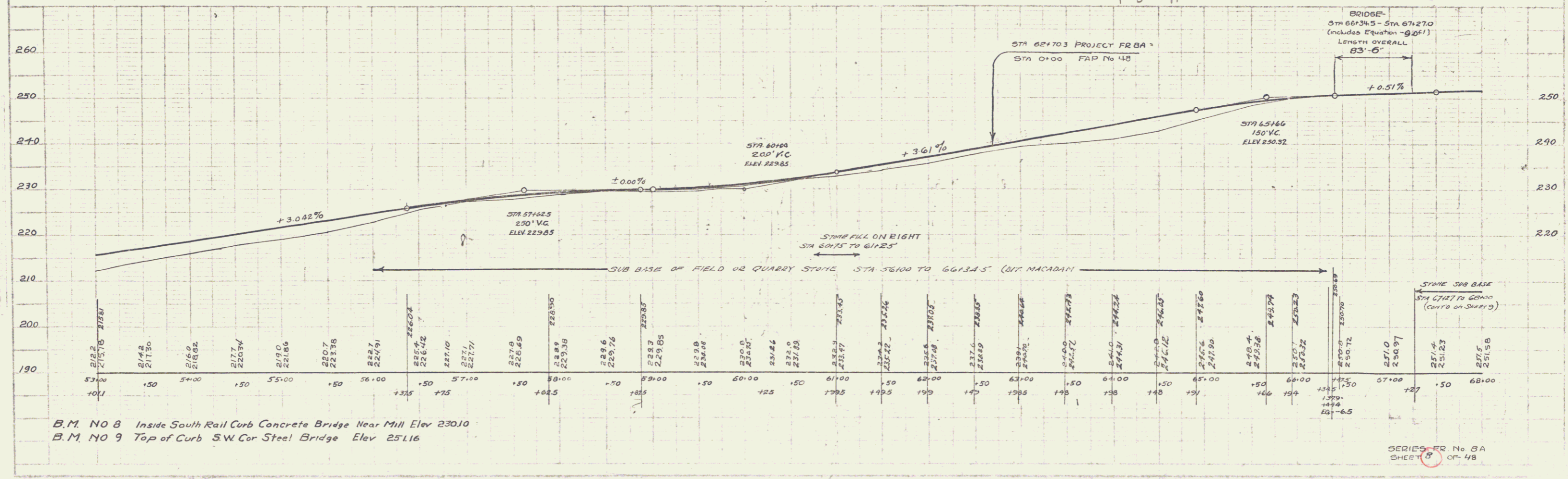
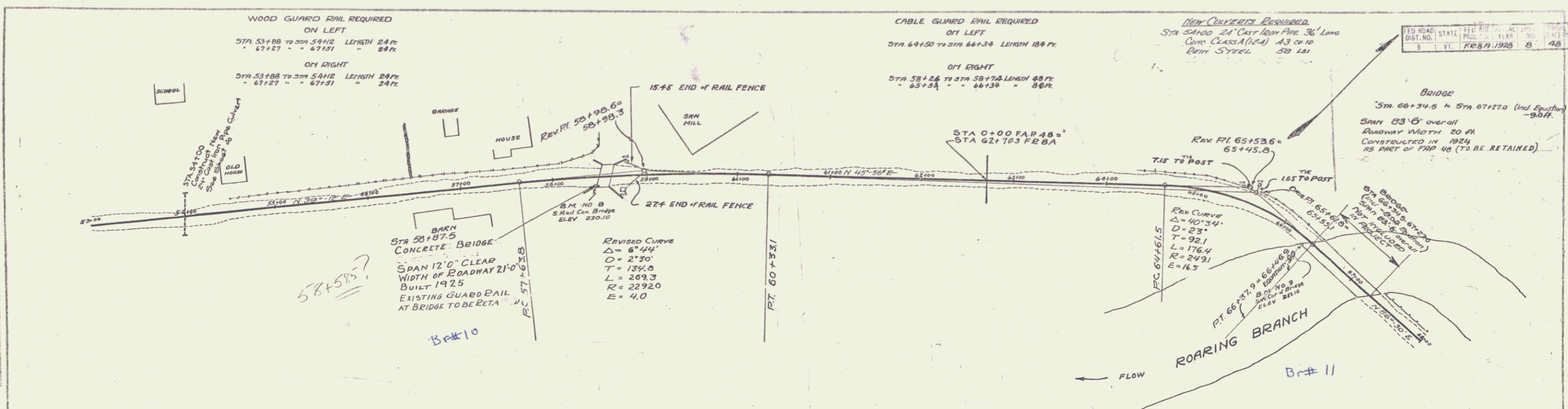
NEW CULVERTS REQUIRED  
 STA 41+40 16' CURV IRON PIPE 20' LONG  
 CONC. CLASS B (12x5) 27 cu yd  
 REIN. STEEL 33 lbs  
 STA 48+50 18' CURV IRON PIPE 20' LONG  
 CONC. CLASS B (12x5) 31 cu yd  
 REIN. STEEL 33 lbs

FIELD ROAD DIST. NO.	STATE	FED. AID PROJ. NO.	FISCAL YEAR	SHEET NO.
9	VT	FE87	1988	7



B.M. NO 6 N.W. Cor Concrete Gas Pump Base, Caron's Store Elev 197.51  
 B.M. NO 7 Nail in 12" Tamarack Left of Sta 28+12 Elev 209.09

SERIES 1216.00  
 SHEET 7 OF 48





**WOOD GUARD RAIL REQUIRED**

**ON LEFT**

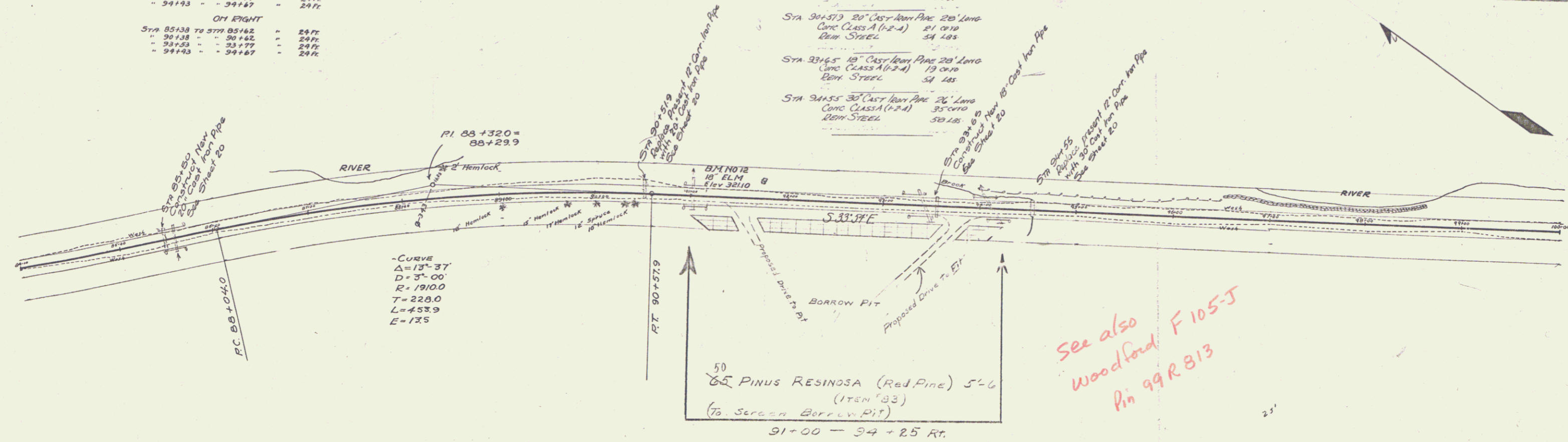
STA	FROM STA	TO STA	LENGTH	EST.
85+38	85+38	85+62	24 FT	
90+38	90+38	90+62	24 FT	
93+33	93+33	93+77	24 FT	
94+33	94+33	94+57	24 FT	

**ON RIGHT**

STA	FROM STA	TO STA	LENGTH	EST.
85+38	85+38	85+62	24 FT	
90+38	90+38	90+62	24 FT	
93+33	93+33	93+77	24 FT	
94+33	94+33	94+57	24 FT	

**NEW CONCRETE REQUIRED**

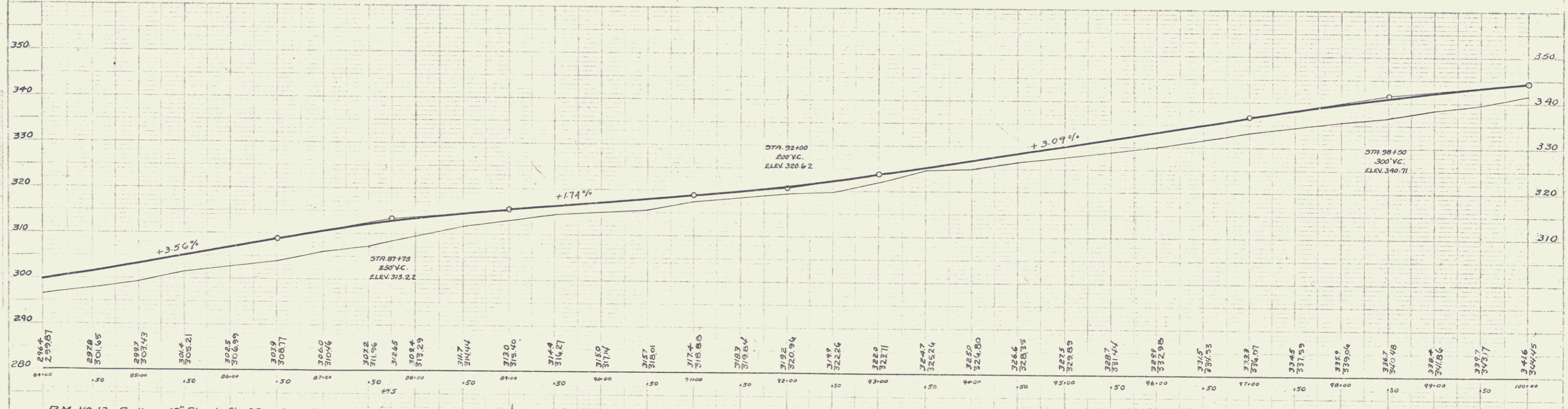
STA	CONCRETE TYPE	LENGTH	EST.
85+50	20" Cast Iron Pipe 20' Long	21' 0" 10	
	CONC. CLASS A (1-2-4)	21' 0" 10	
	REIN. STEEL	54 LBS	
90+50	20" Cast Iron Pipe 20' Long	21' 0" 10	
	CONC. CLASS A (1-2-4)	21' 0" 10	
	REIN. STEEL	54 LBS	
93+65	18" Cast Iron Pipe 20' Long	19' 0" 10	
	CONC. CLASS A (1-2-4)	19' 0" 10	
	REIN. STEEL	54 LBS	
94+55	30" Cast Iron Pipe 20' Long	35' 0" 10	
	CONC. CLASS A (1-2-4)	35' 0" 10	
	REIN. STEEL	50 LBS	



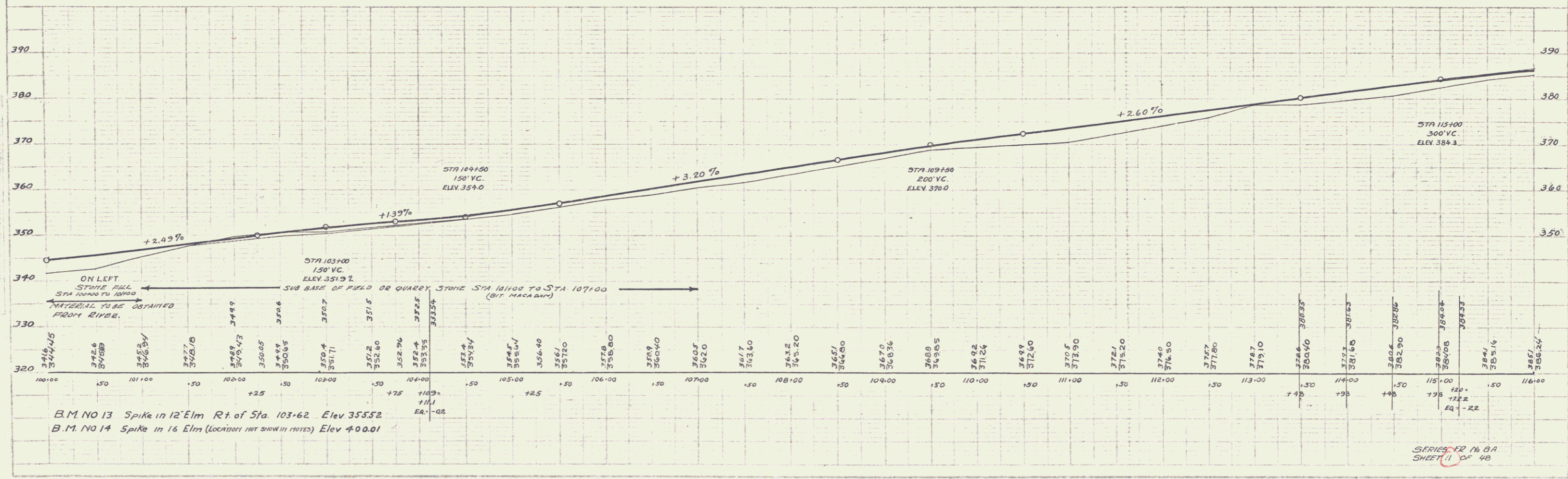
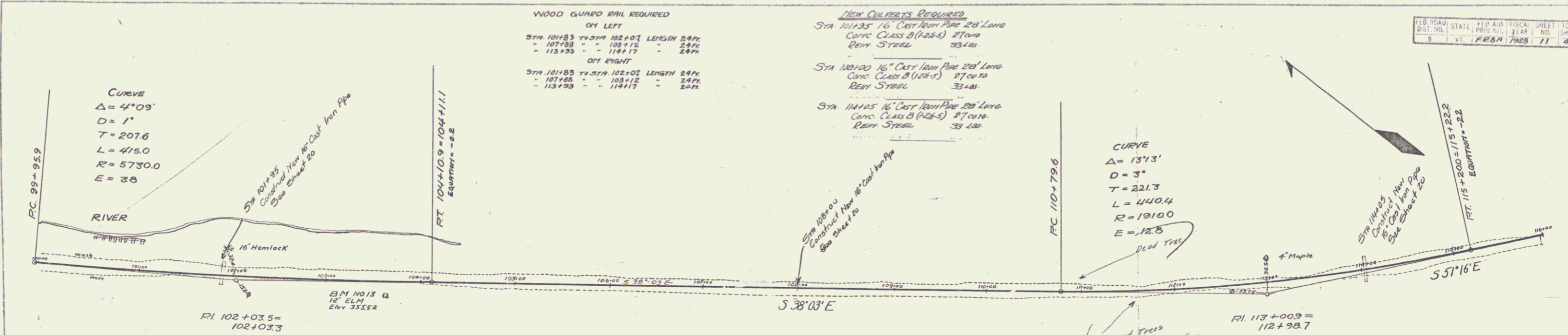
- Curve  
 $\Delta = 13^\circ 37'$   
 $D = 3^\circ 00'$   
 $R = 1910.0$   
 $T = 228.0$   
 $L = 453.9$   
 $E = 175$

50  
 65 PINUS RESINOSA (Red Pine) 5'-6"  
 (175N '83)  
 (To SERRAN BORROW PIT)  
 91+00 - 94+25 RT.

See also  
 Woodford F105-J  
 Pin 99R813



B.M. NO 12 Spike in 18" Elm Left of Sta. 91+75 Elev 321.10



WOOD GUARD RAIL REQUIRED  
ON LEFT

Sta 123+08 TO Sta 123+32	LENGTH	24 FT
124+08	"	24 FT
124+32	"	24 FT
124+56	"	24 FT

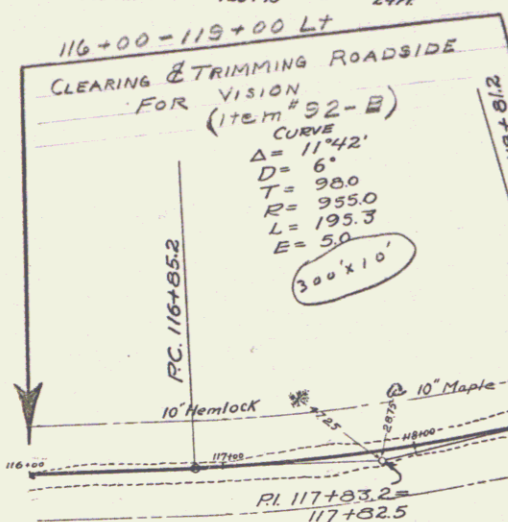
ON RIGHT

Sta 121+88 TO Sta 121+92	LENGTH	24 FT
123+08	"	24 FT
124+08	"	24 FT
124+32	"	24 FT
124+56	"	24 FT

CABLE GUARD RAIL REQUIRED  
ON LEFT

Sta 120+25 TO Sta 121+77 LENGTH 152 FT

BORROW  
Sta 120+00 TO 125+00 LEFT  
BORROW TO BE OBTAINED FROM  
THIS SECTION AT THE DIRECT-  
ION OF THE ENGINEER



$PI = 7+69 \pm$  FFLH105(14)

$PI 125+43.4 =$   
 $125+32.2$

NEW CURBS REQUIRED

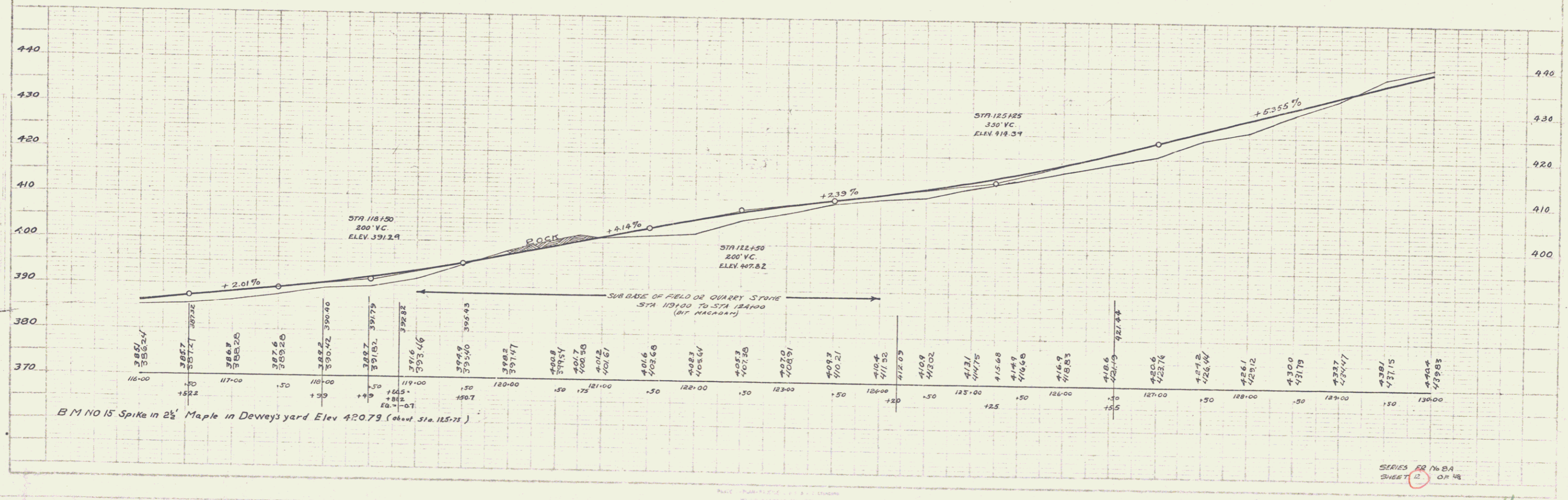
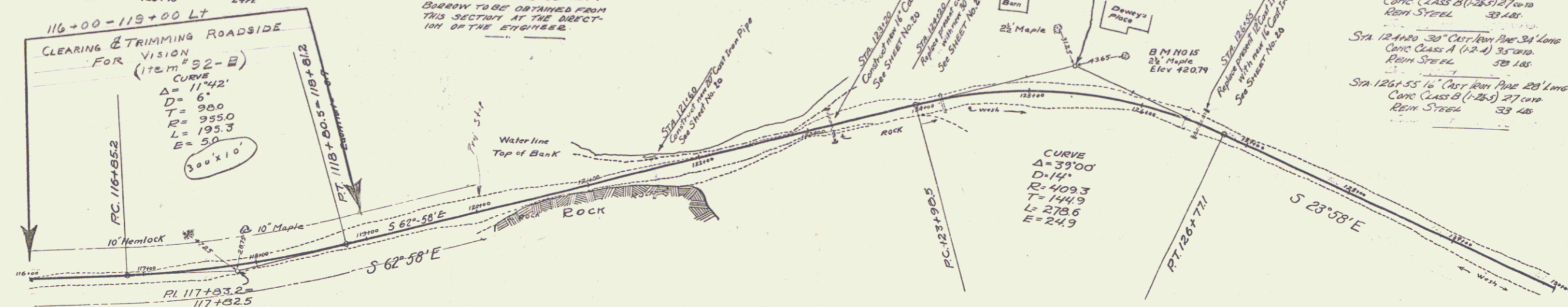
Sta 121+60 24" Cast Iron Pipe 28' Long  
Cone Class A (1.2-A) 28' Long  
Rein. Steel 34 LB

Sta 123+20 16" Cast Iron Pipe 32' Long  
Cone Class B (1.2-B) 27' Long  
Rein. Steel 33 LB

Sta 124+20 30" Cast Iron Pipe 34' Long  
Cone Class A (1.2-A) 35' Long  
Rein. Steel 50 LB

Sta 126+55 16" Cast Iron Pipe 28' Long  
Cone Class B (1.2-B) 27' Long  
Rein. Steel 33 LB

DIST. NO.	STATE	FED. AID	FISCAL YEAR	SHEET NO.	TOTAL SHEETS
9	VT		FEB 1928	18	48



SERIES FOR NO. 2A  
SHEET 12 OF 48



