

WOOD GUARD RAIL REQUIRED

ON LEFT

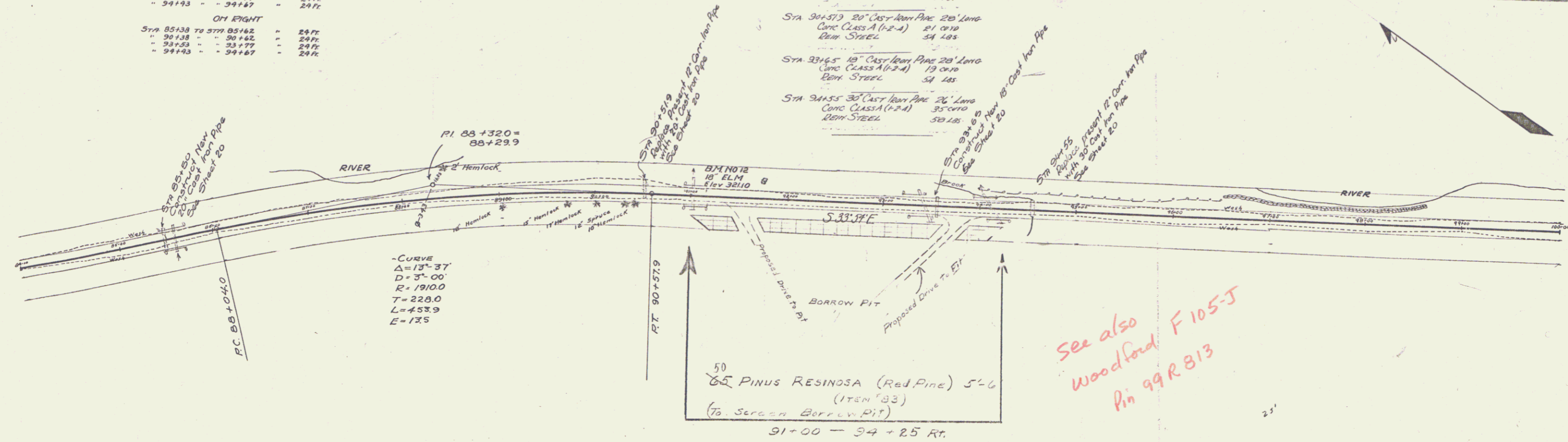
STA	FROM STA	TO STA	LENGTH	EST.
85+38	74+37.9	85+42		24 FT.
"	90+38	"	90+42	24 FT.
"	93+33	"	93+77	24 FT.
"	94+33	"	94+47	24 FT.

ON RIGHT

STA	FROM STA	TO STA	LENGTH	EST.
85+38	74+37.9	85+42		24 FT.
"	90+38	"	90+42	24 FT.
"	93+33	"	93+77	24 FT.
"	94+33	"	94+47	24 FT.

NEW CULVERTS REQUIRED

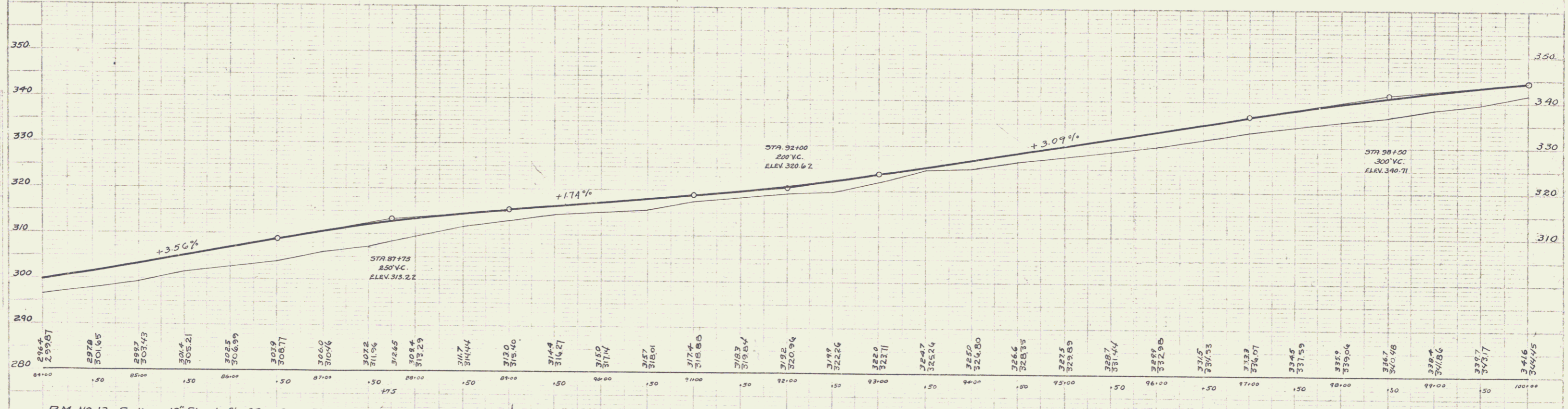
STA	CONC. CLASS	PIPE SIZE	LENGTH	EST.
85+50	20" CAST IRON PIPE	20' LONG	21' 0" 10	54 185
90+50	20" CAST IRON PIPE	20' LONG	21' 0" 10	54 185
93+65	18" CAST IRON PIPE	20' LONG	19' 0" 10	54 185
94+55	30" CAST IRON PIPE	26' LONG	35' 0" 10	50 185



- CURVE
 $\Delta = 13^\circ 37'$
 $D = 3^\circ 00'$
 $R = 1910.0$
 $T = 228.0$
 $L = 453.9$
 $E = 175$

50
 65 PINUS RESINOSA (Red Pine) 5'-6"
 (175N '83)
 (To SERRAN BORROW PIT)
 91+00 - 94+25 RT.

See also
 Woodford F105-J
 Pin 99R813



B.M. NO 12 Spike in 18" Elm Left of Sta. 91+75 Elev 321.10