

WOOD GUARD RAIL REQUIRED

ON LEFT

STA 22+63 TO STA 22+87	LENGTH	24 FT
27+78 - 28+02		24 FT
35+38 - 35+62		24 FT
37+38 - 37+62		24 FT

ON RIGHT

STA 22+63 TO STA 22+87	LENGTH	24 FT
27+78 - 28+02		24 FT
35+38 - 35+62		24 FT
37+38 - 37+62		24 FT

NEW CULVERTS REQUIRED

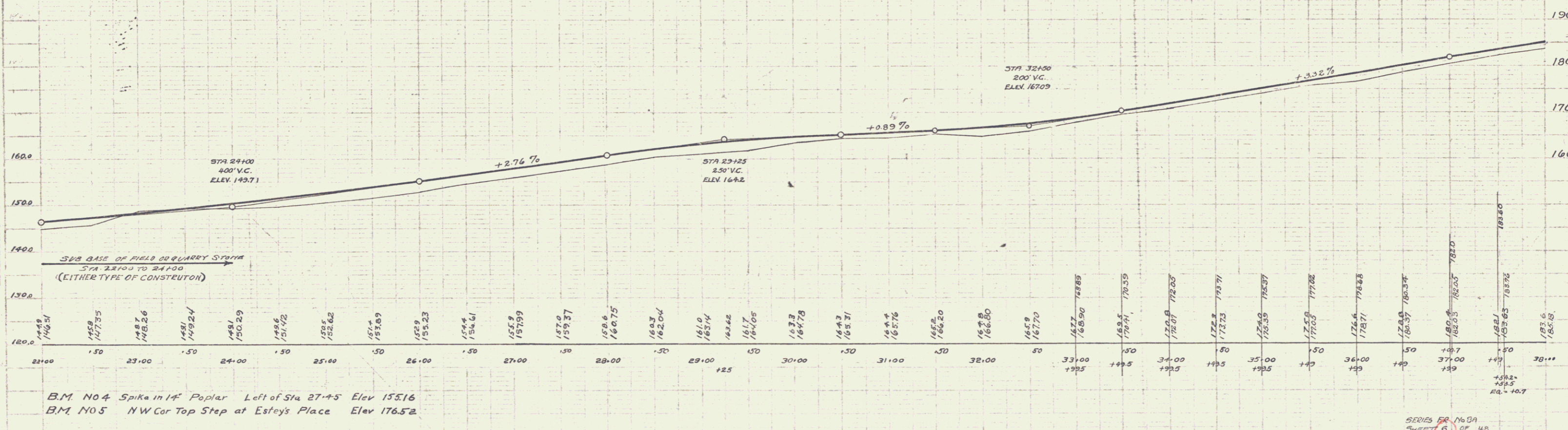
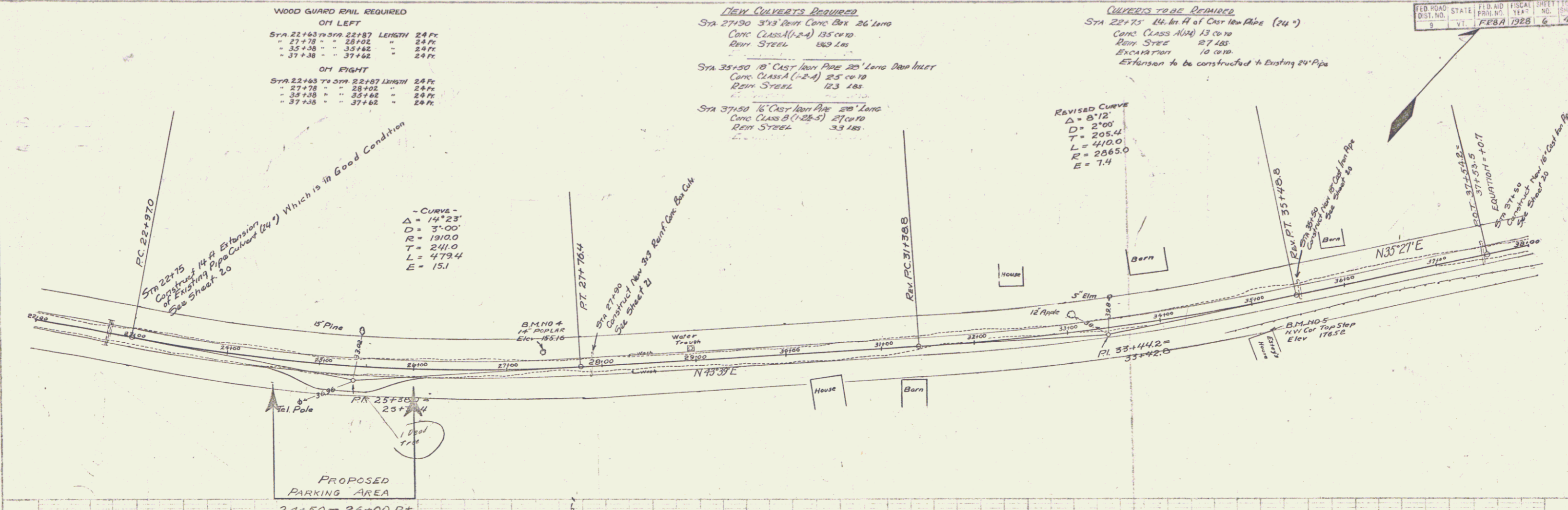
- STA 27+90 3'x3' Rein Conc Box 26' Long
 Conc. CLASS A (1-2-4) 135 cu yd
 Rein Steel 183 lbs
- STA 35+50 18" Cast Iron Pipe 25' Long
 Conc. CLASS A (1-2-4) 25 cu yd
 Rein Steel 123 lbs
- STA 37+50 16" Cast Iron Pipe 20' Long
 Conc. CLASS B (1-2-5) 27 cu yd
 Rein Steel 33 lbs

CULVERTS TO BE REPAIRED

- STA 22+75 14" In A of Cast Iron Pipe (24")
 Conc. CLASS A (1-2-4) 13 cu yd
 Rein Steel 27 lbs
 Excavation 10 cu yd
 Extension to be constructed to Existing 24" Pipe

REVISED CURVE
 $\Delta = 87.12^\circ$
 $D = 2700'$
 $T = 205.4'$
 $L = 410.0'$
 $R = 2865.0'$
 $E = 7.4'$

- CURVE -
 $\Delta = 141.23^\circ$
 $D = 3700'$
 $R = 1910.0'$
 $T = 241.0'$
 $L = 479.4'$
 $E = 15.1'$



B.M. NO 4 Spike in 14" Poplar Left of Sta 27+75 Elev 155.16
 B.M. NO 5 NW Cor Top Step at Estey's Place Elev 176.52

5