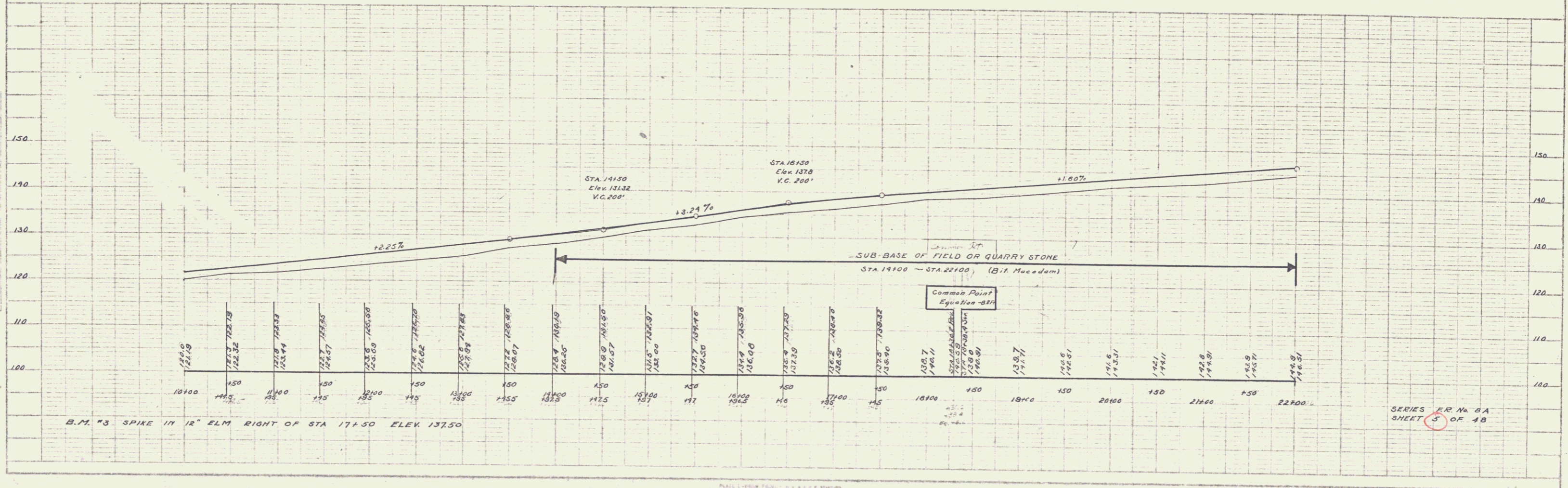
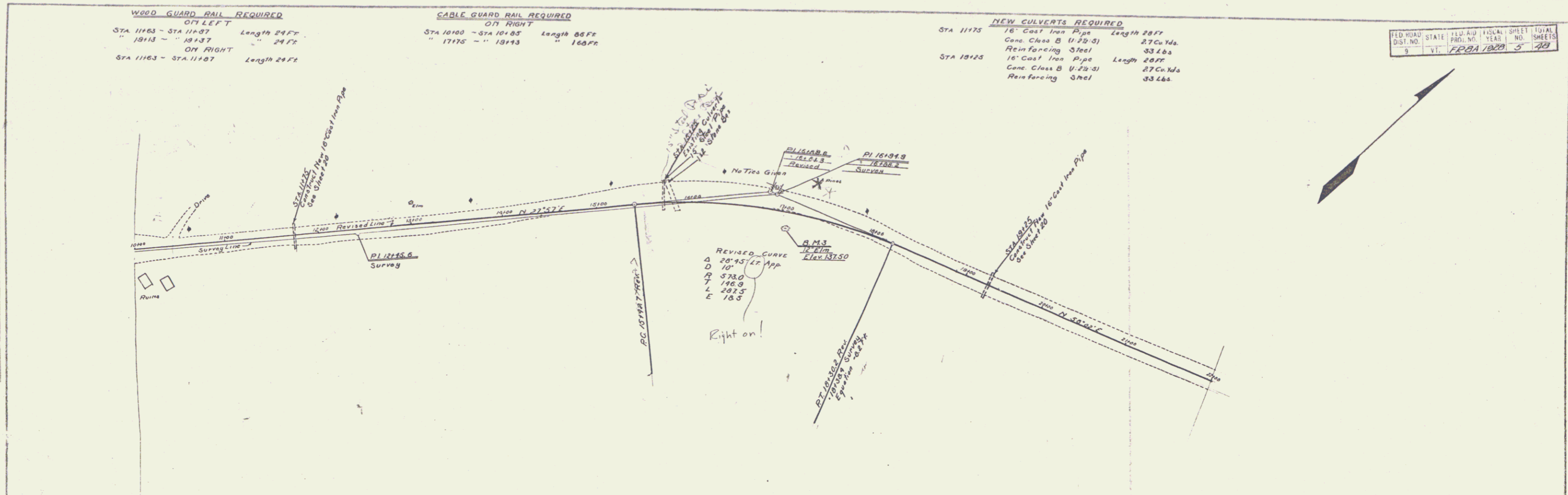


WOOD GUARD RAIL REQUIRED
 ON LEFT
 STA 1163 - STA 1187 Length 24 FT
 " 1813 - " 1837 " 24 FT
 ON RIGHT
 STA 1163 - STA 1187 Length 24 FT

CABLE GUARD RAIL REQUIRED
 ON RIGHT
 STA 1010 - STA 1045 Length 35 FT
 " 1775 - " 1813 " 38 FT

NEW CULVERTS REQUIRED
 STA 1175 16" Cast Iron Pipe Length 28 FT
 Conc. Class B (V.25-3) 27 Cu Yds
 Reinforcing Steel 33 Lbs
 STA 1825 16" Cast Iron Pipe Length 28 FT
 Conc. Class B (V.25-3) 27 Cu Yds
 Reinforcing Steel 33 Lbs

FED. ROAD DIST. NO.	STATE	FED. AID PROJ. NO.	LOCAL PROJ. NO.	SHEET NO.	TOTAL SHEETS
5	VT.	FRDA 1000	3	48	



SERIES P.R. No. 6A
 SHEET 5 OF 48