

INDEX OF SHEETS

SHEET NO.	TITLE	PAGE
1	TYPICAL CROSS-SECTION OF IMPROVEMENT	1
2	BANKING AND WIDENING TABLES	2-33
3-15	PLAN AND PROFILE SHEETS	3-15
16	STANDARD STRUCTURE SHEET	3-23
17	"	3-23
18	"	3-30
19	"	3-31
20	"	3-31
21-25	CROSS SECTION SHEETS	

STANDARD STRUCTURE SHEETS APPROVED
BY THE CHIEF ENGINEER
3-23 & 25 ON JULY 21 1933
3-30 ON NOV. 13 1933
3-31 ON JULY 25 1934

PROJECT	Bennington Troy, N.Y. road
NUMBER	F.A.P. 210
TYPE	One course concrete pavement
CONTRACTOR	C. Blinn, Jr.
LOCATION	Bennington Troy, N.Y. road. Beginning at a point 0.314 miles westerly of the junction of Rt. 9 and road to Bennington Battle Monument and extending westerly 3.122 miles to the N.Y. State Line.
DATE	1934

**STATE OF VERMONT
STATE HIGHWAY DEPARTMENT**

**PLAN AND PROFILE OF PROPOSED
STATE HIGHWAY**

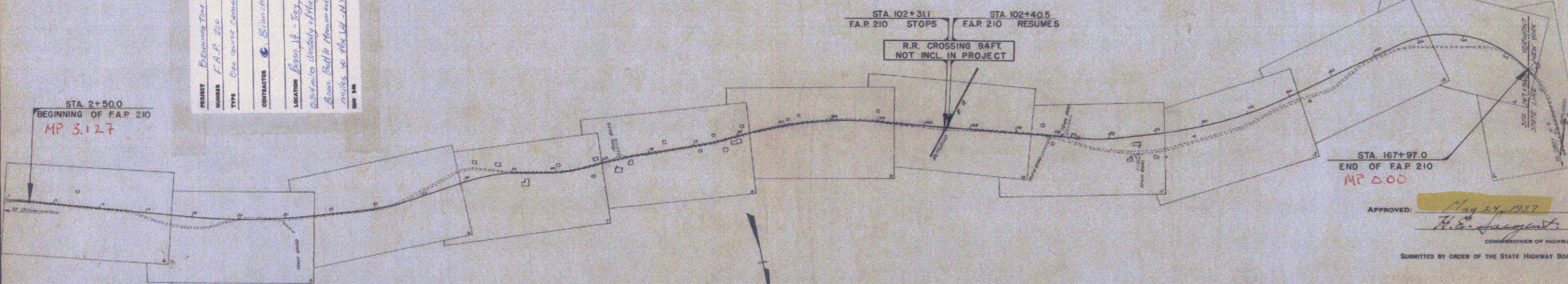
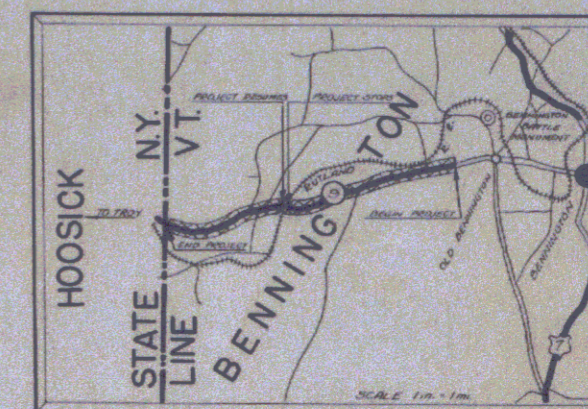
FEDERAL AID PROJECT

**TOWN OF BENNINGTON
BENNINGTON VT.-TROY N.Y. ROAD**

BEGINNING AT A POINT 0.314 MILES WESTERLY OF THE JUNCTION OF ROUTE 9 & ROAD TO BENNINGTON BATTLE MONUMENT & EXTENDING WESTERLY 3.122 MILES TO THE VT.-N.Y. STATE LINE.

LENGTH OF PROJECT 16,489.2 FT. = 3.122 MI.

FED. ROAD DIST. NO.	STATE	FED. AID PROJ. NO.	SERIAL SHEET NO.	TOTAL SHEETS
9	VT.	210	1	20



CONVENTIONAL SIGNS

COUNTY LINE	GROUND ELEVATION
TOWN LINE	GRADE ELEVATION
FENCE LINE	
STONE WALL	
UNFENCED PROPERTY	
GUARD RAIL	
TRAVELED WAY	
RAILROAD	
RETAINING WALL	
CENTER LINE	
SURVEY LINE	
CULVERT	
DROP INLET	
TROLLEY POLE	
POWER POLE	
TELEPHONE POLE	
TREES	
HEDGE	

CURVE DATA

DEFLECTION ANGLE	D.
DEGREE OF CURVE	D.
RADIUS OF CURVE	R.
TANGENT DISTANCE	T.
LENGTH OF CURVE	L.
EXTERNAL DISTANCE	E.
POINT OF INTERSECTION	P. I.
POINT OF CURVE	P. C.
POINT OF TANGENT	P. T.
POINT ON TANGENT	P. O. T.

SCALES

PLAN	1" = 100 FT.
PROFILE	1" = 20 FT.
CROSS SECTIONS	1" = 5 FT.

THESE PLANS ARE SUBJECT TO SUCH REVISIONS AS MAY BE REQUIRED BY THE BUREAU OF PUBLIC ROADS OR THE COMMISSIONER OF HIGHWAYS. CONSTRUCTION IS TO BE CARRIED ON IN ACCORDANCE WITH THE PLANS AND SPECIFICATIONS AND BRIDGE SPECIFICATIONS OF 1938 AS APPROVED DEC. 23 1936 BY THE BUREAU OF PUBLIC ROADS INCLUDING ALL SUBSEQUENT APPROVED REVISIONS AND SUCH REVISED SPECIFICATIONS AND SPECIAL PROVISIONS AS ARE SUBMITTED WITH THE PLANS.

APPROVED: *May 24 1937*
H. S. August
COMMISSIONER OF HIGHWAYS

Pin # 992804
Route VT 9

RECOMMENDED _____
DISTRICT ENGINEER BUREAU OF PUBLIC ROADS

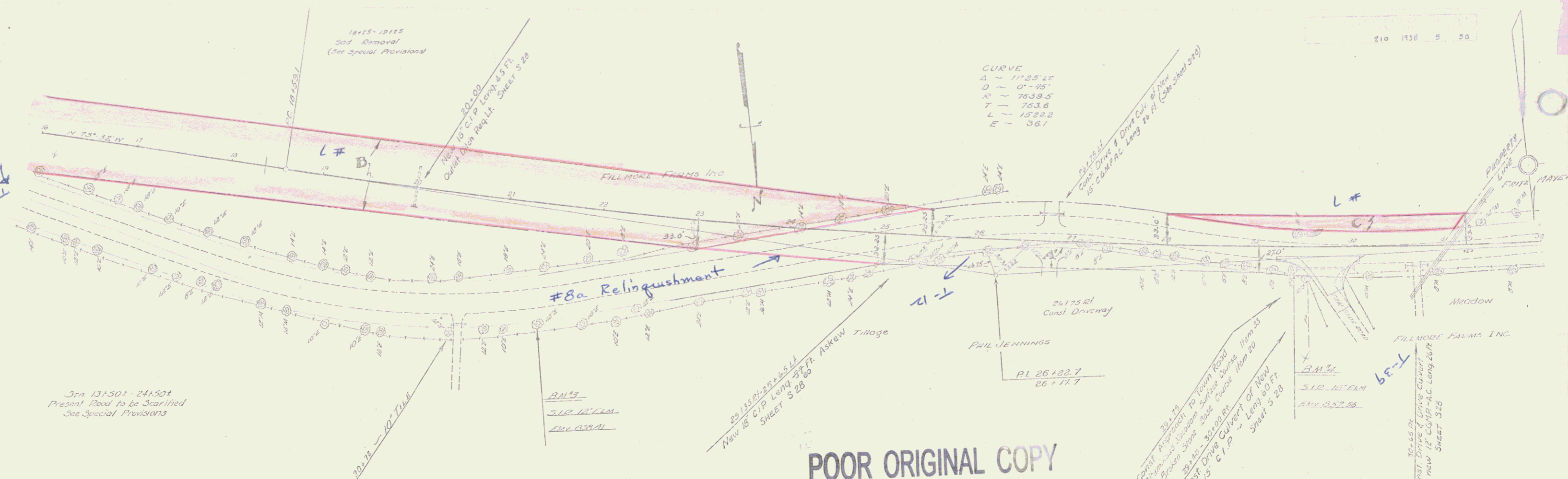
RECOMMENDED FOR APPROVAL _____
CHIEF ENGINEER BUREAU OF PUBLIC ROADS

APPROVED _____
DIRECTOR, BUREAU OF PUBLIC ROADS

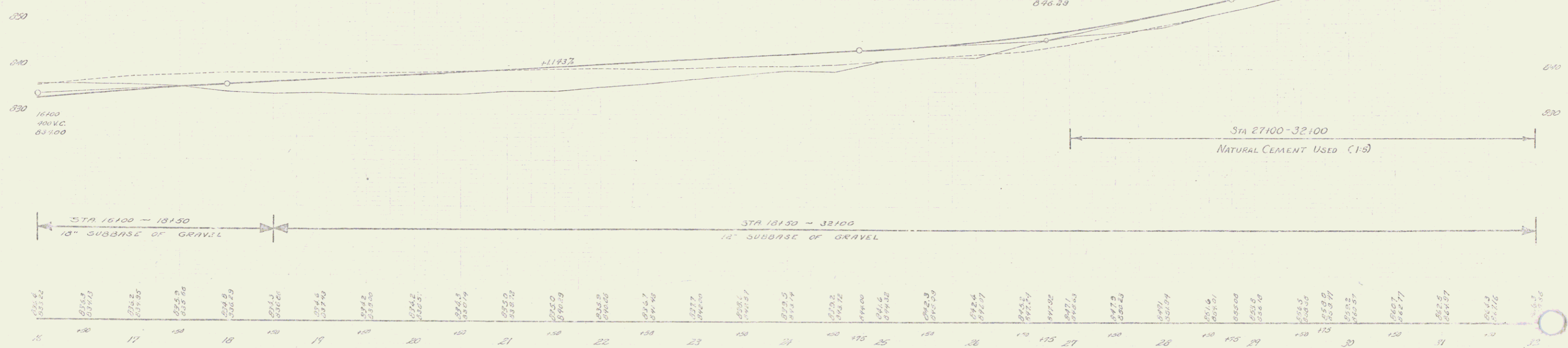
APPROVED: *May 24 1937*
G. C. V. Martin
DISTRICT HIGHWAY COMMISSIONER

APPROVED: *May 24 1937*
C. J. Marshall
ROAD ENGINEER

SERIES F.A.P. NO. 210 FILED
SHEET 1 OF 20

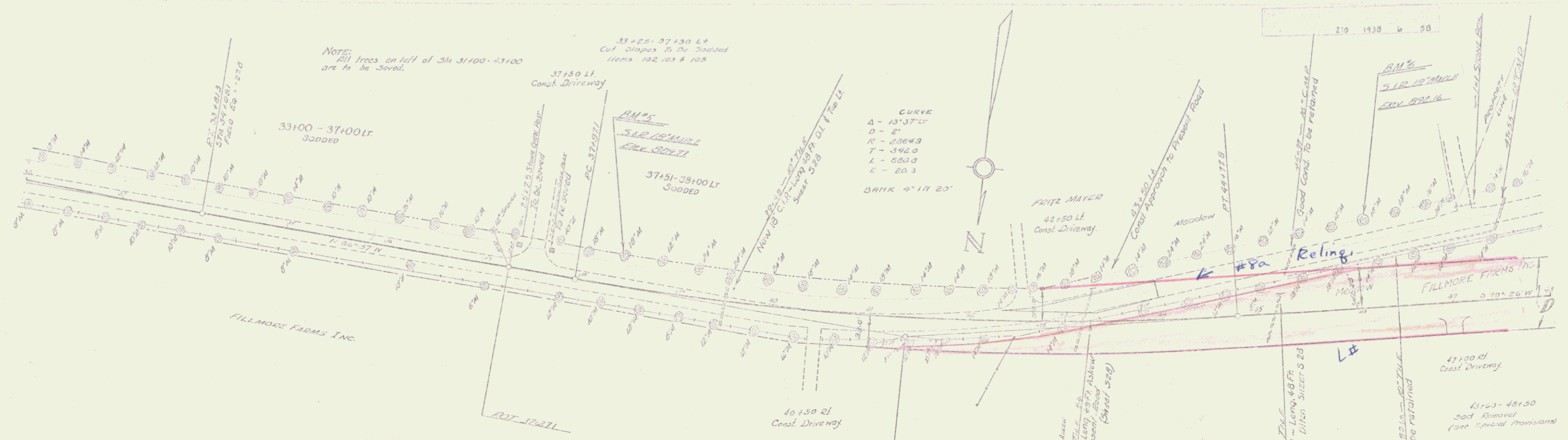


STATION	PARCEL	INSTRUMENT	DATE	GRANTOR	GRANTEE	RECORDED	REMARKS
						BOOK PAGE DATE	CUL. STA.
560	ADLOFSKI	a.c.d.	6-28-37	FILLMORE FARMS INC.	ST OF Vt	1 468 6-29-37	7+78, 13+23, 20+00, 25+00, 45+10, 50+50, 50+57, 61+00, 71+03, 77+10
	A'	a.c.d.	6-23-37	PHILLIP D. JENNINGS	"	1 465 6-24-37	



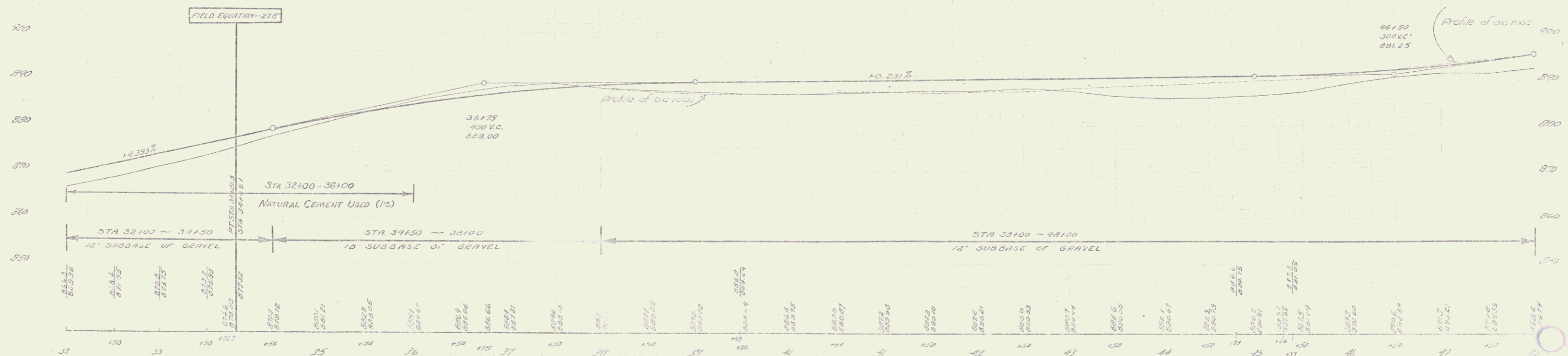
BM 3 SPIKE IN ROOT 18" ELM 103' BY STA 21+95 Elev 830.41
 BM 4 SPIKE IN ROOT 18" ELM 26" 20' STA 24+90 Elev 857.38

SERIES CAP NO 210
 SHEET 5 OF 50



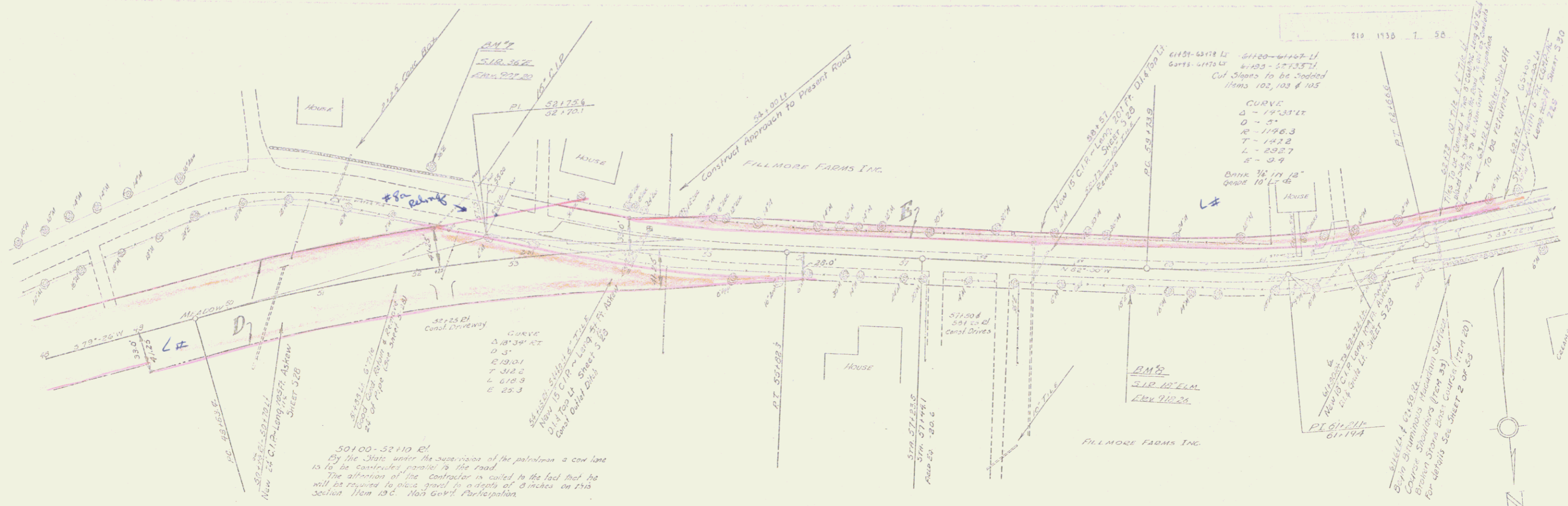
POOR ORIGINAL COPY

PARCEL INSTRUMENT	DATE	GRANTOR	GRANTEE	RECORDED	REMARKS
ACCORDASHI 6-CO	6-28-37	FILLMORE FARMS INC	STOFFER	BOOK PAGE DATE	CUR. 578
		FERRINGHAM, MAYER		1 608 7/25, 7/18	

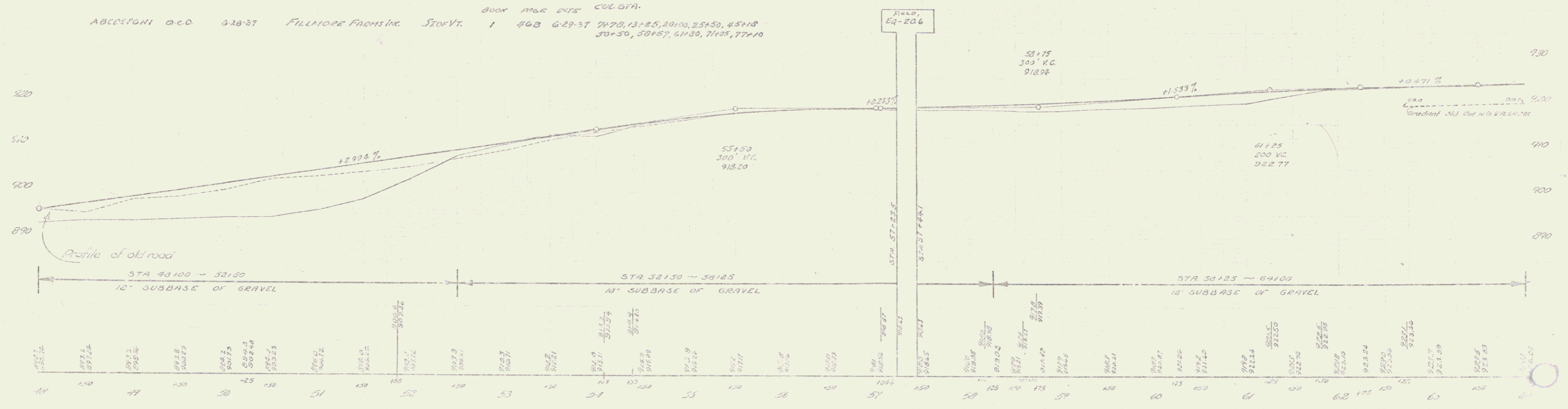


EM'S SPIKE IN ROOT 10" MAPLE 31' L. STA 38+42. ELEV. 889.77
 SM'S SPIKE IN ROOT 10" MAPLE 90' L. STA 40+10. ELEV. 892.16

SHEET 6 OF 22

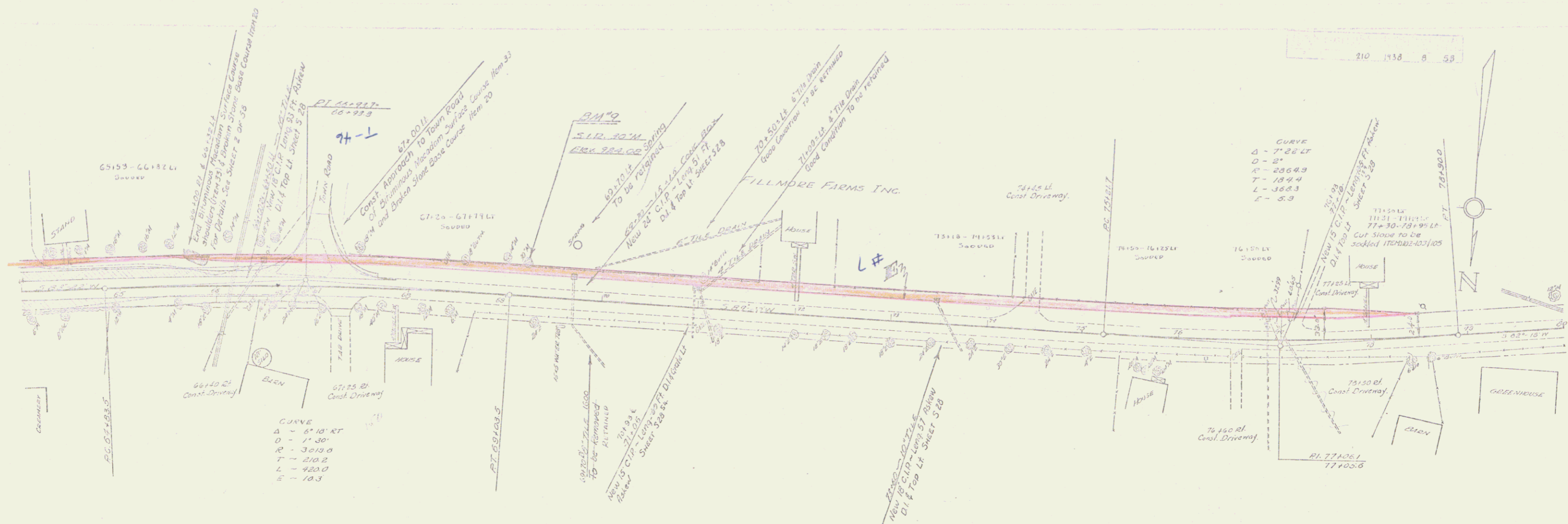


PARCEL INSTRUMENT	DATE	GRANTOR	GRANTEE	RECORDED	BOOK	PAGE	DATE	COL. STA.
ABCDEFHI	6-28-87	FILLMORE FARMS INC.	STATE	1	408	629-37	1978, 13-25, 2010, 251459, 45118	301-30, 501-57, 611-80, 711-95, 771-10

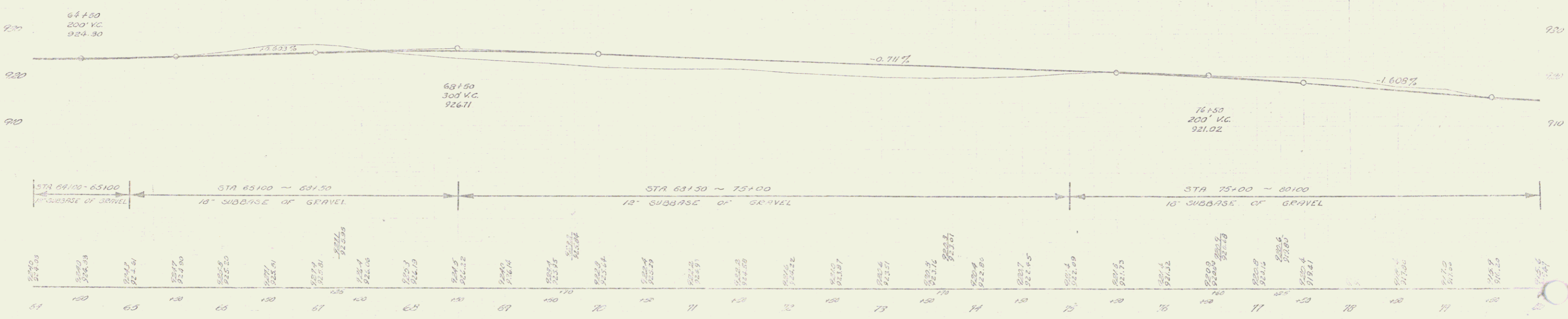


BM 7 SPIKE IN ROOT 36' ELM 15411 STA 52+40.56M 907.20
 BM 8 SPIKE IN ROOT 19' ELM 22514 STA 57+11.15M 918.26

SHEET 7 OF 58

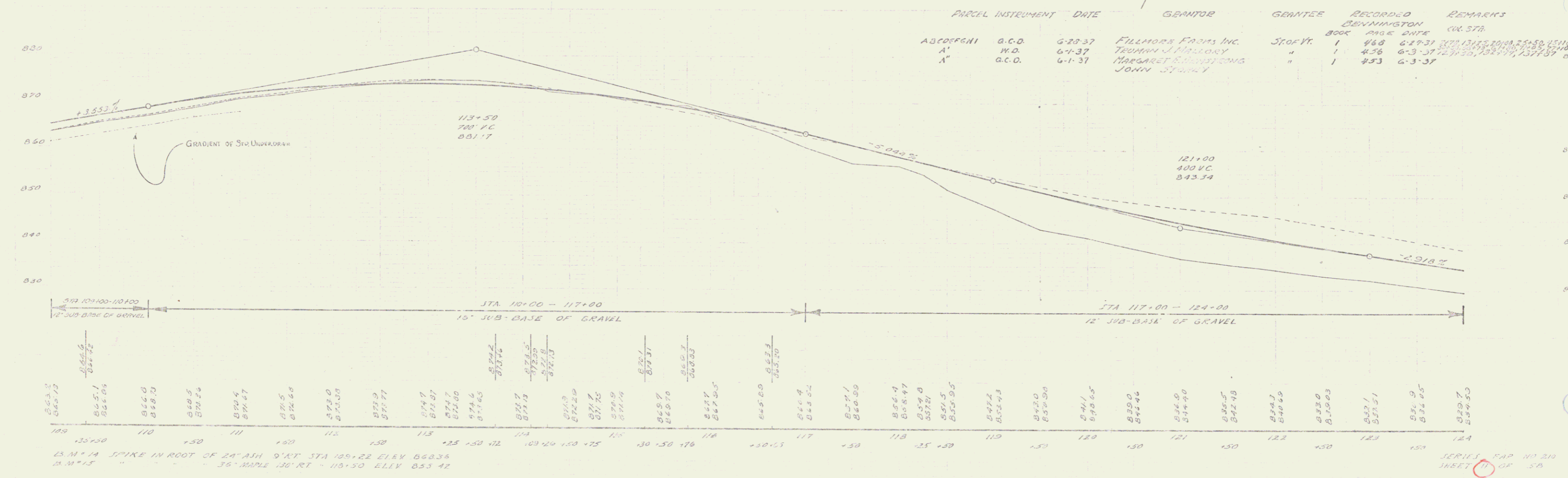
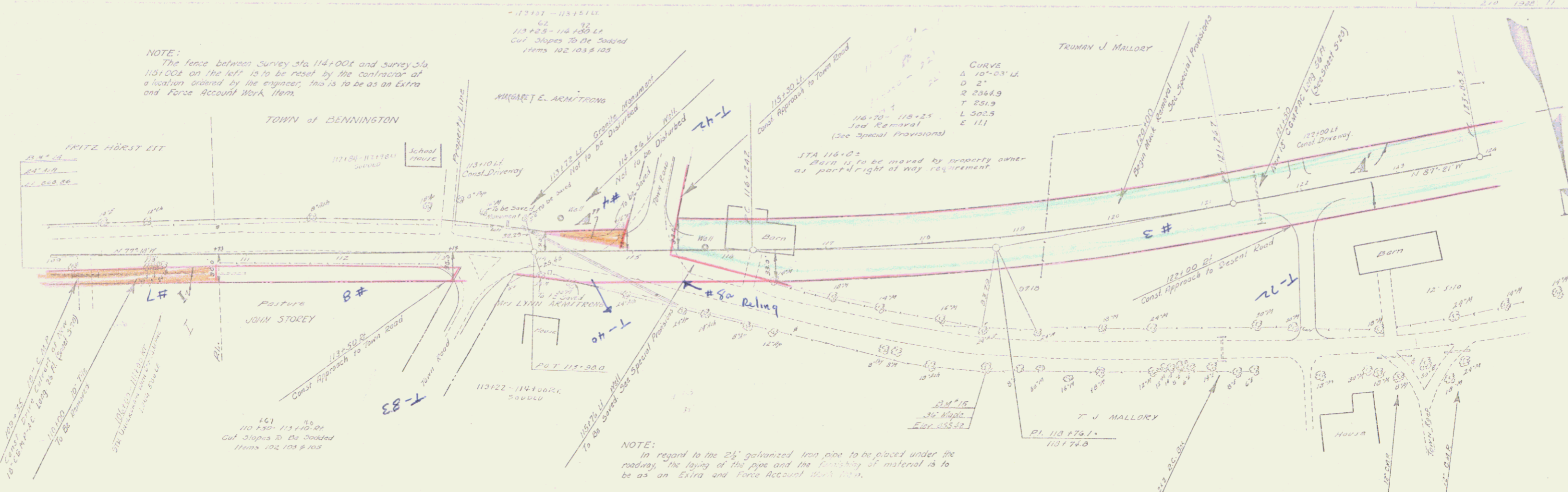


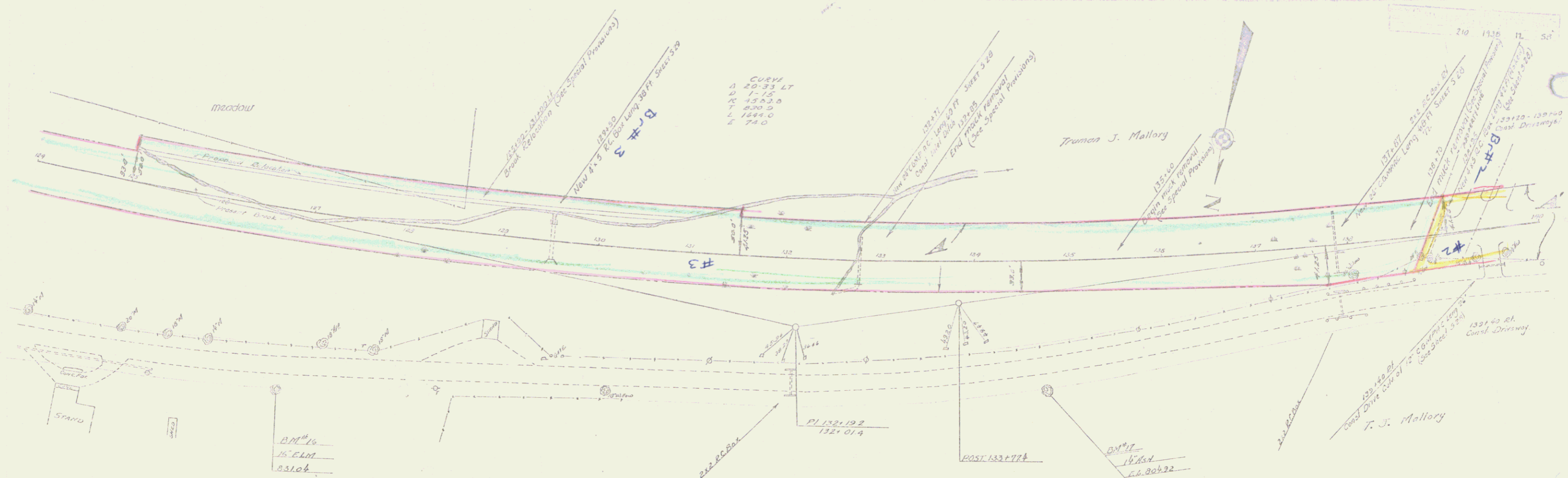
PARCEL INSTRUMENT	DATE	GRANTOR	GRANTEE	RECORDED	REMARKS
ABCD EFGH	8-20-37	FILLMORE FARMS INC.	STORV.	DEANWILSON BOOK PAGE DATE	CUL-57R 6-29-37 7178, 13425, 2046, 25450, 43410, 50450, 55457, 61400, 11435, 77410



EM 79 SP. 1/2 IN. 100 FT. 30" MAPLE 33' 1/2" ST. 69' 1/2" DIA. 924.00

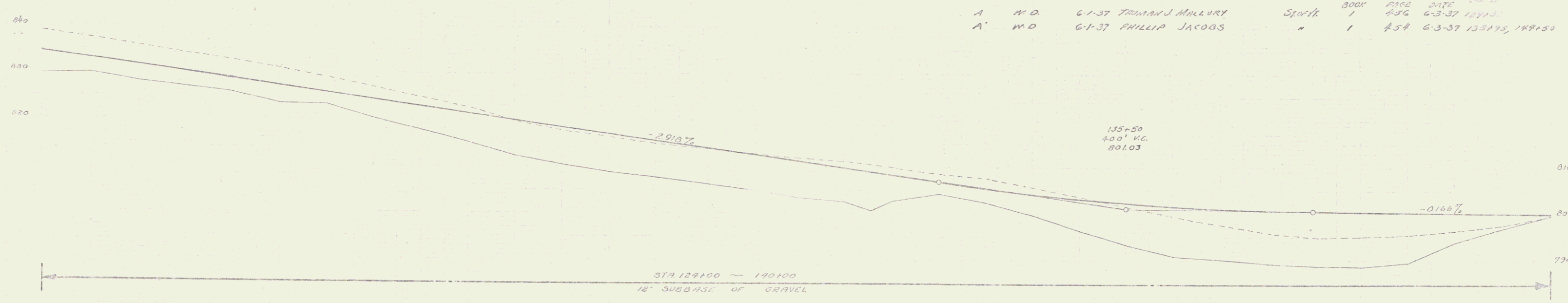
SERIES MAP NO. 210
SHEET 10 OF 51





CURV
 20.33 LT
 7.15
 13.53 D
 8.20 D
 1.684.0
 74.0

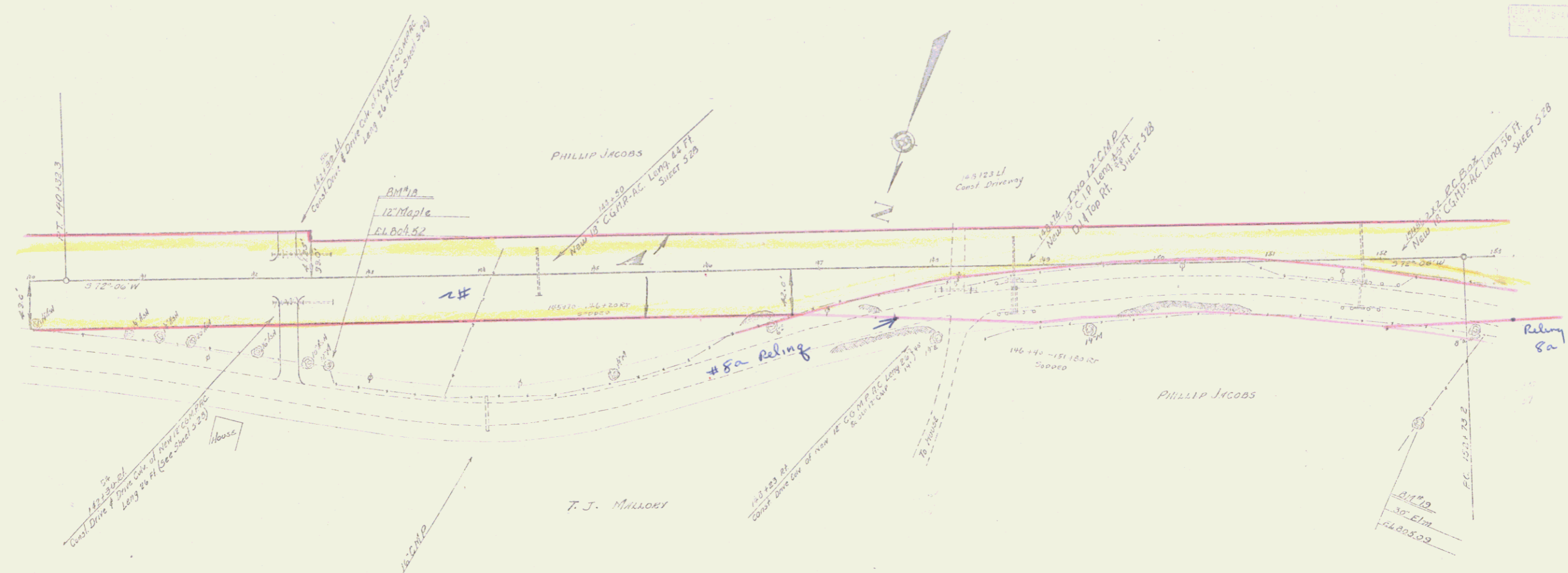
PARCEL	INSTRUMENT	DATE	GRANTOR	GRANTEE	RECORDED	EDWARDS
A	W.D.	6-1-37	TRUMAN J. MALLORY	Spofford	300K	1752 DATE 6-1-37
A'	W.D.	6-1-37	PHILLIP JACOBS	"	454	6-3-37 12943
					1	454 6-3-37 135175, 149450



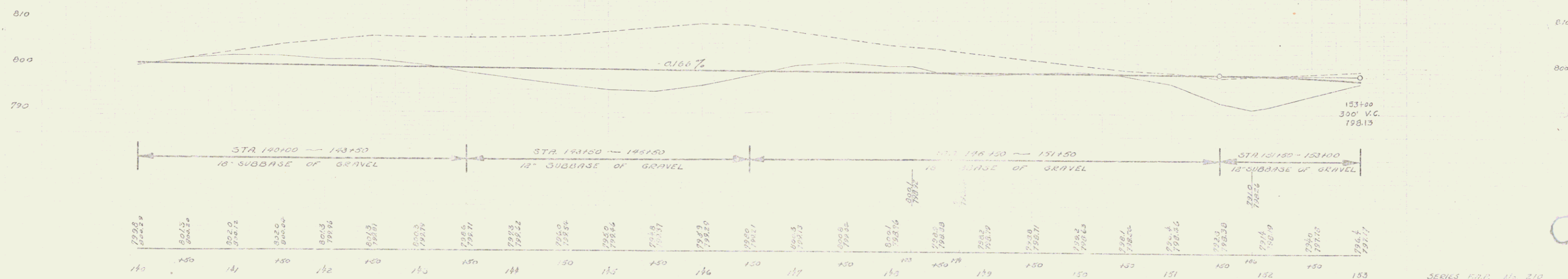
STATION	ELEVATION
129+00	822.6
129+05	821.75
129+10	821.47
129+15	820.21
129+20	820.21
129+25	820.21
129+30	820.21
129+35	820.21
129+40	820.21
129+45	820.21
129+50	820.21
129+55	820.21
130+00	820.21
130+05	820.21
130+10	820.21
130+15	820.21
130+20	820.21
130+25	820.21
130+30	820.21
130+35	820.21
130+40	820.21
130+45	820.21
130+50	820.21
130+55	820.21
131+00	820.21
131+05	820.21
131+10	820.21
131+15	820.21
131+20	820.21
131+25	820.21
131+30	820.21
131+35	820.21
131+40	820.21
131+45	820.21
131+50	820.21
131+55	820.21
132+00	820.21
132+05	820.21
132+10	820.21
132+15	820.21
132+20	820.21
132+25	820.21
132+30	820.21
132+35	820.21
132+40	820.21
132+45	820.21
132+50	820.21
132+55	820.21
133+00	820.21
133+05	820.21
133+10	820.21
133+15	820.21
133+20	820.21
133+25	820.21
133+30	820.21
133+35	820.21
133+40	820.21
133+45	820.21
133+50	820.21
133+55	820.21
134+00	820.21
134+05	820.21
134+10	820.21
134+15	820.21
134+20	820.21
134+25	820.21
134+30	820.21
134+35	820.21
134+40	820.21
134+45	820.21
134+50	820.21
134+55	820.21
135+00	820.21
135+05	820.21
135+10	820.21
135+15	820.21
135+20	820.21
135+25	820.21
135+30	820.21
135+35	820.21
135+40	820.21
135+45	820.21
135+50	820.21
135+55	820.21
136+00	820.21
136+05	820.21
136+10	820.21
136+15	820.21
136+20	820.21
136+25	820.21
136+30	820.21
136+35	820.21
136+40	820.21
136+45	820.21
136+50	820.21
136+55	820.21
137+00	820.21
137+05	820.21
137+10	820.21
137+15	820.21
137+20	820.21
137+25	820.21
137+30	820.21
137+35	820.21
137+40	820.21
137+45	820.21
137+50	820.21
137+55	820.21
138+00	820.21
138+05	820.21
138+10	820.21
138+15	820.21
138+20	820.21
138+25	820.21
138+30	820.21
138+35	820.21
138+40	820.21
138+45	820.21
138+50	820.21
138+55	820.21
139+00	820.21
139+05	820.21
139+10	820.21
139+15	820.21
139+20	820.21
139+25	820.21
139+30	820.21
139+35	820.21
139+40	820.21
139+45	820.21
139+50	820.21
139+55	820.21
140+00	820.21

B.M. #6 Spike in post 16' El. 821.06 Sta. 127+06 El. 821.06
 B.M. #7 Spike in post 14' El. 135' B.M. 134+16 El. 821.06

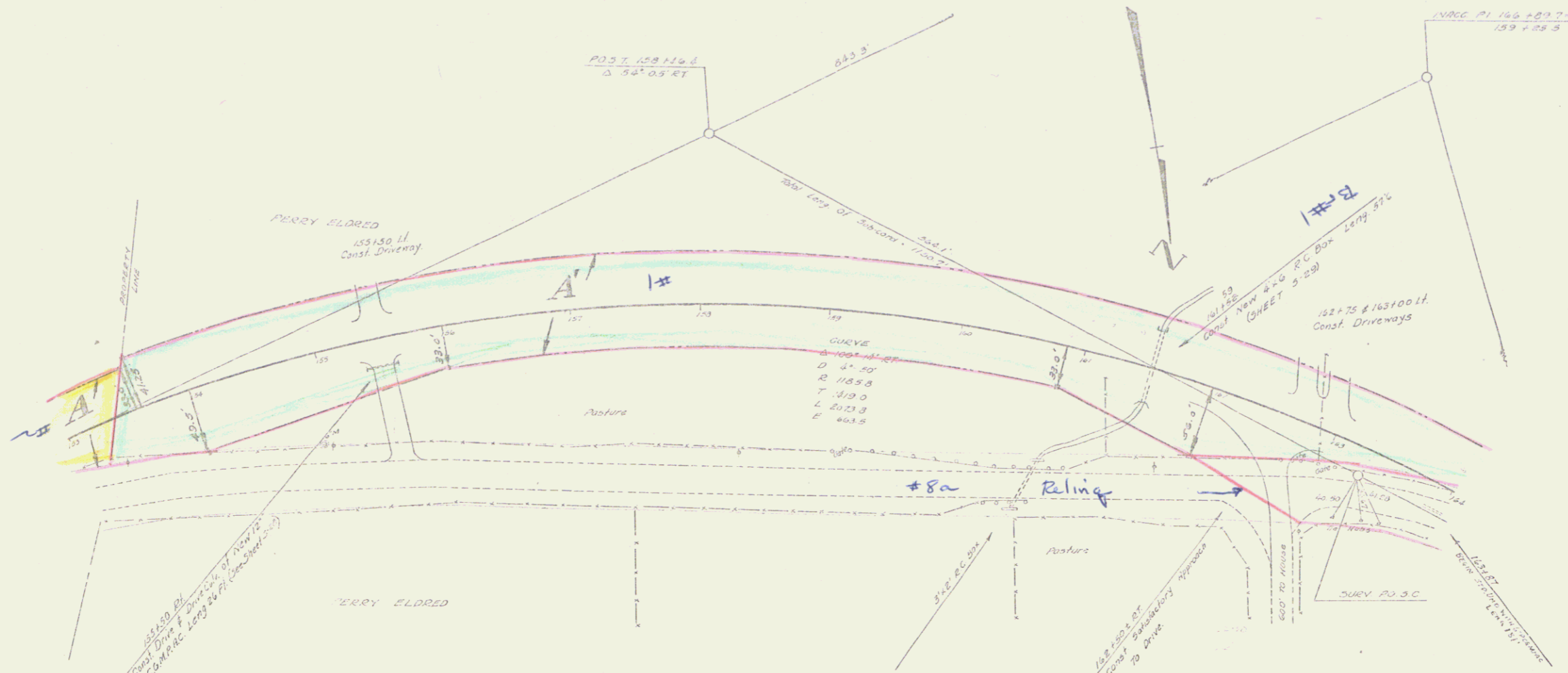
SERIES 14 A.P. 210
 SHEET 10 OF 24



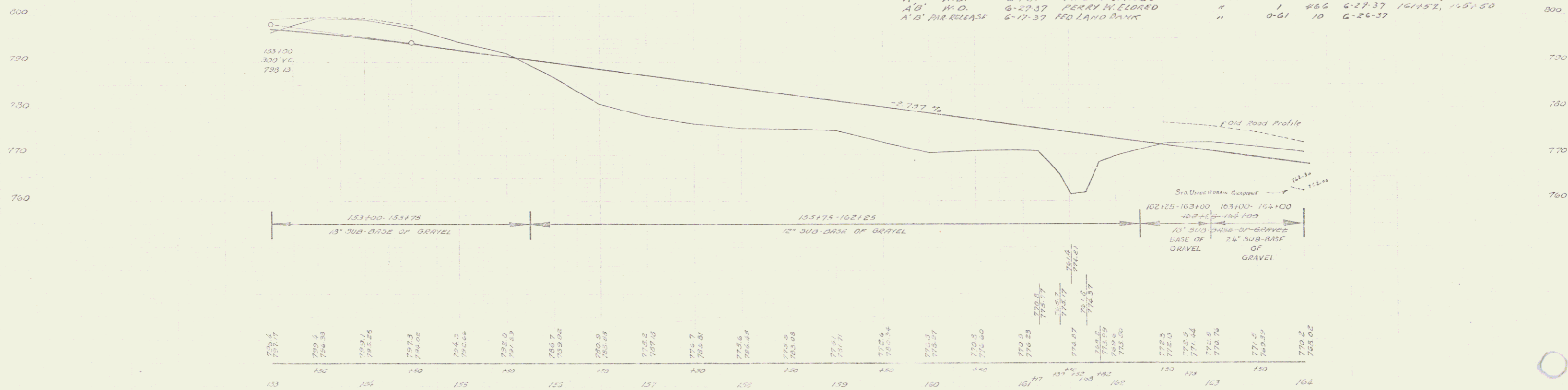
PARCEL INSTRUMENT	DATE	CONTR	GRANTEE	RECORDED	REMARKS
A	N.D.	6737	PHILLIP JACOBS	30071	BOOK PAGE DATE 1 108 5-3-37 130713, 1474-50



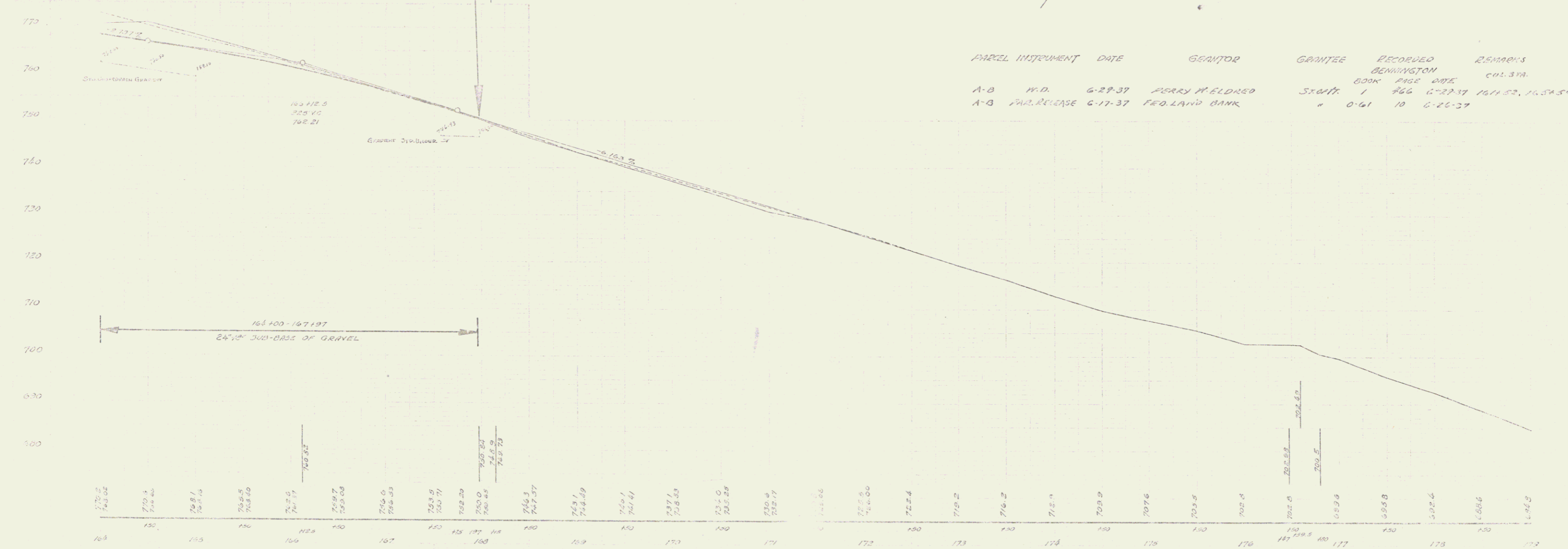
BM 19 Spire in root 12 Maple 79' 11" Sta 142+00 Elev 801.32
 BM 19 " " " 30' Elm NW of " 152+25 " 805.09



PARCEL	INSTRUMENT	DATE	GRANTOR	GRANTEE	RECORDED	REMARKS
A	W.D.	6-1-37	PHILIP JACOBS	STARYT	BOOK PAGE DATE	CU. STA.
A'B'	W.D.	6-27-37	PERRY W. ELDERED	"	458 6-3-37	138A.25, 144.50
A'B'	PAR. RELEASE	6-17-37	FED. LAND BANK	"	486 6-27-37	141.52, 145.50
					0-61 10 6-26-37	



Station	Elevation	Station	Elevation	Station	Elevation	Station	Elevation
133	784.6	140	790.4	147	770.9	154	771.5
134	789.7	141	794.30	148	774.25	155	774.25
135	793.1	142	798.25	149	778.0	156	778.0
136	797.3	143	802.0	150	781.8	157	781.8
137	801.0	144	805.5	151	785.7	158	785.7
138	804.5	145	809.0	152	789.6	159	789.6
139	808.0	146	812.5	153	793.5	160	793.5
140	811.5	147	816.0	154	797.4	161	797.4
141	815.0	148	819.5	155	801.3	162	801.3
142	818.5	149	823.0	156	805.2	163	805.2
143	822.0	150	826.5	157	809.1	164	809.1
144	825.5	151	830.0	158	813.0	165	813.0
145	829.0	152	833.5	159	816.9	166	816.9
146	832.5	153	837.0	160	820.8	167	820.8
147	836.0	154	840.5	161	824.7	168	824.7
148	839.5	155	844.0	162	828.6	169	828.6
149	843.0	156	847.5	163	832.5	170	832.5
150	846.5	157	851.0	164	836.4	171	836.4
151	850.0	158	854.5	165	840.3	172	840.3
152	853.5	159	858.0	166	844.2	173	844.2
153	857.0	160	861.5	167	848.1	174	848.1
154	860.5	161	865.0	168	852.0	175	852.0
155	864.0	162	868.5	169	855.9	176	855.9
156	867.5	163	872.0	170	859.8	177	859.8
157	871.0	164	875.5	171	863.7	178	863.7
158	874.5	165	879.0	172	867.6	179	867.6
159	878.0	166	882.5	173	871.5	180	871.5
160	881.5	167	886.0	174	875.4	181	875.4
161	885.0	168	889.5	175	879.3	182	879.3
162	888.5	169	893.0	176	883.2	183	883.2
163	892.0	170	896.5	177	887.1	184	887.1
164	895.5	171	900.0	178	891.0	185	891.0
165	899.0	172	903.5	179	894.9	186	894.9
166	902.5	173	907.0	180	898.8	187	898.8
167	906.0	174	910.5	181	902.7	188	902.7
168	909.5	175	914.0	182	906.6	189	906.6
169	913.0	176	917.5	183	910.5	190	910.5
170	916.5	177	921.0	184	914.4	191	914.4
171	920.0	178	924.5	185	918.3	192	918.3
172	923.5	179	928.0	186	922.2	193	922.2
173	927.0	180	931.5	187	926.1	194	926.1
174	930.5	181	935.0	188	930.0	195	930.0
175	934.0	182	938.5	189	933.9	196	933.9
176	937.5	183	942.0	190	937.8	197	937.8
177	941.0	184	945.5	191	941.7	198	941.7
178	944.5	185	949.0	192	945.6	199	945.6
179	948.0	186	952.5	193	949.5	200	949.5
180	951.5	187	956.0	194	953.4	201	953.4
181	955.0	188	959.5	195	957.3	202	957.3
182	958.5	189	963.0	196	961.2	203	961.2
183	962.0	190	966.5	197	965.1	204	965.1
184	965.5	191	970.0	198	969.0	205	969.0
185	969.0	192	973.5	199	972.9	206	972.9
186	972.5	193	977.0	200	976.8	207	976.8
187	976.0	194	980.5	201	980.7	208	980.7
188	979.5	195	984.0	202	984.6	209	984.6
189	983.0	196	987.5	203	988.5	210	988.5
190	986.5	197	991.0	204	992.4	211	992.4
191	990.0	198	994.5	205	996.3	212	996.3
192	993.5	199	998.0	206	1000.2	213	1000.2
193	997.0	200	1001.5	207	1004.1	214	1004.1
194	1000.5	201	1005.0	208	1008.0	215	1008.0
195	1004.0	202	1008.5	209	1011.9	216	1011.9
196	1007.5	203	1012.0	210	1015.8	217	1015.8
197	1011.0	204	1015.5	211	1019.7	218	1019.7
198	1014.5	205	1019.0	212	1023.6	219	1023.6
199	1018.0	206	1022.5	213	1027.5	220	1027.5
200	1021.5	207	1026.0	214	1031.4	221	1031.4
201	1025.0	208	1029.5	215	1035.3	222	1035.3
202	1028.5	209	1033.0	216	1039.2	223	1039.2
203	1032.0	210	1036.5	217	1043.1	224	1043.1
204	1035.5	211	1040.0	218	1047.0	225	1047.0
205	1039.0	212	1043.5	219	1050.9	226	1050.9
206	1042.5	213	1047.0	220	1054.8	227	1054.8
207	1046.0	214	1050.5	221	1058.7	228	1058.7
208	1049.5	215	1054.0	222	1062.6	229	1062.6
209	1053.0	216	1057.5	223	1066.5	230	1066.5
210	1056.5	217	1061.0	224	1070.4	231	1070.4
211	1060.0	218	1064.5	225	1074.3	232	1074.3
212	1063.5	219	1068.0	226	1078.2	233	1078.2
213	1067.0	220	1071.5	227	1082.1	234	1082.1
214	1070.5	221	1075.0	228	1086.0	235	1086.0
215	1074.0	222	1078.5	229	1089.9	236	1089.9
216	1077.5	223	1082.0	230	1093.8	237	1093.8
217	1081.0	224	1085.5	231	1097.7	238	1097.7
218	1084.5	225	1089.0	232	1101.6	239	1101.6
219	1088.0	226	1092.5	233	1105.5	240	1105.5
220	1091.5	227	1096.0	234	1109.4	241	1109.4
221	1095.0	228	1099.5	235	1113.3	242	1113.3
222	1098.5	229	1103.0	236	1117.2	243	1117.2
223	1102.0	230	1106.5	237	1121.1	244	1121.1
224	1105.5	231	1110.0	238	1125.0	245	1125.0
225	1109.0	232	1113.5	239	1128.9	246	1128.9
226	1112.5	233	1117.0	240	1132.8	247	1132.8
227	1116.0	234	1120.5	241	1136.7	248	1136.7
228	1119.5	235	1124.0	242	1140.6	249	1140.6
229	1123.0	236	1127.5	243	1144.5	250	1144.5
230	1126.5	237	1131.0	244	1148.4	251	1148.4
231	1130.0	238	1134.5	245	1152.3	252	1152.3
232	1133.5	239	1138.0	246	1156.2	253	1156.2
233	1137.0	240	1141.5	247	1160.1	254	1160.1
234	1140.5	241	1145.0	248	1164.0	255	1164.0
235	1144.0	242	1148.5	249	1167.9	256	1167.9
236	1147.5	243	1152.0	250	1171.8	257	1171.8
237	1151.0	244	1155.5	251	1175.7	258	1175.7
238	1154.5	245	1159.0	252	1179.6	259	1179.6
239	1158.0	246	1162.5	253	1183.5	260	1183.5
240	1161.5	247	1166.0	254	1187.4	261	1187.4
241	1165.0	248	1169.5	255	1191.3	262	1191.3
242	1168.5	249	1173.0	256	1195.2	263	1195.2
243	1172.0	250	1176.5	257	1199.1	264	1199.1
244	1175.5	251	1180.0	258	1203.0	265	1203.0
245	1179.0	252	1183.5	259	1206.9	266	1206.9
246	1182.5	253	1187.0	260	1210.8	267	1210.8
247	1186.0	254	1190.5	261	1214.7	268	1214.7
248	1189.5	255	1194.0	262	1218.6	269	1218.6
249	1193.0	256	1197.5	263	1222.5	270	1222.5
250	1196.5	257	1201.0	264	1226.4	271	1226.4
251	1200.0	258	1204.5	265	1230.3	272	1230.3
252	1203.5	259	1208.0	266	1234.2	273	1234.2
253	1207.0	260	1211.5	267	1238.1	274	1238.1
254	1210.5	261	1215.0	268	1242.0	275	1242.0
255	1214.0	262	1218.5	269	1245.9	276	1245.9
256	1217.5	263	1222.0	270	1249.8	277	1249.8
257	1221.0	264	1225.5	271	1253.7	278	1253.7
258	1224.5	265	1229.0	272	1257.6	279	1257.6
259	1228.0	266	1232.5	273	1261.5	280	1261.5
260	1231.5	267	1236.0	274	1265.4	281	1265.4
261	1235.0	268	1239.5	275	1269.3	282	1269.3
262	1238.5	269	1243.0	276	1273.2	283	1273.2
263	1242.0	270	1246.5	277	1277.1	284	1277.1
264	1245.5	271	1250.0	278	1281.0	285	1281.0
265	1249.0	272	1253.5	279	1284.9	286	1284.9
266	1252.5	273	1257.0	280	1288.8	287	1288.8
267	1256.0	274	1260.5	281	1292.7	288	1292.7
268	1259.5	275	1264.0	282	1296.6	289	1296.6
269	1263.0	276	1267.5	283	1300.5	290	1300.5
270	1266.5	277	1271.0	284	1304.4	291	1304.4
271	1270.0	278	1274.5	285	1308.3	292	1308.3
272	1273.5	279	1278.0	286	1312.2	293	1312.2
273	1277.0	280	1281.5	287	1316.1	294	1316.1
274	1280.5	281	1285.0	288	1320.0	295	1320.0
275	1284.0	282	1288.5	289	1323.9	296	1323.9
276	1287.5	283	1292.0	290	1327.8	297	1327.8
277	1291.0	284	1295.5	291	1331.7	298	1331.7
278	1294.5	285	1299.0	292	1335.6	299	1335.6
279	1298.0	286	1302.5	293	1339.5	30	

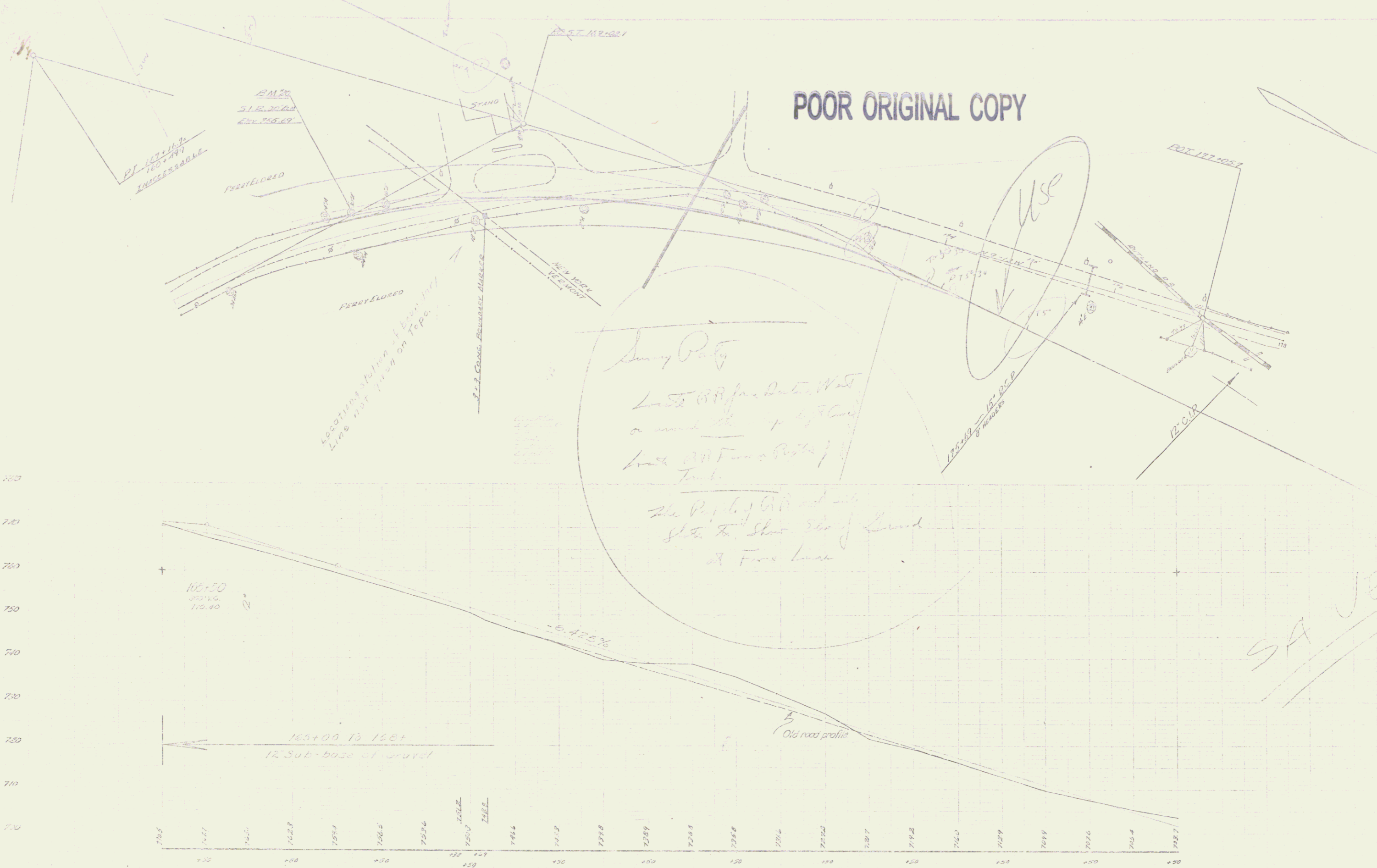


PARCEL	INSTRUMENT	DATE	GRANTOR	GRANTEE	RECORDED	REMARKS
A-B	N.D.	6-29-37	PERRY MELDRED	SWIFT	BOOK PAGE DATE	COL. 37A
A-B	PAR. RELEASE	6-17-37	FEDLAND BANK	"	1 766 6-27-37 167+00 - 167+50	
				"	0-61 10 6-26-37	

B.M. # 20 SPIKE IN DIRT 30' CLM. 12' 11" DIA. 16470 ELEV 755.89

SERIES 100 NO. 11
SHEET 13 OF 11

POOR ORIGINAL COPY



175.00 = 15.00 P.P.

SERIES 119 210-A
SHEET 15A OF

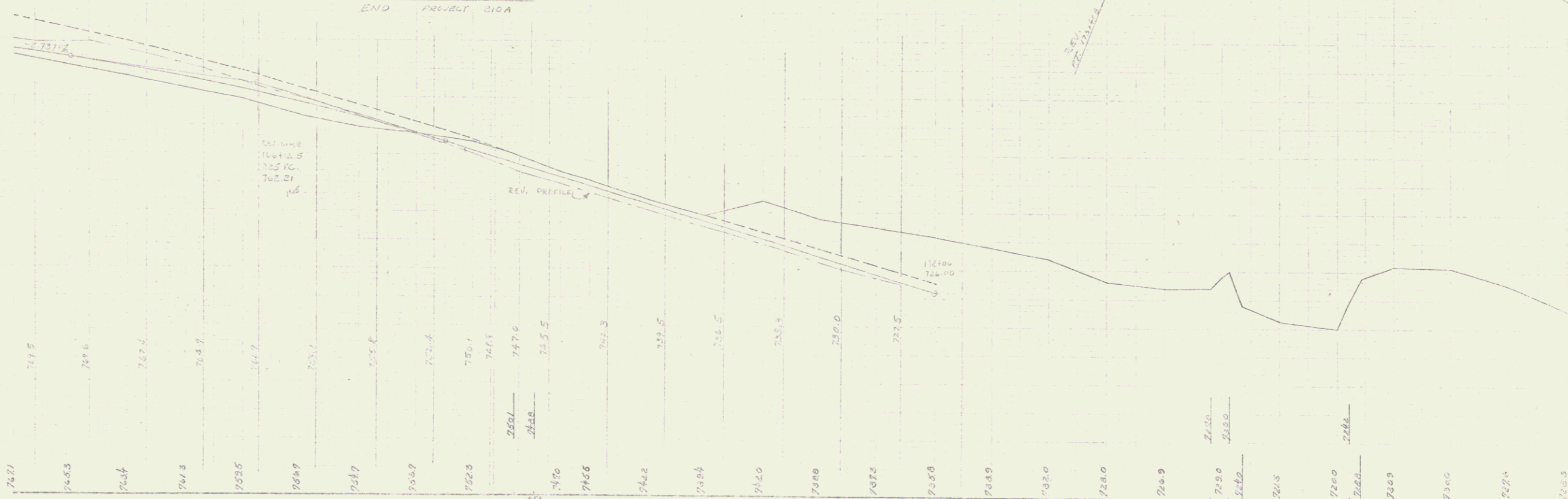
at the ...
Made at ...

14

POOR ORIGINAL COPY



770
760
750
740



END PROJECT DATA

Sheet 15B

15

