

INDEX OF SHEETS

SHEET NO.	1	TITLE PAGE
"	2	TYPICAL CROSS-SECTION OF IMPROVEMENT & SUMMARY OF QUANTITIES
"	3	DETAILS OF FIELD OR QUARRY STONE FIREPLACE
"	4	LAYOUT SHEET

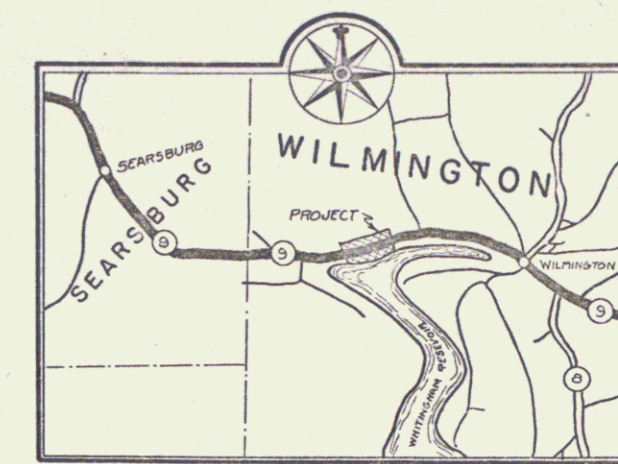
FED. ROAD DIST. NO.	STATE	FED. AID PROJ. NO.	FISCAL YEAR	SHEET NO.	TOTAL SHEETS
9	Vt.	63A	1936	1	4

(LANDSCAPING)

STATE OF VERMONT
 STATE HIGHWAY DEPARTMENT
 PLAN AND PROFILE OF PROPOSED
 STATE HIGHWAY
 FEDERAL AID PROJECT
 ROADSIDE IMPROVEMENT
 PLANTING PLANS

Pin# 99R801

TOWN OF WILMINGTON
 BENNINGTON-BRATTLEBORO ROAD



PROPOSED PLANTING
 TREES
 PINUS RESINOSA 5'-6'
 (Red Pine)



BEGINNING AT STA. 878 + 74 OF F. A. PROJECT 63-A, AND
 EXTENDING EASTERLY TO STA. 904 + 31.9 OF F. A. PROJECT
 63-A.

LENGTH OF PROJECT 23856 FT. = 0.451 MILES

SCALES
 TYPICAL SECTIONS: AS INDICATED
 LAYOUTS 1" = 50'

PROJECT	WILMINGTON
NUMBER	F.A. 63-A
TYPE	Landscaping
CONTRACTOR	
YEAR IN '36	
LOCATION	Bennington-Brattleboro Road, Beginning at Sta. 878+74 of F.A. Project 63-A, and extending easterly to Sta. 904+31.9 of F.A. Project 63-A.

CONVENTIONAL SIGNS

GROUND ELEVATION	DATUM	LINE
GRADE ELEVATION	DATUM	LINE
CURVE DATA		
DEFLECTION ANGLE	Δ	
DEGREE OF CURVE	D	
RADIUS OF CURVE	R	
TANGENT DISTANCE	T	
LENGTH OF CURVE	L	
EXTERNAL DISTANCE	E	
POINT OF INTERSECTION	P. I.	
POINT OF CURVE	P. C.	
POINT OF TANGENT	P. T.	
POINT ON TANGENT	P. O. T.	

=NOTE=
 These plans are subject to such revisions as may be required by the Bureau of Public Roads or the Commissioner of Highways. Construction is to be carried on in accordance with the plans and Standard Road and Bridge Specifications of 1930, including all subsequent approved revisions and such revised specifications and special provisions as are submitted with the plans.

MP 0.969-1.424
 RIGHT-OF-WAY DIVISION
 TOWN FILE
 PERPETUAL
 Town of VT 9
 (To Be Returned To R.O.W. Division)

APPROVED: April 6, 1936
 H. W. [Signature]
 COMMISSIONER OF HIGHWAYS
 SUBMITTED BY ORDER OF THE STATE HIGHWAY BOARD

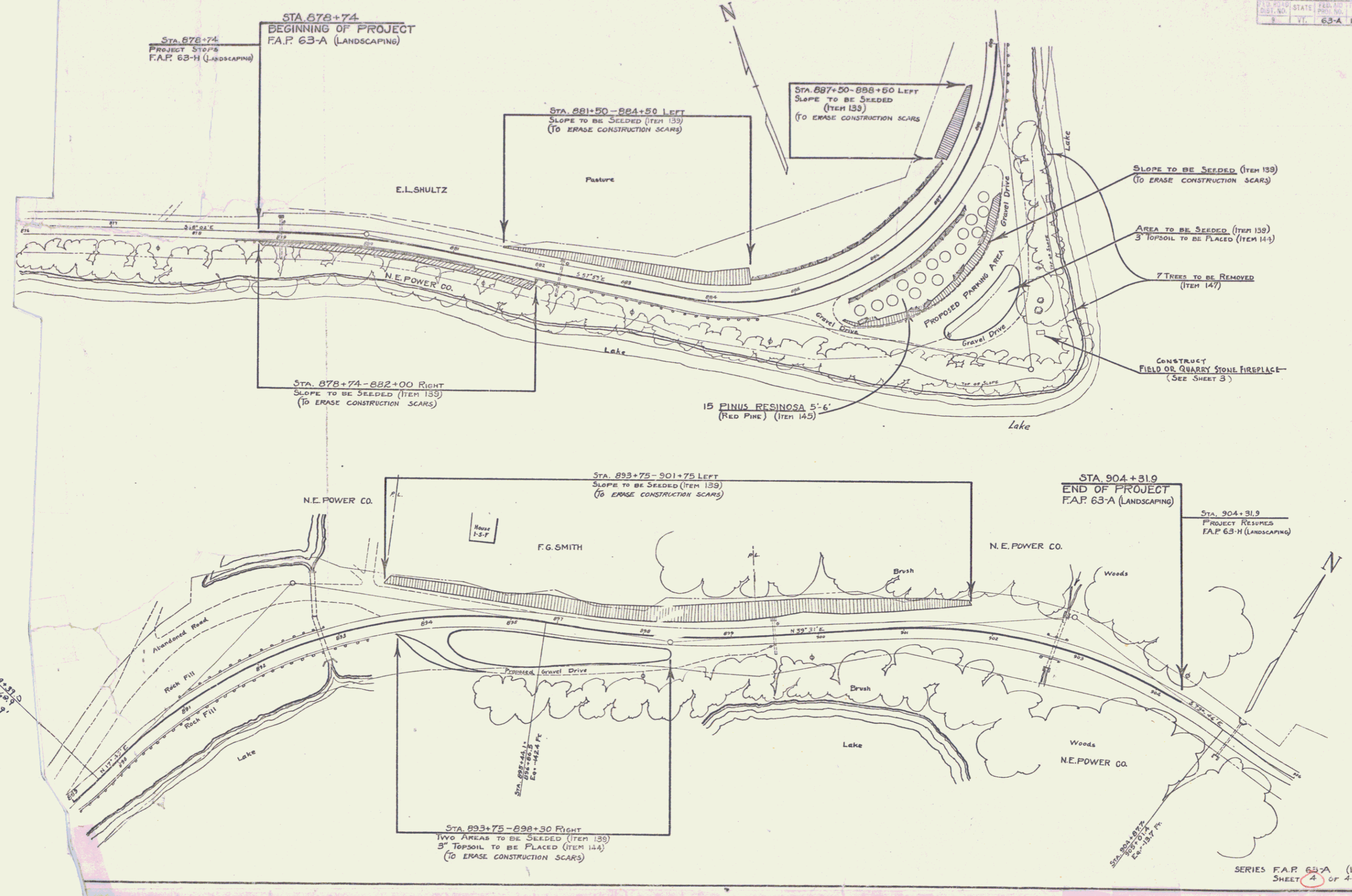
Project No. FAP 63A Landscaping

Route VT 9

RECOMMENDED [Signature]
 DISTRICT ENGINEER BUREAU OF PUBLIC ROADS
 RECOMMENDED FOR APPROVAL [Signature]
 CHIEF ENGINEER BUREAU OF PUBLIC ROADS
 APPROVED [Signature]
 DIRECTOR BUREAU OF PUBLIC ROADS

SERIES FAP No. 63A FILED
 SHEET 1 OF 4

DIST. # 1 PLANS



STA 881+50
881+50
54'-22.9'

STA 898+87.2
898+87.2
Ex. 104.7 Ft.