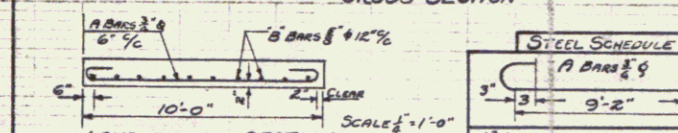
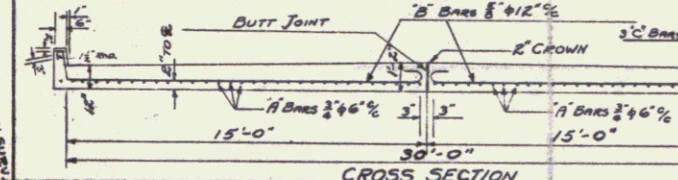


APPROACH SLAB DETAILS



Bar	Size	Required	Length
A	3/8"	12	10'-0"
B	3/8"	60	10'-0"
C	3/8"	12	9'-0"

QUANTITIES (BOTH SIDES)
 CONCRETE: 25 CU. YDS.
 STEEL: 3328 LBS.

FROM 990+50 TO 992+50 THIS WALK SHALL BE RELIED TO FIT FIELD CONDITIONS AS REQUIRED BY THE ENGINEER. WORK ON SIDEWALK TO BE PAID FOR UNDER FORCE ACCOUNT. CONSTRUCT NEW CONCRETE CURBS.

REV. CURVE
 $\Delta = 15^\circ - 12' 18''$
 $D = 5'$
 $R = 1146.88$
 $T = 132.9$
 $L = 304.00$
 $E = 10.16$

THE CONCRETE SURFACE ON THE PRESENT WEST ABUTMENT SHALL BE SURFACED TO CONFORM TO THE NEW WORK. THE COST OF LABOR AND MATERIALS FOR THIS WORK SHALL BE INCLUDED IN THE UNIT PRICE BID FOR CLASS C CONCRETE PER CU. YD.

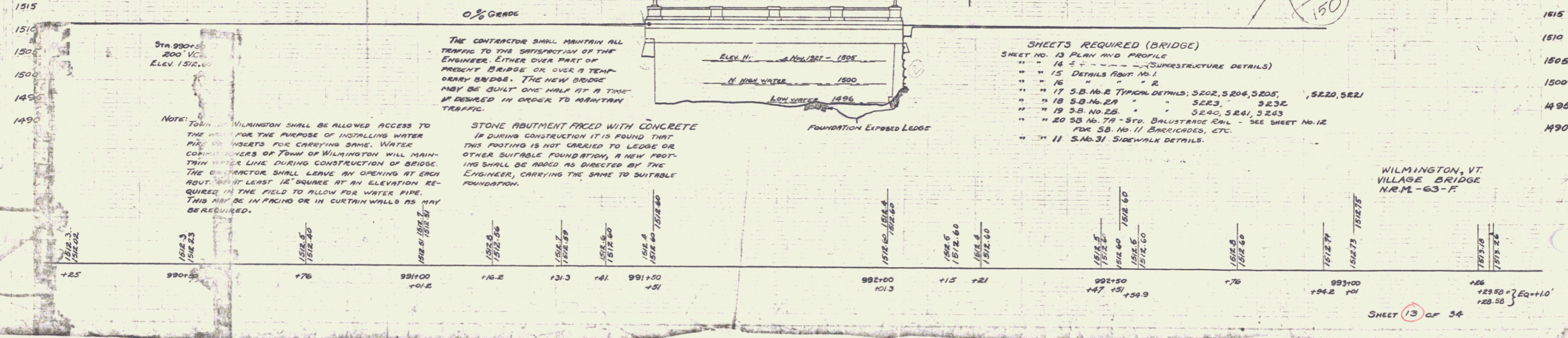
PRESENT STEEL SUPERSTRUCTURE SHALL REMAIN THE PROPERTY OF THE STATE AND SHALL BE DISMANTLED AND DISPOSED OF AS REQUIRED BY THE SPECIFICATIONS.

ESTIMATED QUANTITIES

ITEM	DESCRIPTION	QUANTITY	UNIT
15	STRUCTURE EXCAVATION	104	CU. YDS.
10	ROCK	20	"
34	REINFORCING STEEL	58,017	LBS.
	REMOVAL PRESENT SUPERSTRUCTURE AND MAINTAINING TRAFFIC.		
	LIGHTING SYSTEM, CONDUIT ONLY	1	LAMP SUM.
	BALUSTRADE RAIL	147	LIN. FT.
1411	COMMON EXCAVATION INCL. BORROW	25	CU. YDS.
43	ONE COURSE CEMENT CONCRETE PARK MENT.	25	"
330	CONCRETE CLASS A	180	"
335	" " B	14	"
33C	" " C	75	"

SHEETS REQUIRED (BRIDGE)

SHEET NO.	DESCRIPTION	STATIONING
13	PLAN AND PROFILE	
14	" " (SUPERSTRUCTURE DETAILS)	
15	DETAILS ABUT. NO. 1	
16	" " " 2	
17	S.B. NO. 2 TYPICAL DETAILS	5202, 5204, 5205, 5220, 5221
18	S.B. NO. 2A	5223, 5232
19	S.B. NO. 2B	5240, 5241, 5243
20	S.B. NO. 7A - STD. BALUSTRADE RAIL - SEE SHEET NO. 12 FOR S.B. NO. 11 BRACKLETS, ETC.	
11	S.No. 31 SIDEWALK DETAILS.	



NOTE: TOWN OF WILMINGTON SHALL BE ALLOWED ACCESS TO THE BRIDGE FOR THE PURPOSE OF INSTALLING WATER PIPES OR INSETS FOR CARRYING SAME. WATER COMPANY OFFICERS OF TOWN OF WILMINGTON WILL MAINTAIN WATER LINE DURING CONSTRUCTION OF BRIDGE. THE CONTRACTOR SHALL LEAVE AN OPENING AT EACH ABUTMENT AT LEAST 12" SQUARE AT AN ELEVATION REQUIRED IN THE FIELD TO ALLOW FOR WATER PIPE. THIS MAY BE IN FACING OR IN CURTAIN WALLS AS MAY BE REQUIRED.

THE CONTRACTOR SHALL MAINTAIN ALL TRAFFIC TO THE SATISFACTION OF THE ENGINEER, EITHER OVER PART OF PRESENT BRIDGE OR OVER A TEMPORARY BRIDGE. THE NEW BRIDGE MAY BE BUILT ONE HALF AT A TIME IF DESIRED IN ORDER TO MAINTAIN TRAFFIC.

STONE ABUTMENT FACED WITH CONCRETE IS DURING CONSTRUCTION IT IS FOUND THAT THIS FOOTING IS NOT CRACKED TO LEADS OR OTHER SUITABLE FOUNDATION, A NEW FOOTING SHALL BE ADDED AS DIRECTED BY THE ENGINEER, CARRYING THE SAME TO SUITABLE FOUNDATION.

WILMINGTON, VT. VILLAGE BRIDGE N.E.M. - 63 - F