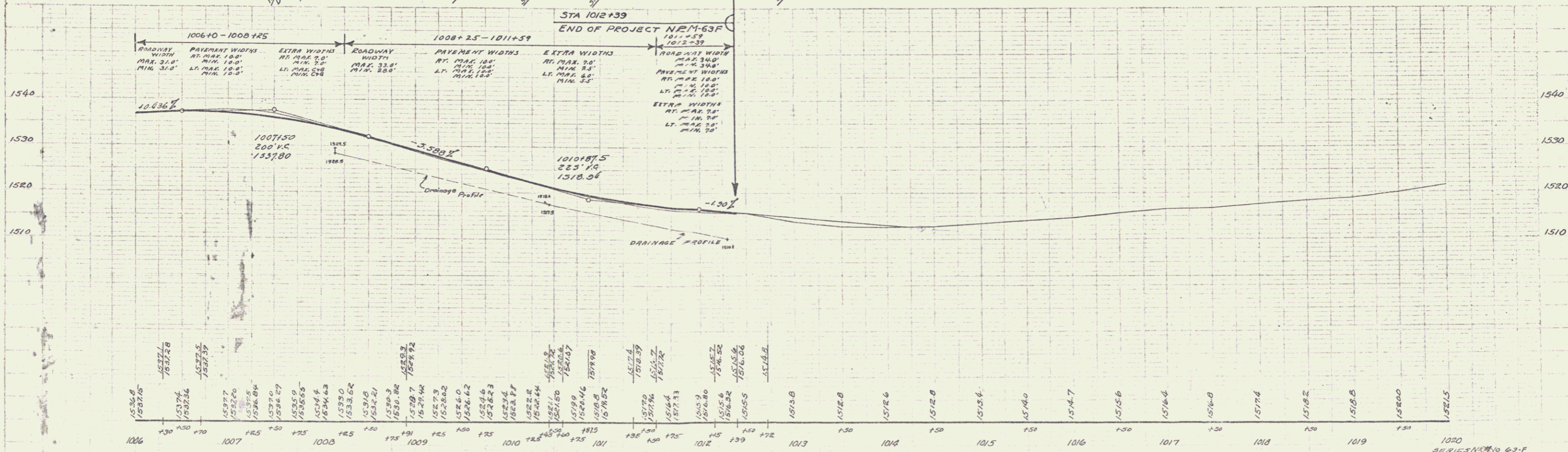
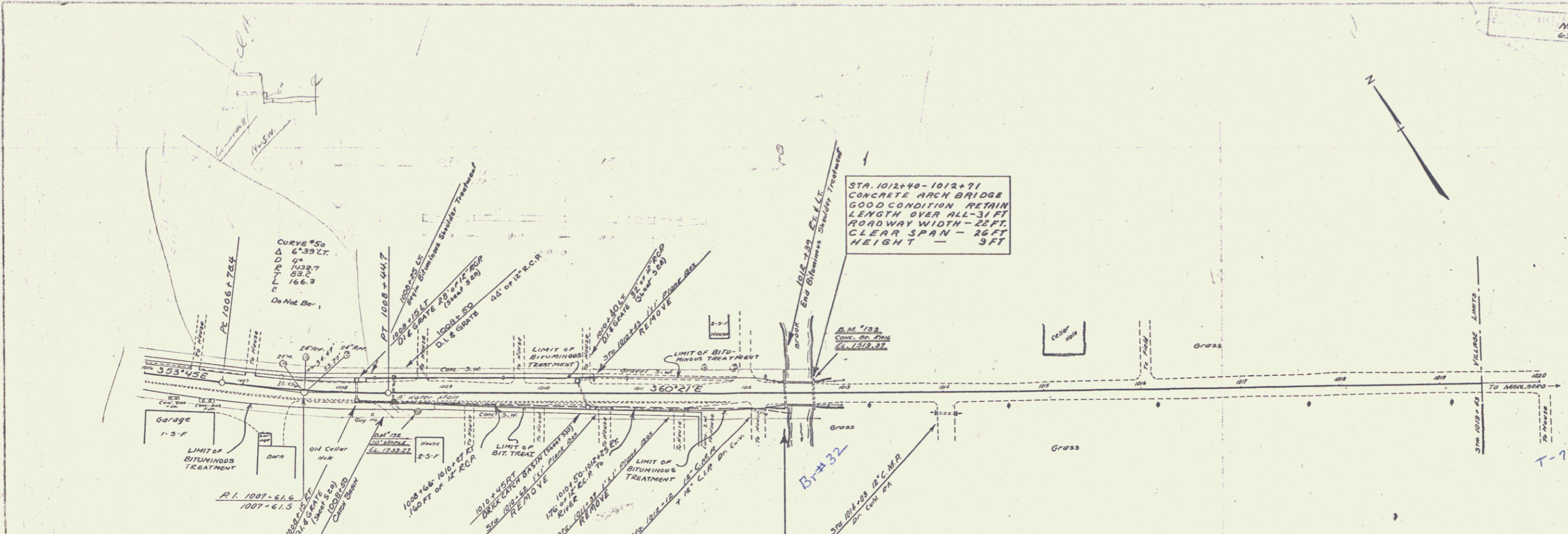


PLAN
DATE
BY
CHECKED
APPROVED



3/4" #132 SPIKE IN FOOT OF 30" MAPLE 16' RT. OF STA. 1008+74 ELEV. 1533.27
 3/4" #132 SPOT ON CONC. BRIDGE RAIL 10 FT. OF STA. 1012+69 ELEV. 1519.37