

INDEX OF SHEETS

1	TITLE PAGE
2	TYPICAL CROSS-SECTION OF IMPROVEMENT (BITUMINOUS MACADAM SURFACE COURSE)
3	BANKING AND WIDENING TABLES
4	PLAN AND PROFILE (ROADWAY)
5	PLAN AND PROFILE (CHANNEL)
6	ABUTMENT DETAILS
7	STANDARD STRUCTURE SHEET
8	SIB 24 SQ. 5FT. SW (1 SPAN - 74 FT. MODIFIED.)
9	SB 7A BALLUSTRADE RAIL
10	SB 11 BARRICADES, LIGHTS & SIGNS
11	SB 20 DETAILS A, G, E, K, L & GENERAL NOTES
12-14	CROSS SECTIONS (ROADWAY)
15	CROSS SECTIONS (CHANNEL)
	S 28 PIPE CULVERTS

STANDARD STRUCTURE SHEETS
APPROVED BY THE CHIEF ENGINEER
S. 28 JULY 11, 1933.

STATE OF VERMONT
STATE HIGHWAY DEPARTMENT

PLAN AND PROFILE OF PROPOSED
STATE HIGHWAY

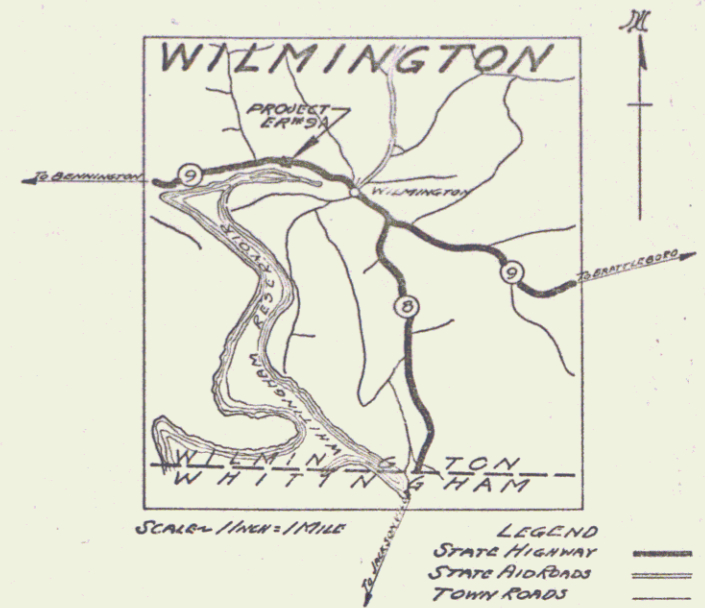
EMERGENCY RELIEF PROJECT

TOWN OF WILMINGTON Pin # 99R798

BENNINGTON-BRATTLEBORO ROAD

BEGINNING AT A POINT 4500 FEET WESTERLY FROM THE
INTERSECTION OF STATE ROUTE NO. 8 AND STATE ROUTE
NO. 9 IN WILMINGTON VILLAGE. THENCE EASTERLY A
DISTANCE OF 450 FEET.

LENGTH OF BRIDGE 74 FEET = 0.014 MILES.
LENGTH OF APPROACH 376 FEET = 0.071 MILES.
LENGTH OF PROJECT 450 FEET = 0.085 MILES.



These plans are subject to such revisions as may be required by the Bureau of Public Roads, or the Commissioner of Highways.
Construction is to be carried on in accordance with the plans and standard Road and Bridge Specifications of 1932 as approved December 29, 1936 by the Bureau of Public Roads including all subsequent approved revisions and such revised specifications and special provisions as are submitted with the plans.

Project Location:
NUMBER 11, 14, 15, 16
TYPE 1 beam - concrete floor
West Bridge
CONTRACTOR Romo Construction Co.
YEAR 1938
LOCATION Bennington-Brattleboro Road
beginning at a point 4500 ft. westerly from the
intersection of State Route No. 8 and State Route
No. 9 in Wilmington village. Thence easterly a distance of

CONVENTIONAL SIGNS

GROUND ELEVATION..... DATUM LINE
GRADE ELEVATION..... DATUM LINE

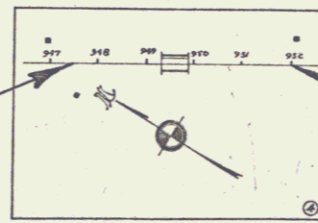
CURVE DATA

DEFLECTION ANGLE..... Δ
DEGREE OF CURVE..... D
RADIUS OF CURVE..... R
TANGENT DISTANCE..... T
LENGTH OF CURVE..... L
EXTERNAL DISTANCE..... E
POINT OF INTERSECTION..... P. I.
POINT OF CURVE..... P. C.
POINT OF TANGENT..... P. T.
POINT ON TANGENT..... P. O. T.

SCALES

TITLE 1" = 200'
TYPICAL SECTION 1" = 2'
PLAN 1" = 20'
PROFILE HORIZONTAL 1" = 20'
VERTICAL 1" = 10'
CROSS SECTIONS 1" = 5'

STA. 947+50
OF F.A.P. 63 H.
BUILT IN 1936.
STA. 947+50
BEGINNING OF PROJECT
NO. E. R. 9A
STA. 952+00
END OF PROJECT
NO. E. R. 9A
STA. 952+00
OF F.A.P. 63 H.
BUILT IN 1936.



RIGHT-OF-WAY DIVISION
TOWN FILE

PERPETUAL

Rte
Town of VT-9
(To Be Returned To R.O.W. Division)

APPROVED: Nov. 28 1938
H. H. August
COMMISSIONER OF HIGHWAYS
SUBMITTED BY ORDER OF THE STATE HIGHWAY BOARD

Route VT-9
Date 11/21/1938

RECOMMENDED
DISTRICT ENGINEER BUREAU OF PUBLIC ROADS
RECOMMENDED FOR APPROVAL
CHIEF ENGINEER BUREAU OF PUBLIC ROADS
APPROVED
DIRECTOR - BUREAU OF PUBLIC ROADS

APPROVED: 11/21/1938
DISTRICT ENGINEER

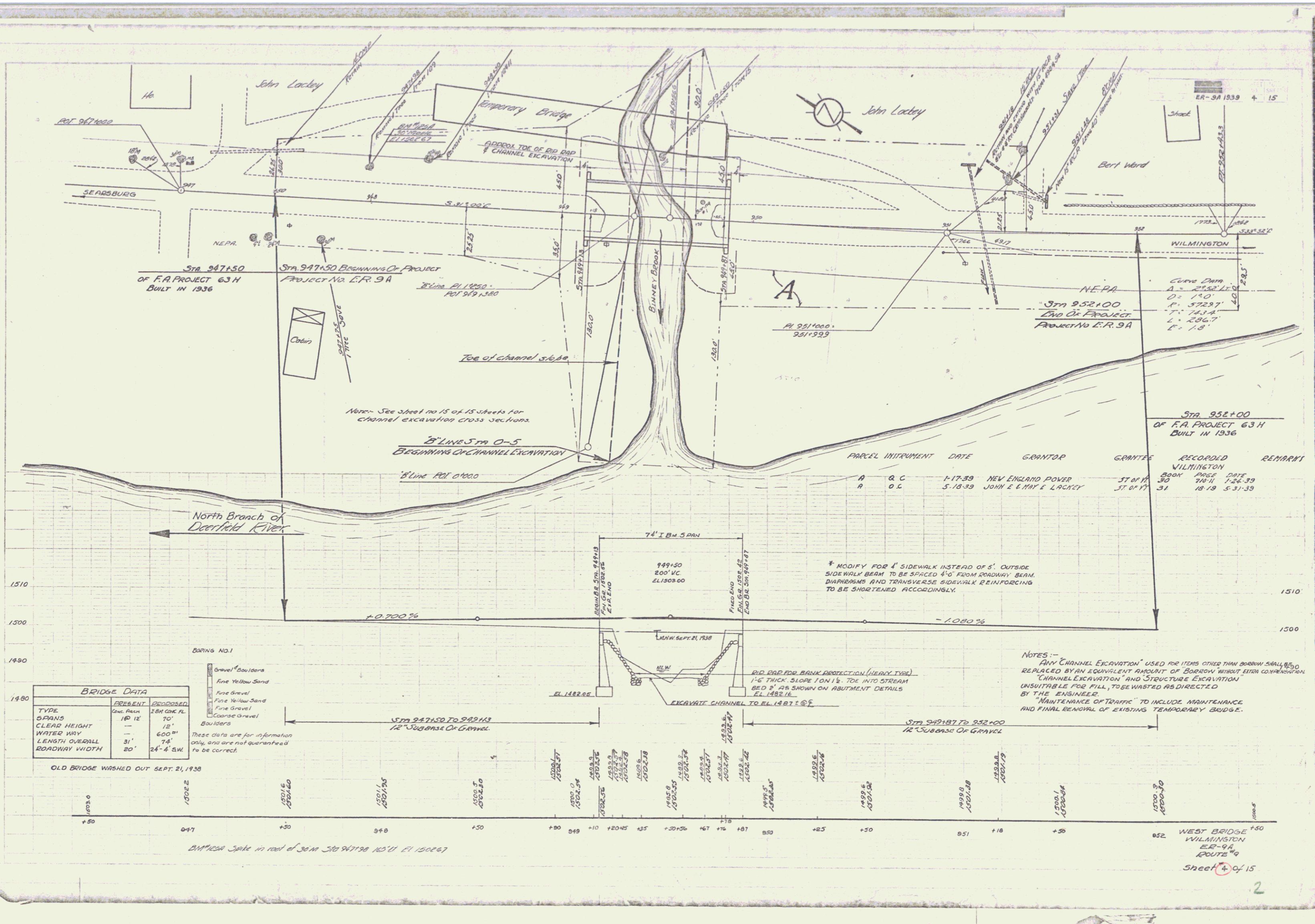
CORRECTED: 11/21/1938
BRIDGE ENGINEER

SERIES ER No. 9A FILED
SHEET 1 OF 15

DIST. #1 PLANS

PLAN
 Date: 10-38
 Project: 10-38
 Author: J. L. LAMM

10-38
 J. CLARKE
 L. LAMM



BRIDGE DATA	
TYPE	PRESENT
SPANS	16' 12"
CLEAR HEIGHT	12'
WATER WAY	600"
LENGTH OVERALL	74'
ROADWAY WIDTH	24'-4" SW.

OLD BRIDGE WASHED OUT SEPT. 21, 1938

- BORING NO. 1
- Gravel & Boulders
 - Fine Yellow Sand
 - Fine Gravel
 - Fine Yellow Sand
 - Fine Gravel
 - Coarse Gravel
 - Boulders

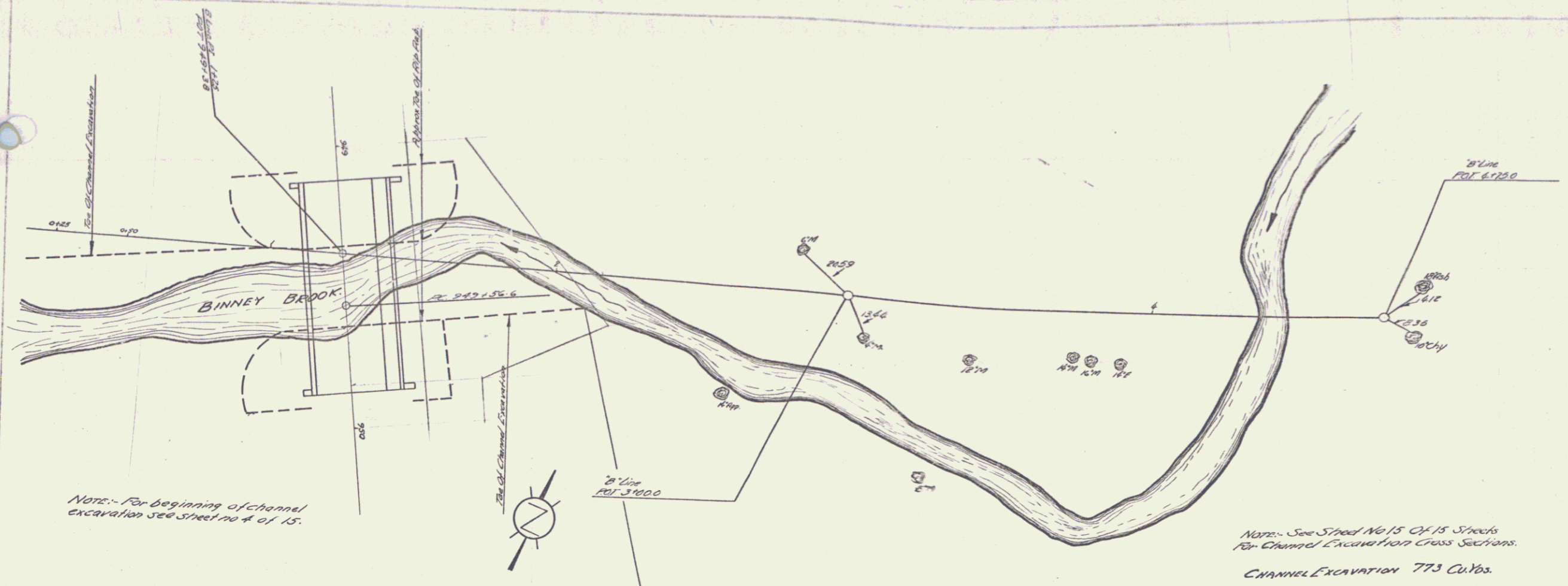
These data are for information only, and are not guaranteed to be correct.

* MODIFY FOR 4' SIDEWALK INSTEAD OF 5'. OUTSIDE SIDEWALK BEAM TO BE SPACED 4'-0" FROM ROADWAY BEAM. DIAPHRAGMS AND TRANSVERSE SIDEWALK REINFORCING TO BE SHORTENED ACCORDINGLY.

NOTES: -
 ANY CHANNEL EXCAVATION USED FOR ITEMS OTHER THAN BORROW SHALL BE REPLACED BY AN EQUIVALENT AMOUNT OF BORROW WITHOUT EXTRA COMPENSATION.
 "CHANNEL EXCAVATION" AND "STRUCTURE EXCAVATION" UNSUITABLE FOR FILL, TO BE WASTED AS DIRECTED BY THE ENGINEER.
 "MAINTENANCE OF TRAFFIC" TO INCLUDE MAINTENANCE AND FINAL REMOVAL OF EXISTING TEMPORARY BRIDGE.

WEST BRIDGE
 WILMINGTON
 E.R. 9A
 ROUTE 99
 Sheet 4 of 15

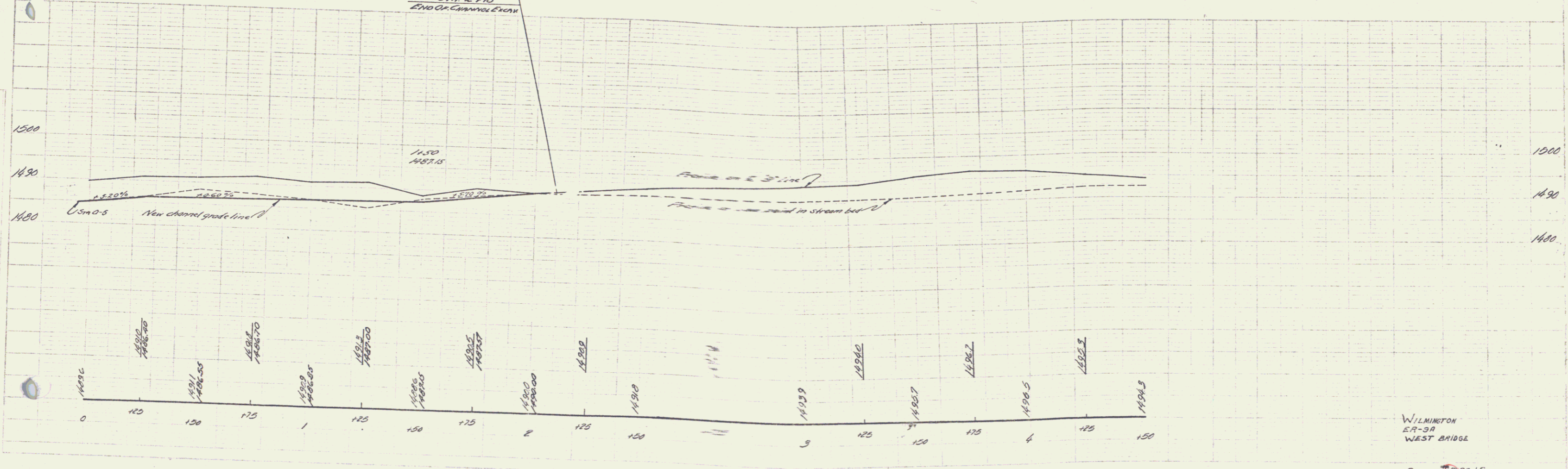
2' Contour
 10' Contour
 15' Contour
 20' Contour
 25' Contour
 30' Contour
 35' Contour
 40' Contour
 45' Contour
 50' Contour
 55' Contour
 60' Contour
 65' Contour
 70' Contour
 75' Contour
 80' Contour
 85' Contour
 90' Contour
 95' Contour
 100' Contour
 105' Contour
 110' Contour
 115' Contour
 120' Contour
 125' Contour
 130' Contour
 135' Contour
 140' Contour
 145' Contour
 150' Contour



Note: For beginning of channel excavation see sheet no 4 of 15.

Note: See Sheet No 15 of 15 Sheets for Channel Excavation Cross Sections.
CHANNEL EXCAVATION 773 Cu Yds.

Sta 2+10
End of Channel Excavation



WILMINGTON
ER-90
WEST BRIDGE

SHEET 5 OF 15