

FED. ROAD DIST. NO.	STATE	FED. AID PROJ. NO.	FISCAL YEAR	SHEET NO.	TOTAL SHEETS
11	1237	7323	7	7	7

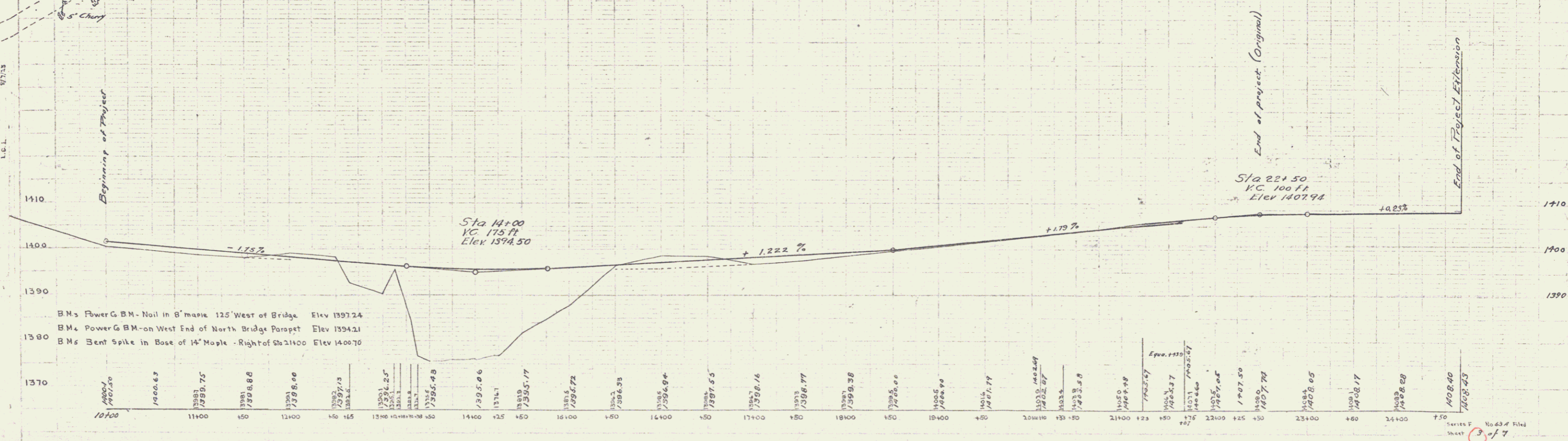
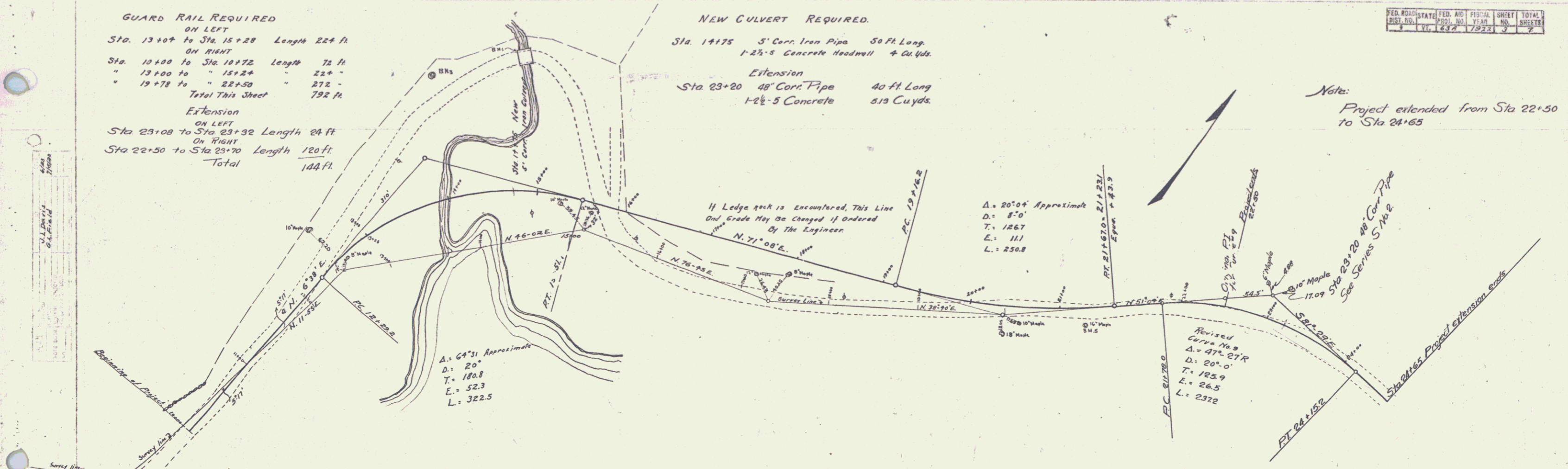
GUARD RAIL REQUIRED
 ON LEFT
 Sta. 13+04 to Sta. 15+28 Length 224 ft
 ON RIGHT
 Sta. 10+00 to Sta. 10+72 Length 72 ft
 " 13+00 to " 15+24 " 224 -
 " 19+78 to " 22+50 " 272 -
 Total This Sheet 792 ft

Extension
 ON LEFT
 Sta 23+08 to Sta 23+32 Length 24 ft
 ON RIGHT
 Sta 22+50 to Sta 23+70 Length 120 ft
 Total 144 ft

NEW CULVERT REQUIRED.
 Sta. 14+75 5' Cor. Iron Pipe 50 ft Long
 1-2 1/2-5 Concrete Headwall + G.W.D.

Extension
 Sta. 23+20 48" Cor. Pipe 40 ft Long
 1-2 1/2-5 Concrete 519 Cu yds.

Note:
 Project extended from Sta 22+50
 to Sta 24+65



J.L. Davis
 L.S.L.
 4/23
 7/23
 9/23

Series F No. 43 of File
 Sheet 3 of 7