

INDEX OF SHEETS

SHEET NO. 1	TITLE PAGE
" 2	TYPICAL CROSS-SECTION OF IMPROVEMENT (3" BITUMINOUS MACADAM SURFACE COURSE)
" 3	BANKING AND WIDENING TABLES
" 4-14	PLAN AND PROFILE SHEETS
" 15	STANDARD SHEET 528, PIPE CULVERTS
" 16	" " 529, BOX CULVERTS
" 17	" " 530, GUARD RAIL
" 18	" " 531, BOUNDARY MARKERS
" 19	" " 531, BOX CULVERTS
" 20	" " 540, BARRICADES, SIGNS & LIGHTS
" 21-48	CROSS-SECTIONS

Standard sheets 528 and 529 approved by the Chief Engineer on July 11, 1933.
 Standard sheet 530 approved by the Chief Engineer on Aug. 15, 1933.
 Standard sheet 531 approved by the Chief Engineer on July 25, 1934.

FED. ROAD DIST. NO.	STATE	FED. AID PROJ. NO.	FISCAL YEAR	SHEET NO.	TOTAL SHEETS
9	VT.	63-7	1936	1	48

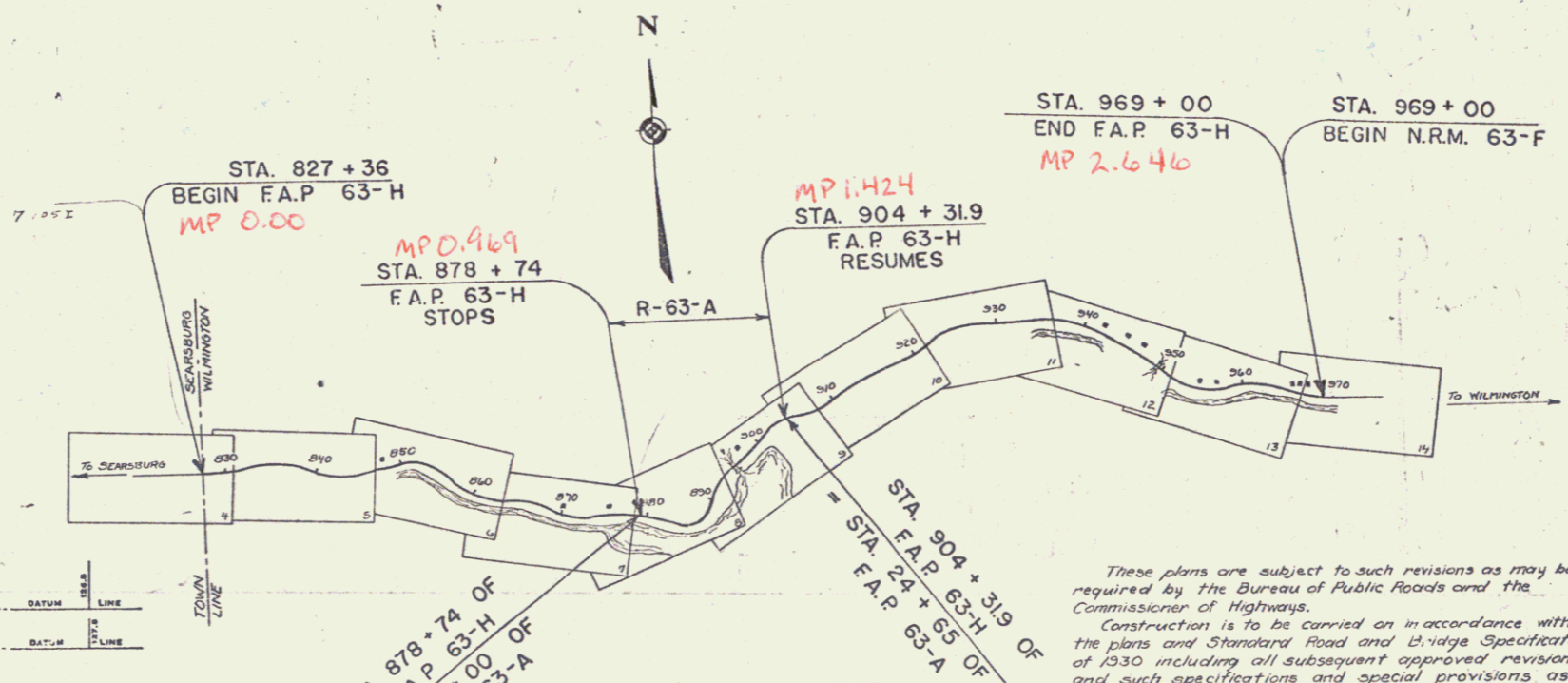
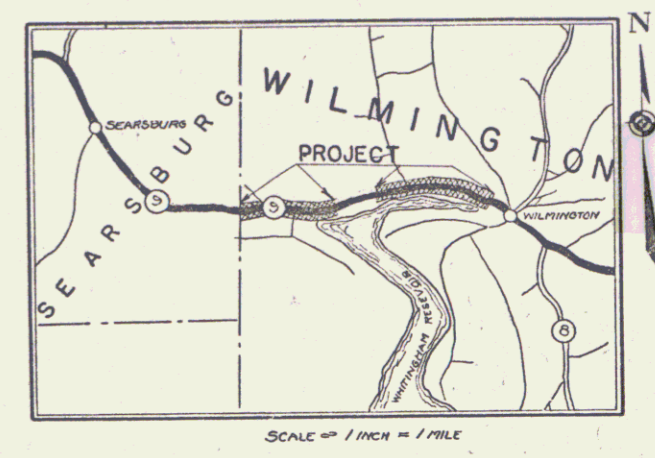
**STATE OF VERMONT
STATE HIGHWAY DEPARTMENT**

**PLAN AND PROFILE OF PROPOSED
STATE HIGHWAY**
FEDERAL AID PROJECT

**TOWN OF WILMINGTON
BRATTLEBORO-BENNINGTON ROAD**

FROM THE SEARSBURG-WILMINGTON TOWN LINE EASTERLY 0.969 MILES TO A POINT 250± FT. BEYOND THE RESIDENCE OF MR. SHULTZ (BEGINNING OF F.A.P. 63-A), RESUMING AT STA. 904+31.9 (END OF F.A.P. 63-A) AND CONTINUING EASTERLY 1.218 MILES TO A POINT IN FRONT OF THE RESIDENCE OF MASON JOHNSON.

LENGTH OF PROJECT 11,552.4 FT. = 2.187 MILES



RIGHT-OF-WAY DIVISION
TOWN FILE
PERPETUAL
Town of Wilmington
(To Be Returned To R.O.W. Division)
APPROVED: APRIL 15, 1935
H. E. August
COMMISSIONER OF HIGHWAYS
SUBMITTED BY ORDER OF THE STATE HIGHWAY BOARD
Route VT 9

CONVENTIONAL SIGNS

COUNTY LINE	GROUND ELEVATION
TOWN LINE	FENCE LINE
STONE WALL	RAILROAD
UNFENCED PROPERTY	RETAINING WALL
GUARD RAIL	CENTER LINE
TRAVELED WAY	SURVEY LINE
CULVERT	DROP INLET
TROLLEY POLE	POWER POLE
TELEPHONE POLE	TREES
HEDGE	

CURVE DATA

DEFLECTION ANGLE	Δ
DEGREE OF CURVE	D
RADIUS OF CURVE	R
TANGENT DISTANCE	T
LENGTH OF CURVE	L
EXTERNAL DISTANCE	E
POINT OF INTERSECTION	P. I.
POINT OF CURVE	P. C.
POINT OF TANGENT	P. T.
POINT ON TANGENT	P. O. T.

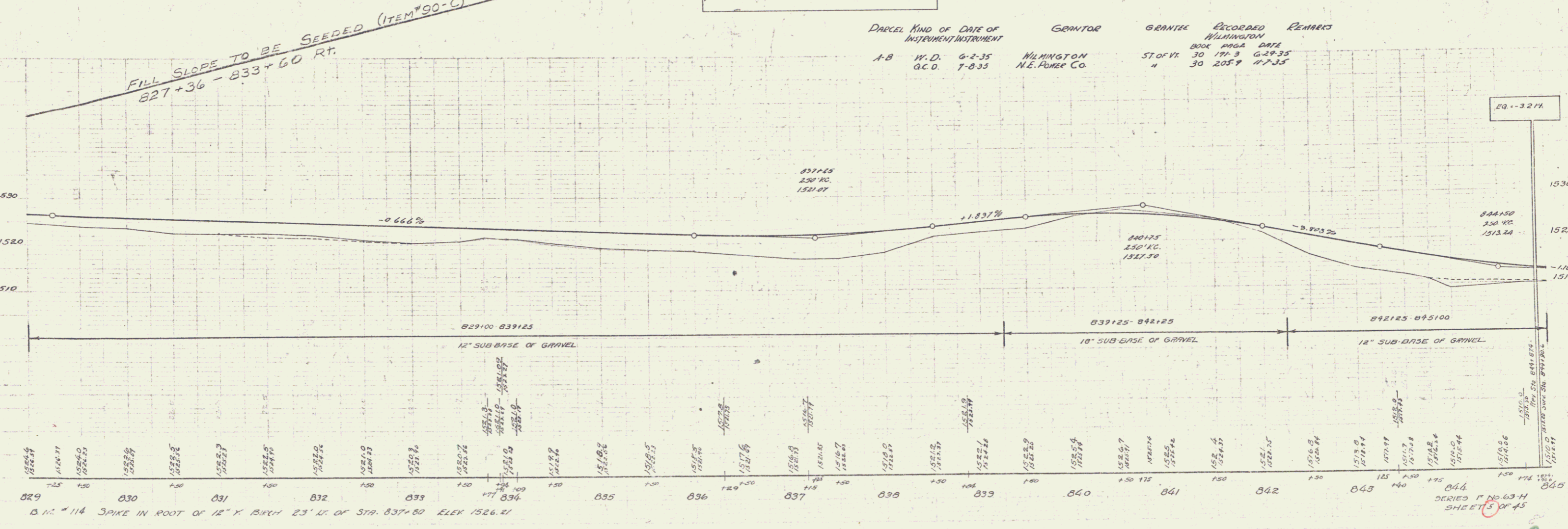
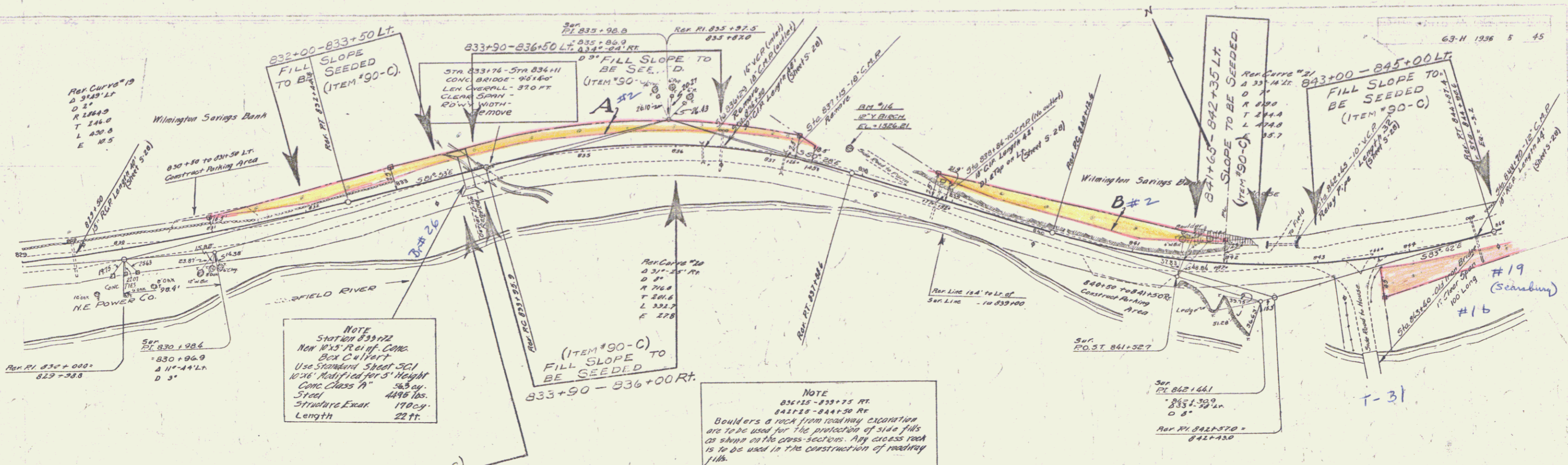
SCALES

TITLE	1" = 1000'
PLAN	1" = 50'
PROFILE	1" = 10'
CROSS-SECTIONS	1" = 5'

These plans are subject to such revisions as may be required by the Bureau of Public Roads and the Commissioner of Highways. Construction is to be carried on in accordance with the plans and Standard Road and Bridge Specifications of 1930 including all subsequent approved revisions, and such specifications and special provisions as are submitted with the plans.

MM 0000-0143

P.n# 992796 APPROVED
CORRECT: APRIL 15, 1935
ROAD ENGINEER
RECOMMENDED FOR APPROVAL
CHIEF ENGINEER BUREAU OF PUBLIC ROADS
DIRECTOR - BUREAU OF PUBLIC ROADS
SERIES F.A.P. NO. 63-7 FILED
SHEET 1 OF 48

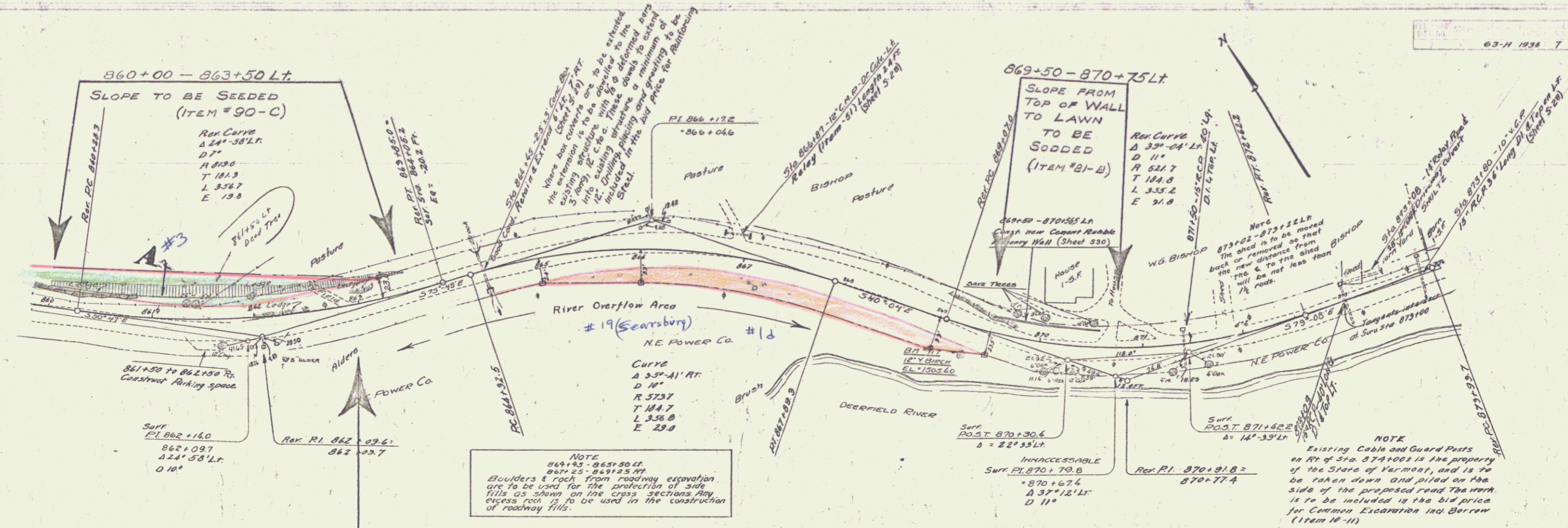


PARCEL	KIND OF DATE OF INSTRUMENT	GRANTOR	GRANTEE	RECORDED	REMARKS
A-B	W.D. 6-2-35 O.C.D. 7-8-35	WILMINGTON N.E. POWER CO.	WILMINGTON	BOOK PAGE DATE 30 171-3 6-29-35 11 30 205-9 11-7-35	

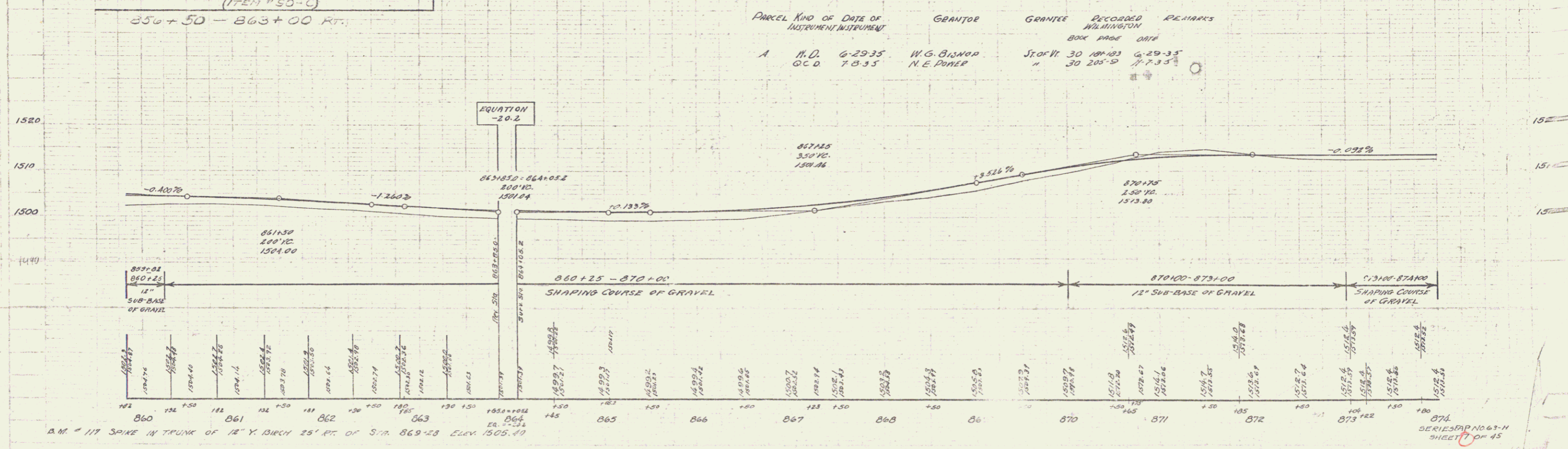
829 830 831 832 833 834 835 836 837 838 839 840 841 842 843 844 845

B.M. #14 SPIKE IN ROOT OF 12" X BIRCH 23' W. OF STA. 837+80 ELEV 1526.21

1526.4
1526.7
1527.0
1527.3
1527.6
1527.9
1528.2
1528.5
1528.8
1529.1
1529.4
1529.7
1530.0
1530.3
1530.6
1530.9
1531.2
1531.5
1531.8
1532.1
1532.4
1532.7
1533.0
1533.3
1533.6
1533.9
1534.2
1534.5
1534.8
1535.1
1535.4
1535.7
1536.0
1536.3
1536.6
1536.9
1537.2
1537.5
1537.8
1538.1
1538.4
1538.7
1539.0
1539.3
1539.6
1539.9
1540.2
1540.5
1540.8
1541.1
1541.4
1541.7
1542.0
1542.3
1542.6
1542.9
1543.2
1543.5
1543.8
1544.1
1544.4
1544.7
1545.0
1545.3
1545.6
1545.9
1546.2
1546.5
1546.8
1547.1
1547.4
1547.7
1548.0
1548.3
1548.6
1548.9
1549.2
1549.5
1549.8
1550.1
1550.4
1550.7
1551.0
1551.3
1551.6
1551.9
1552.2
1552.5
1552.8
1553.1
1553.4
1553.7
1554.0
1554.3
1554.6
1554.9
1555.2
1555.5
1555.8
1556.1
1556.4
1556.7
1557.0
1557.3
1557.6
1557.9
1558.2
1558.5
1558.8
1559.1
1559.4
1559.7
1560.0
1560.3
1560.6
1560.9
1561.2
1561.5
1561.8
1562.1
1562.4
1562.7
1563.0
1563.3
1563.6
1563.9
1564.2
1564.5
1564.8
1565.1
1565.4
1565.7
1566.0
1566.3
1566.6
1566.9
1567.2
1567.5
1567.8
1568.1
1568.4
1568.7
1569.0
1569.3
1569.6
1569.9
1570.2
1570.5
1570.8
1571.1
1571.4
1571.7
1572.0
1572.3
1572.6
1572.9
1573.2
1573.5
1573.8
1574.1
1574.4
1574.7
1575.0
1575.3
1575.6
1575.9
1576.2
1576.5
1576.8
1577.1
1577.4
1577.7
1578.0
1578.3
1578.6
1578.9
1579.2
1579.5
1579.8
1580.1
1580.4
1580.7
1581.0
1581.3
1581.6
1581.9
1582.2
1582.5
1582.8
1583.1
1583.4
1583.7
1584.0
1584.3
1584.6
1584.9
1585.2
1585.5
1585.8
1586.1
1586.4
1586.7
1587.0
1587.3
1587.6
1587.9
1588.2
1588.5
1588.8
1589.1
1589.4
1589.7
1590.0
1590.3
1590.6
1590.9
1591.2
1591.5
1591.8
1592.1
1592.4
1592.7
1593.0
1593.3
1593.6
1593.9
1594.2
1594.5
1594.8
1595.1
1595.4
1595.7
1596.0
1596.3
1596.6
1596.9
1597.2
1597.5
1597.8
1598.1
1598.4
1598.7
1599.0
1599.3
1599.6
1600.0



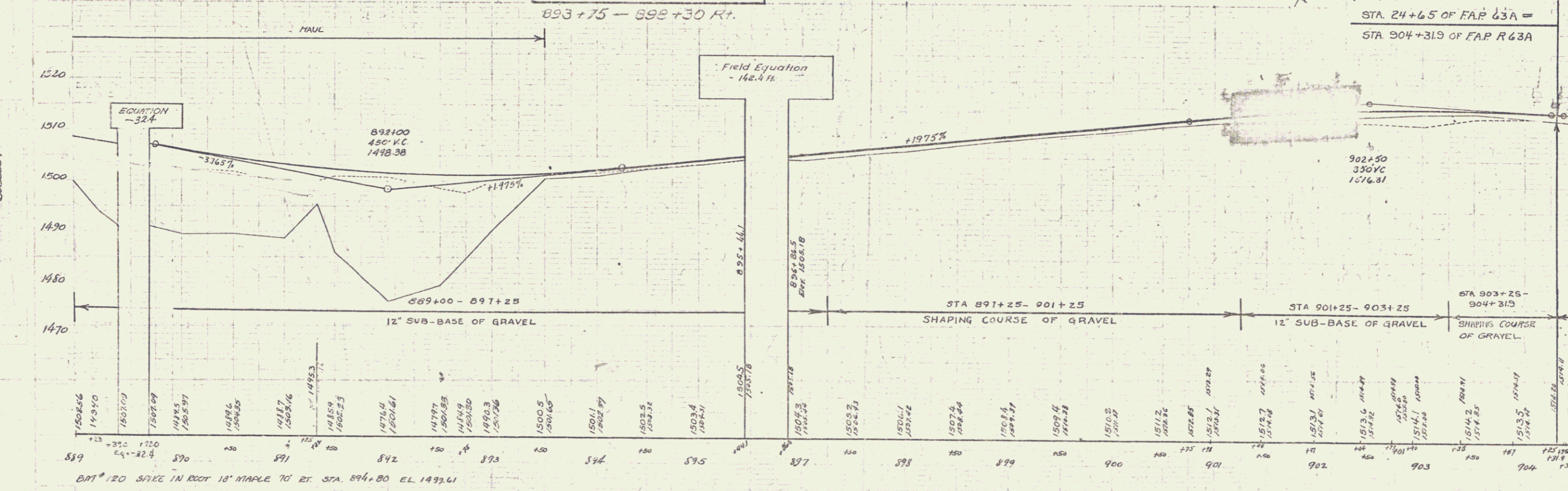
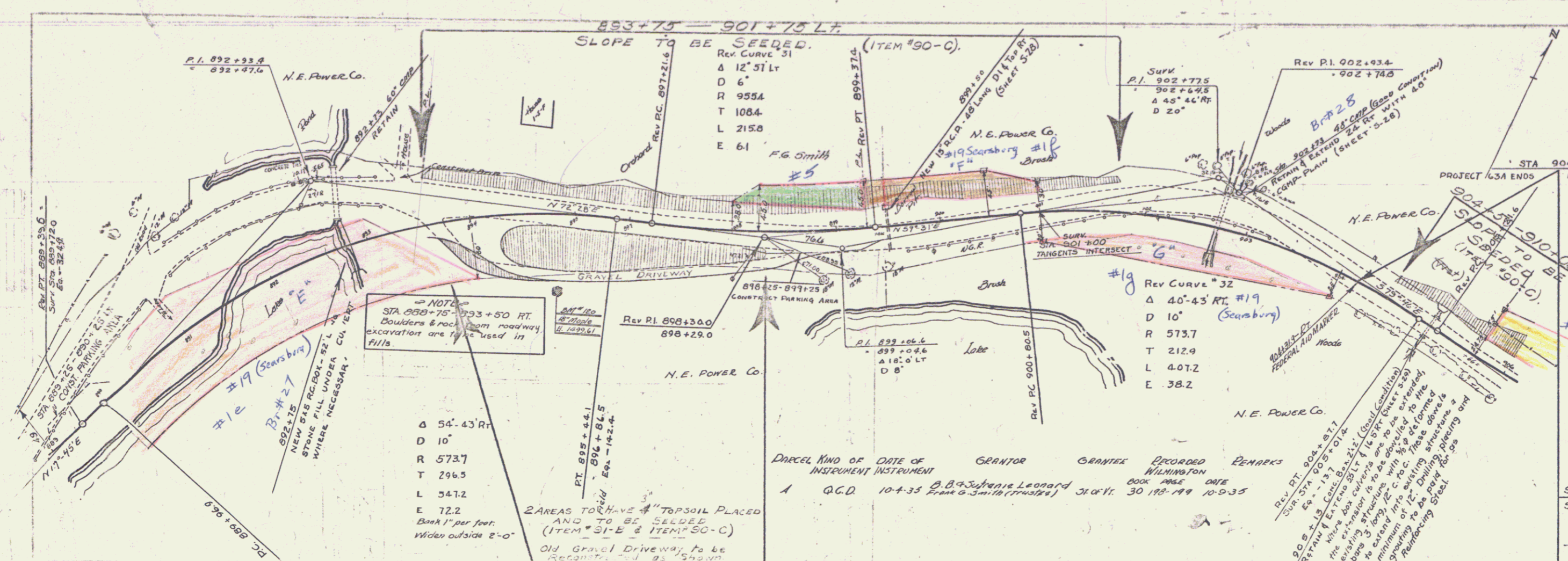
FILL SLOPE TO BE SEEDED (ITEM #50-C)
856+50 - 863+00 RT.



PARCEL	KIND OF INSTRUMENT	DATE OF INSTRUMENT	GRANTOR	GRANTEE	RECORDED BOOK PAGE DATE	REMARKS
A	M.D.	6-29-35	W.G. BISHOP	J.T. OF 30	184-203	6-29-35
	G.C.D.	7-8-35	N.E. POWER	"	30 205-2	7-7-35

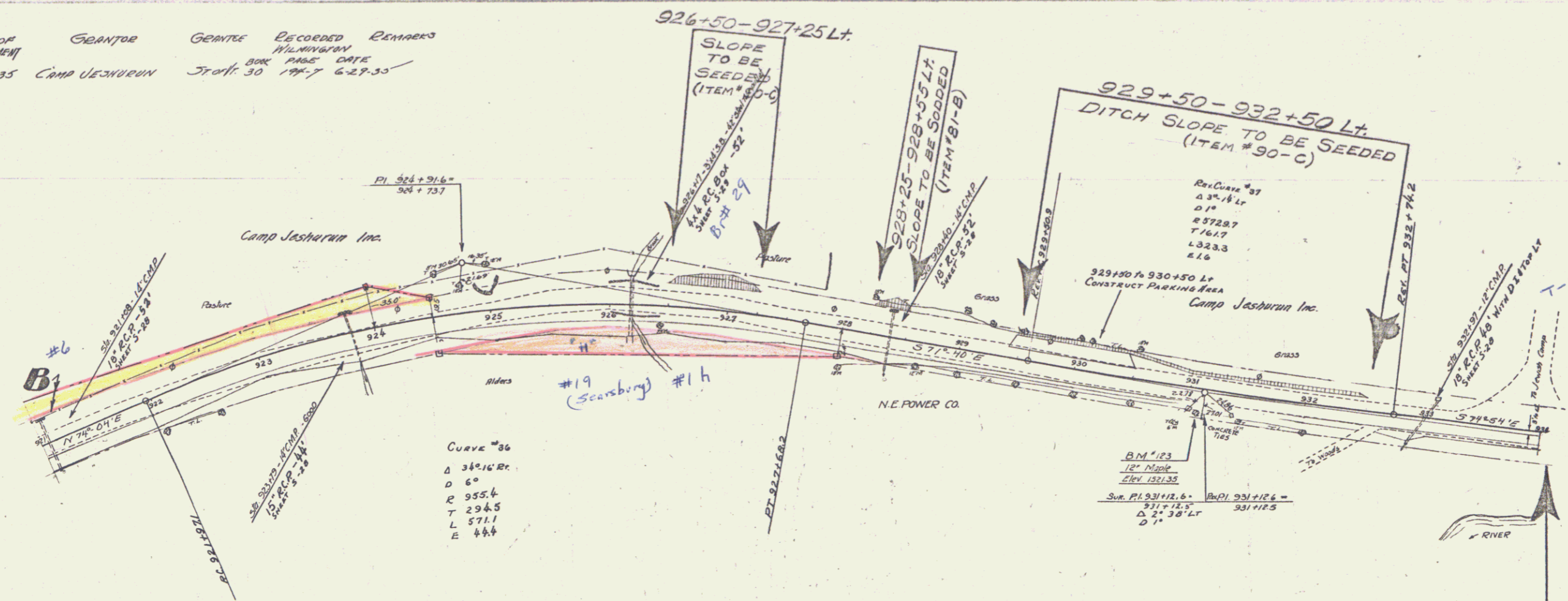
D.M. # 117 SPIKE IN TRUNK OF 14" Y. BIRCH 25' RT. OF STA. 869+58 ELEV. 1505.40

5



PARCEL #510 OF DATE OF GEANTOR GEANTOR RECORDED REMARKS
 INSTRUMENT INSTRUMENT MILWAUKEE
 ABC-D C.C.D. 6-28-35 Camp Jeshurun Staff: 30 194-7 6-29-35

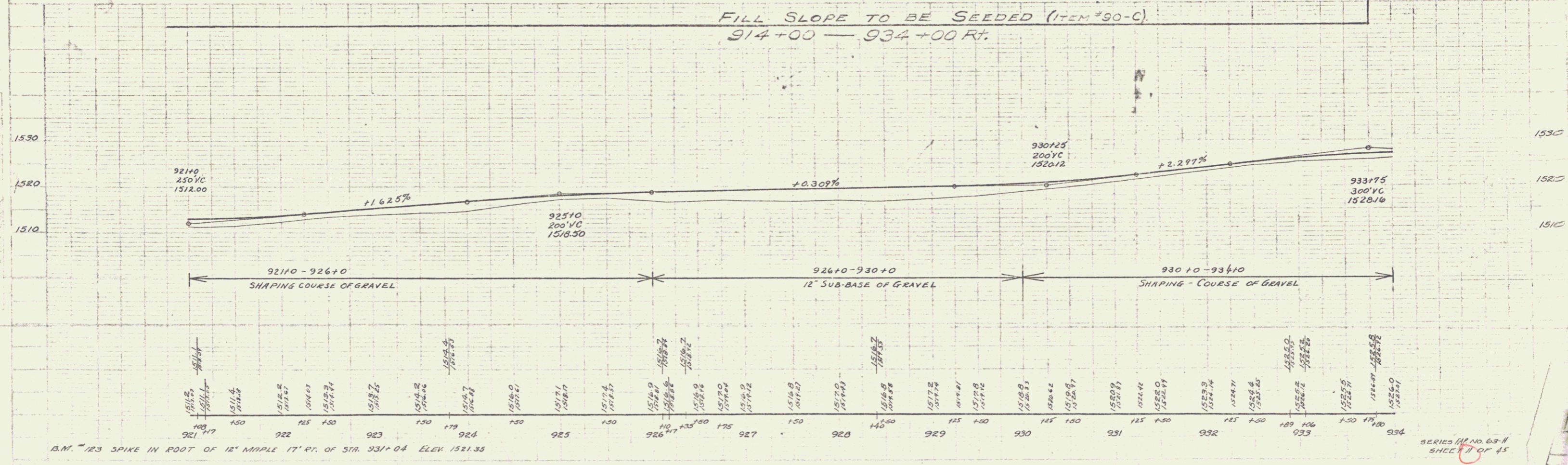
STATE OF WISCONSIN
 COUNTY OF MILWAUKEE
 63-N 1936 11 45



CURVE #36
 Δ 340'16" RC
 D 6°
 R 955.4
 T 294.5
 L 571.1
 E 444

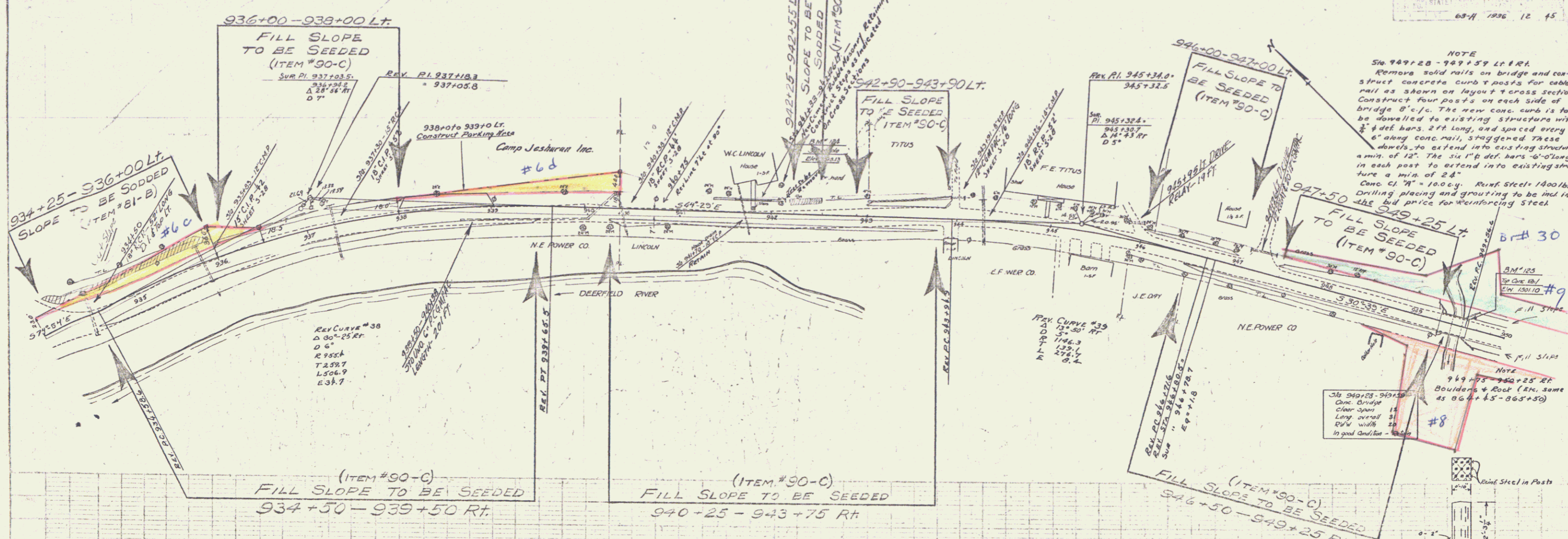
RE-CURVE #37
 Δ 3°-18' LR
 D 1°
 R 872.87
 T 76.17
 L 323.3
 E 44

FILL SLOPE TO BE SEEDED (ITEM #90-C)
 914+00 — 934+00 Ft.



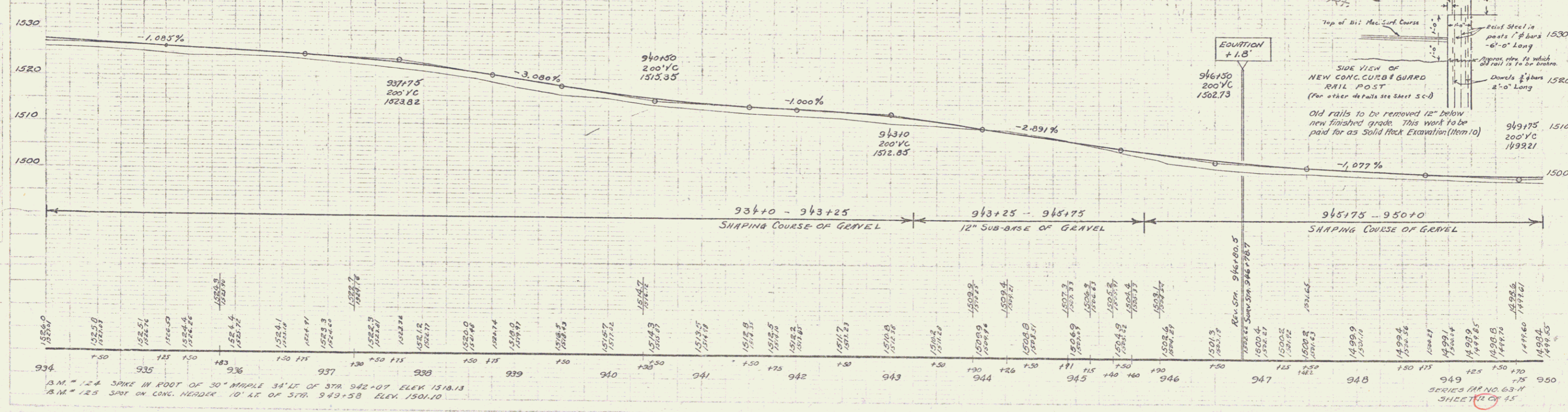
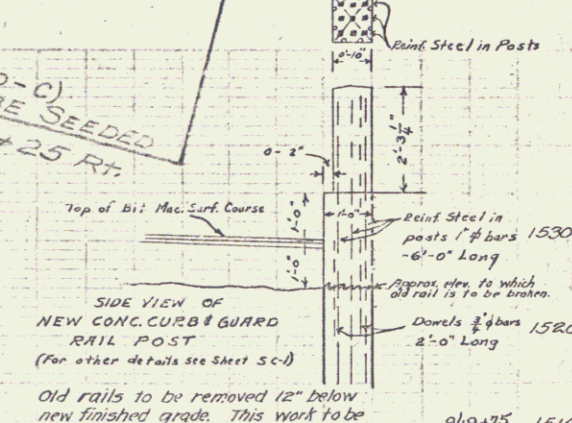
B.M. #123 SPIKE IN ROOT OF 12" MAPLE 17' RT. OF STA. 931+04 ELEV 1521.35

SERIES #1 NO. 63-N
 SHEET #1 OF 45



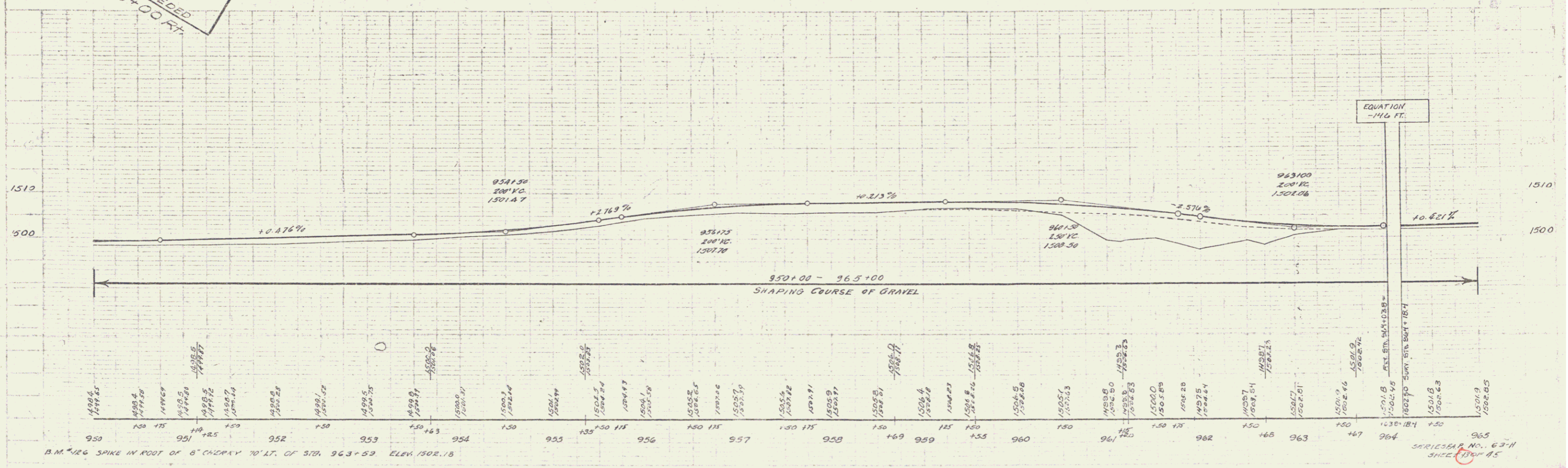
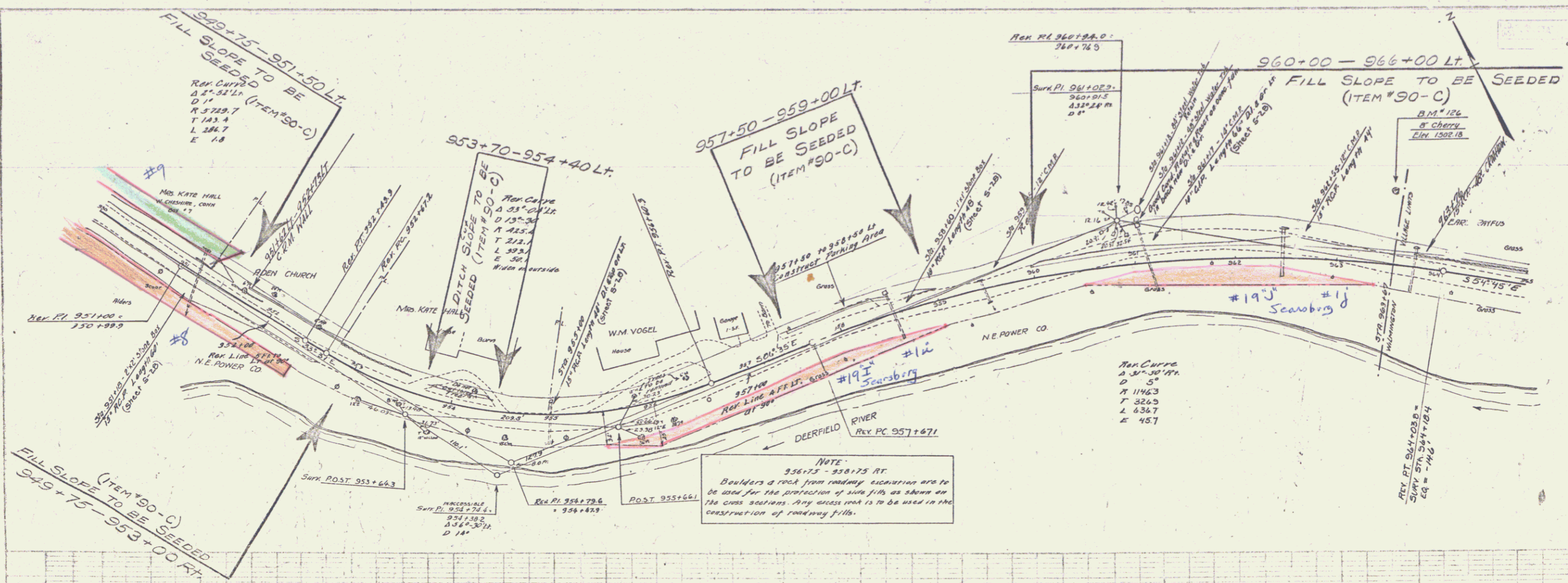
NOTE
Sta. 947+25 - 949+57 Lt. RT.
Remove solid rails on bridge and construct concrete curb posts for cable rail as shown on layout & cross section. Construct four posts on each side of bridge 8'-0" c/c. The new conc. curb is to be dowelled to existing structure with 2" x 4" def. bars, 2ft long, and spaced every 6" along conc. rail, staggered. These dowels to extend into existing structure a min. of 12". The six 1/2" def. bars 4'-0" long in each post to extend into existing structure a min. of 24".
Conc. C1 "A" = 100ccy. Runk Steel 1400/bs.
Drilling, placing and grouting to be incl. in the bid price for reinforcing steel.

NOTE
Sta. 949+25 - 949+25 RT.
Boulders to be used (size same as 064+45 - 065+50)
3/4" 949+25 - 949+25 RT.
Clear over 15'
Long over 30'
Rise width 10'
In good condition - 1950



B.M. # 124 SPIKE IN FOOT OF 30" MAPLE 34" LT. OF STA. 942+07, ELEV. 1518.13
B.M. # 125 SPOT ON CONC. HEADER 10' RT. OF STA. 949+58, ELEV. 1501.10

SERIES MAP NO. 63-11
SHEET 15 OF 15



B.M. #126 SPIKE IN ROOT OF 6" CHERRY 10' LT. OF STA. 963+52 ELEV. 1502.15

SERIES NO. 63-N SHEET 13 OF 25

