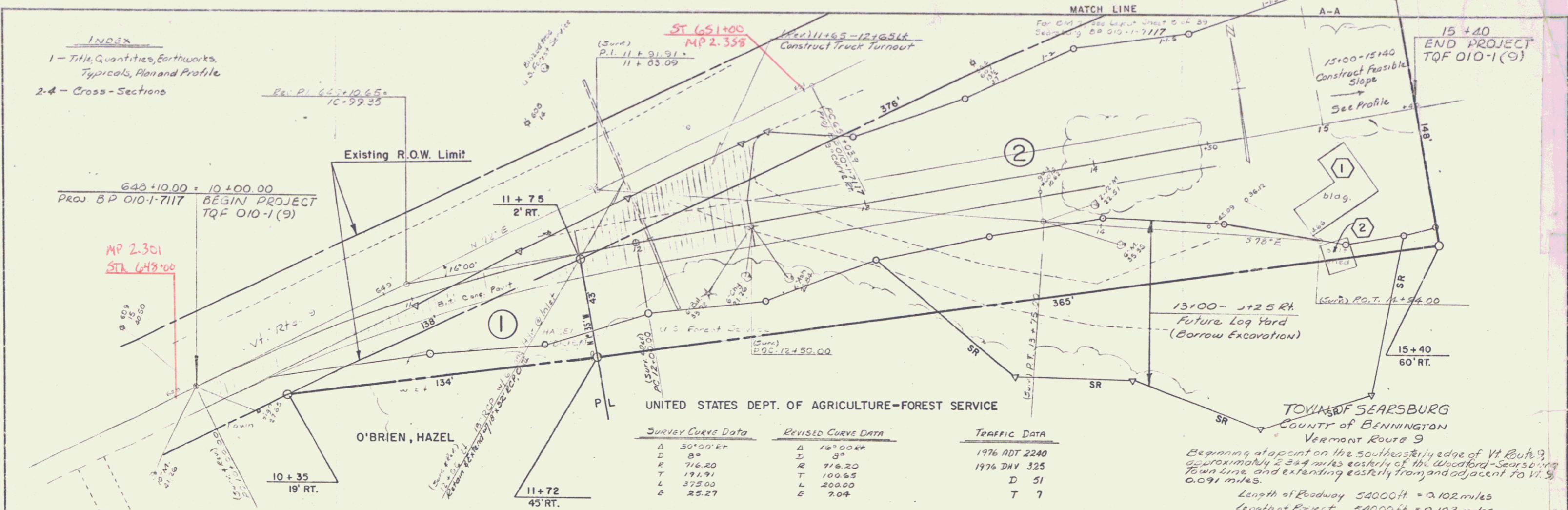


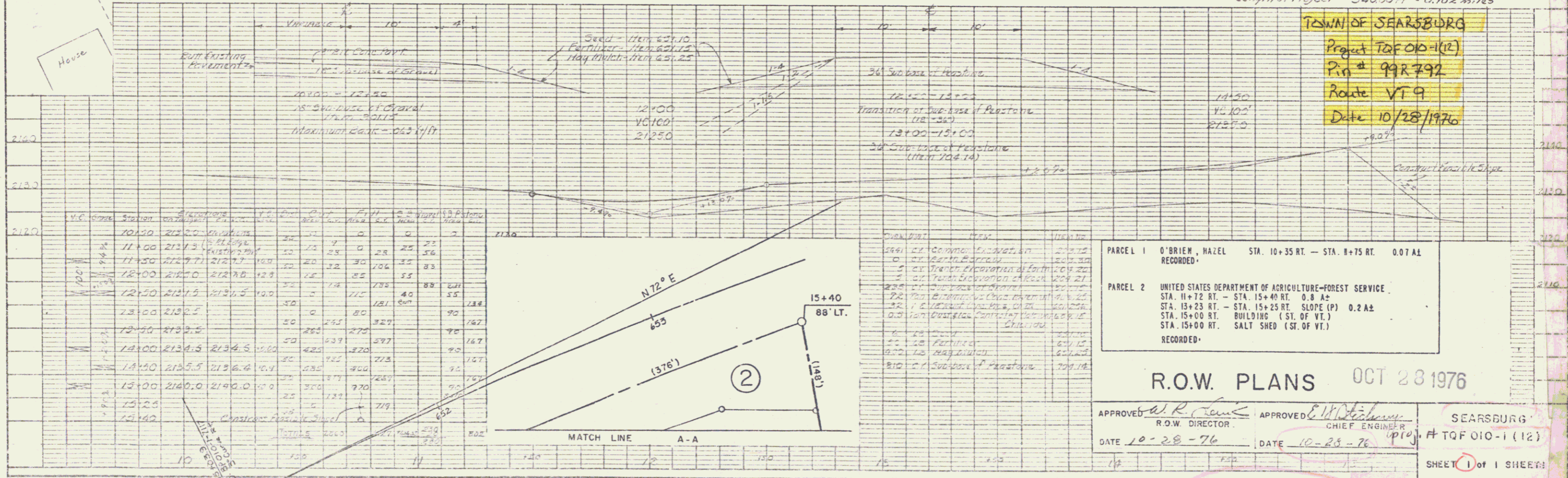
**INDEX**  
 1 - Title, Quantities, Earthworks, Typical, Plan and Profile  
 2-4 - Cross-Sections

DATE	
BY	
CHECKED	
APPROVED	
SCALE	
NO.	



SURVEY CURVE DATA		REVISED CURVE DATA		TRAFFIC DATA	
Δ	50°00'00"	Δ	16°00'00"	1976 ADT	2240
D	8°	D	3°	1976 DMY	325
R	716.20	R	716.20	D	51
T	191.91	T	100.65	T	7
L	375.00	L	200.00		
E	25.27	E	7.04		

Beginning at a point on the southeasterly edge of Vt. Route 9 approximately 2.4 miles easterly of the Woodford-Searsburg Town Line and extending easterly from and adjacent to Vt. 9 0.091 miles.  
 Length of Roadway 5400.0ft = 0.102 miles  
 Length of Project 5400.0ft = 0.102 miles



DATE	
BY	
CHECKED	
APPROVED	
SCALE	
NO.	

**TOWN OF SEARSBURG**  
 Project TQF 010-1(12)  
 Plan # 99R 792  
 Route VT 9  
 Date 10/28/1976

PARCEL 1 O'BRIEN, HAZEL STA. 10+35 RT. - STA. 11+75 RT. 0.07 AL RECORDED  
 PARCEL 2 UNITED STATES DEPARTMENT OF AGRICULTURE-FOREST SERVICE STA. 11+72 RT. - STA. 15+40 RT. 0.8 A± STA. 13+23 RT. - STA. 15+25 RT. SLOPE (P) 0.2 A± STA. 15+00 RT. BUILDING (S. OF VT.) STA. 15+00 RT. SALT SHED (S. OF VT.) RECORDED

**R.O.W. PLANS** OCT 23 1976

APPROVED *[Signature]* R.O.W. DIRECTOR  
 DATE 10-28-76  
 APPROVED *[Signature]* CHIEF ENGINEER  
 DATE 10-28-76

SEARSBURG # TQF 010-1 (12)  
 SHEET 1 of 1 SHEETS