

INDEX OF SHEETS

SHEET NO. 1	TITLE PAGE	
2	TYPICAL CROSS-SECTION	BITUMINOUS MACADAM SURFACE COURSE WITH OIL ASPHALT
3	BANKING & SWEPPING TABLES	
4-22	PLAN & PROFILE SHEETS	
23	STANDARD STRUCTURE SHEET 520	PIPE CULVERTS
24		521 BOX
25		522 GUARD RAIL
26-33	CROSS SECTIONS	

FED. ROAD DIST. NO.	STATE	STATE PROJ. NO.	FISCAL YEAR	SHEET NO.	TOTAL SHEETS
9	VT.	105-M	1932	1	55

**STATE OF VERMONT
STATE HIGHWAY DEPARTMENT**

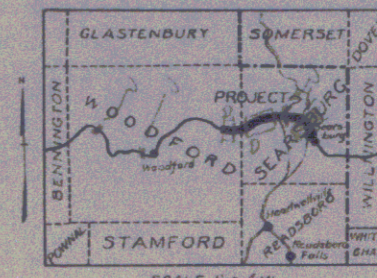
**PLAN AND PROFILE OF PROPOSED
STATE HIGHWAY**

STATE PROJECT

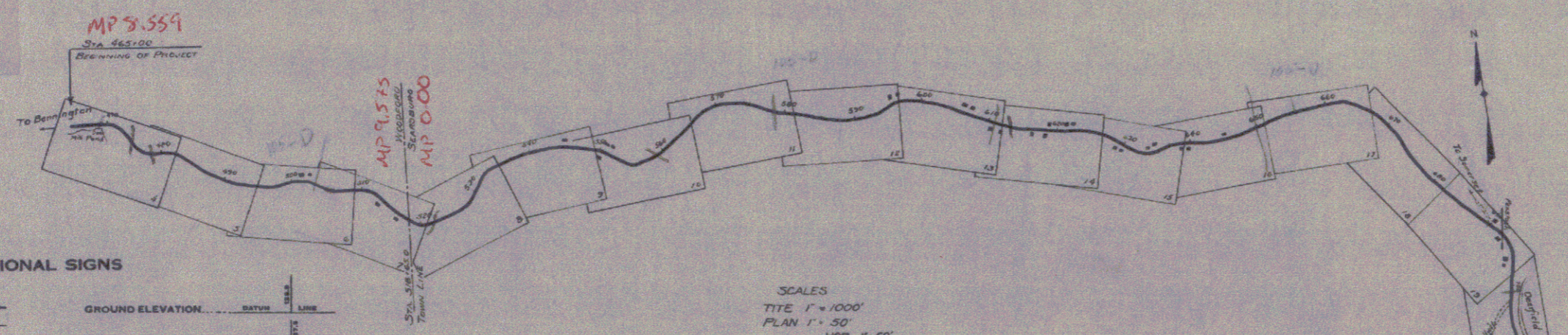
**TOWNS OF WOODFORD - SEARSBURG
BENNINGTON-BRATTLEBORO ROAD**

FROM 4365 FEET WEST OF THE
WOODFORD-SEARSBURG TOWN LINE
EAST 5.074 MILES TO THE BRIDGE
OVER MOSS GLEN BROOK

LENGTH OF PROJECT 26792.0 FT. 5.074 MI.



PROJECT: Woodford-Searsburg
 NUMBER: 105-M
 TYPE: Macadam
 CONTRACTOR: Lane Construction Corp.
 LOCATION: See File Card
 YEAR: 1932



CONVENTIONAL SIGNS

COUNTY LINE
TOWN LINE
FENCE LINE
STONE WALL
UNFENCED PROPERTY
GUARD RAIL
TRAVELED WAY
RAILROAD
RETAINING WALL
CENTER LINE
SURVEY LINE
CULVERT
DROP INLET
TROLLEY POLE
POWER POLE
TELEPHONE POLE
TREES
HEDGE

CURVE DATA

DEFLECTION ANGLE Δ
DEGREE OF CURVE D
RADIUS OF CURVE R
TANGENT DISTANCE T
LENGTH OF CURVE L
EXTERNAL DISTANCE E
POINT OF INTERSECTION P. I.
POINT OF CURVE P. C.
POINT OF TANGENT P. T.
POINT ON TANGENT P. O. T.

SCALES
 TITLE 1" = 1000'
 PLAN 1" = 50'
 PROFILE VERT 1" = 10'
 CROSS SECTIONS 1" = 5'

Stra 733+17.7 - 733+45.7
 A 25' clear span T beam bridge with overall length of 28 ft is to be constructed as FAP 105-A at this location. This bridge is included in the contract with SP 105-M, but not included in length of SP 105-M.
 A 2 ft gravel surface course is to be constructed between the bridges at 733+45.7 & 735+65. This is included in quantities for SP 105-M but not in length of SP 105-M.

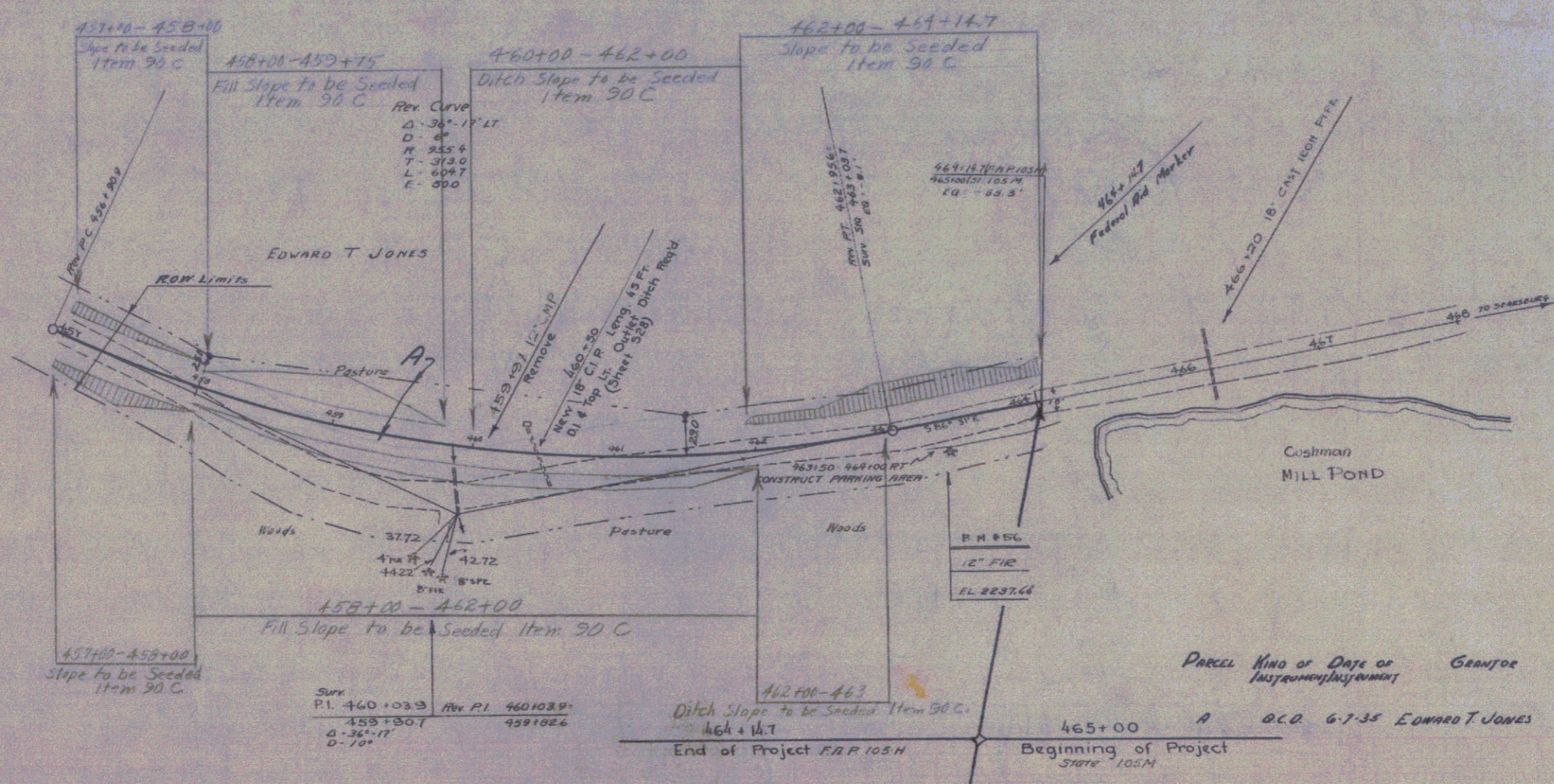
APPROVED: MAY 27, 1932
 [Signature]
 COMMISSIONER OF HIGHWAYS
 SUBMITTED BY ORDER OF THE STATE HIGHWAY BOARD

Pin # 99271
 Route VT 9
 Date 1/1/1932

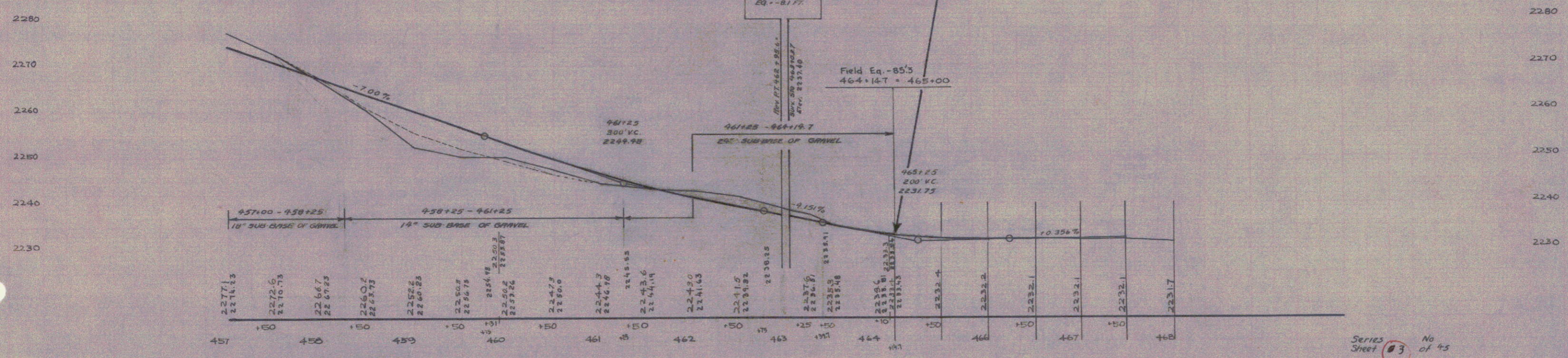
CORRECT MAY 27, 1932
 [Signature]
 ROAD ENGINEER
 SERIES 3 NO. 105-M FILED
 SHEET 1 OF 55

POTINARI
D. WINCCHI
D. MACCHI

DATE: 1057 1138 11 95



Parcel	Kind of	Date of	Grantor	Grantee	Recorded
	Instrument				
A	Q.C.O.	6-7-35	EDWARD T JONES	WOODRUFF	18 399 613-35



BM "26 SPIRE IN ROOT 12" FIR 18 FT FT OF STA. 463+50 ELEV. 2237.66

Series Sheet 03 No of 45

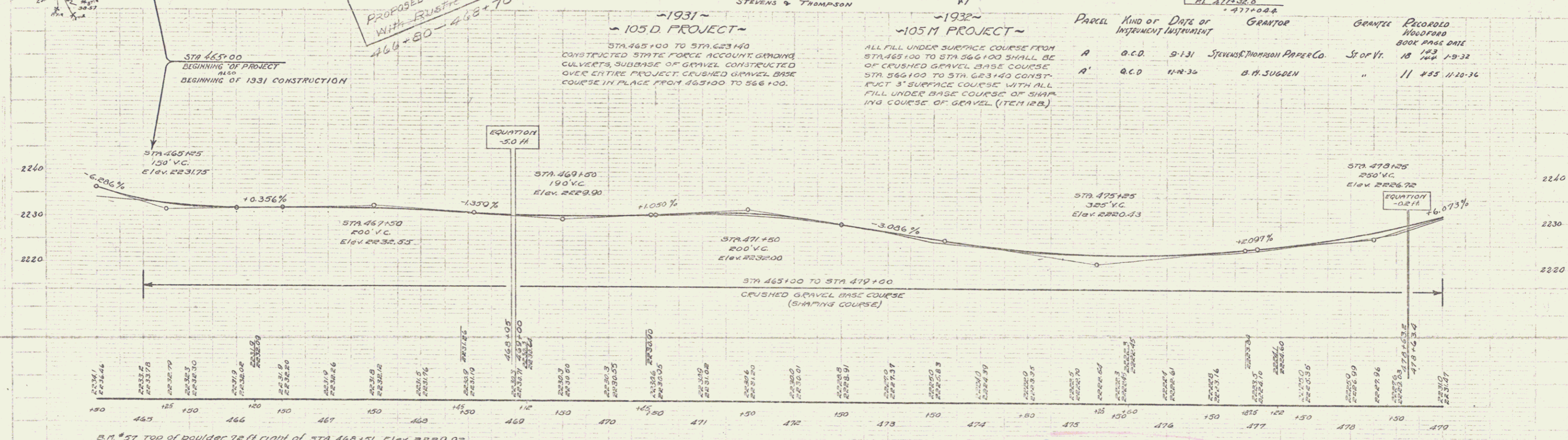
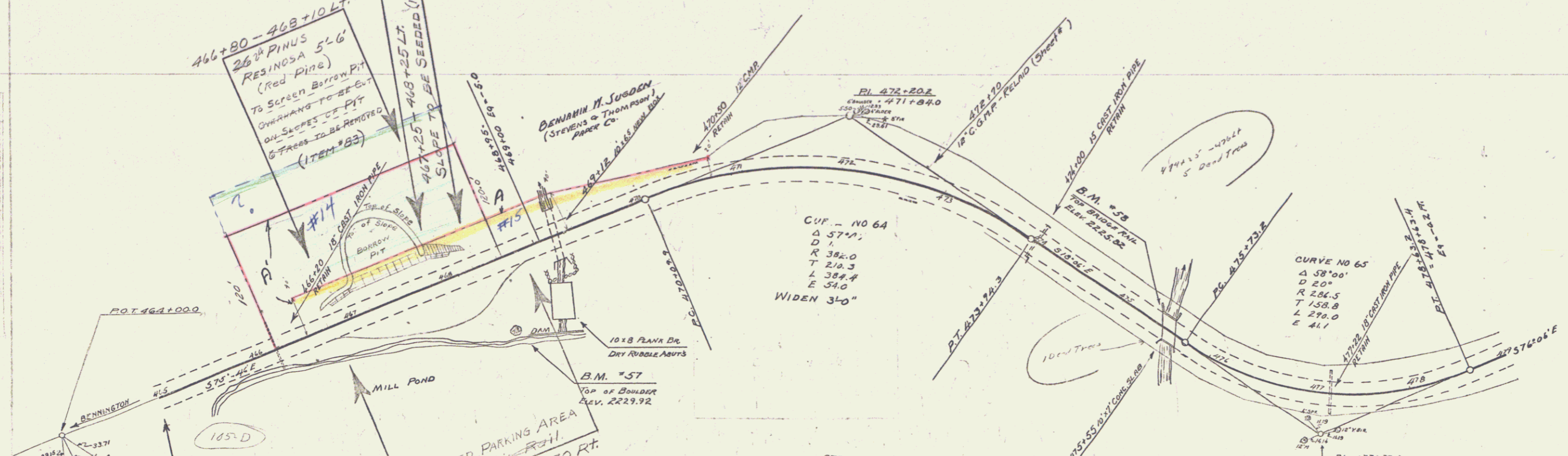
WOOD GUARD RAIL	
STATION	LEFT RIGHT
464+20	~ 24

GUIDE POSTS OF WOOD			
STATION	LEFT	RIGHT	
464+20	1	1	
474+00	1	1	
477+22	1	1	

CABLE GUARD RAIL			
STA. TO STA.	LEN. R.	CONST.	PAY LEN. R.
463+12	1 1/2 ft	36	80
475+55	1 1/2 ft	36	80

DRIVEWAY PIPE CULVERTS			
STATION	LEN. R.	PIPE SIZE	LEN. C.M.
472+70	AT. ROAD	18" 20'	22' 0"

LAND NO.	STATE	DATE	SHEET	OF
105 M	VT	1932	4	55

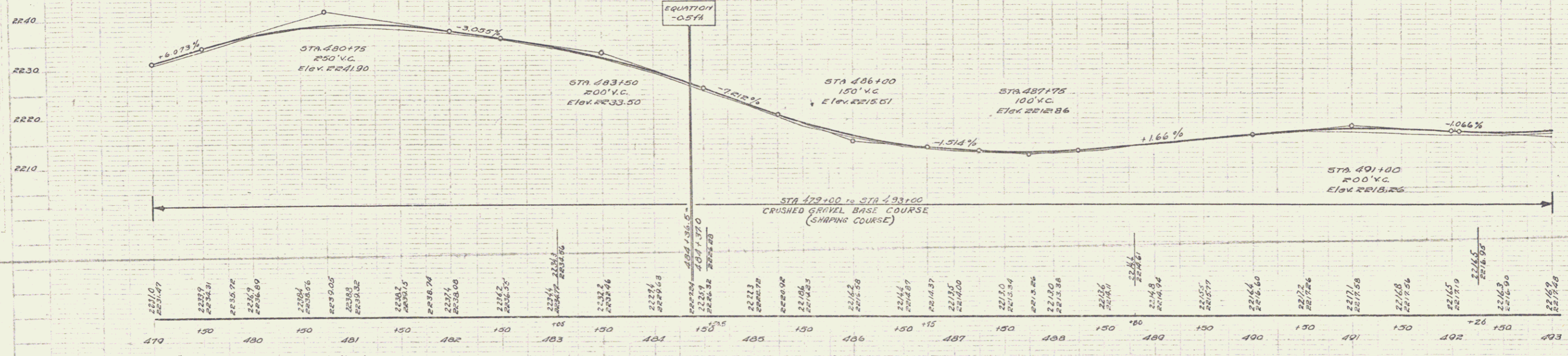
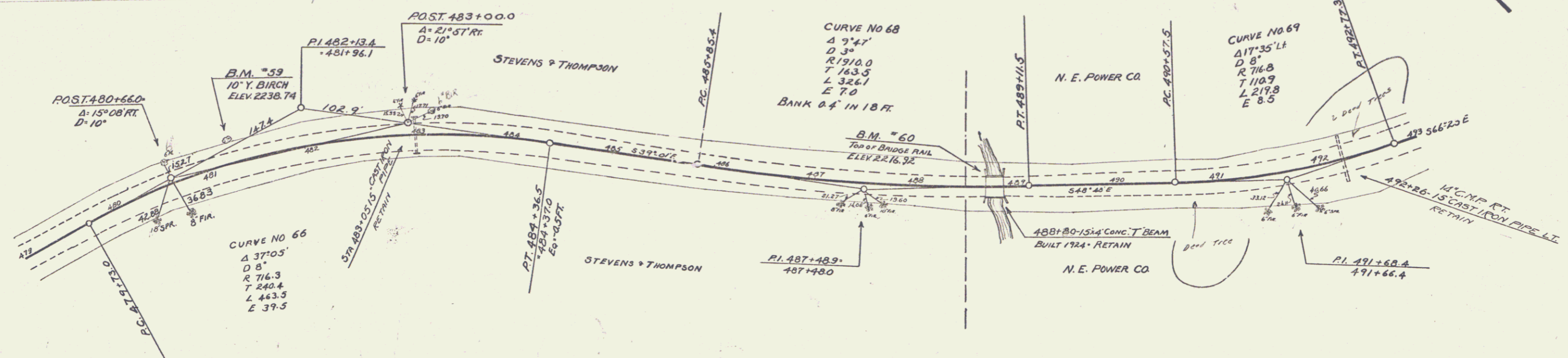


B.M. #57 top of boulder, 72 ft. right of STA 468+51 Elev. 2229.92

SERIES S NO 105 M SHEET 4 OF 55

GUIDE POSTS OF WOOD			CABLE GUARD RAIL			
STATION	LEFT	RIGHT	STATION	LOG R.	LENGTH	CONST. DIVISION
483+05	1	1	483+78	1+5 R	36	80 776
482+26	1	1				

FED. ROAD DIST. NO. STATE ROAD NO. COUNTY DIST. NO. SHEET NO.
 9 VT 105M 1932 5 55



B.M. #59 10' Yellow Birch, 24 ft left of STA 481+26, Elev. 2238.74
 B.M. #60 Top of Bridge Rail, 9.5 ft left of STA 488+70, Elev. 2216.92

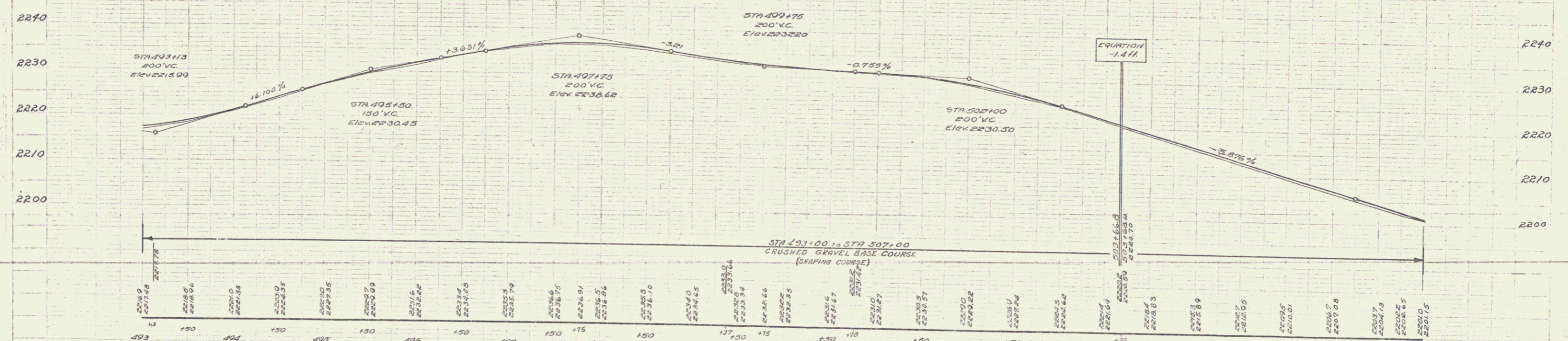
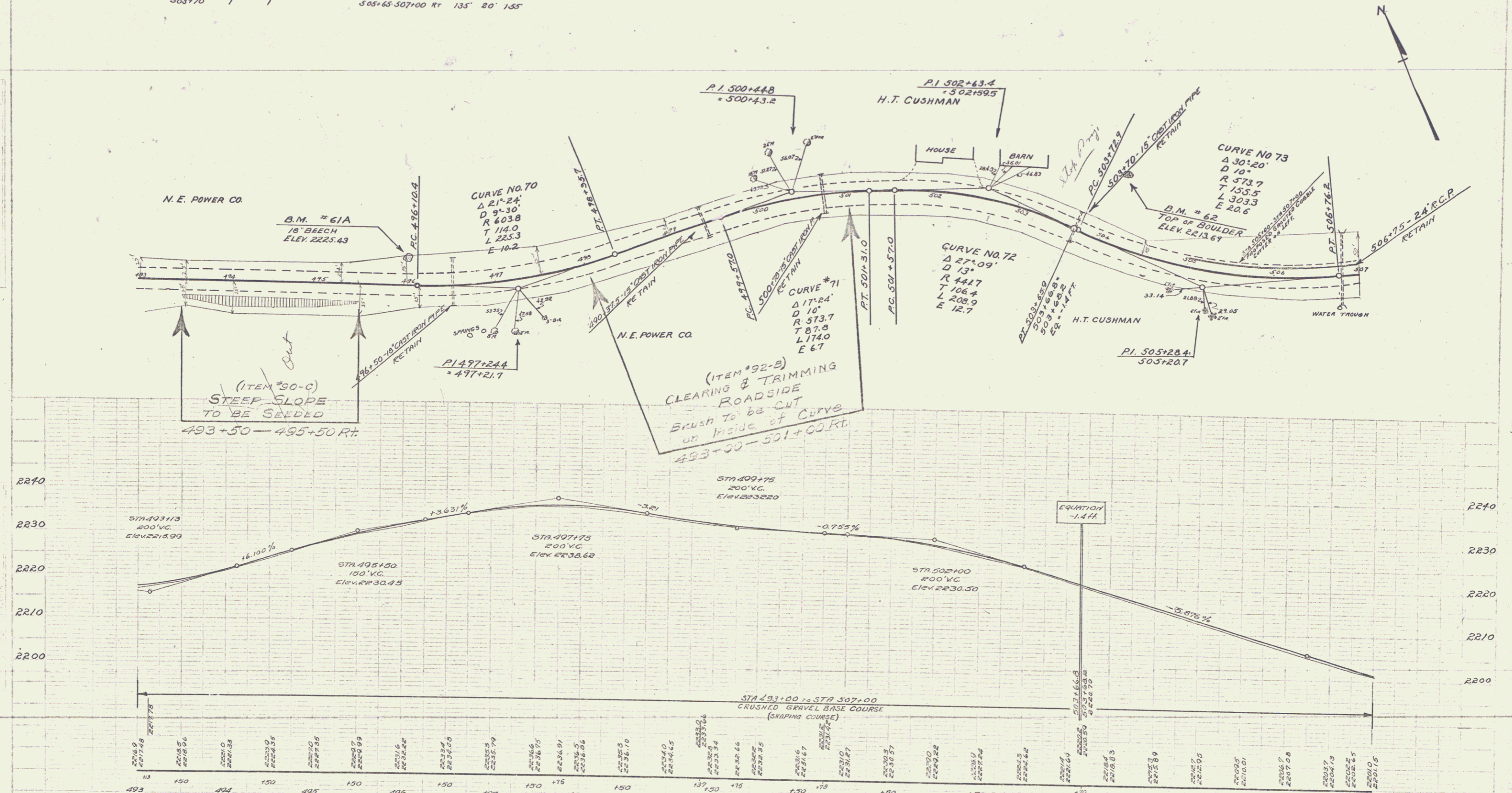
SERIES S NO 105M
 SHEET 5 OF 55

GUIDE POSTS OF WOOD		
STATION	LEFT	RIGHT
496+30	1	1
499+87	1	1
500+70	1	1
503+70	1	1

CABLE GUARD RAIL			
STA TO STA	LONG. CONC. PILE	PI	ANGLE
496+30	42	40'	38'
500+70	48	40'	88'
505+65-507+00	183	20'	203'
505+65-507+00	135	20'	135'

GROUTED COBBLE GUTTER			
STA TO STA	LONG. CONC. PILE	PI	ANGLE
505+00-507+00	200	3'-0"	56.6' WAYS

105.M 1932 6 55

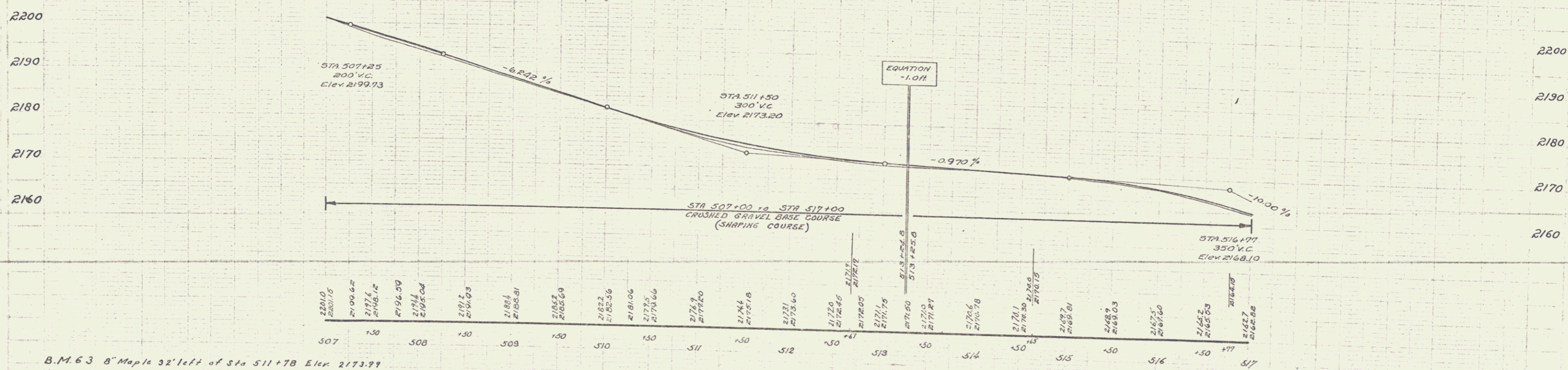
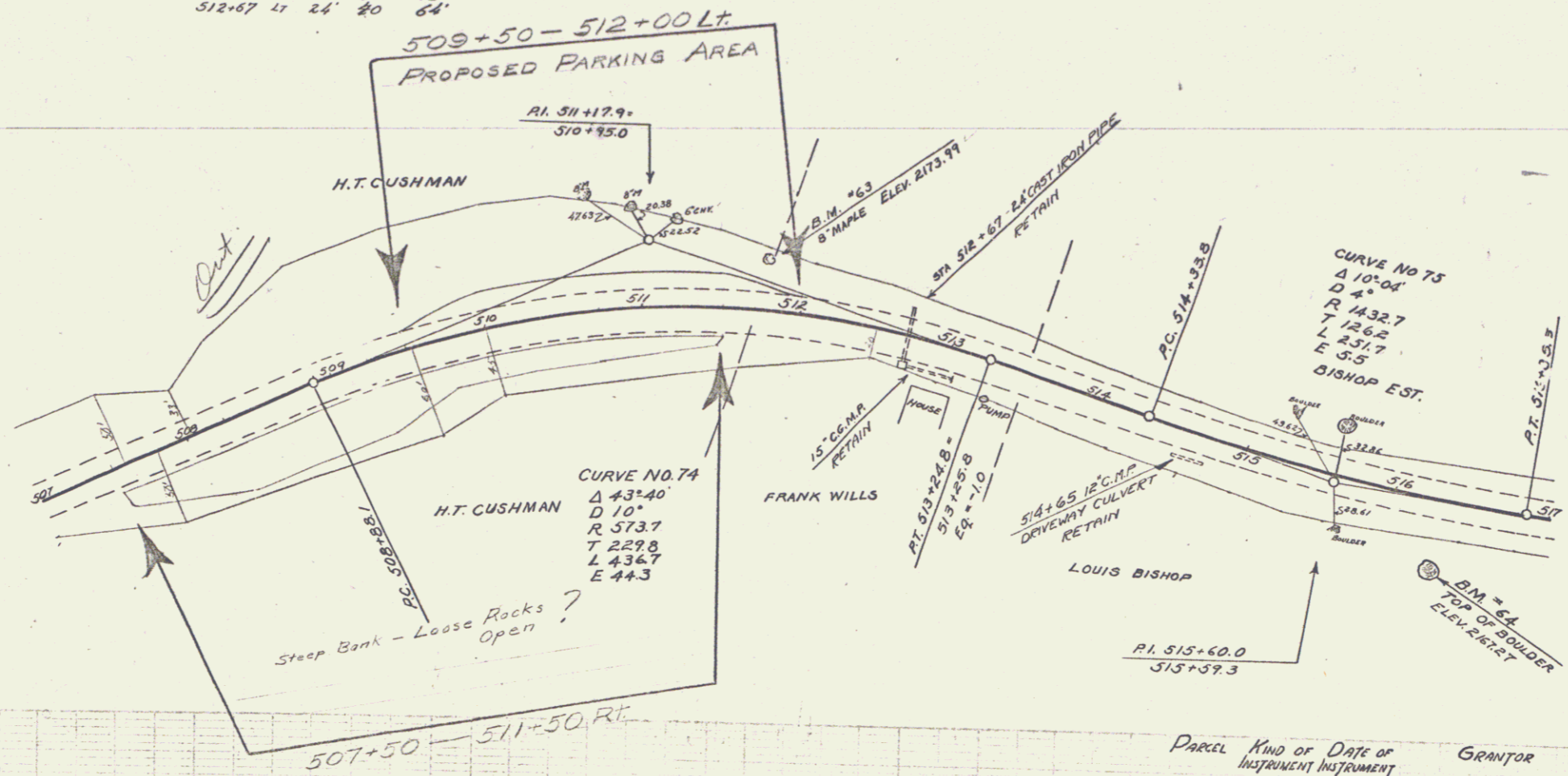


BM No 61 20" YELLOW BIRCH 16 FT LEFT OF STA 496+12 ELEV. (MISSING)
 BM No 62 TOP OF BOULDER 76 FT LEFT OF STA 503+96 ELEV. 2213.69

SERIES 3 NO 105.M
 SHEET 6 OF 55

GUIDE POST OF WOOD		CABLE GUARD RAIL		
STATION	LEFT MENT	Sta. to Sta.	LEN. CONST.	ANGLE
512+67	1	507+00 - 507+25	25'	20' 45"
		507+00 - 507+25	25'	20' 45"
		512+67 - 512+87	20'	20' 45"

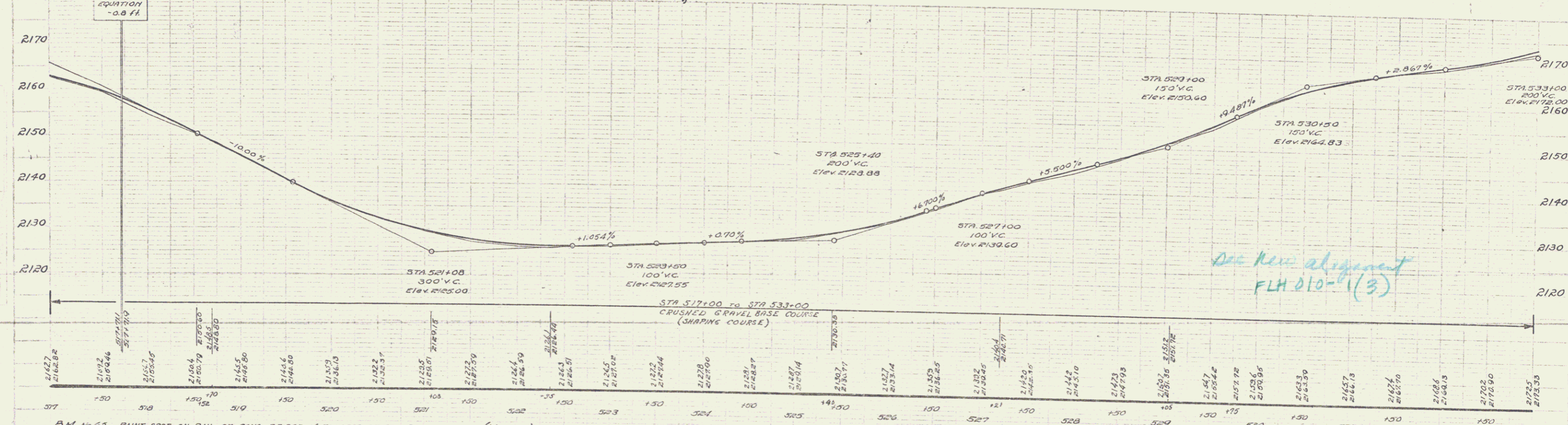
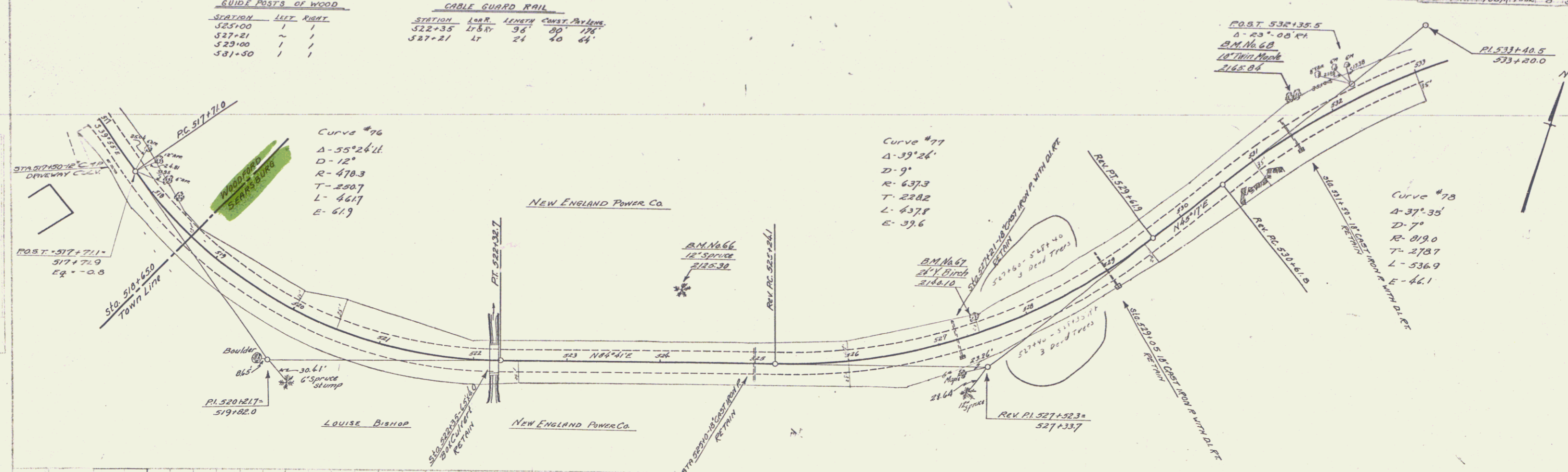
105 M 1832 7 5-5



B.M. 63 8" Maple 32' left of Sta 511+78 Elev 2173.99
 B.M. 64 Top of boulder 47th right of Sta 516+31 Elev 2167.27

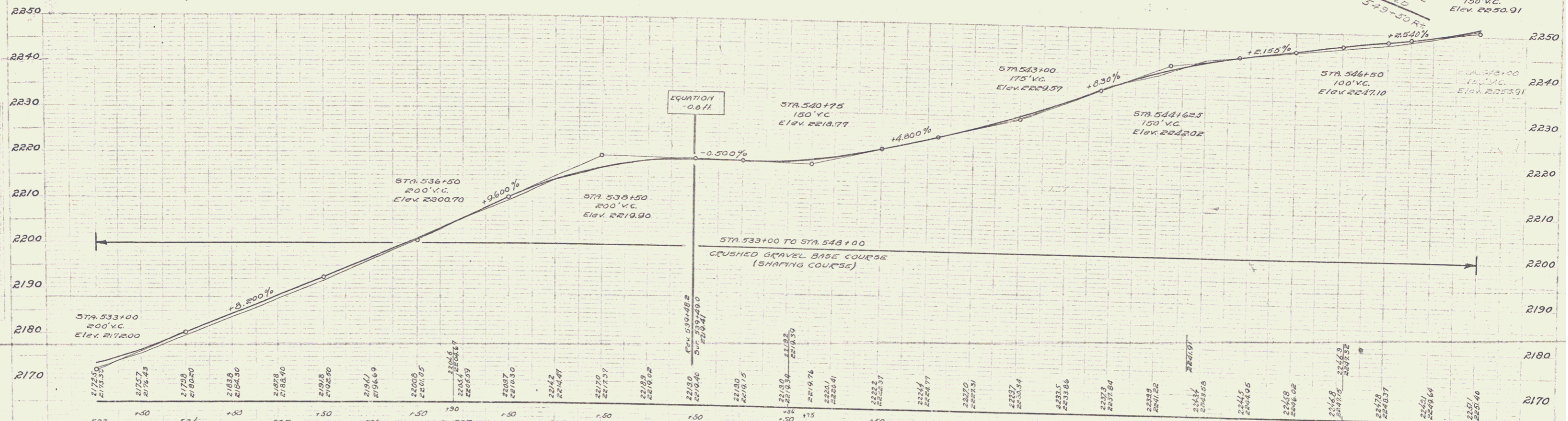
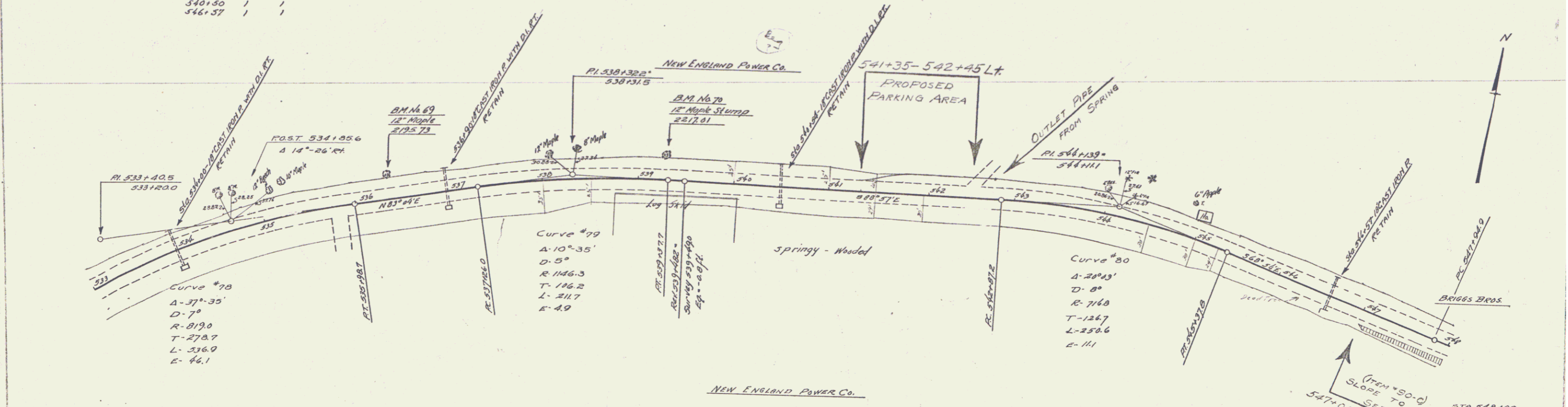
SERIES S NO 105 M
 SHEET 6 OF 55

GUIDE POSTS OF WOOD		CABLE GUARD RAIL			
STATION	LEFT	STATION	LEN	LENGTH	CONST. PAVEMENT
525+00	1	522+35	17.87	36	80
527+21	1	527+21	17	24	40
529+00	1				
531+50	1				

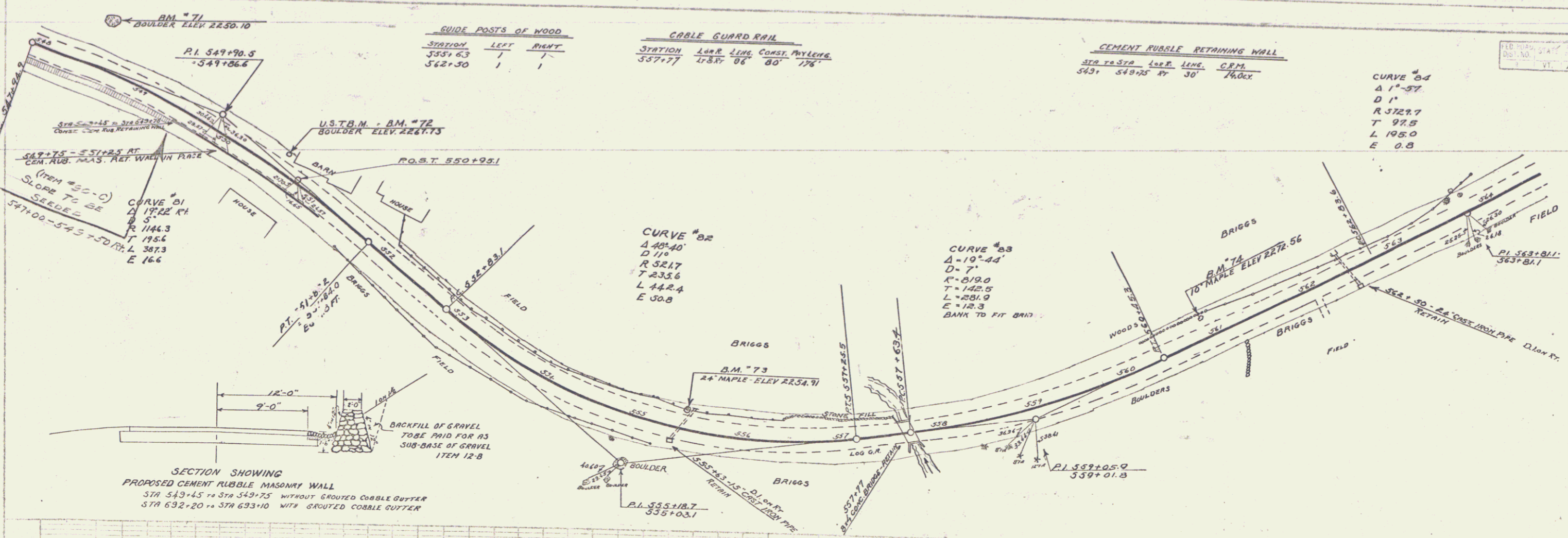


B.M. No. 65 PAINT SPOT ON RAIL OF CONC. BRIDGE 6 FT. LEFT OF STA 524+25 ELEV. (MISSING)
 B.M. No. 66 SPIKE IN ROOT OF 12" SPRUCE 80 FT. LEFT OF STA 524+25 ELEV. 2129.30
 B.M. No. 67 SPIKE IN ROOT OF 24" YELLOW BIRCH 10 FT. LEFT OF STA 527+43 ELEV. 2140.10
 B.M. No. 68 SPIKE IN TRUNK OF 18" TWIN MAPLE 29 FT. LEFT OF STA 531+72 ELEV. 2165.84

GUIDE POSTS OF WOOD			CABLE GUARD RAIL		
STATION	LEFT	RIGHT	STATION	LEFT	RIGHT
534+00	1	1	534+00	1r	1r
536+30	1	1	536+30	1r	1r
540+50	1	1			
546+37	1	1			

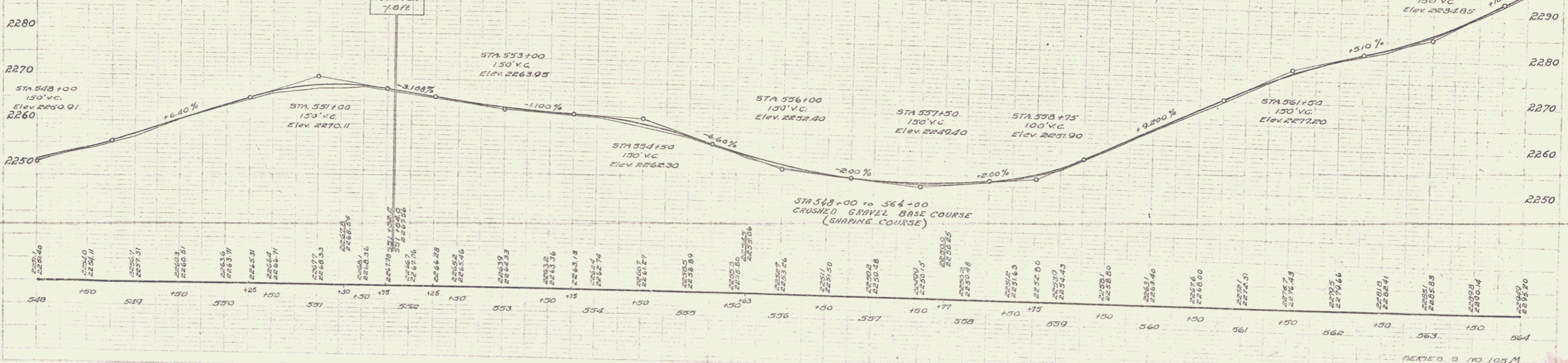


BM #69 spike in root of 12' maple, 19' left of STA 536+30. Elev 2195.73
 BM #70 spike in 12' maple stump, 24' left of STA 539+31. Elev 2217.01



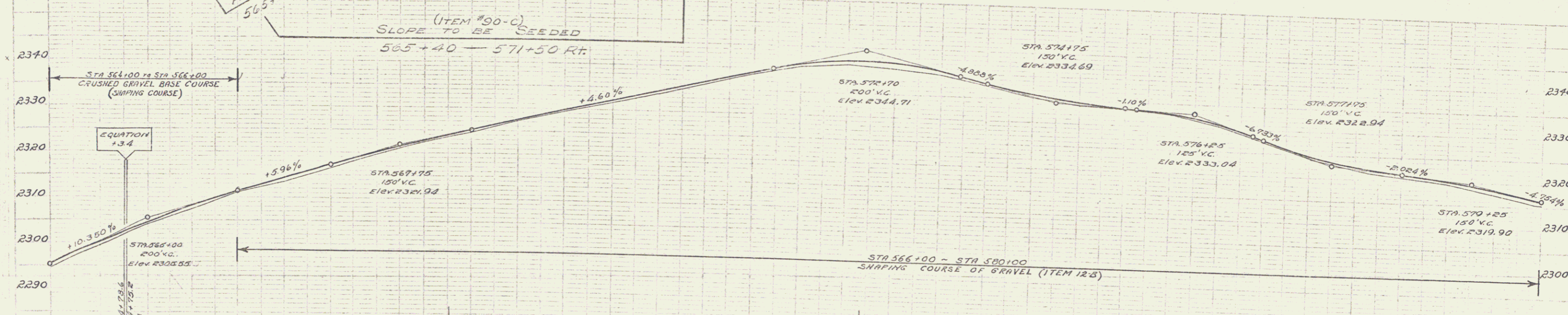
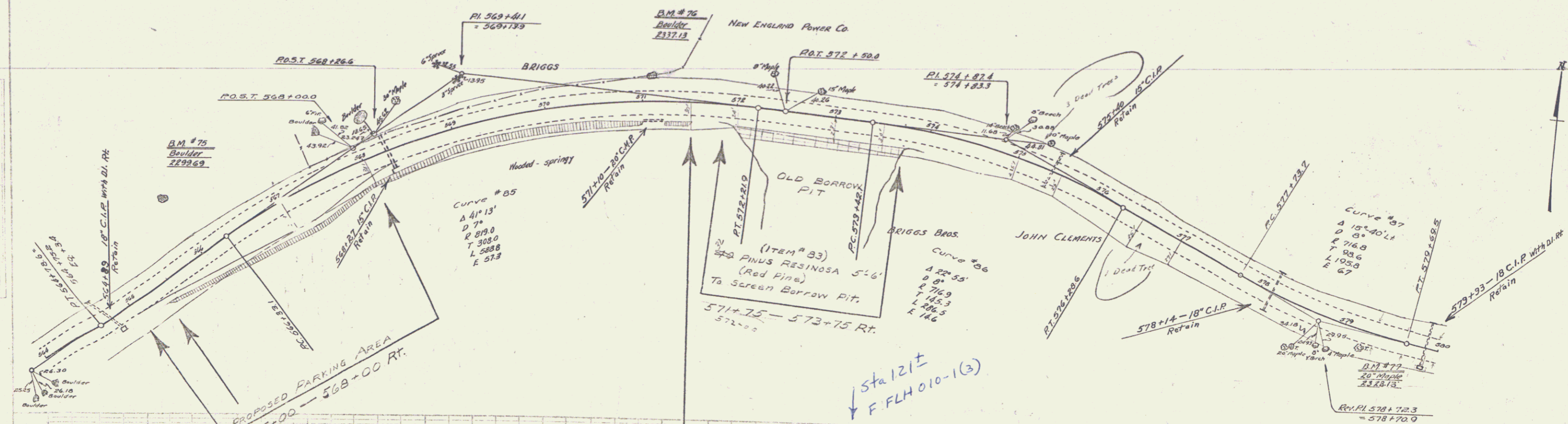
SECTION SHOWING PROPOSED CEMENT RUBBLE MASONRY WALL
 STA 543+45 TO STA 549+75 WITHOUT GROUDED COBBLE GUTTER
 STA 532+20 TO STA 633+10 WITH GROUDED COBBLE GUTTER

B300 B.M. 71 Spot on boulder 41ft. left Sta. 548+52 Elev. 2250.10
 B.M. 72 Spot on boulder 14ft. left Sta. 550+63 Elev. 2257.73
 B.M. 73 Spike in roof of 24" Maple 13ft. left Sta. 555+48 Elev. 2254.71
 B390 B.M. 74 Spike in roof of 12" Maple 14ft. left Sta. 560+90 Elev. 2272.56



WOOD GUARD RAIL		GUIDE POSTS OF WOOD		CABLE GUARD RAIL			
STATION	LEFT RIGHT	STATION	LEFT RIGHT	STATION	LEN. LENS. CABLE PLYLENE		
568+27	24'	564+03	~	570+00	48'	40'	88'
575+40	24'	568+27	~				
579+93	24'	575+40	~				
		578+14	~				

STATE ROAD STATE ROAD SHEET NO. 105 M 1932 II 33



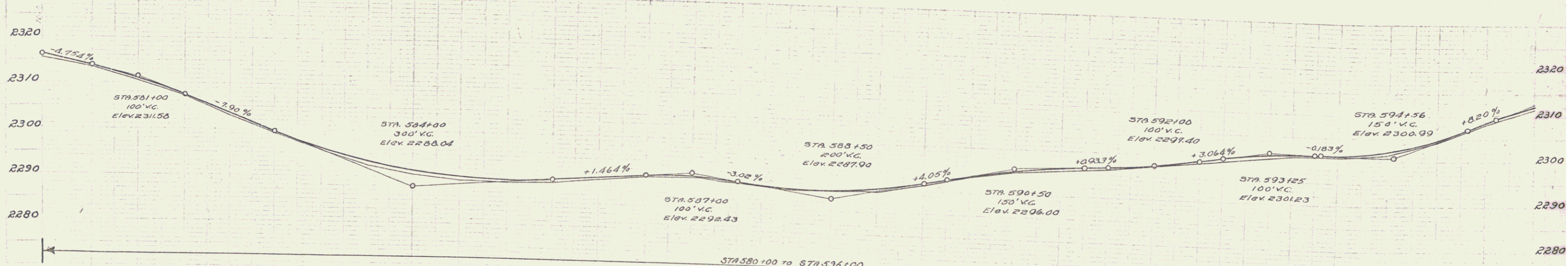
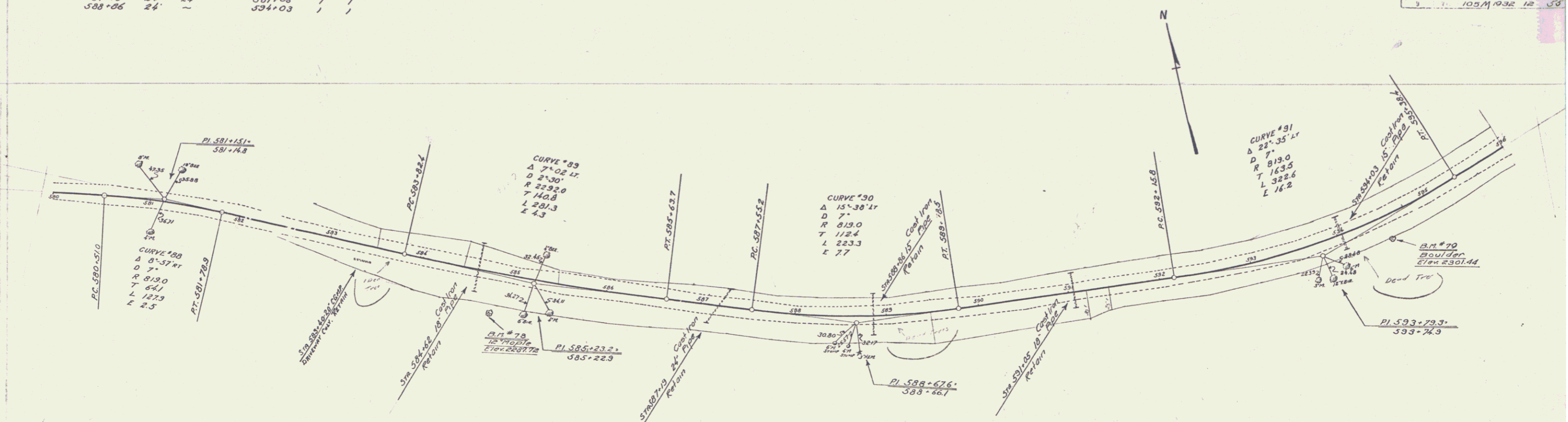
STATION	ELEVATION	STATION	ELEVATION	STATION	ELEVATION	STATION	ELEVATION	STATION	ELEVATION
564	2296.2	565	2300.10	566	2304.45	567	2308.25	568	2312.25
569	2316.4	570	2321.6	571	2327.9	572	2334.7	573	2341.9
574	2348.6	575	2356.7	576	2365.6	577	2375.4	578	2385.1
579	2395.0	580	2404.8						

B.M. 75 Spot on Boulder 71 ft left Sta. 565+80 Elev. 2293.69
 B.M. 76 Spot on Boulder 25.5 ft left Sta. 571+07 Elev. 2337.13
 B.M. 77 Spike in root of 20' Maple 17 ft right Sta. 579+17 Elev. 2328.13

SERIES B NO 105 M
 SHEET 11 OF 55

WOOD GUARD RAIL			GUIDE POSTS OF WOOD		
STATION	LEFT	RIGHT	STATION	LEFT	RIGHT
584+52	24'	24'	588+86	1	1
587+19	24'	24'	591+05	1	1
588+06	24'	24'	594+03	1	1

103 M 1932 12 58



Station	Elevation	Station	Elevation	Station	Elevation
580	2310.5	585	2288.0	590	2296.0
150	2310.3	150	2287.8	150	2295.8
100	2310.1	100	2287.6	100	2295.6
50	2309.9	50	2287.4	50	2295.4
0	2309.7	0	2287.2	0	2295.2
50	2309.5	50	2287.0	50	2295.0
100	2309.3	100	2286.8	100	2294.8
150	2309.1	150	2286.6	150	2294.6
200	2308.9	200	2286.4	200	2294.4
250	2308.7	250	2286.2	250	2294.2
300	2308.5	300	2286.0	300	2294.0
350	2308.3	350	2285.8	350	2293.8
400	2308.1	400	2285.6	400	2293.6
450	2307.9	450	2285.4	450	2293.4
500	2307.7	500	2285.2	500	2293.2
550	2307.5	550	2285.0	550	2293.0
600	2307.3	600	2284.8	600	2292.8
650	2307.1	650	2284.6	650	2292.6
700	2306.9	700	2284.4	700	2292.4
750	2306.7	750	2284.2	750	2292.2
800	2306.5	800	2284.0	800	2292.0
850	2306.3	850	2283.8	850	2291.8
900	2306.1	900	2283.6	900	2291.6
950	2305.9	950	2283.4	950	2291.4
1000	2305.7	1000	2283.2	1000	2291.2
1050	2305.5	1050	2283.0	1050	2291.0
1100	2305.3	1100	2282.8	1100	2290.8
1150	2305.1	1150	2282.6	1150	2290.6
1200	2304.9	1200	2282.4	1200	2290.4
1250	2304.7	1250	2282.2	1250	2290.2
1300	2304.5	1300	2282.0	1300	2290.0
1350	2304.3	1350	2281.8	1350	2289.8
1400	2304.1	1400	2281.6	1400	2289.6
1450	2303.9	1450	2281.4	1450	2289.4
1500	2303.7	1500	2281.2	1500	2289.2
1550	2303.5	1550	2281.0	1550	2289.0
1600	2303.3	1600	2280.8	1600	2288.8
1650	2303.1	1650	2280.6	1650	2288.6
1700	2302.9	1700	2280.4	1700	2288.4
1750	2302.7	1750	2280.2	1750	2288.2
1800	2302.5	1800	2280.0	1800	2288.0
1850	2302.3	1850	2279.8	1850	2287.8
1900	2302.1	1900	2279.6	1900	2287.6
1950	2301.9	1950	2279.4	1950	2287.4
2000	2301.7	2000	2279.2	2000	2287.2
2050	2301.5	2050	2279.0	2050	2287.0
2100	2301.3	2100	2278.8	2100	2286.8
2150	2301.1	2150	2278.6	2150	2286.6
2200	2300.9	2200	2278.4	2200	2286.4
2250	2300.7	2250	2278.2	2250	2286.2
2300	2300.5	2300	2278.0	2300	2286.0
2350	2300.3	2350	2277.8	2350	2285.8
2400	2300.1	2400	2277.6	2400	2285.6
2450	2299.9	2450	2277.4	2450	2285.4
2500	2299.7	2500	2277.2	2500	2285.2
2550	2299.5	2550	2277.0	2550	2285.0
2600	2299.3	2600	2276.8	2600	2284.8
2650	2299.1	2650	2276.6	2650	2284.6
2700	2298.9	2700	2276.4	2700	2284.4
2750	2298.7	2750	2276.2	2750	2284.2
2800	2298.5	2800	2276.0	2800	2284.0
2850	2298.3	2850	2275.8	2850	2283.8
2900	2298.1	2900	2275.6	2900	2283.6
2950	2297.9	2950	2275.4	2950	2283.4
3000	2297.7	3000	2275.2	3000	2283.2
3050	2297.5	3050	2275.0	3050	2283.0
3100	2297.3	3100	2274.8	3100	2282.8
3150	2297.1	3150	2274.6	3150	2282.6
3200	2296.9	3200	2274.4	3200	2282.4
3250	2296.7	3250	2274.2	3250	2282.2
3300	2296.5	3300	2274.0	3300	2282.0
3350	2296.3	3350	2273.8	3350	2281.8
3400	2296.1	3400	2273.6	3400	2281.6
3450	2295.9	3450	2273.4	3450	2281.4
3500	2295.7	3500	2273.2	3500	2281.2
3550	2295.5	3550	2273.0	3550	2281.0
3600	2295.3	3600	2272.8	3600	2280.8
3650	2295.1	3650	2272.6	3650	2280.6
3700	2294.9	3700	2272.4	3700	2280.4
3750	2294.7	3750	2272.2	3750	2280.2
3800	2294.5	3800	2272.0	3800	2280.0
3850	2294.3	3850	2271.8	3850	2279.8
3900	2294.1	3900	2271.6	3900	2279.6
3950	2293.9	3950	2271.4	3950	2279.4
4000	2293.7	4000	2271.2	4000	2279.2
4050	2293.5	4050	2271.0	4050	2279.0
4100	2293.3	4100	2270.8	4100	2278.8
4150	2293.1	4150	2270.6	4150	2278.6
4200	2292.9	4200	2270.4	4200	2278.4
4250	2292.7	4250	2270.2	4250	2278.2
4300	2292.5	4300	2270.0	4300	2278.0
4350	2292.3	4350	2269.8	4350	2277.8
4400	2292.1	4400	2269.6	4400	2277.6
4450	2291.9	4450	2269.4	4450	2277.4
4500	2291.7	4500	2269.2	4500	2277.2
4550	2291.5	4550	2269.0	4550	2277.0
4600	2291.3	4600	2268.8	4600	2276.8
4650	2291.1	4650	2268.6	4650	2276.6
4700	2290.9	4700	2268.4	4700	2276.4
4750	2290.7	4750	2268.2	4750	2276.2
4800	2290.5	4800	2268.0	4800	2276.0
4850	2290.3	4850	2267.8	4850	2275.8
4900	2290.1	4900	2267.6	4900	2275.6
4950	2289.9	4950	2267.4	4950	2275.4
5000	2289.7	5000	2267.2	5000	2275.2
5050	2289.5	5050	2267.0	5050	2275.0
5100	2289.3	5100	2266.8	5100	2274.8
5150	2289.1	5150	2266.6	5150	2274.6
5200	2288.9	5200	2266.4	5200	2274.4
5250	2288.7	5250	2266.2	5250	2274.2
5300	2288.5	5300	2266.0	5300	2274.0
5350	2288.3	5350	2265.8	5350	2273.8
5400	2288.1	5400	2265.6	5400	2273.6
5450	2287.9	5450	2265.4	5450	2273.4
5500	2287.7	5500	2265.2	5500	2273.2
5550	2287.5	5550	2265.0	5550	2273.0
5600	2287.3	5600	2264.8	5600	2272.8
5650	2287.1	5650	2264.6	5650	2272.6
5700	2286.9	5700	2264.4	5700	2272.4
5750	2286.7	5750	2264.2	5750	2272.2
5800	2286.5	5800	2264.0	5800	2272.0
5850	2286.3	5850	2263.8	5850	2271.8
5900	2286.1	5900	2263.6	5900	2271.6
5950	2285.9	5950	2263.4	5950	2271.4
6000	2285.7	6000	2263.2	6000	2271.2
6050	2285.5	6050	2263.0	6050	2271.0
6100	2285.3	6100	2262.8	6100	2270.8
6150	2285.1	6150	2262.6	6150	2270.6
6200	2284.9	6200	2262.4	6200	2270.4
6250	2284.7	6250	2262.2	6250	2270.2
6300	2284.5	6300	2262.0	6300	2270.0
6350	2284.3	6350	2261.8	6350	2269.8
6400	2284.1	6400	2261.6	6400	2269.6
6450	2283.9	6450	2261.4	6450	2269.4
6500	2283.7	6500	2261.2	6500	2269.2
6550	2283.5	6550	2261.0	6550	2269.0
6600	2283.3	6600	2260.8	6600	2268.8
6650	2283.1	6650	2260.6	6650	2268.6
6700	2282.9	6700	2260.4	6700	2268.4
6750	2282.7	6750	2260.2	6750	2268.2
6800	2282.5	6800	2260.0	6800	2268.0
6850	2282.3	6850	2259.8	6850	2267.8
6900	2282.1	6900	2259.6	6900	2267.6
6950	2281.9	6950	2259.4	6950	2267.4
7000	2281.7	7000	2259.2	7000	2267.2
7050	2281.5	7050	2259.0	7050	2267.0
7100	2281.3	7100	2258.8	7100	2266.8
7150	2281.1	7150	2258.6	7150	2266.6
7200	2280.9	7200	2258.4	7200	2266.4
7250	2280.7	7250	2258.2	7250	2266.2
7300	2280.5	7300	2258.0	7300	2266.0
7350	2280.3	7350	2257.8	7350	2265.8
7400	2280.1	7400	2257.6	7400	2265.6
7450	2279.9	7450	2257.4	7450	2265.4
7500	2279.7	7500	2257.2	7500	2265.2
7550	2279.5	7550	2257.0	7550	2265.0
7600	2279.3	7600	2256.8	7600	2264.8
7650	2279.1	7650	2256.6	7650	2264.6
7700	2278.9	7700	2256.4	7700	2264.4
7750	2278.7	7750	2256.2	7750	2264.2
7800	2278.5	7800	2256.0	7800	2264.0
7850	2278.3	7850	2255.8	7850	2263.8
7900	2278.1	7900	2255.6	7900	2263.6
7950	2277.9	7950	2255.4	7950	2263.4
8000	2277.7	8000	2255.2	8000	2263.2
8050	2277.5	8050	2255.0	8050	2263.0
8100	2277.3	8100	2254.8	8100	2262.8
8150	2277.1	8150	2254.6	8150	2262.6
8200	2276.9	8200	2254.4	8200	2262.4
8250	2276.7	8250	2254.2	8250	2262.2
8300	2276.5	8300	2254.0	8300	2262.0
8350	2276.3	8350	2253.8	8350	2261.8
8400	2276.1	8400	2253.6	8400	2261.6
8450	2275.9	8450	2253.4	8450	2261.4
8500	2275.7	8500			

WOOD GUARD RAIL

SECTION	LEFT	RIGHT
613+75	24	24

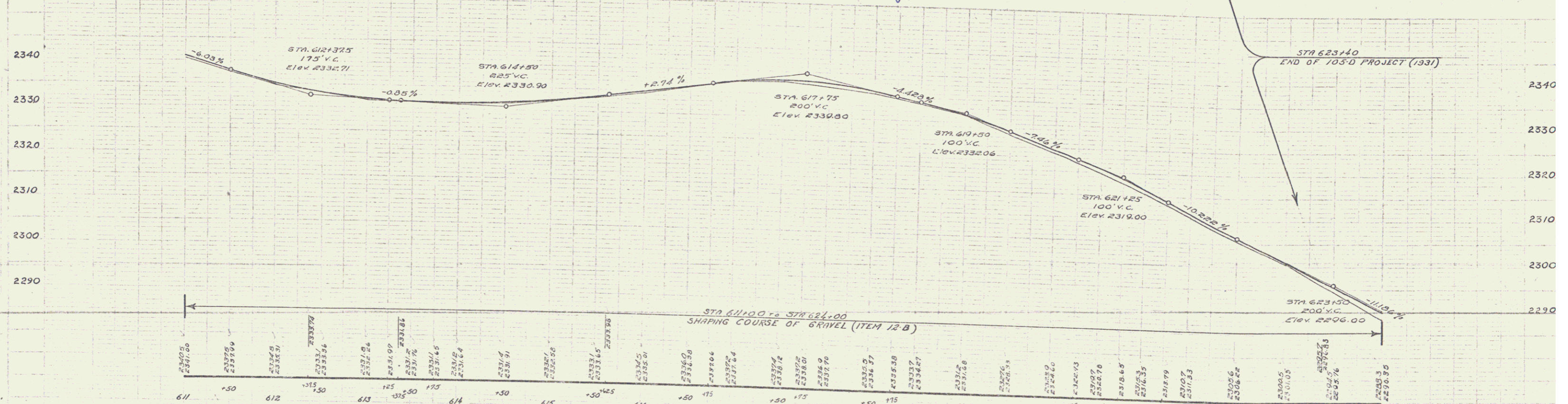
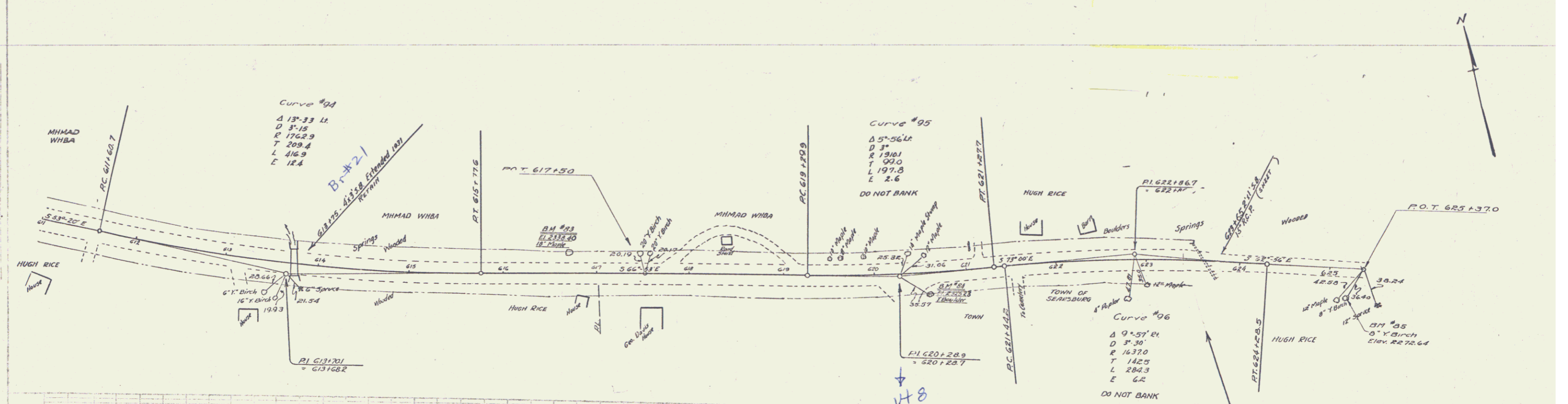
GUIDE POSTS OF WOOD

STATION	LEFT	RIGHT
623+65	7	7

REINFORCED CONCRETE PIPE CULVERTS

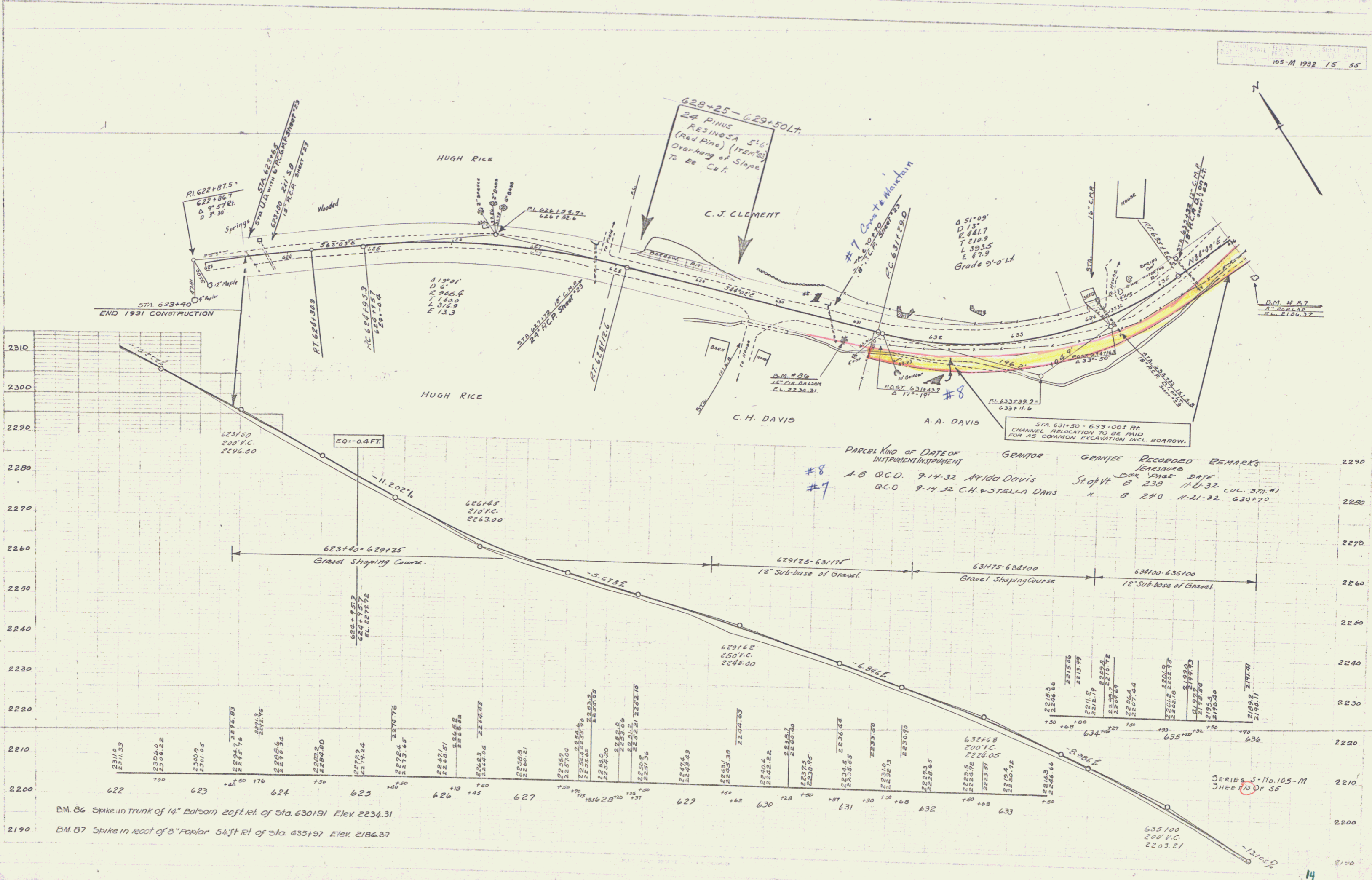
STATION	SIZE	LENGTH	C.R.M.
623+65	15"	32'	3.00K

105 M. STATE ROAD PROJECT FULL SHEET NO. 14
 105 M. STATE ROAD PROJECT FULL SHEET NO. 14



B.M. NO. B3 SPIKE IN ROOT OF 18" MAPLE 23 FT LEFT STA 616+71 ELEV. 2338+40
 B.M. NO. B4 SPOT ON BOULDER 23 FT RIGHT STA 620+36 ELEV. 2325+23
 B.M. NO. B5 SPIKE IN ROOT OF BIRCH 30 FT RIGHT STA 626+00 ELEV. 2272+64

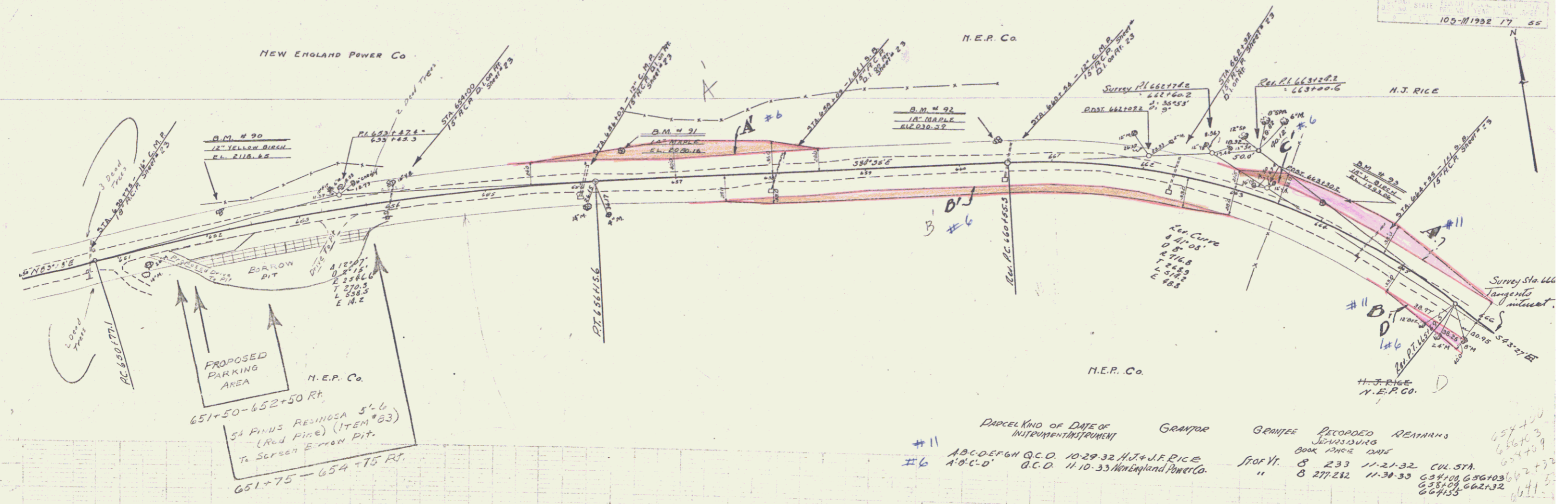
SERIES NO. 105.M
 SHEET 14 OF 14



PARCEL	KIND OF DATE OF INSTRUMENT	GRANTOR	GRANTEE	RECORDED	REMARKS
#8	A.B. R.C.D.	9-14-32	A. A. DAVIS	11-11-32	230
#7	R.C.D.	9-14-32	C.H. & STELLA DAVIS	11-21-32	240

BM 86 Spike in trunk of 14" Balsam 20ft. rel. of Sta. 630+91 Elev. 2234.31
 BM 87 Spike in root of 8" Poplar 54ft. rel. of Sta. 635+97 Elev. 2186.37

SERIES No. 105-M
 SHEET 15 OF 55

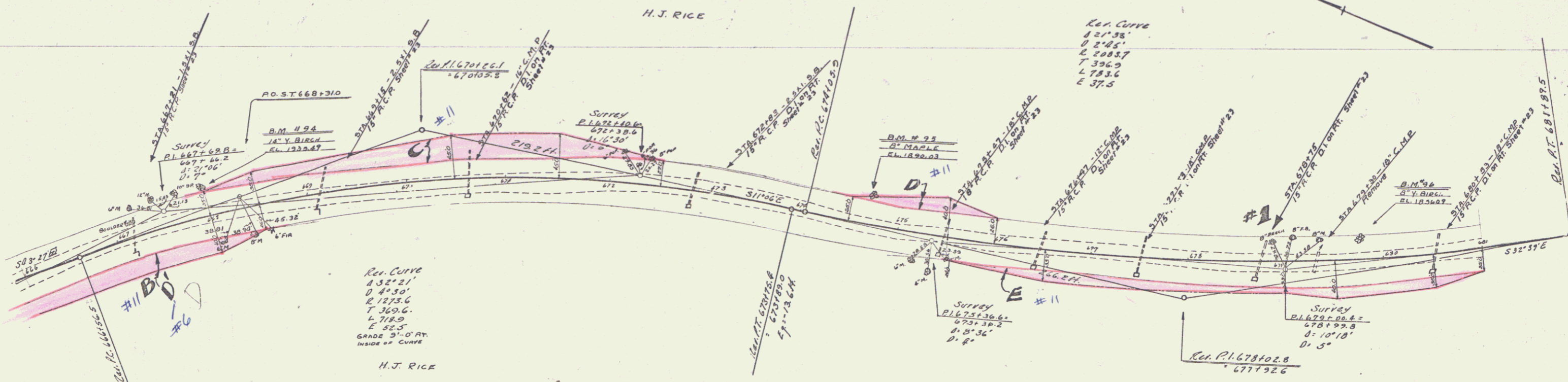


11/19
BARETT
1/1/24

11/19
BARETT
1/1/24

- B.M. 90, Spike in root-12" y. Bir. 19' Lt. Sta. 652+16 Elev. 2113.65
- B.M. 91, Spike in root-14" Maple 29' Lt. Sta. 656+41 Elev. 2090.16
- B.M. 92, Spike in root-16" Maple 23' Lt. Sta. 660+43 Elev. 2030.69
- B.M. 93, Spike in root-18" Bir. 20' Lt. Sta. 663+92 Elev. 1993.06

Parcel	Kind of Instrument	Date of Instrument	Grantor	Referee	Recorded	Remarks
#11	A.B.C.D.E.F.G.H	Q.C.D.	10-29-32	H.J. & J.F. RICE	8 233	11-21-32
#16	A'D'C'D	B.C.D.	11-10-33	New England Power Co.	8 277-282	11-30-33



- BM 94 Spike in root 14" dia. 27' Lt. Sta. 668+09 Elev. 1935.49
- BM 95 Spike in root 6" dia. 32' Lt. Sta. 674+67 Elev. 1890.03
- BM 96 Spike in root 8" dia. 22' Lt. Sta. 679+76 Elev. 1856.09

POOR ORIGINAL COPY



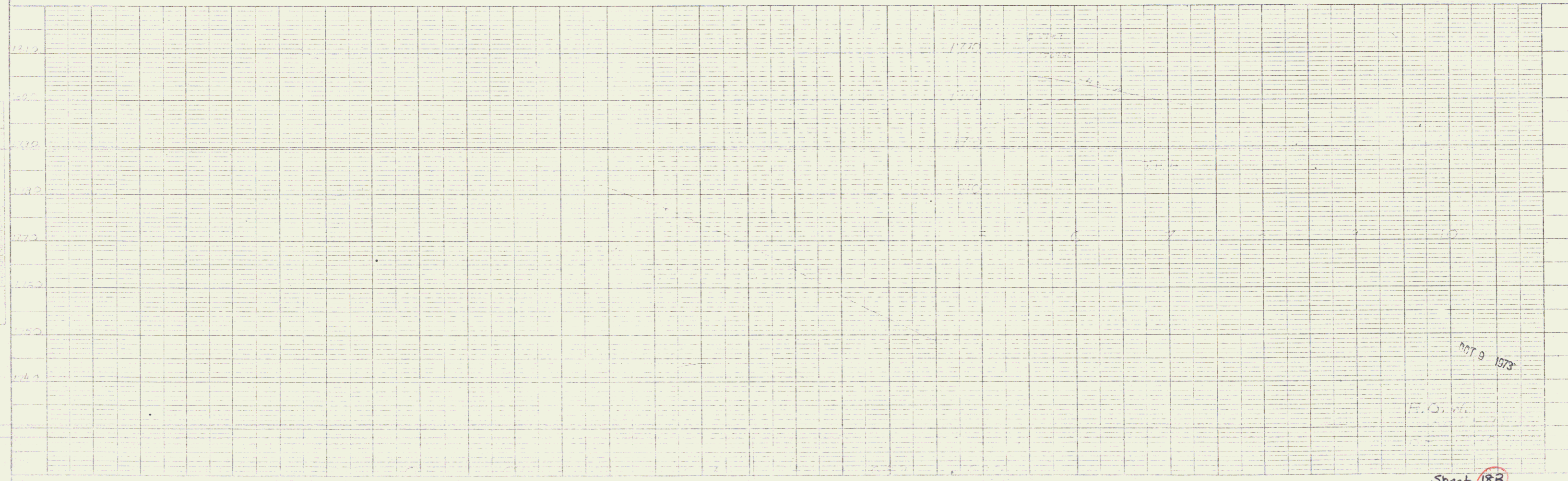
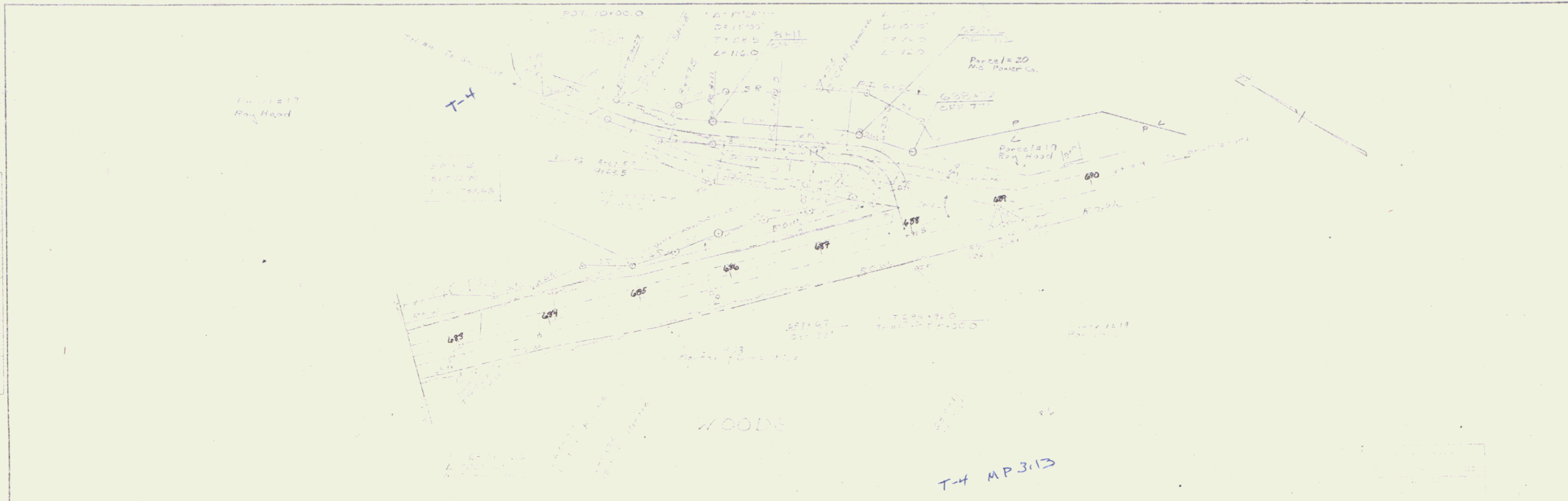
PLAN
 NORTH ARROW
 SCALE
 1" = 40'

PROFILE
 NORTH ARROW
 SCALE
 1" = 10'

NOT D. 1973
 P.O.W.

Sheet 128A

POOR ORIGINAL COPY



Sheet 188

19

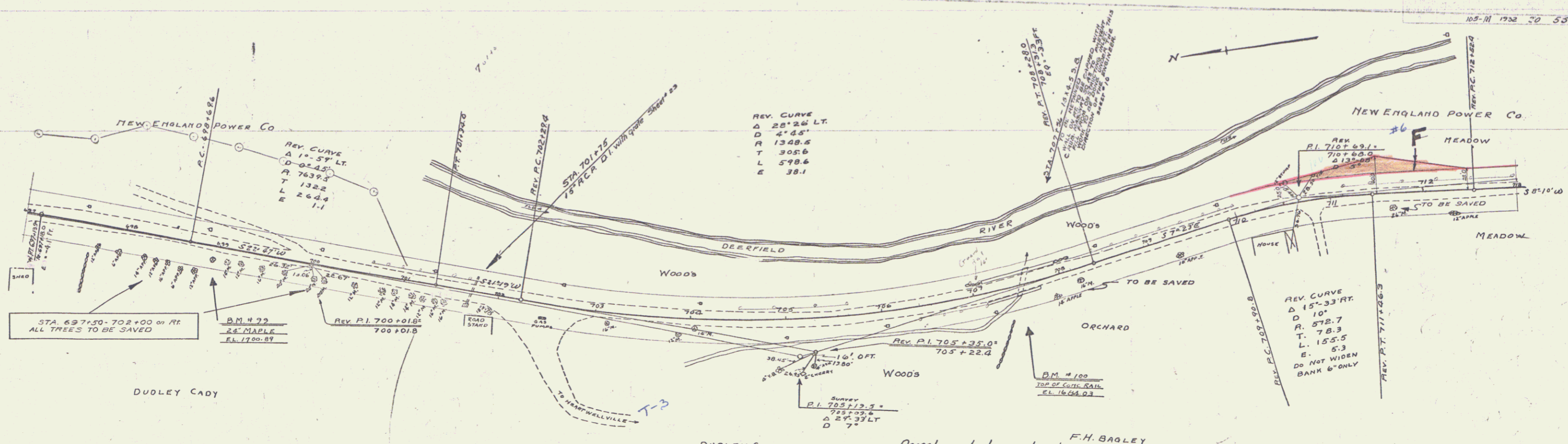
K-E PAUL L. KYLE ENGINEERING & SURVEYING CO.

PLAN
 DATE: 10/1/73
 DRAWN BY: [illegible]
 CHECKED BY: [illegible]

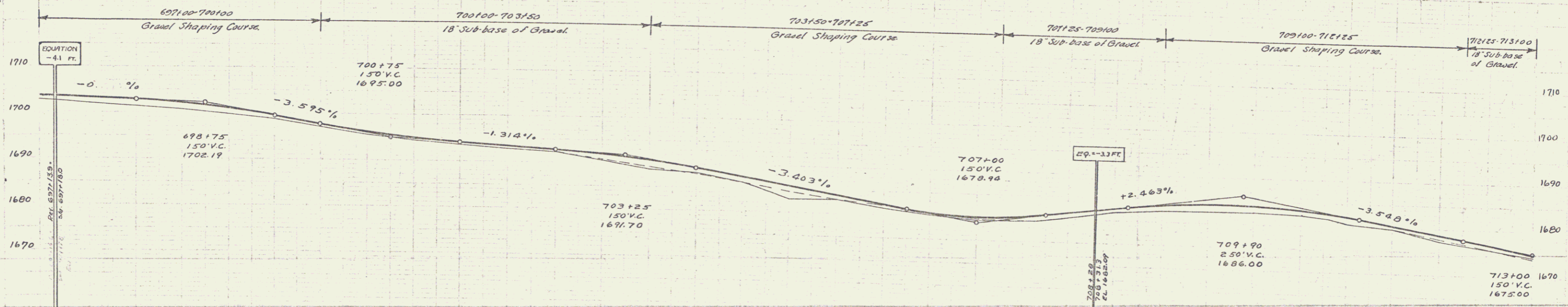
PROFILE
 DATE: 10/1/73
 DRAWN BY: [illegible]
 CHECKED BY: [illegible]

10/1/73

F.S.M.

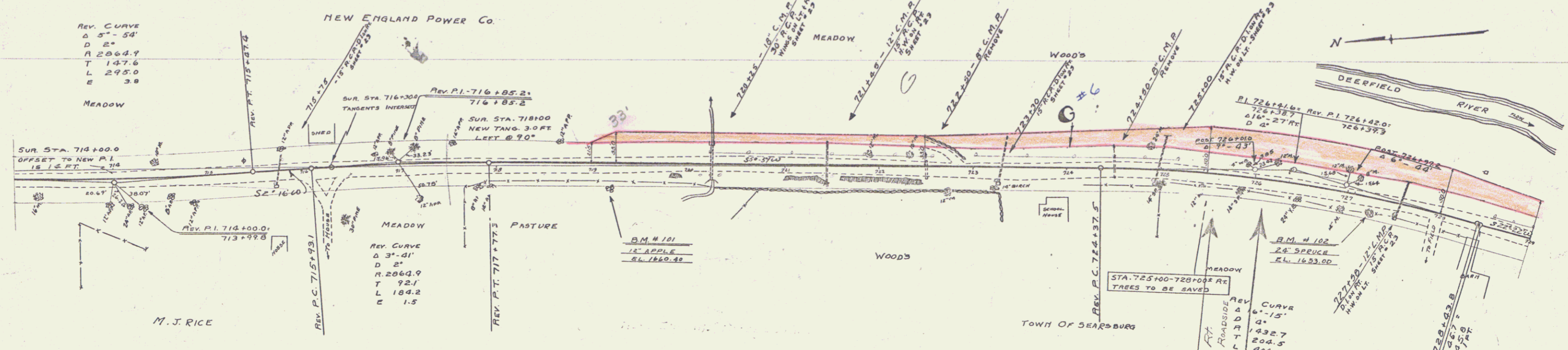


Parcel Instrument Date Grantor Grantee Recorded Remarks
 #6 F Q.C.D. 11-10-33 New England Power Co. Shop Rt. Searsburg Book Page Data cul. Sta.
 8 277282 1130.33 701+75

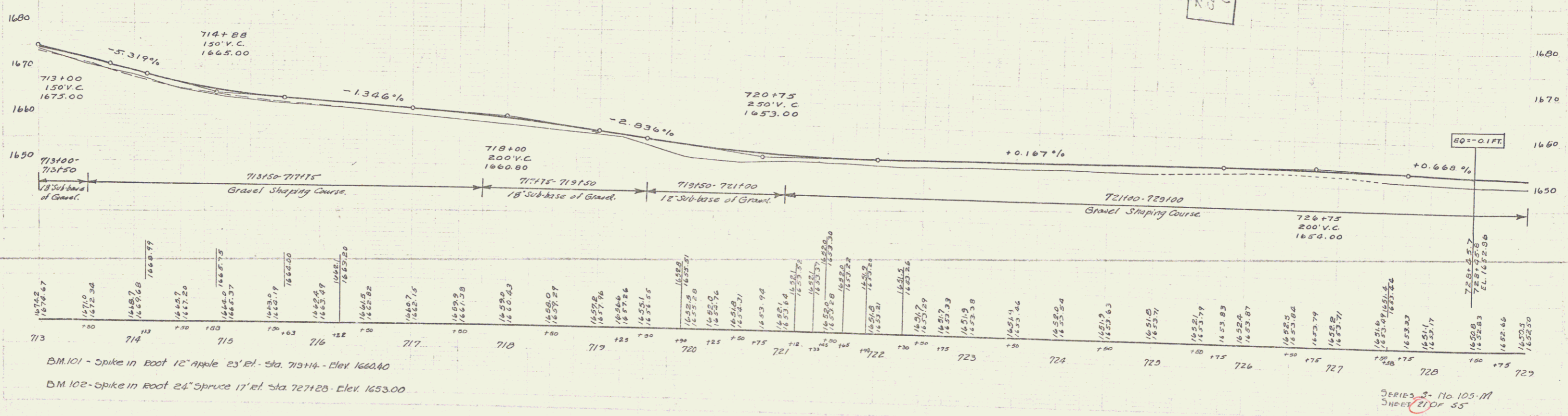


697	698	699	700	701	702	703	704	705	706	707	708	709	710	711	712	713
1702.74	1700.00	1702.81	1700.20	1702.09	1699.24	1697.16	1694.91	1692.68	1690.15	1687.45	1685.74	1683.04	1680.34	1677.64	1674.94	1672.24

B.M. 99 Spike in Root 24" Maple 14' el. Sta. 698+95 - Elev. 1700.89
 B.M. 100 Top conc. Rail Post 7' el. Sta. 707+58 - Elev. 1684.03

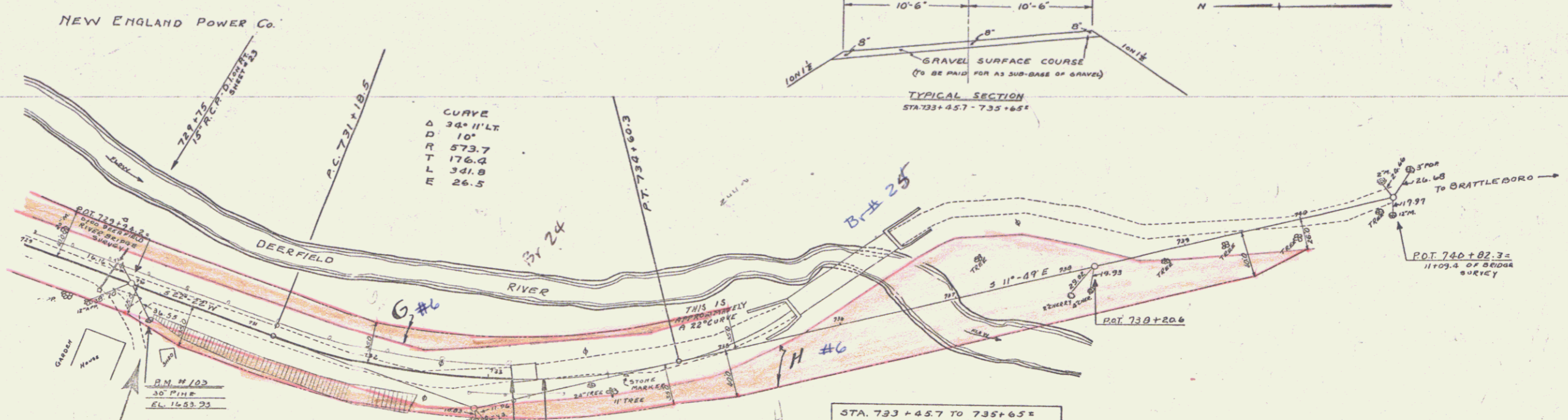


Parcel	Instrument Date	Grantor	Grantee	Recorded	Remarks
#6 G	Q.C.D. 11-10-33	New England Power Co.	St of W.	Searsburg Page Date 8 277 252 1130.33	cul. STA. 715+75, 723+30 725+04, 727+58



BM. 101 - Spike in Root 12" Apple 23' 21" Sta. 713+14 - Elev. 1660.40
 BM. 102 - Spike in Root 24" Spruce 17' 21" Sta. 727+25 - Elev. 1653.00

SERIES 3 - No. 105-M
 SHEET 21 OF 55



NEW ENGLAND POWER Co.

NEW ENGLAND POWER Co.

STATIONING: 730+00, 730+20, 731+00, 732+00, 733+00, 734+00, 735+00

BRIDGE GRADE EL 1633.93

729+100 - 733+17.7
18' Sub-base of Gravel

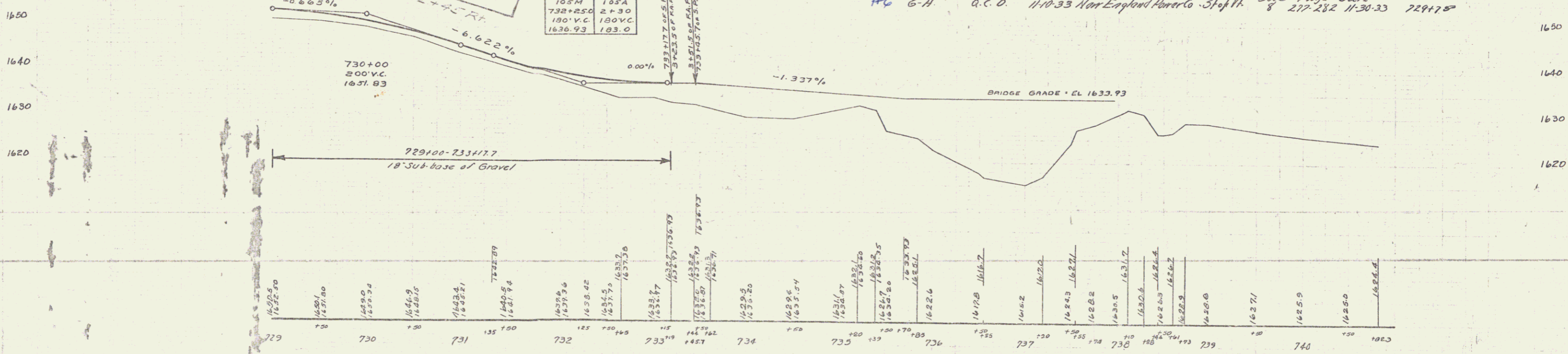
105M 105A
732+250 2+30
130' V.C. 130' V.C.
1636.93 163.0

STA. 733+17.7
END OF CONSTRUCTION
OF S.R. 105-M

STA. 733+17.7 - 733+45.7 OF S.R. 105-M
A 25 FT CLEAR SPAN T-BEAM
BRIDGE WITH LENGTH OVERALL OF
20 FT IS TO BE CONSTRUCTED AT
THIS LOCATION AS P.A.A. 105-A. THIS
BRIDGE IS INCLUDED IN CONTRACT
WITH S.R. 105-M, BUT NOT INCLUDED
IN LENGTH OF S.R. 105-M.

STA. 733+45.7 TO 735+65.7
CONSTRUCT AN 8" GRAVEL
SURFACE COURSE 21'-0" WIDE
BETWEEN BRIDGES. SEE TYPICAL
SECTION FOR THIS SECTION OF
ROADWAY ARE INCLUDED IN THE
S.R. 105-M QUANTITIES.
STA. 733+45.7 - 735+65.7 IS NOT
INCLUDED IN COMPUTATION OF
LENGTH OF S.R. 105-M.

Parcel	Instrument Data	Grantor	Grantee	Recorded	Remarks
PL 6-H	A.C.O.	11-10-33	New England Power Co. - Staff H.	Sealsburg Book Page data 8 277-282 11-30-33	cul. STA. 729+75



B.M. 103 - Spikes in roof 30' Pine 22' ft. Sta. 730+125 Elev. 1633.93

Series S - No. 105-M
Sheet 20 of 56