

WOOD GUARD RAIL

SECTION	LEFT	RIGHT
613+75	24	24

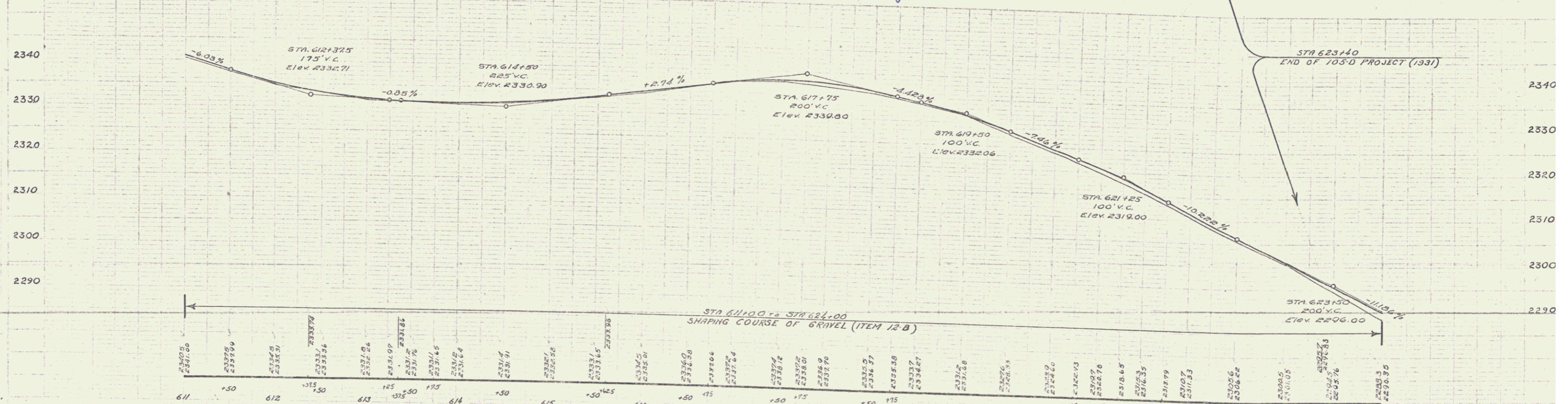
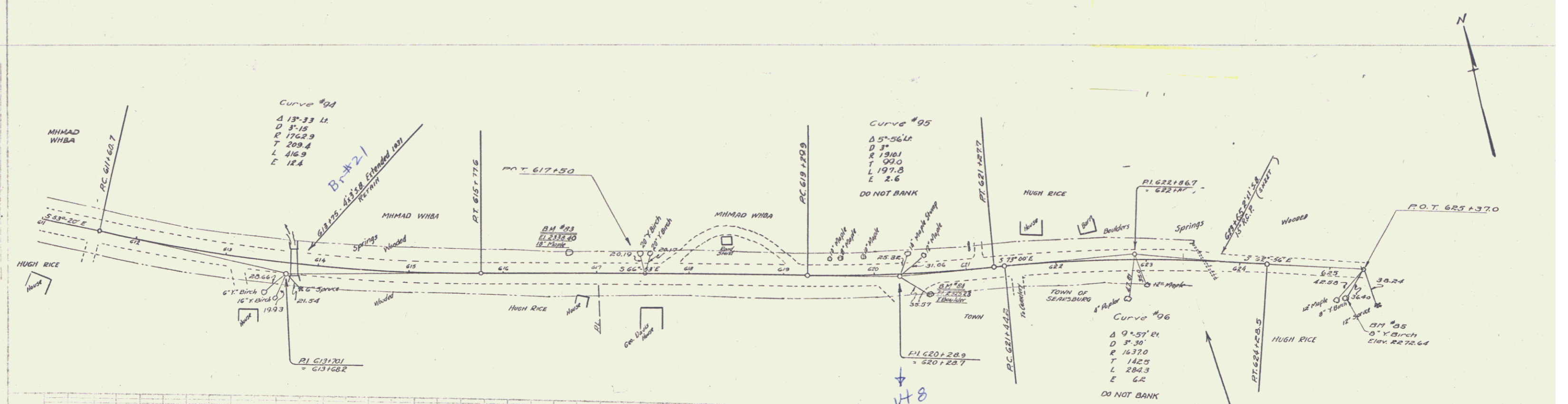
GUIDE POSTS OF WOOD

STATION	LEFT	RIGHT
623+65	7	7

REINFORCED CONCRETE PIPE CULVERTS

STATION	SIZE	LENGTH	C.R.M.
623+65	15"	32'	3.00x

105 M ROAD STATE ROAD FULL SHEET 105 M
 105 M ROAD STATE ROAD FULL SHEET 105 M
 105 M ROAD STATE ROAD FULL SHEET 105 M
 105 M ROAD STATE ROAD FULL SHEET 105 M



B.M. No. B3 SPIKE IN ROOT OF 18" MAPLE 23 FT LEFT STA 616+71 ELEV. 2338+40
 B.M. No. B4 SPOT ON BOULDER 23 FT RIGHT STA 620+36 ELEV. 2325+23
 B.M. No. B5 SPIKE IN ROOT OF BIRCH 30 FT RIGHT STA 626+00 ELEV. 2272+64

SERIES NO 105 M
 SHEET 14 OF