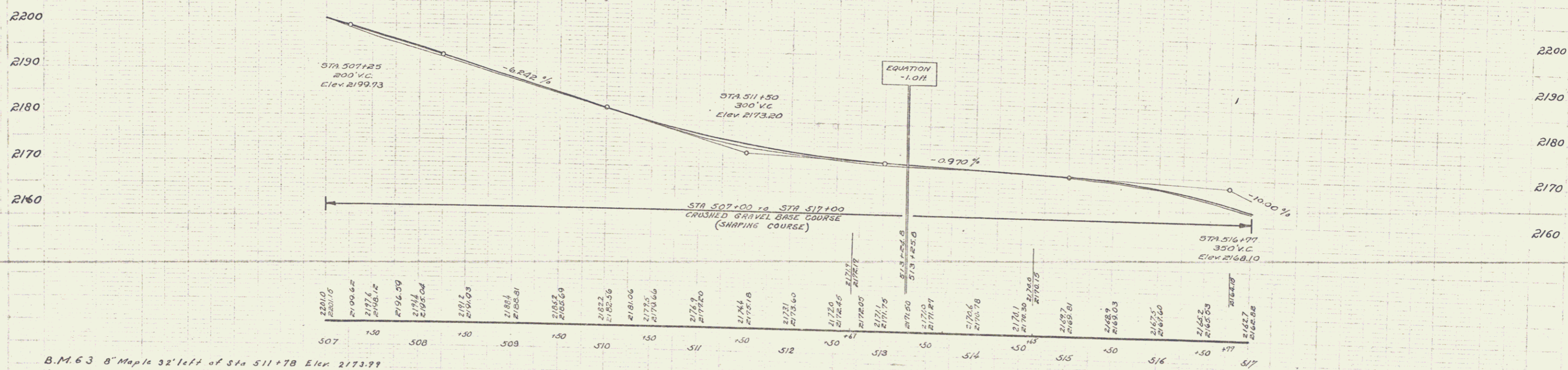
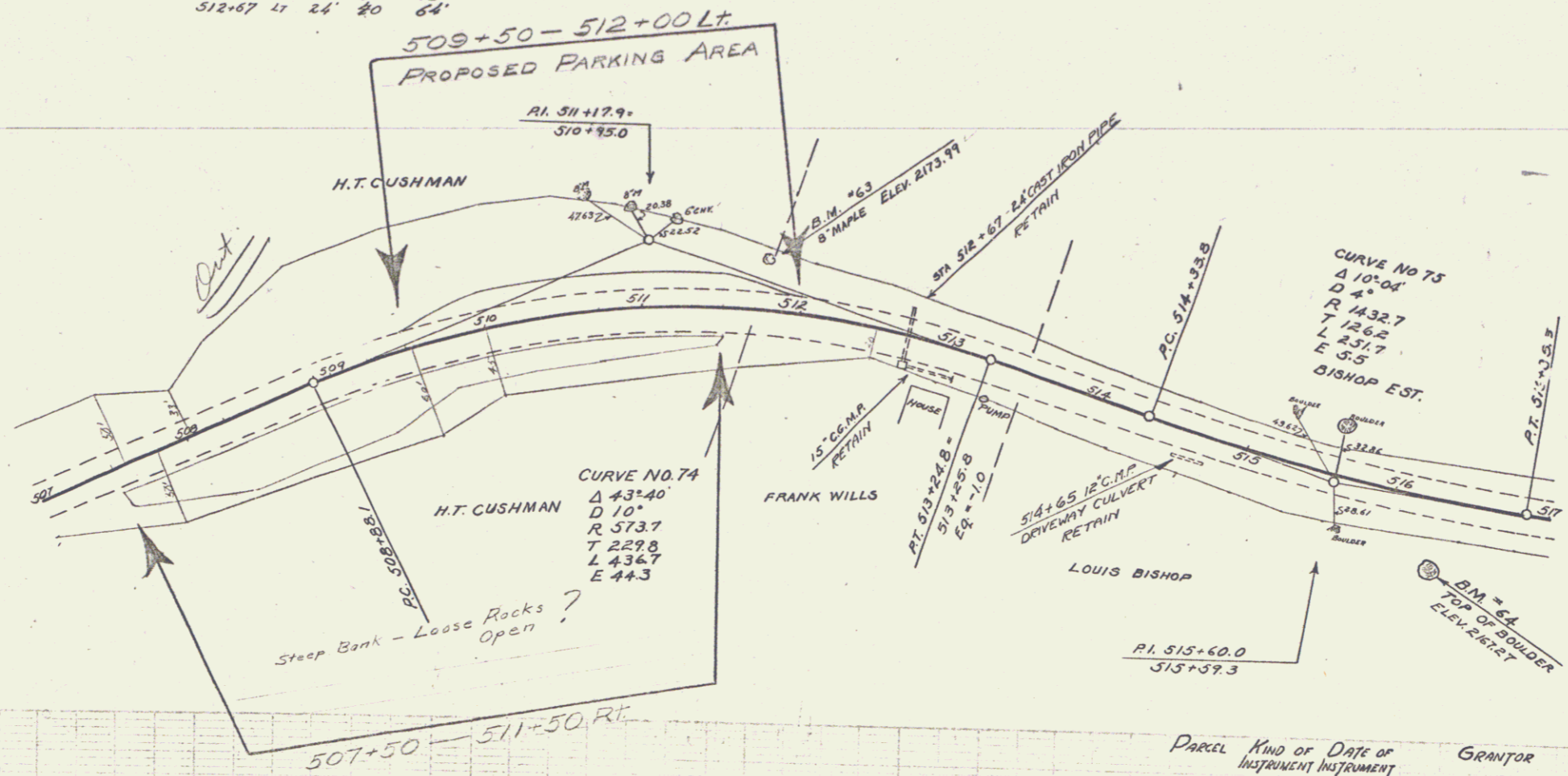


GUIDE POST OF WOOD		CABLE GUARD RAIL			
STATION	LEFT MENT	STA TO STA	LEN. CONST.	ANGLE	
512+67	1	507+00	507+25	25'	20' 45"
		507+00	507+25	25'	20' 45"
		512+67	512+20	24'	20' 64"

105 M 1832 7 5-5



B.M. 63 8" Maple 32' left of Sta 511+78 Elev 2173.99
 B.M. 64 Top of boulder 47th right of Sta 516+31 Elev 2167.27

SERIES S NO 105 M
 SHEET 6 OF 55