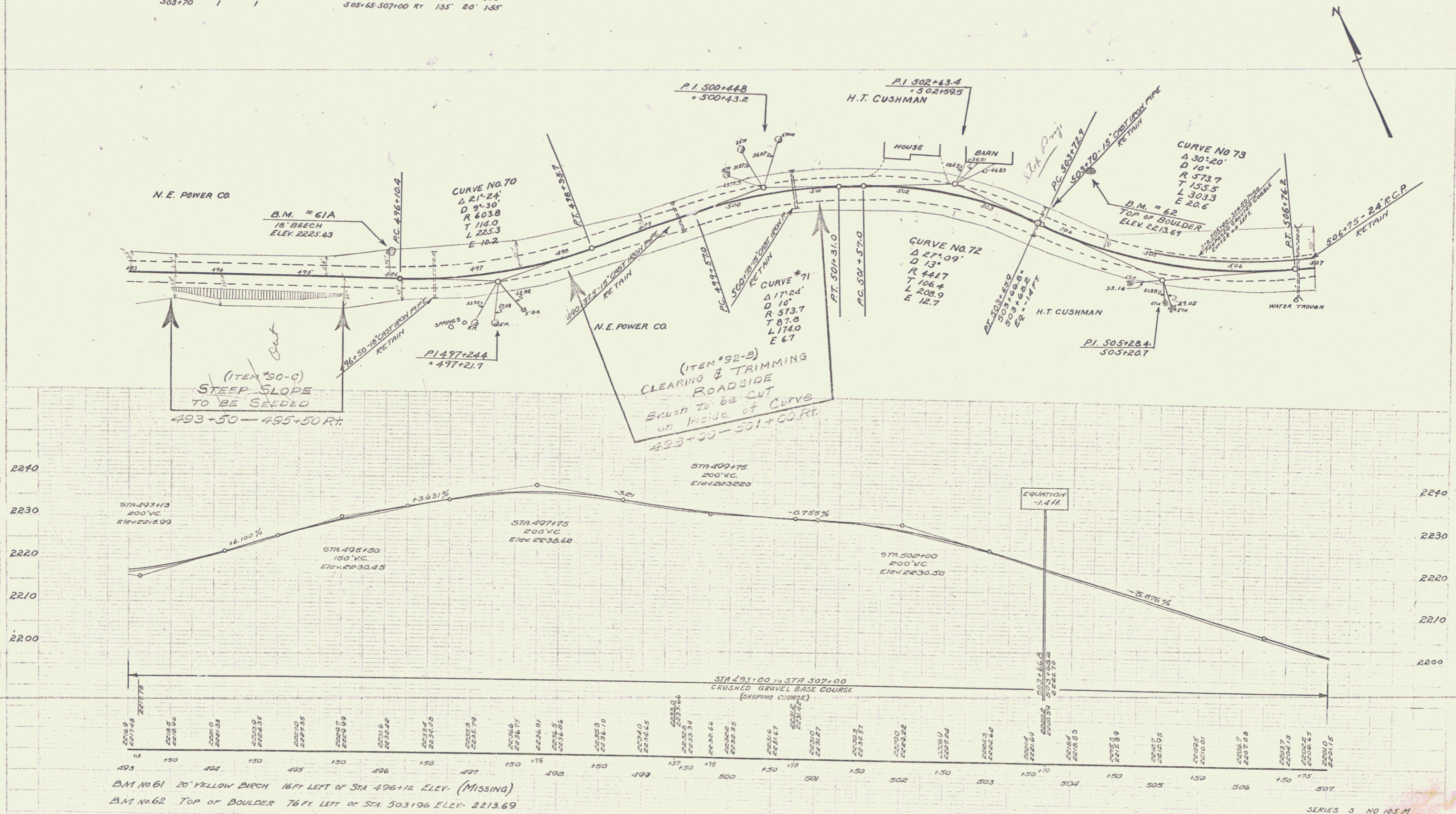


GUIDE POSTS OF WOOD		
STATION	LEFT	RIGHT
496+30	1	1
499+87	1	1
500+70	1	1
503+70	1	1

CABLE GUARD RAIL			
STA TO STA	LONG. CONC. PILE	PI	ANGLE
496+30	42	40'	38
500+70	48	40'	88
505+65-507+00	183	20'	203
505+65-507+00	135	20'	135

GROUTED COBBLE GUTTER			
STA TO STA	LONG. CONC. PILE	PI	ANGLE
505+00-507+00	200	3-0	56.6 days

105.M.1932 6 55



BM No 61 20" YELLOW BIRCH 16 FT LEFT OF STA 496+12 ELEV. (MISSING)
 BM No 62 TOP OF BOULDER 76 FT LEFT OF STA 503+96 ELEV. 2213.69

SERIES 3 NO 105.M
 SHEET 6 OF 55