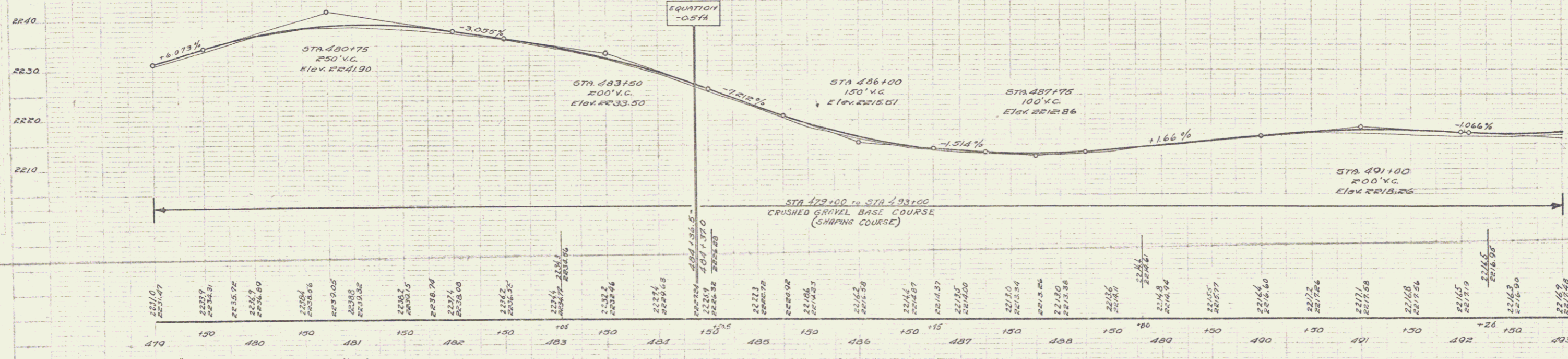
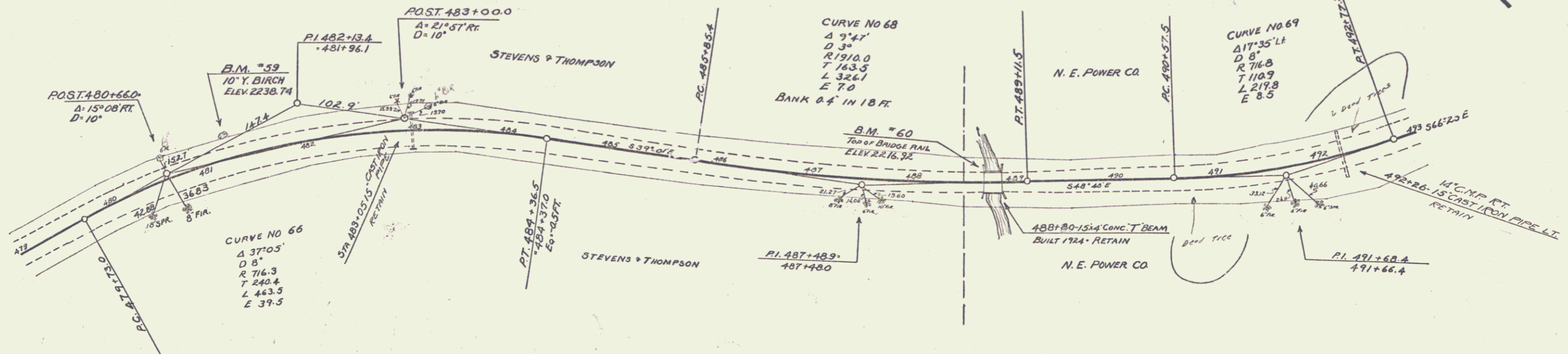


GUIDE POSTS OF WOOD		
STATION	LEFT	RIGHT
483+05	1	1
482+26	1	1

CABLE GUARD RAIL				
STATION	Loc. R.	LENGTH	CONST.	NO. Poles
483+78	1+5 R	36	80	776

FED. ROAD DIST. NO. STATE ROAD NO. COUNTY DIST. NO. SHEET NO.
 9 VT 105M 1932 5 55



B.M. #59 10' Yellow Birch, 24 ft left of STA 481+26, Elev. 2238.74
 B.M. #60 Top of Bridge Rail, 9.5 ft left of STA 488+70, Elev. 2216.92

SERIES S NO 105M
 SHEET 5 OF 55