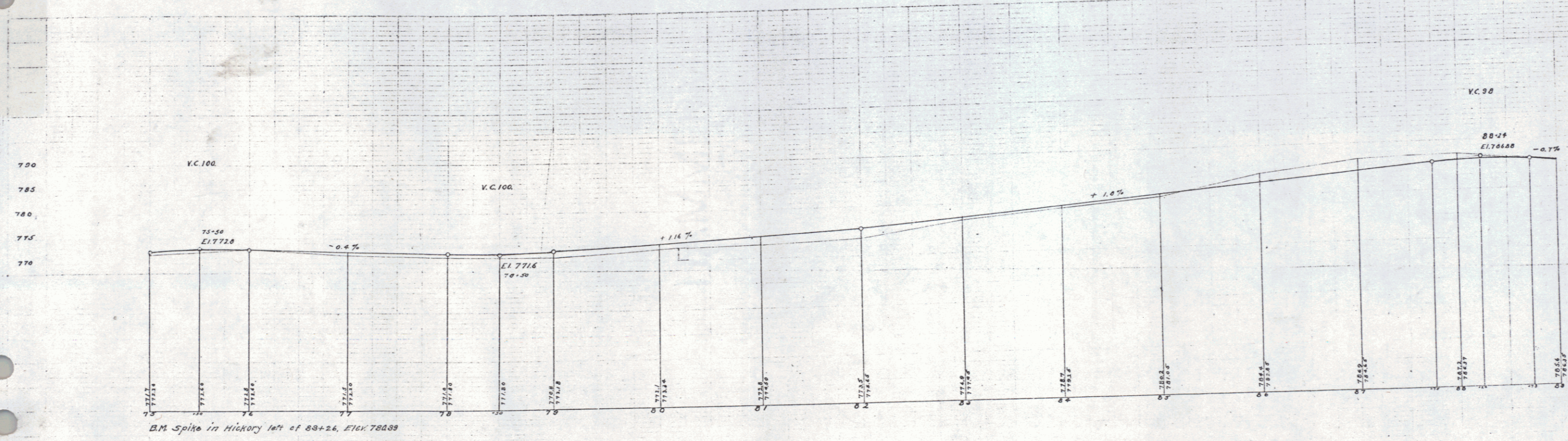
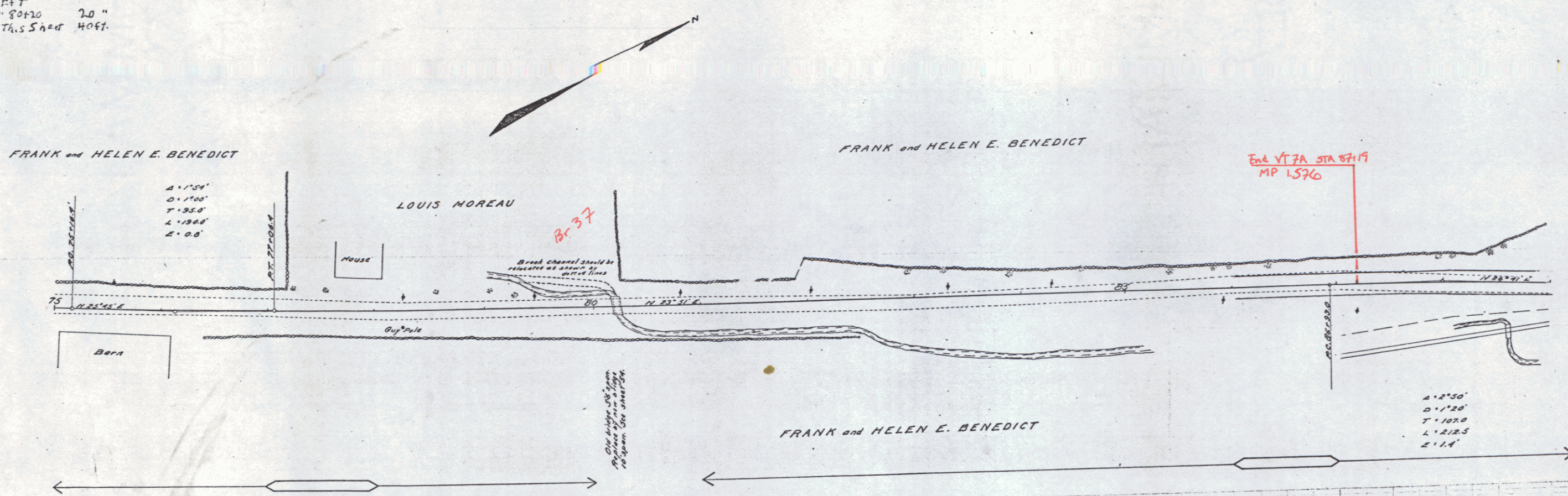


GUARD RAIL REQUIRED  
 ON RIGHT  
 STA 80+00 TO 80+20 449K LEFT  
 ON LEFT  
 80+00 " 80+20 2.0 "  
 TOTAL THIS SHEET HOFF.

FED. ROAD DIST. NO.	STATE	FED. AID PROJ. YEAR	SHEET NO.	TOTAL SHEETS
9	VT	72	142-24	9

L. D. BROWN  
 CIVIL ENGINEER  
 1912

W. S. GILMAN  
 CIVIL ENGINEER  
 1912



7  
 7