

- NO 1 TITLE PAGE
- 2 TYPICAL CROSS-SECTION OF IMPROVEMENT BITUMINOUS CONCRETE PAVEMENT,
- 3 QUANTITY SHEET (ITEMS) ITEM 351-B, MOD.
- 4 QUANTITY SHEET (WDM/MS)
- 5-7 EARTHWORK SHEETS
- 8-17 PLAN AND PROFILE SHEETS
- 18 BRIDGE SHEET (408+09.9) TYPICAL AND DETAILS
- 19 BRIDGE SHEET (408+65.9) REINFORCING STEEL SCHEDULE
- 20 BRIDGE SHEET (471+00.0) TYPICAL
- 21 BRIDGE SHEET (471+50.2) DETAILS OF ABUTMENTS NOS. 1 & 2
- 22 BRIDGE SHEET (471+50.2) SUPERSTRUCTURE DETAILS
- 23 EARTHWORK SHEET (BRIDGE) 471+50.2
- 24 BRIDGE SHEET (471+50.2) REINFORCING STEEL SCHEDULE
- 25 BRIDGE SHEET (496+25.2) TYPICAL AND DETAILS
- 26 BRIDGE SHEET (496+25.2) DETAILS OF ABUTMENTS NOS. 1 & 2
- 27 BRIDGE SHEET (496+25.2) SUPERSTRUCTURE DETAILS
- 28 EARTHWORK SHEET (BRIDGE) 496+25.2
- 29 BRIDGE SHEET (496+25.2) REINFORCING STEEL SCHEDULE
- 30 BRIDGE SHEET (523+30.2) LOCATION AND BARREL DETAILS
- 31 BRIDGE SHEET (523+30.2) APRON AND WING DETAILS
- 32 BRIDGE SHEET (523+30.2) REINFORCING STEEL SCHEDULE
- 33 STANDARD BRIDGE SHEET 59-20-56
- 34-35 STANDARD BRIDGE SHEETS 59-42-56'
- 36-37 STANDARD BRIDGE SHEETS 59-50-57
- 38 STANDARD BRIDGE SHEET 59-AS 15° SKEW-57
- 39 STANDARD BRIDGE SHEET 59-AS 30-57
- 40 STANDARD BRIDGE SHEET 50-21
- 41 A-GI (SLOPES IN SOLID ROCK)
- 42 B-1 (BANKING TABLES)
- 43 G-4 (STEEL MARKER POSTS)
- 44 J-1 (PROJECT MARKERS)
- 45 RS-56-4 (DRAINAGE)
- 46 RS-56-6 (TYPICAL SLOPE GRADING)
- 47 RS-56-11 (TYPICAL CABLE GUARD RAIL WITH STEEL POSTS)
- 48 RS-56-12 (GUARDRAILS, SIGNS AND LIGHTS)
- 49 RS-57-9 (UNDERDRAIN FLUSHING BASIN)
- 50-125 CROSS-SECTIONS
- 130-138 CHANNEL SECTIONS

STATE OF VERMONT  
DEPARTMENT OF HIGHWAYS

Proposed Improvement

TOWNS OF MANCHESTER-DORSET

COUNTY OF BENNINGTON

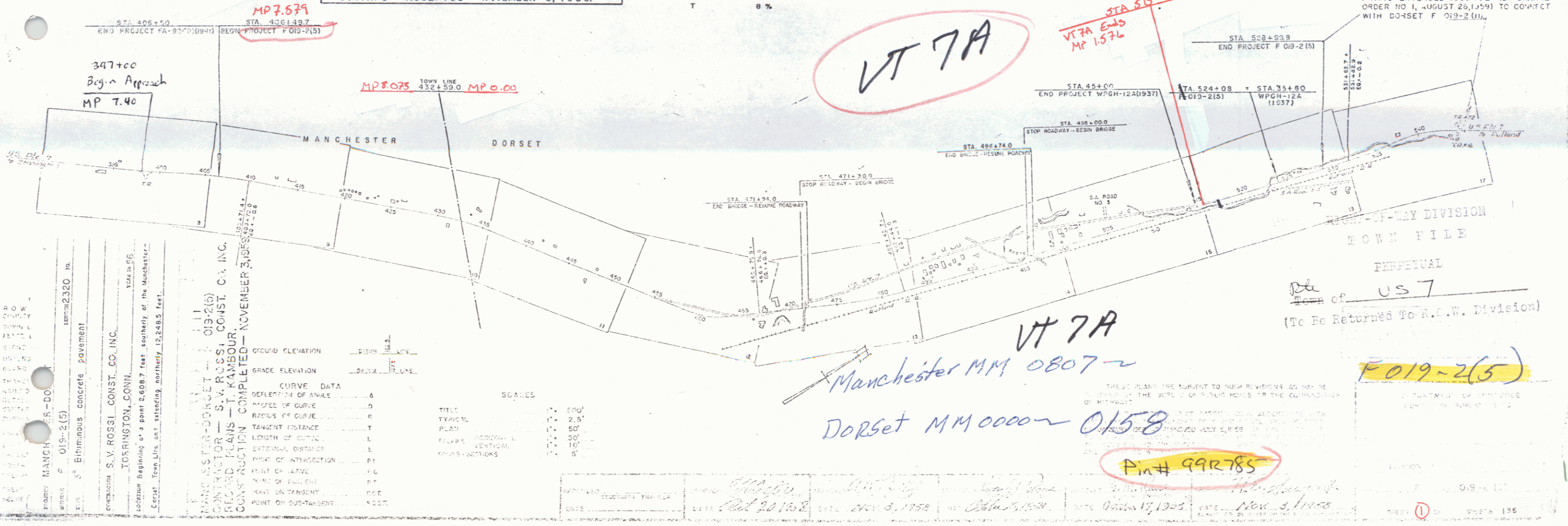
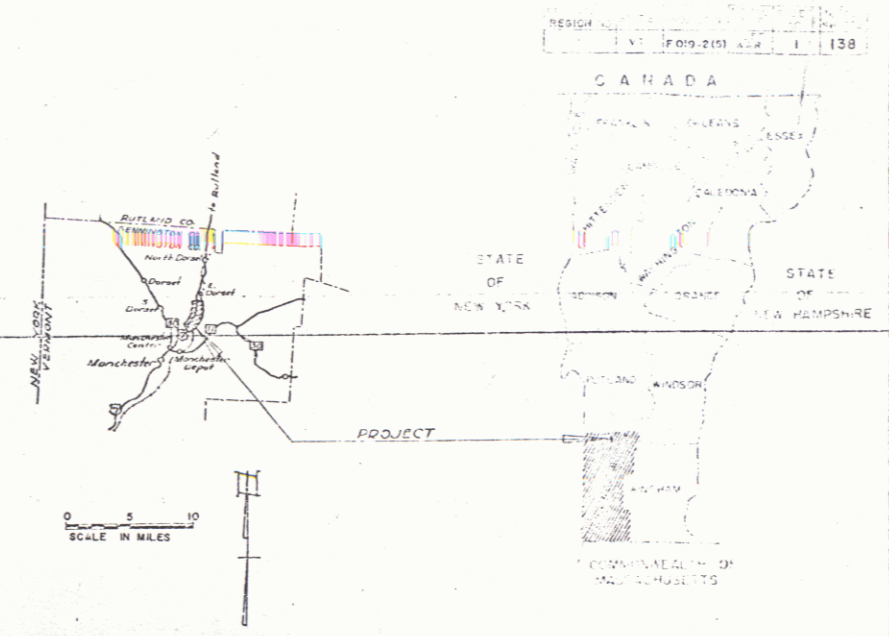
U.S. ROUTE 7 VT 7A

MANCHESTER - DANBY ROAD

PROJECT NAME & NUMBER TYPE PAVEMENT AREA  
MANCHESTER-DORSET F-019-2(5) 3" BIT. CONC. PAVE. 39,360 sq  
RECORD PLANS  
MATERIALS  
REINFC. CONC. PIPE - VERMONT CONCRETE PIPE CO. - WINDSOR, VT.  
ACCG. METAL PIPE - N.E. MET. CULV. CO. - WHITE RIVER JCT., VT.  
CEMENT - IRON CLAD CEMENT CO. - GLENS FALLS, N.Y.  
AGGREGATES & BIT. CONC. PAVE. - WEDDALEY, INC. - SOUTH FTSBURGH, VT.  
REINFC. STEEL S. GUARD RAIL CABLE - BETHLEHEM STEEL CO. - BETHLEHEM, PA.  
STRUCT. STEEL - VT. STRUCTURAL STEEL CO. - BURLINGTON, VT.  
TAR & ASPHALT - BARRETT CO. - EVERETT, MASS.  
GRAVEL - STREIBER & GUNTHER PIT - DORSET, VERMONT.  
PEA STONE - W.E. DAILEY, INC. - MANCHESTER, VERMONT.  
CONTRACTOR - S.V. ROSSI CONST. CO. INC.  
RESIDENT ENGINEER - T. KAMBOR.  
INSPECTOR - F. REED.  
RECORD PLANS - T. KAMBOR.  
CONTRACT DATED - DECEMBER 18, 1958.  
CONTRACT STARTED - MARCH 24, 1959.  
CONTRACT COMPLETED - NOVEMBER 3, 1959.  
CONTRACT ACCEPTED - NOVEMBER 3, 1959.

LENGTH OF ROADWAY 12,110.5 FEET = 2.294 MILES  
LENGTH OF BRIDGES 138.0 FEET = 0.026 MILE  
LENGTH OF PROJECT 12,248.5 FEET = 2.320 MILES

ADT 1955 2000  
ADT 1960 3300  
DHW 455  
D 60%  
T 8%



MANCHESTER-DORSET  
CONTRACTOR - S.V. ROSSI CONST. CO. INC.  
RESIDENT ENGINEER - T. KAMBOR  
INSPECTOR - F. REED  
RECORD PLANS - T. KAMBOR  
CONSTRUCTION COMPLETED - NOVEMBER 3, 1959

DEFLECTION OF ANGLE	4
DEFLECTION OF ANGLE	4
ANGLE OF CURVE	10
RADIUS OF CURVE	100
TANGENT DISTANCE	100
LENGTH OF CURVE	100
EXTERNAL DISTANCE	100
POINT OF INTERSECTION	100
POINT OF CURVE	100
POINT OF TANGENCY	100
POINT OF CURVATURE	100
POINT OF SUSPENSION	100

SCALE	1" = 100'
TITLE	1" = 100'
TYPICAL	1" = 25'
PLAN	1" = 50'
PROFILE	1" = 10'
VERTICAL	1" = 10'
CROSS-SECTIONS	1" = 5'

APPROVED: \_\_\_\_\_ DATE: Oct 20, 1958  
 CHECKED: \_\_\_\_\_ DATE: Nov 3, 1958  
 DESIGNED: \_\_\_\_\_ DATE: Oct 17, 1958  
 DRAWN: \_\_\_\_\_ DATE: Nov 3, 1958

457  
 PAVING EXTENDED 1350 FEET (BY CHANGE ORDER NO. 1, AUGUST 26, 1959) TO CORRECT WITH DORSET F 019-2(5).  
 TOWN FILE  
 PERPETUAL  
 (To Be Returned To R.C.W. Division)  
 F-019-2(5)  
 Pin# 99R785

THREE CABLE GUARD RAIL w/ STEEL POSTS  
 LT. 399+27-403+00  
 Removal + Disposal of Present Guard Rail  
 399+00-399+50 RT.  
 399+00-403+00 RT.  
 W/ PRESEVATIVE TREATMENT  
 399+27

Construct Approach  
 398+00 RT.  
 311+00  
 #1A NICHOLAS & ELEANOR LEMTUGOV  
 (A.O.12) STA 396+00-398+68.2  
 W.D.O.E. 12/16/58  
 RECORDED: MANCHESTER - BK 52 - PG 286 - 12/19/58

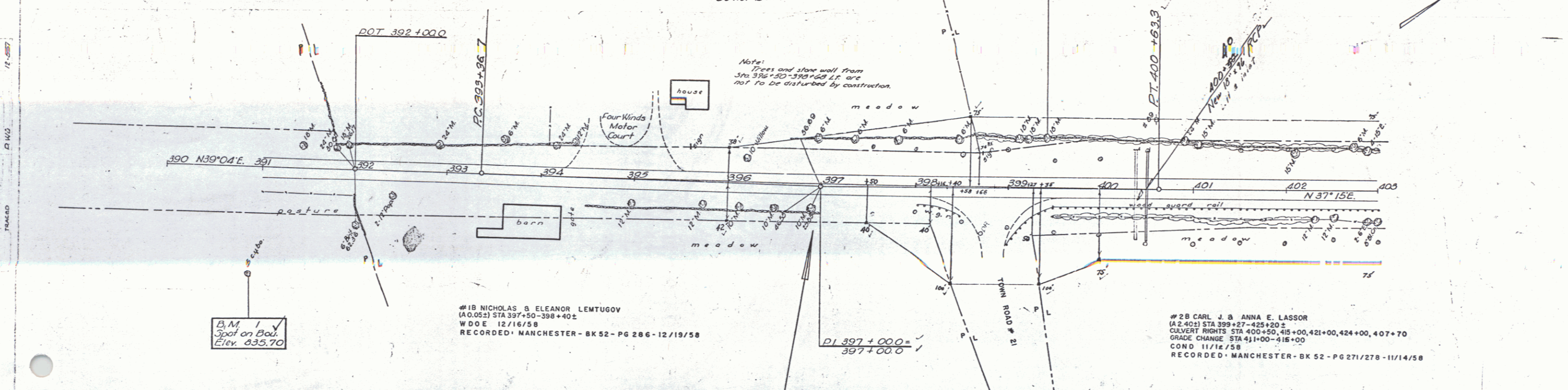
PRESENT ROW PURCHASED FROM H.P. WAY BY  
 W.D.O.E. 6-23-41 BK 41 PG 206 MANCHESTER L.R.  
 APR SUR. STA 391+76-399+71 C

PRESENT ROW ESTABLISHED BY F.A.R. 92 C (I) 1942  
 SUR. STA 391+00-409+50 LT. & RT.

$\Delta$  1° 49' 14" V  
 D 0' 15" V  
 R 229' 6.3"  
 T 363.3"  
 L 72.6"  
 E 29"  
 Do not Bank V

B.M. #2 V  
 51' 10" Maple  
 Elev. 831.52

#2A CARL J. & ANNA E. LASSOR  
 (A.100) STA 398+58-409+92  
 COND. 11/12/58  
 RECORDED: MANCHESTER - BK 52 - PG 271/278 - 11/14/58

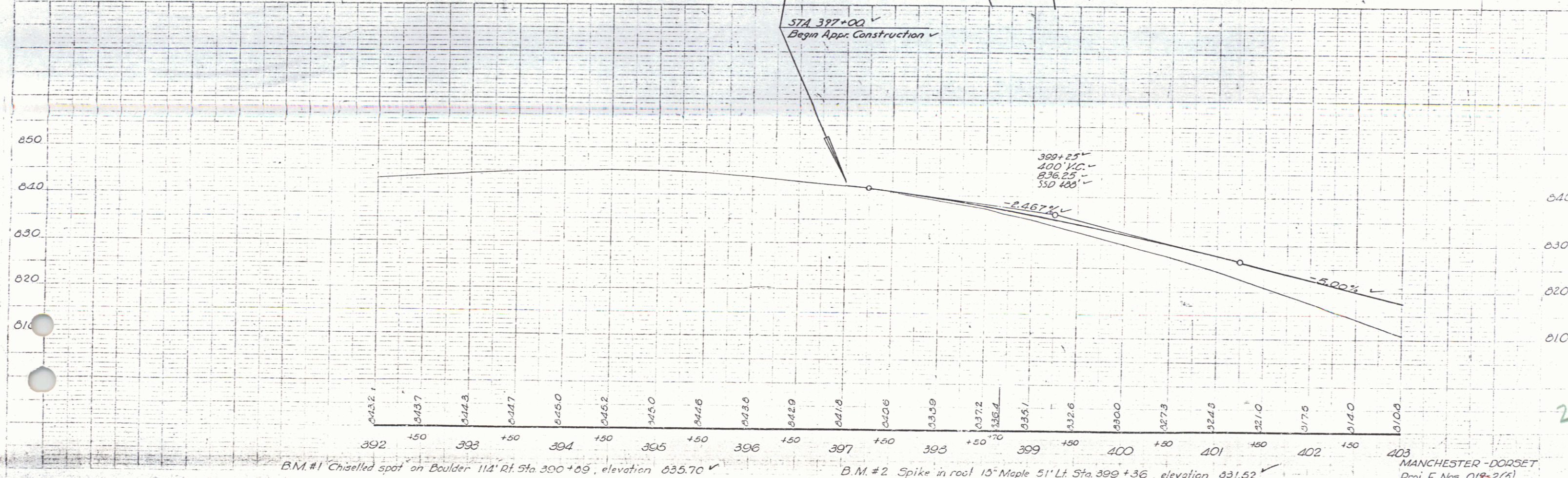


B.M. #1 V  
 Spot on Boulder  
 Elev. 835.70

#1B NICHOLAS & ELEANOR LEMTUGOV  
 (A.O.05) STA 397+50-398+40.2  
 W.D.O.E. 12/16/58  
 RECORDED: MANCHESTER - BK 52 - PG 286 - 12/19/58

PI 397+00.0  
 397+00.0

#2B CARL J. & ANNA E. LASSOR  
 (A.2.40) STA 399+27-425+20.2  
 CULVERT RIGHTS STA 400+50, 405+00, 421+00, 424+00, 407+70  
 GRADE CHANGE STA 41+00-416+00  
 COND. 11/12/58  
 RECORDED: MANCHESTER - BK 52 - PG 271/278 - 11/14/58



B.M. #1 Chiselled spot on Boulder 114' Rt. Sta 390+69, elevation 835.70

B.M. #2 Spike in root 15' Maple 51' Lt. Sta 399+36, elevation 831.52

MANCHESTER - DORSET  
 Proj. F. Nos. 01R-2(5)

Removal & Deposit of Present Guard Rail  
 LT. 402+50 - 403+00  
 403+00 - 403+50  
 403+50 - 404+00

PRESENT R.O.W. PURCHASED FROM C.J. LASSOR BY  
 W.D.G.E. 6/25/41 - BK 41 - PG 207 MANCHESTER  
 APP. SUR. STA 398+71 - 409+50

B.M. #3  
 Spot on headwall  
 Elev. 790.56

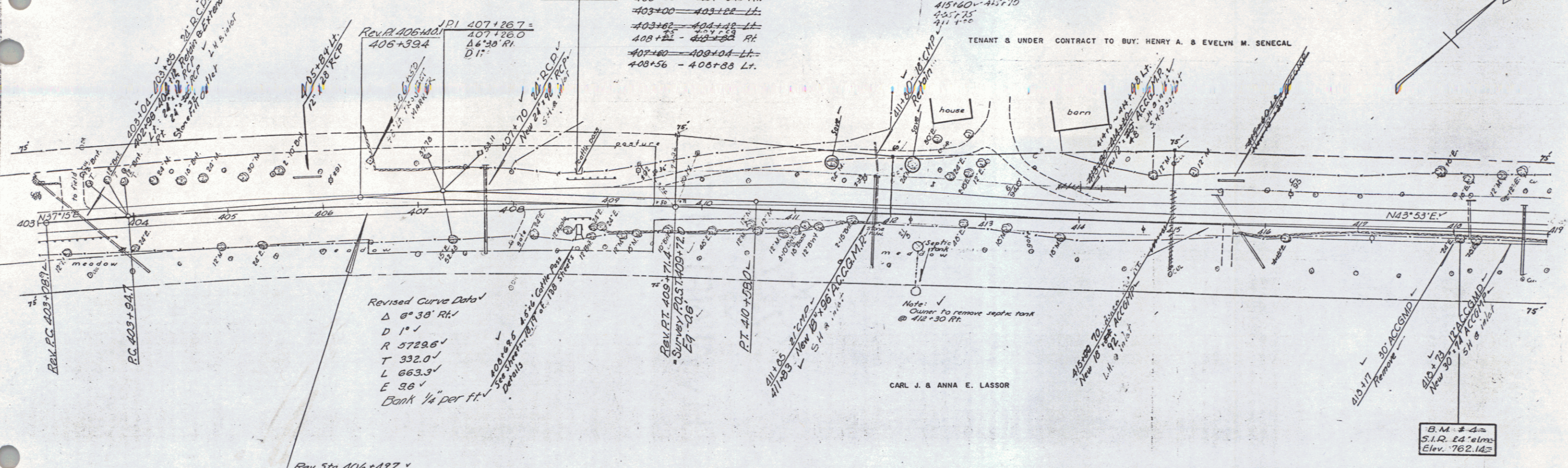
Three Cable Guard Rail with Steel Posts Item 543  
 403+00 - 403+50 Rt.  
 403+00 - 403+50 Lt.  
 403+50 - 404+00 Lt.  
 404+00 - 404+50 Rt.  
 404+50 - 405+00 Lt.  
 405+00 - 405+50 Lt.

Construct Drives  
 Lt. Rt.  
 403+40 - 403+10  
 404+00 - 403+40  
 405+00 - 405+70  
 405+75  
 406+15

CARL J. & ANNA E. LASSOR

FLANK GUARD RAIL W/PRESERVATIVE TREATMENT  
 413+30 - 413+70 LT.

TENANT & UNDER CONTRACT TO BUY: HENRY A. & EVELYN M. SENECALE

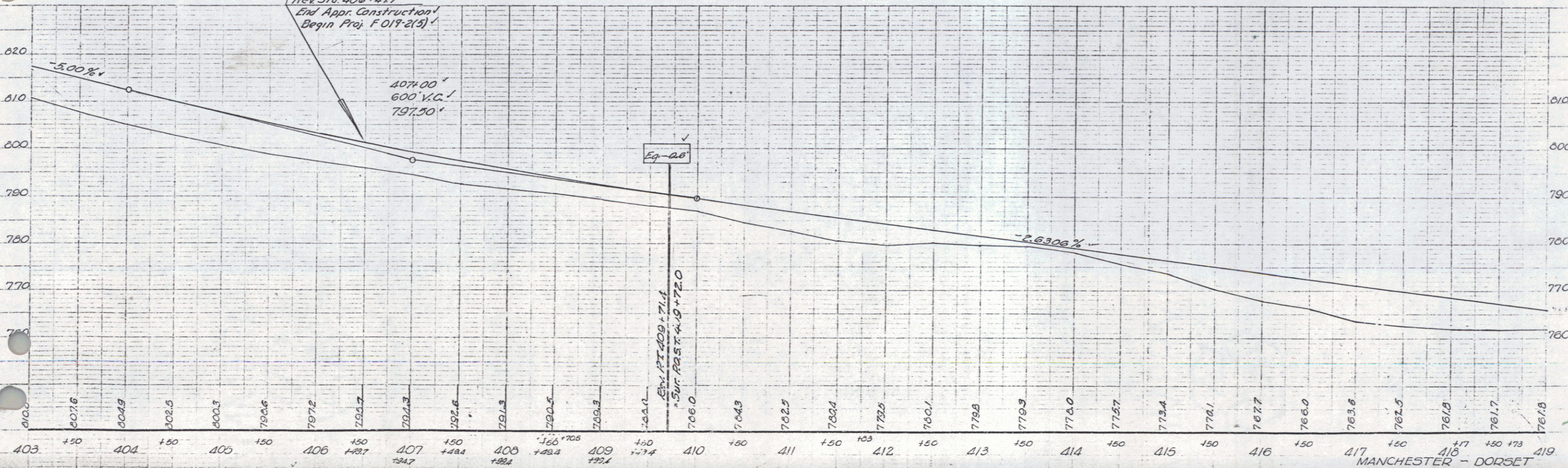


Revised Curve Data  
 $\Delta$  6° 30' Rt.  
 D 1°  
 R 572.6'  
 T 332.0'  
 L 663.3'  
 E 36'  
 Bank 1/4" per ft.

Rev Sta. 406+497  
 End Appr. Construction  
 Begin Proj. F 019-2(5)

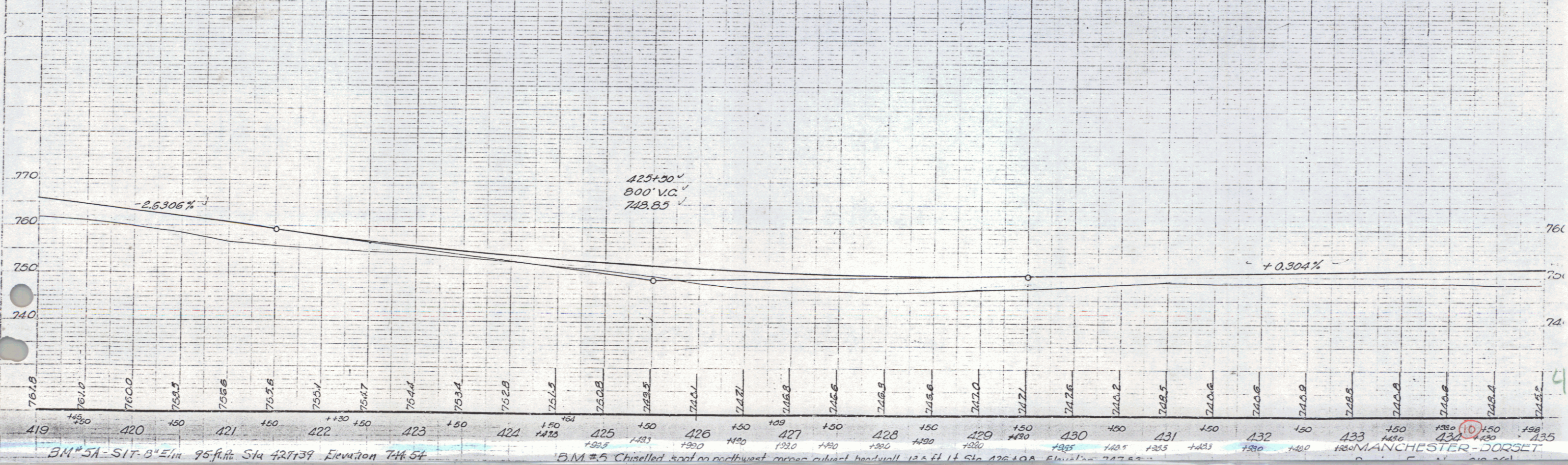
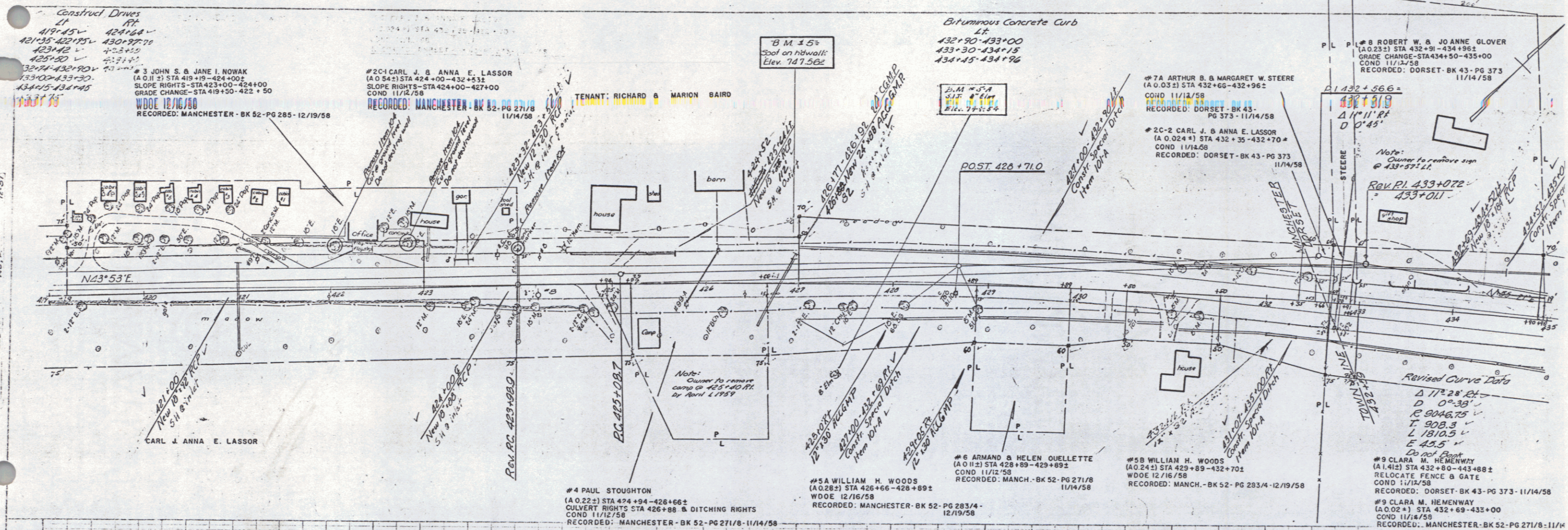
CARL J. & ANNA E. LASSOR

B.M. #4  
 S.I.R. 24' elm.  
 Elev. 762.14

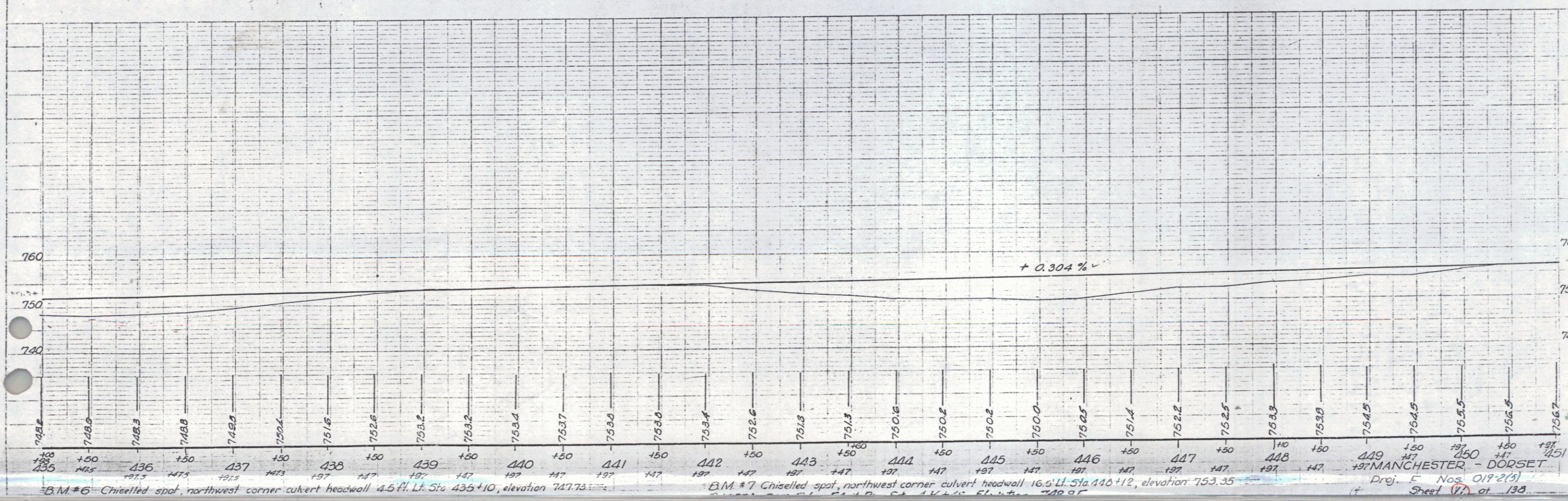
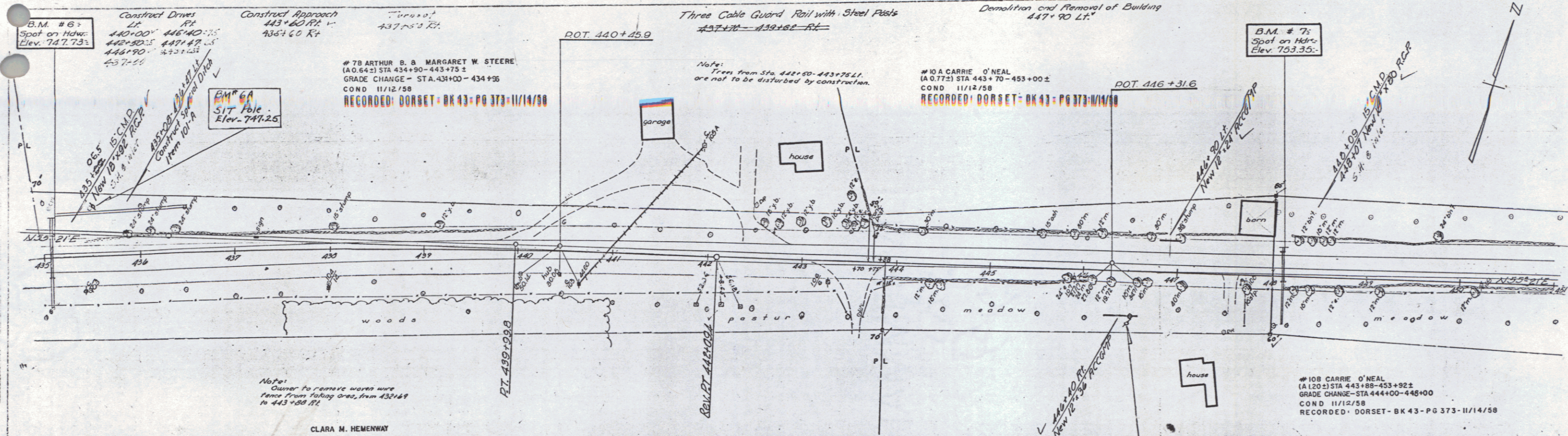


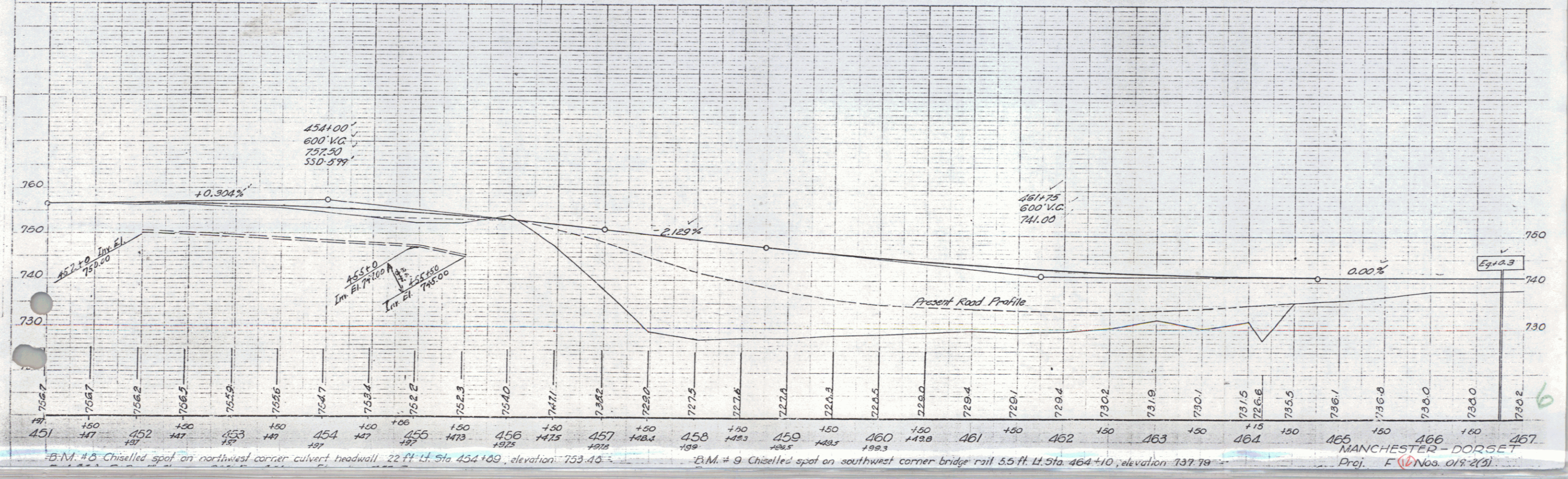
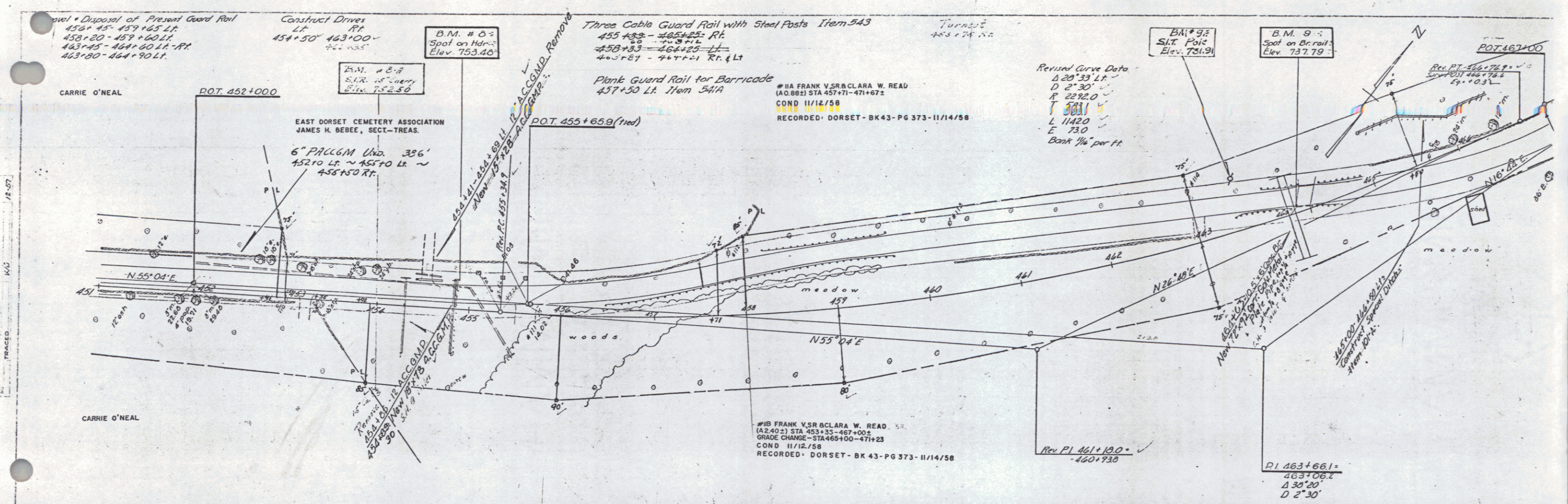
B.M. #3. Chiselled spot on west headwall cattle pass 24' left sta. 400+50, elevation 790.56. B.M. #4. Spike in roof 24' elm. 10.5 ft. Rt. Sta. 410+00, elevation 762.14.

MANCHESTER - DORSET  
 Proj. E. Nos. 017-2(1)  
 Sheet (9) of 138



10-57  
 11-57  
 12-57  
 13-57  
 14-57  
 15-57  
 16-57  
 17-57  
 18-57  
 19-57  
 20-57  
 21-57  
 22-57  
 23-57  
 24-57  
 25-57  
 26-57  
 27-57  
 28-57  
 29-57  
 30-57  
 31-57  
 32-57  
 33-57  
 34-57  
 35-57  
 36-57  
 37-57  
 38-57  
 39-57  
 40-57  
 41-57  
 42-57  
 43-57  
 44-57  
 45-57  
 46-57  
 47-57  
 48-57  
 49-57  
 50-57  
 51-57  
 52-57  
 53-57  
 54-57  
 55-57  
 56-57  
 57-57  
 58-57  
 59-57  
 60-57  
 61-57  
 62-57  
 63-57  
 64-57  
 65-57  
 66-57  
 67-57  
 68-57  
 69-57  
 70-57  
 71-57  
 72-57  
 73-57  
 74-57  
 75-57  
 76-57  
 77-57  
 78-57  
 79-57  
 80-57  
 81-57  
 82-57  
 83-57  
 84-57  
 85-57  
 86-57  
 87-57  
 88-57  
 89-57  
 90-57  
 91-57  
 92-57  
 93-57  
 94-57  
 95-57  
 96-57  
 97-57  
 98-57  
 99-57  
 100-57

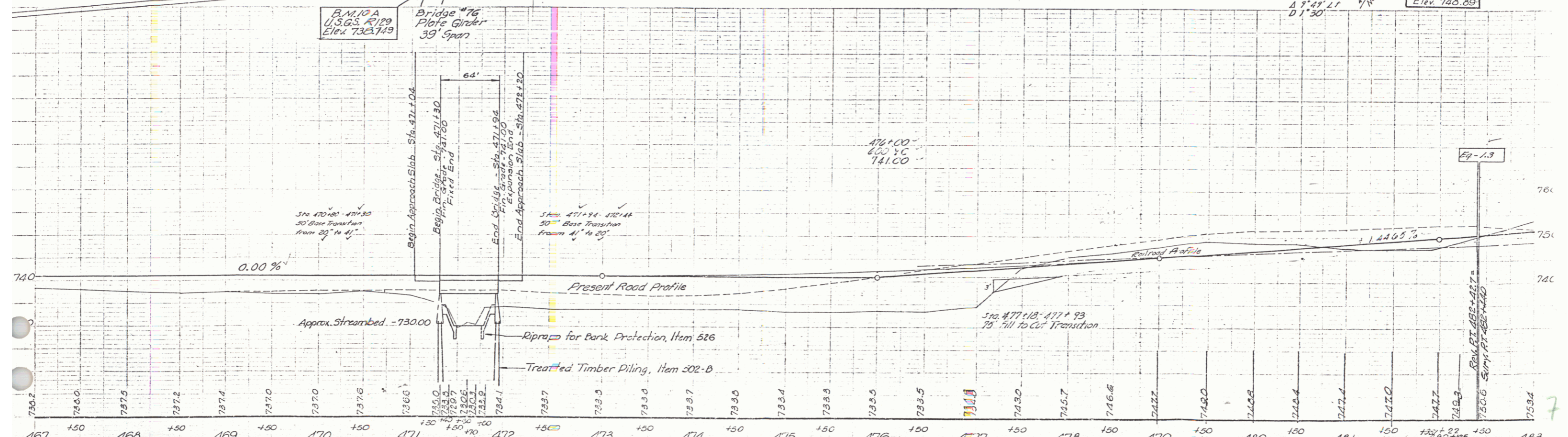
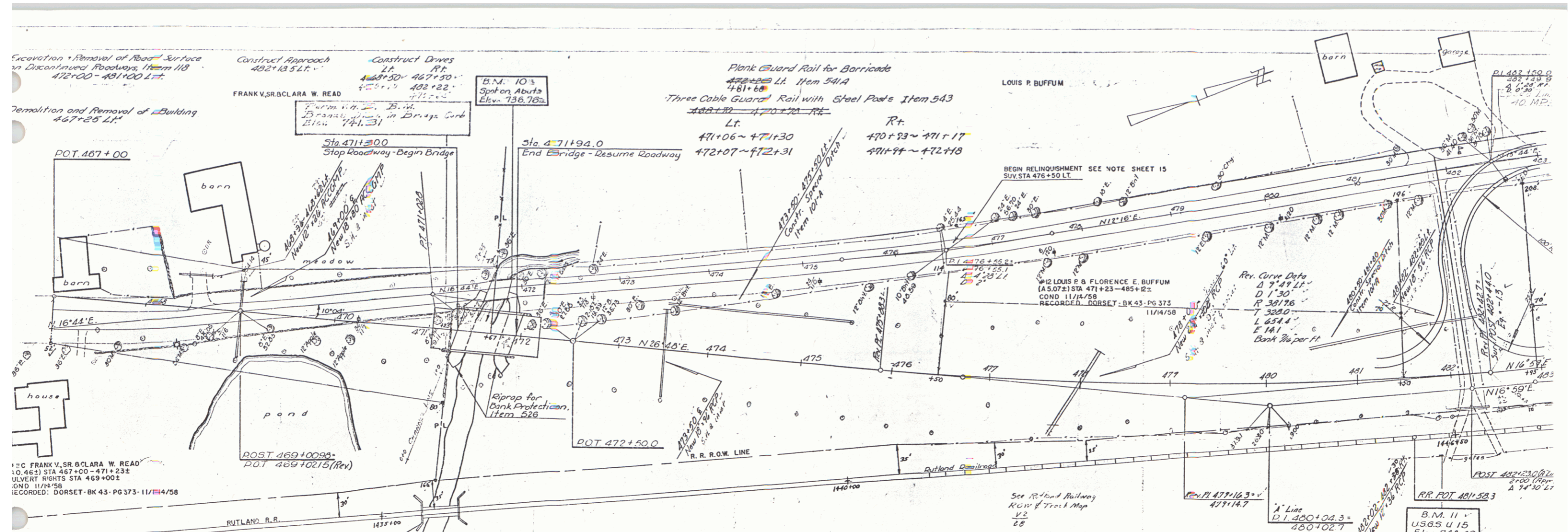




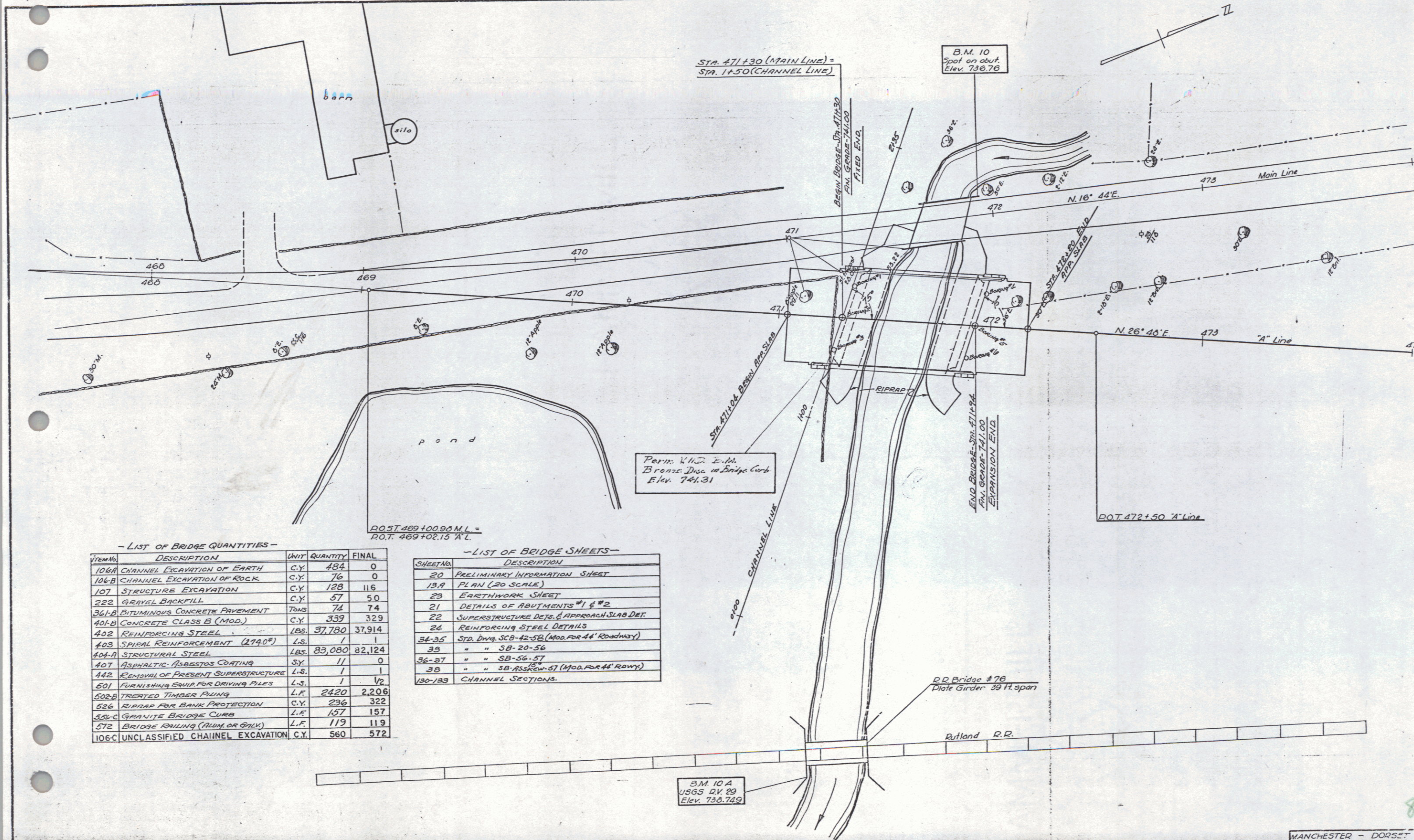
B.M. # 8 Chiselled spot on northwest corner culvert headwall 22 ft Lt. Sta 454+00, elevation 753.46

B.M. # 9 Chiselled spot on southwest corner bridge rail 5.5 ft Lt. Sta 464+10, elevation 737.79

MANCHESTER - DORSET  
Proj. F (Nos. 018-21)



B.M. #10 Chiseled spot on northwest corner concrete bridge abutment 50 ft. U. Sta. 471+90 M.L., elevation 736.76.  
 B.M. #11 U.S.G.S. disc 74 ft. R.R. A Line Sta. 481+09 Elev. 740.09  
 Proj. F Nos. 019-2(5)  
 Sheet 47 of 138



- LIST OF BRIDGE QUANTITIES -

ITEM NO.	DESCRIPTION	UNIT	QUANTITY	FINAL
106A	CHANNEL EXCAVATION OF EARTH	C.Y.	484	0
106B	CHANNEL EXCAVATION OF ROCK	C.Y.	76	0
107	STRUCTURE EXCAVATION	C.Y.	128	116
222	GRAVEL BACKFILL	C.Y.	57	50
341A	BUTUMINOUS CONCRETE PAVEMENT	TONS	74	74
401B	CONCRETE CLASS B (MOD.)	C.Y.	339	329
402	REINFORCING STEEL	LBS.	37,780	37,914
403	SPIRAL REINFORCEMENT (2740°)	L.S.	1	1
404A	STRUCTURAL STEEL	LBS.	83,080	82,124
407	ASPHALTIC ASBESTOS COATING	S.Y.	11	0
442	REMOVAL OF PRESENT SUPERSTRUCTURE	L.S.	1	1
501	FURNISHING EQUIP. FOR DRIVING PILES	L.S.	1	1/2
502B	TREATED TIMBER PILING	L.F.	2420	2,206
526	RIPRAP FOR BANK PROTECTION	C.Y.	236	322
55-C	GRANITE BRIDGE CURB	L.F.	157	157
572	BRIDGE RAILING (ALUM. OR GALV.)	L.F.	119	119
106-C	UNCLASSIFIED CHANNEL EXCAVATION	C.Y.	560	572

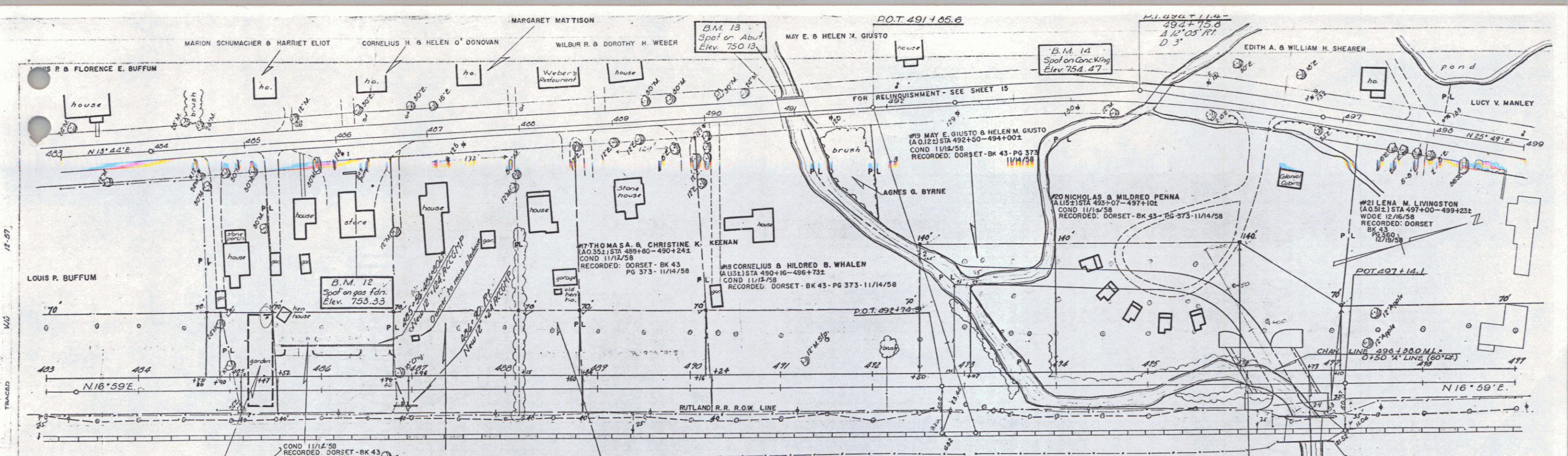
- LIST OF BRIDGE SHEETS -

SHEET NO.	DESCRIPTION
20	PRELIMINARY INFORMATION SHEET
13A	PLAN (20 SCALE)
23	EARTHWORK SHEET
21	DETAILS OF ABUTMENTS #1 & #2
22	SUPERSTRUCTURE DETS. & APPROACH SLAB DET.
24	REINFORCING STEEL DETAILS
34-35	STD. DWG. SCB-42-56 (MOD. FOR 44' ROADWAY)
35	" " SB-20-56
36-37	" " SB-56-57
38	" " SB-ASB-57 (MOD. FOR 44' ROW)
130-139	CHANNEL SECTIONS.

MANCHESTER - DORSET  
 Proj. F 92 (A) & F 12 (A)  
 Surveyed - Palmer 0-07  
 Plotted - Hazen, Traced - u  
 Sheet (32) of 126

SCALE: 1" = 20'

8



#13 Leland P. & Pauline H. Beede  
(A.O. 131) STA 484+90 - 485+52.1  
COND 11/12/58  
RECORDED: DORSET - BK 43 - PG 373 - 11/14/58

**TABLE OF BRIDGE QUANTITIES**

ITEM NO.	ITEM	UNIT	NET	OVER	TOTAL	FINAL
106-C	Unclassified Channel Excavation	c.y.	279.4	279	3073	2978
107	Structure Excavation	c.y.	20	2	44	44
561-B	Bituminous Concrete	tons	77	12	89	89
401-B	Concrete Class B (Mod)	c.y.	376	19	395	384
402	Reinforcing Steel	lb.	45,356	-	45,356	44,947
403	Spiral Reinforcement (3070#)	l.s.	1	-	1	1
404A	Structural Steel	lb.	115,925	2320	119,245	115,065
407	Asphalt-Asbestos Coating	s.y.	12	-	12	0
501	Furn. Equip. for Driving Piles	l.s.	1	-	1	1/2
502-B	Treated Timber Piling	l.f.	2100	-	2100	2172
521	Stone Fill (Heavy Type)	c.y.	880	88	968	880
556-C	Granite Bridge Curb	l.f.	180	-	180	180
572	Bridge Railing	l.f.	138	-	138	138
522	Stone Fill (for Slope Protection)	c.y.	-	-	-	184

#14 Roy E. & Anna A. Wilbur  
(A.O. 332) STA 485+47 - 486+96.2  
COND 11/12/58  
RECORDED: DORSET - BK 43 - PG 373 - 11/14/58

**LIST OF BRIDGE SHEETS**

SHEET NO.	DESCRIPTION
25	Preliminary Information Sheet
14A	Plan (20 Scale)
26	Earthwork Sheet
28	Details of Abutments
27	Superstructure & Approach Slab Details
27	Reinforcing Steel Schedule
3435	Std. Dwg. SCB 42-5B (Mod. for 44' Rdwy)
33	Std. Dwg. SB - 20-56
3637	Std. Dwg. SB - 56-57
39	Std. Dwg. SB A3 30° Skew-57 (Mod. for 44' Rdwy)
134-136	Channel Sections

#15 Frank V. Jr. & Mary A. Read  
(A.O. 332) STA 488+79 - 489+81  
COND 11/12/58  
RECORDED: DORSET - BK 43 - PG 373 - 11/14/58

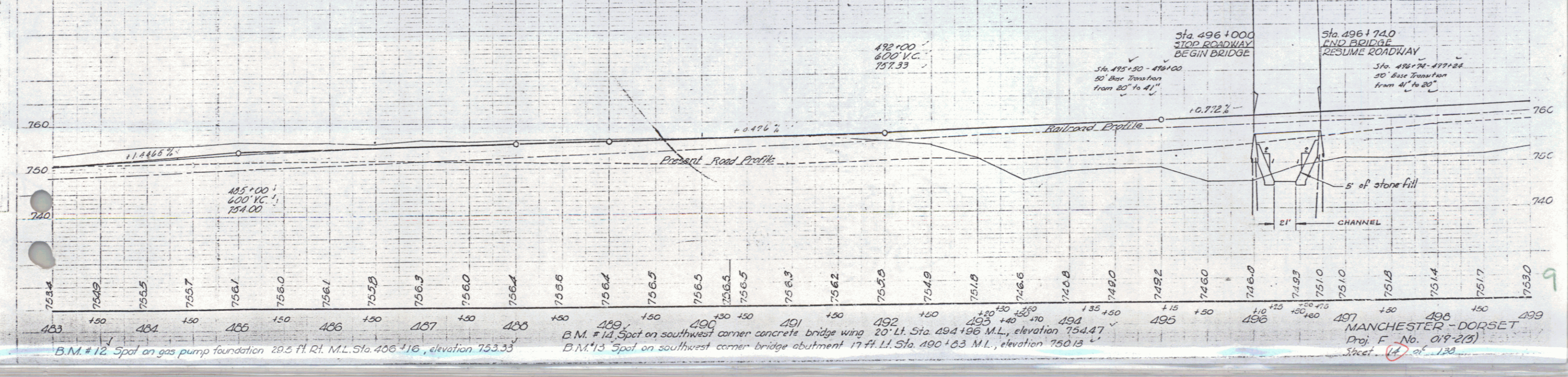
**Demolition & Removal of Building**

ITEM NO.	ITEM	UNIT	NET	OVER	TOTAL	FINAL
494	Demolition & Removal of Building	sq. ft.	494	-	494	494

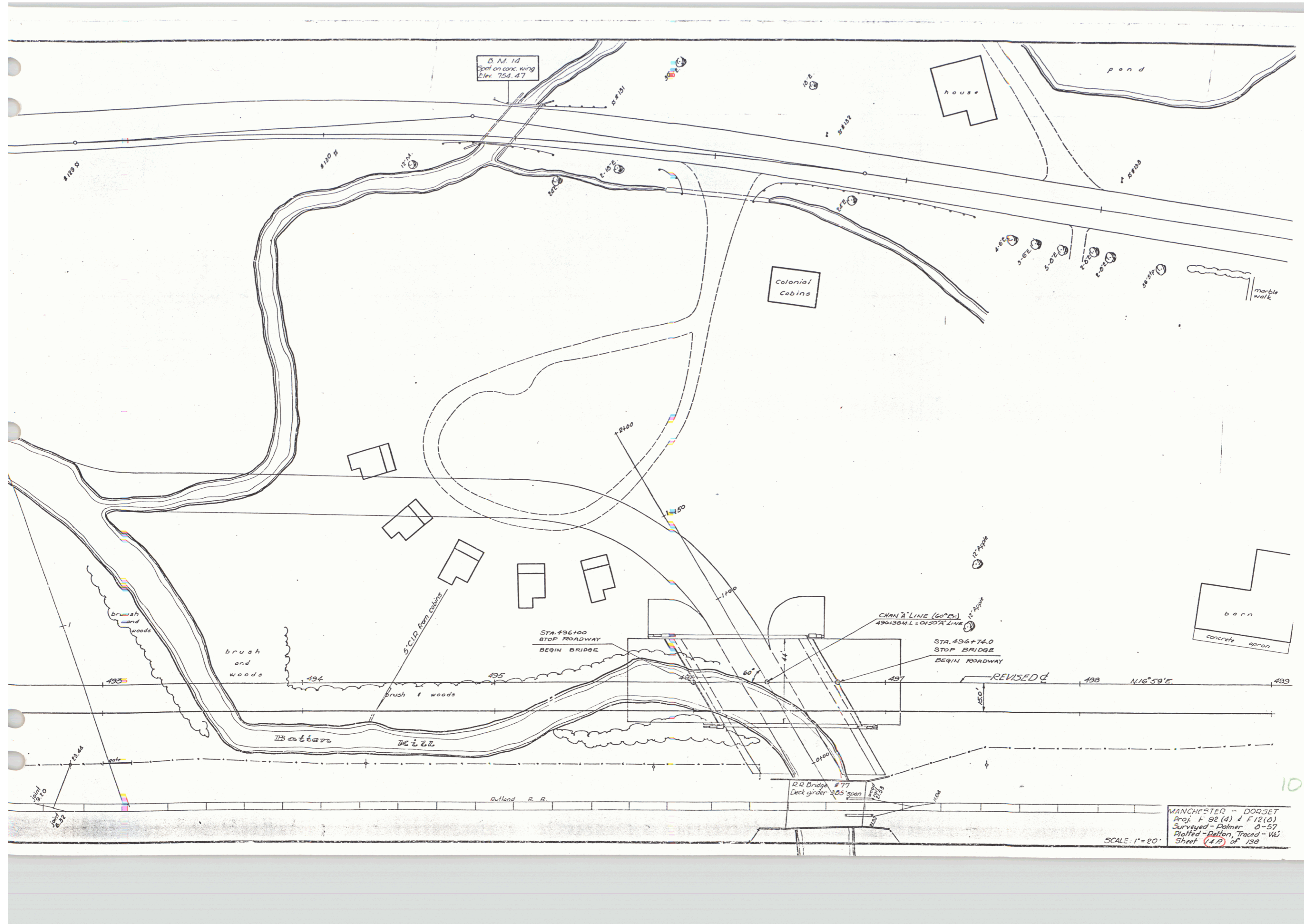
#16 Lester K. & Marjorie W. Roberts  
(A.O. 11) STA 489+15 - 489+84.2  
COND 11/12/58  
RECORDED: DORSET - BK 43 - PG 373 - 11/14/58

**Construct Drives**

ITEM NO.	ITEM	UNIT	NET	OVER	TOTAL	FINAL
485	Construct Drives	sq. ft.	485	-	485	485



B.M. #12 Spot on gas pump foundation 29.5 ft. R.L. M.L. Sta. 406+16, elevation 753.33  
 B.M. #13 Spot on southwest corner concrete bridge wing 20' Lt. Sta. 494+96 M.L., elevation 754.47  
 B.M. #14 Spot on southwest corner bridge abutment 17 ft. Lt. Sta. 490+63 M.L., elevation 750.13  
 MANCHESTER - DORSET  
 Proj. No. 019-2(3)  
 Sheet 14 of 138



B.M. 14  
Spot on conc. wing  
Elev. 754.87

house

pond

Colonial  
Cobins

marble  
walk

barn  
concrete apron

STA. 496100  
STOP ROADWAY  
BEGIN BRIDGE

STA. 496+74.0  
STOP BRIDGE  
BEGIN ROADWAY

CHANG' LINE (60° E)  
496+384.1 ON 50' A' LINE

REVISED

N16°59'E

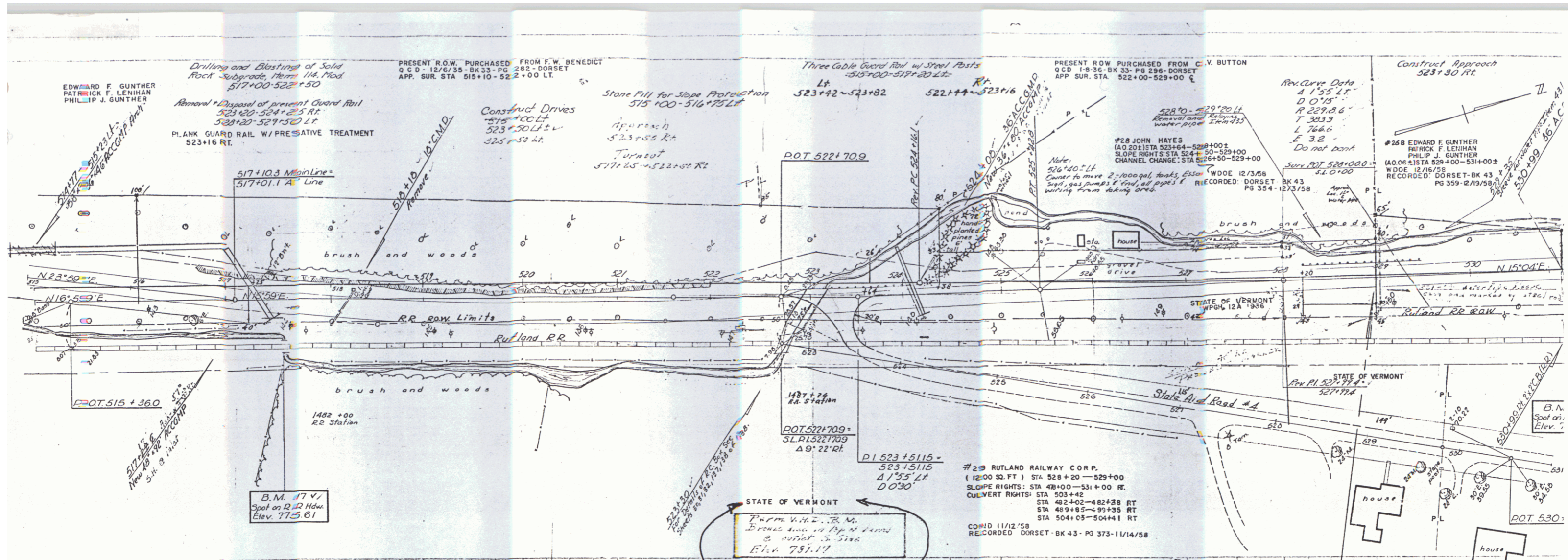
D.D. Bridge #77  
Deck girder 28.5' span

MANCHESTER - DOOSET  
Proj. L 92 (4) & F 12 (0)  
Surveyed - Palmer 0-57  
Plotted - Patton, Traced - WJ  
Sheet (1A) of 13a

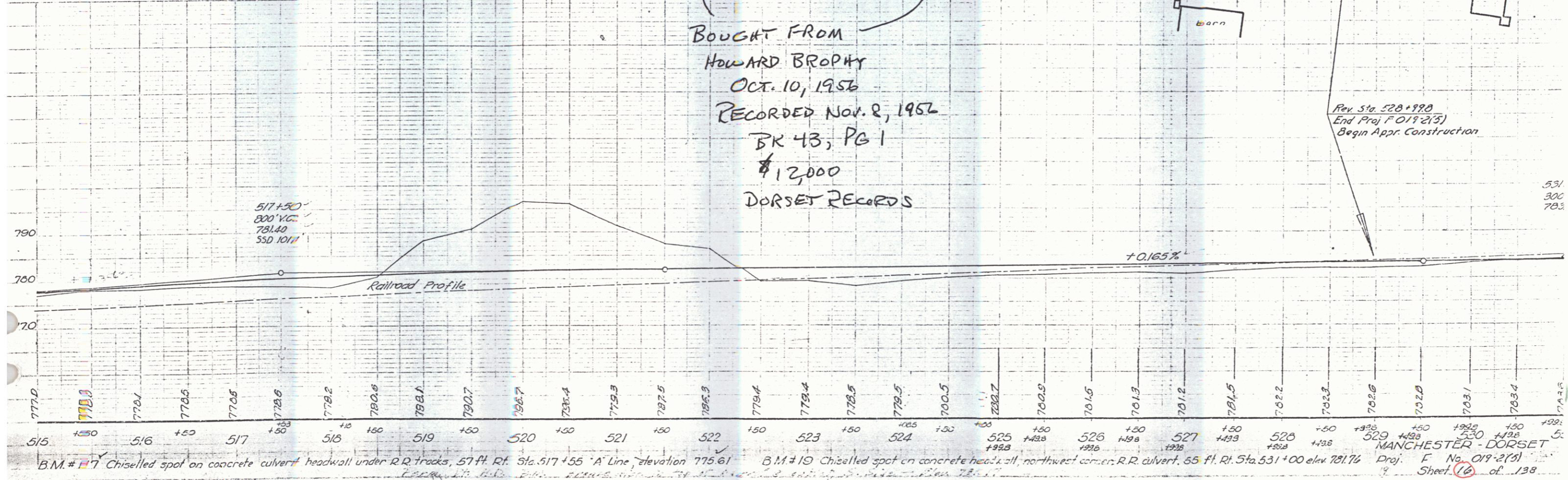
SCALE: 1"=20'

10





BOUGHT FROM  
 HOWARD BROPHY  
 OCT. 10, 1956  
 RECORDED NOV. 2, 1956  
 BK 43, PG 1  
 \$12,000  
 DORSET RECORDS



B.M. # 17 Chiselled spot on concrete culvert headwall under R.R. tracks, 57 ft. Rf. Sta. 517+55 'A' Line elevation 775.61  
 B.M. # 10 Chiselled spot on concrete headwall, northwest corner R.R. culvert, 65 ft. Rf. Sta. 531+00 elev. 781.76  
 MANCHESTER - DORSET  
 Proj. F No. 019-2(3)  
 Sheet 16 of 138