

Removal & Deposit of Present Guard Rail
 LT. 402+50 - 403+00
 403+00 - 403+50
 403+50 - 404+00

PRESENT R.O.W. PURCHASED FROM C.J. LASSOR BY
 W.D.G.E. 6/25/41 - BK 41 - PG 207 MANCHESTER
 APP. SUR. STA 398+71 - 409+50

B.M. # 3 V
 Spot on headwall
 Elev. 790.56

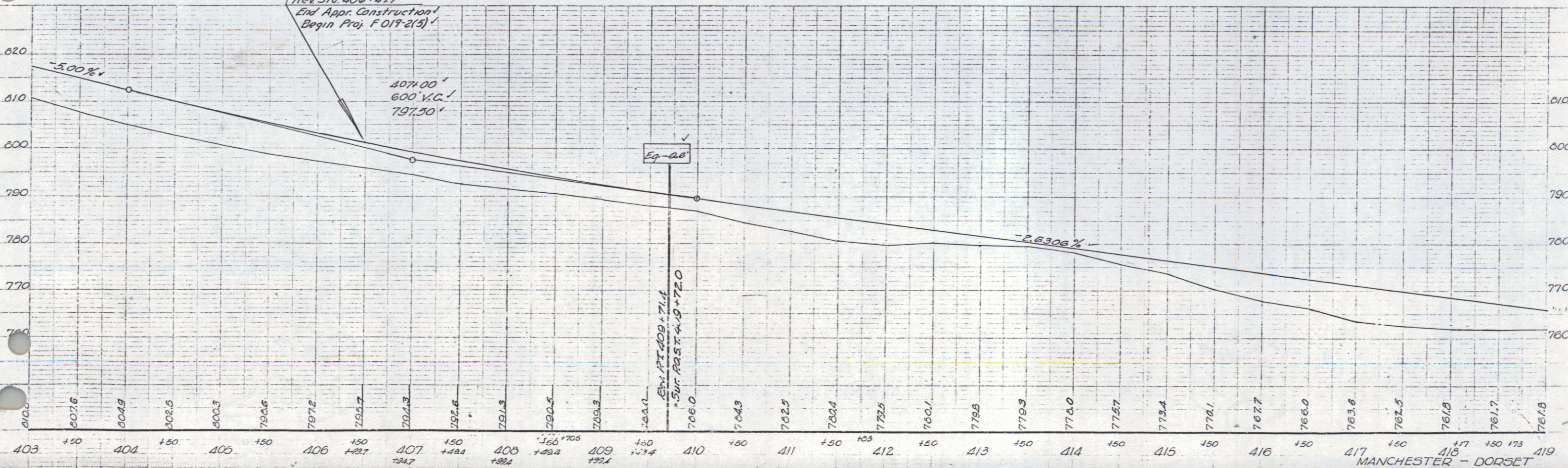
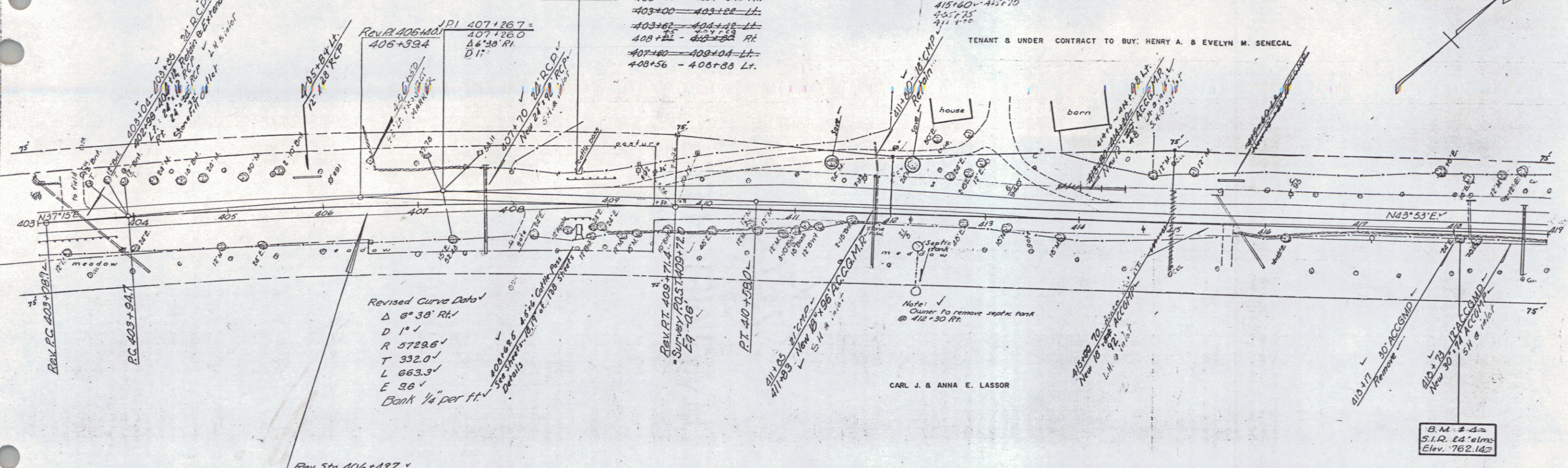
Three Cable Guard Rail with Steel Posts Item 543
 403+00 - 403+50 Rt.
 403+00 - 403+50 Lt.
 403+50 - 404+00 Lt.
 404+00 - 404+50 Rt.
 404+50 - 405+00 Lt.
 405+00 - 405+50 Lt.

Construct Drives
 Lt. Rt.
 403+40 - 403+10
 404+00 - 403+40
 405+00 - 405+70
 405+75
 405+75

FLANK GUARD RAIL W/PRESERVATIVE TREATMENT
 413+30 - 413+70 LT.

CARL J. & ANNA E. LASSOR

TENANT & UNDER CONTRACT TO BUY: HENRY A. & EVELYN M. SENECALE



B.M. # 3. Chiselled spot on west headwall cattle pass 24' left sta. 400+50, elevation 790.56. B.M. # 4. Spike in roof 24' elm, 10.5 ft. Rt. Sta. 410+00, elevation 762.14.

MANCHESTER - DORSET
 Proj. E. Nos. 017-2(1)
 Sheet (9) of 138