

THREE CABLE GUARD RAIL w/ STEEL POSTS
 LT. 399+27-403+00
 Removal + Disposal of Present Guard Rail
 399+00-399+50 RT.
 399+00-403+00 RT.

Construct Approach
 398+00 RT.
 311+00
 #1A NICHOLAS & ELEANOR LEMTUGOV
 (A.O.12) STA 396+00-398+68.2
 W.D.O.E. 12/16/58
 RECORDED MANCHESTER - BK 52 - PG 286 - 12/19/58

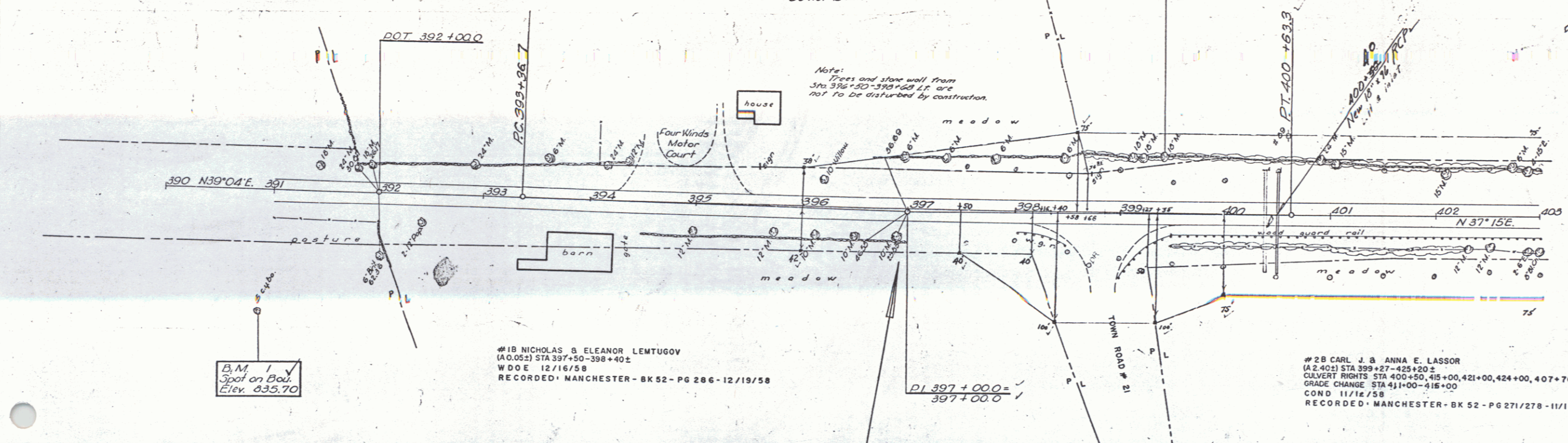
PRESENT ROW PURCHASED FROM H.P. WAY BY
 W.D.O.E. 6-23-41 BK 41 PG 206 MANCHESTER L.R.
 APR SUR. STA 391+76-399+71 C

PRESENT ROW ESTABLISHED BY F.A.R. 92 C (I) 1942
 SUR. STA 391+00-409+50 LT. & RT.

Δ 1° 49' 14" V
 D 0' 15" V
 R 229' 6.3"
 T 363.3"
 L 72.6"
 E 29"
 Do not Bank V

B.M. #2 V
 51' 10" Maple
 Elev. 831.52

#2A CARL J. & ANNA E. LASSOR
 (A.100) STA 398+58-409+92
 COND 11/12/58
 RECORDED MANCHESTER - BK 52 - PG 271/278 - 11/14/58



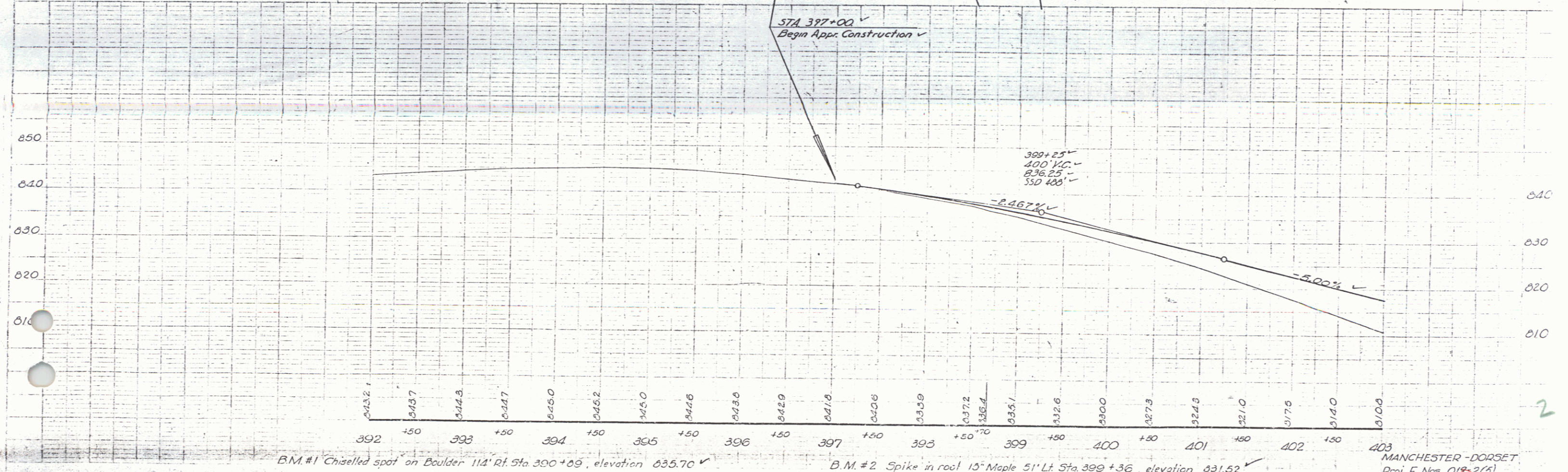
B.M. #1 V
 Spot on Boulder
 Elev. 835.70

#1B NICHOLAS & ELEANOR LEMTUGOV
 (A.O.05) STA 397+50-398+40.2
 W.D.O.E. 12/16/58
 RECORDED MANCHESTER - BK 52 - PG 286 - 12/19/58

PI 397+00.0
 397+00.0

#2B CARL J. & ANNA E. LASSOR
 (A.2.40) STA 399+27-425+20.2
 CULVERT RIGHTS STA 400+50, 405+00, 421+00, 424+00, 407+70
 GRADE CHANGE STA 411+00-416+00
 COND 11/12/58
 RECORDED MANCHESTER - BK 52 - PG 271/278 - 11/14/58

STA 397+00
 Begin Appr. Construction



B.M. #1 Chiselled spot on Boulder 114' Rt. Sta 390+69, elevation 835.70

B.M. #2 Spike in root 15' Maple 51' Lt. Sta 399+36, elevation 831.52

MANCHESTER - DORSET
 Proj. F. Nos. 01R-2(5)