

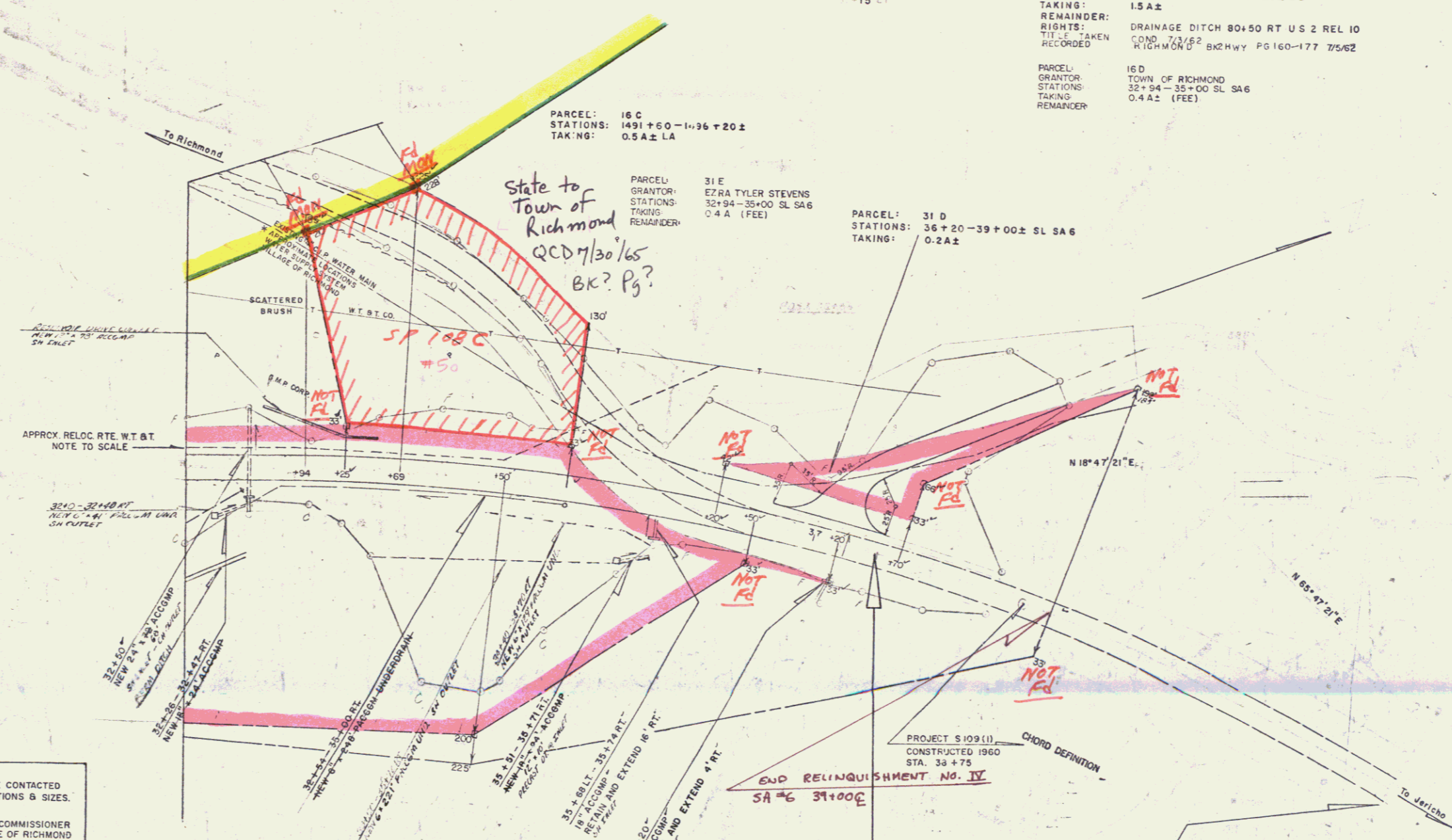
TWO CABLE GUARD RAIL ITEM 542		
STATION	STATION	POS.
S.A.-6 RELOC.		
32+00	32+24	LT
34+26	34+50	RT
37+00	37+24	LT

EXCAVATION & REMOVAL OF ROAD SURFACE ON ROADWAYS ITEM 115-A		
STATION	STATION	POS.
S.A.-6 RELOC.		
32+90	35+75	LT

CONSTRUCT DRIVE	
LT	RT
33+00	

BENCHING OF EARTH CUTS AND DRAINAGE OF BENCHING DEPENDENT UPON ACTUAL LEDE LOCATION AND WILL BE REDESIGNED AS REQUIRED DURING CONSTRUCTION		
STATION	STATION	POS.
S.A.-6 RELOC.		
32+00	32+50	RT
33+50	35+75	RT

WOOD GUARD RESTS  
32+00 - 33+50 RT  
33+50 - 35+75 LT



\* THE FOLLOWING PEOPLE WERE CONTACTED REGARDING APPROX. PIPE LOCATIONS & SIZES.

ORRA MARSHALL-----WATER COMMISSIONER  
VILLAGE OF RICHMOND

ALBERT EDWARDS-----FORMER OWNER  
OF SYSTEM

WALTER ADAMS-----CONTRACTOR

END CONSTRUCT  
S.A.-6 RELOC. SATISFACTORY  
APPROACH  
37 + 50

CONTRACT NO. 4	
STATE OF VERMONT DEPARTMENT OF HIGHWAYS	
INTERSTATE PROJECT in the towns of BOLTON-RICHMOND	
PLAN S.A.-6 RELOC. STA. 32+00 TO 42+00	
WEBSTER-MARTIN, INC. CONSULTING ENGINEERS 50, BURLINGTON, VT.	
SURVEYED BY W.B.M.	CHECKED BY R.A.S.
DRAWN BY W.B.M.	IN CHARGE P.D.
PROJECT NO. 159-2 (B)	SHEET (39) OF 101

CONTROL OF ACCESS  
IS COMPLETE ON  
THIS SITE