

STATION	RT LANE	STATION	POS
1274+00	1281+83	LT	
1274+00	1281+83	RT	
1274+00	1281+83	RT	
1274+00	1281+83	RT	
1274+00	1281+83	RT	
1274+00	1281+83	RT	
1274+00	1281+83	RT	
1274+00	1281+83	RT	
1274+00	1281+83	RT	
1274+00	1281+83	RT	

STATION	RT LANE	STATION	POS
1266+00	1272+23	LT	
1266+00	1272+23	LT	
1266+00	1272+23	LT	
1266+00	1272+23	LT	
1266+00	1272+23	LT	
1266+00	1272+23	LT	
1266+00	1272+23	LT	
1266+00	1272+23	LT	
1266+00	1272+23	LT	
1266+00	1272+23	LT	

Bituminous Concrete  
Curb  
Item 555  
RT Lane  
1267+00 1267+91 LT  
1274+05 1281+00 LT  
LT Lane  
1274+08 1281+00 LT

STATION	RT LANE	STATION	POS
1277+71	1279+00	RT	

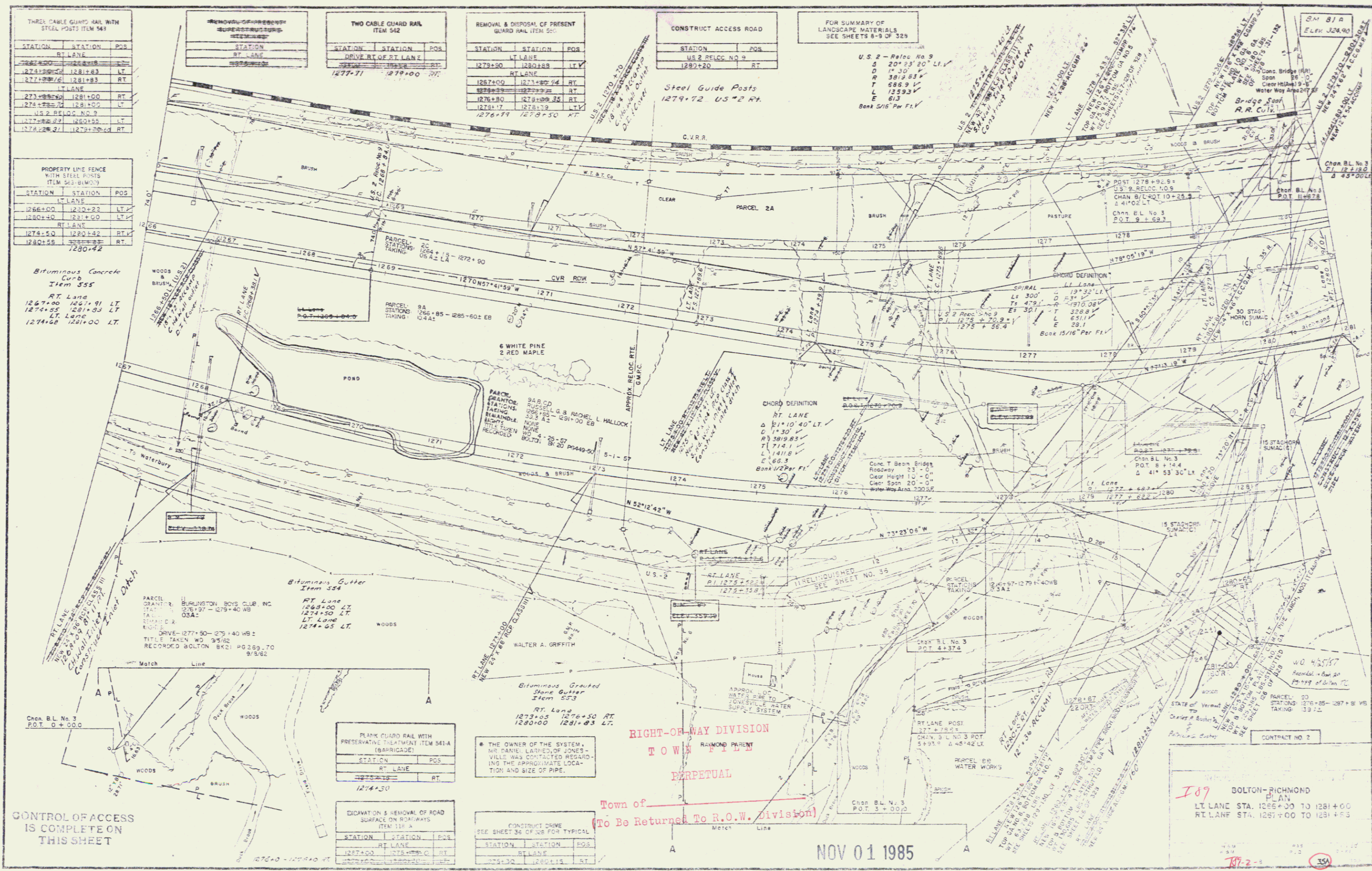
STATION	RT LANE	STATION	POS
1277+71	1279+00	RT	

STATION	RT LANE	STATION	POS
1279+30	1282+88	LT	
1279+30	1282+88	LT	
1279+30	1282+88	LT	
1279+30	1282+88	LT	
1279+30	1282+88	LT	
1279+30	1282+88	LT	
1279+30	1282+88	LT	
1279+30	1282+88	LT	
1279+30	1282+88	LT	
1279+30	1282+88	LT	

STATION	RT LANE	STATION	POS
1280+20		RT	

FOR SUMMARY OF  
LANDSCAPE MATERIALS  
SEE SHEETS 8-9 OF 329

US 2 - Reloc No 9  
S 20° 33' 20" LT  
D 1' 30"  
R 3819.83  
T 686.9  
L 1359.3  
E 613  
Bank 5/16" Per Ft V



CONTROL OF ACCESS  
IS COMPLETE ON  
THIS SHEET

STATION	RT LANE	STATION	POS
1274+30		RT	

THE OWNER OF THE SYSTEM,  
MR DANIEL LARNEY, OF JONES-  
VILLE WAS CONTACTED REGARD-  
ING THE APPROXIMATE LOCA-  
TION AND SIZE OF PIPE.

RIGHT-OF-WAY DIVISION  
TOWN OF  
PERPETUAL

Town of  
(To Be Returned To R.O.W. Division)

NOV 01 1985

BOLTON-RICHMOND  
PLAN  
LT LANE STA. 1266+00 TO 1281+00  
RT LANE STA. 1281+00 TO 1281+83

Const  
+  
Row