

NON-COMMERCIAL DRIVES
 52+12 R (24x41)
 52+10 R
 52+79 R
 53+86 R (Person's)
 53+72

CONSTRAINT AREA
 54+57 R (Person's)

CUTTING AND
 REMAINING TREES
 52+00-53+00
 52+00-53+00
 52+00-53+00

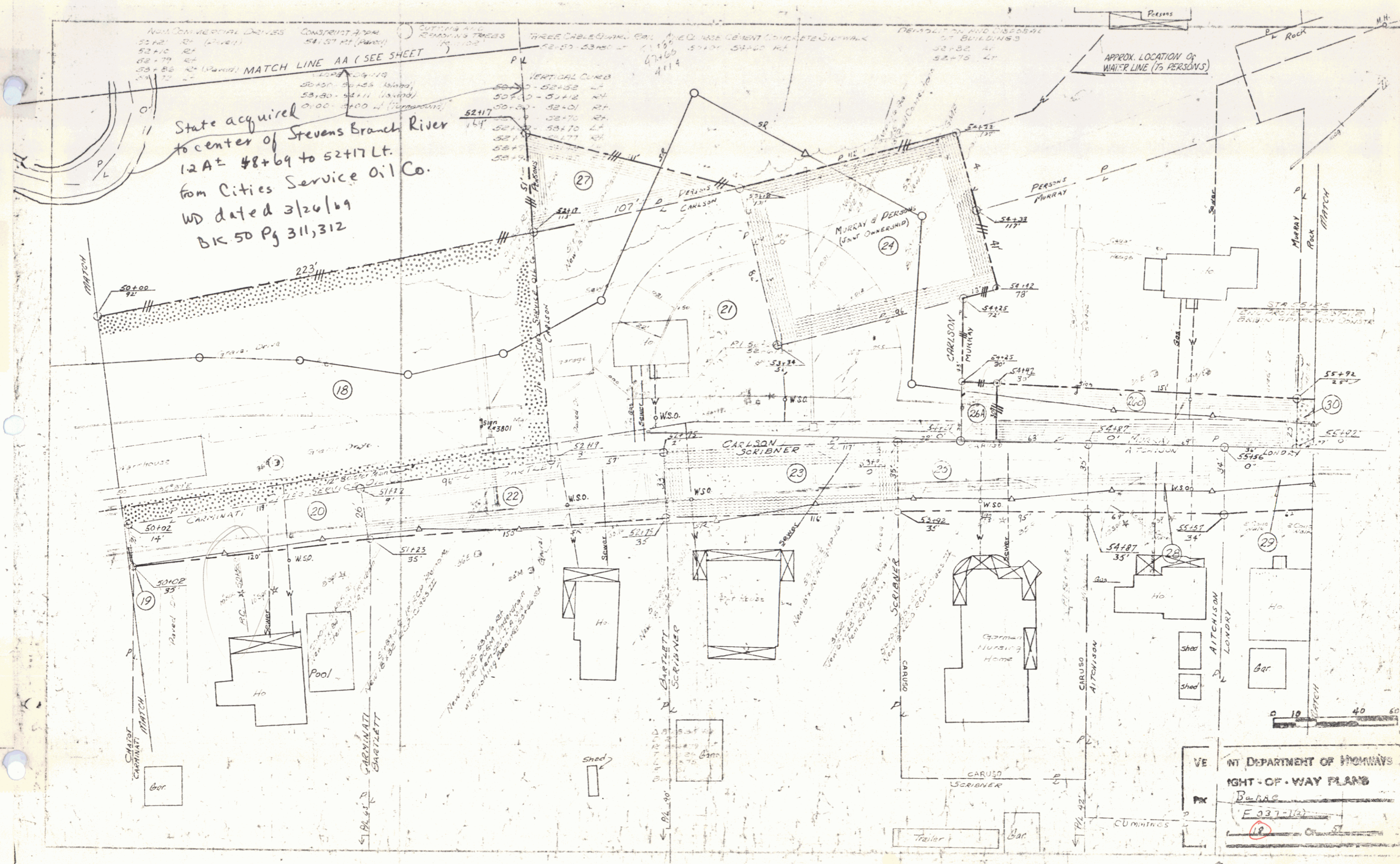
THREE CABLE GUARD RAILS
 52+00-53+00

REMOVE EXISTING AND RECONSTRUCT
 52+00-53+00

REMOVE EXISTING AND RECONSTRUCT
 52+00-53+00

MATCH LINE AA (SEE SHEET)

State acquired
 to center of Stevens Branch River
 12 A± 48+69 to 52+17 Lt.
 from Cities Service Oil Co.
 WD dated 3/26/69
 BK 50 Pg 311,312



VE NT DEPARTMENT OF HIGHWAYS
 RIGHT-OF-WAY PLANS
 BARRS
 E 037-102
 18