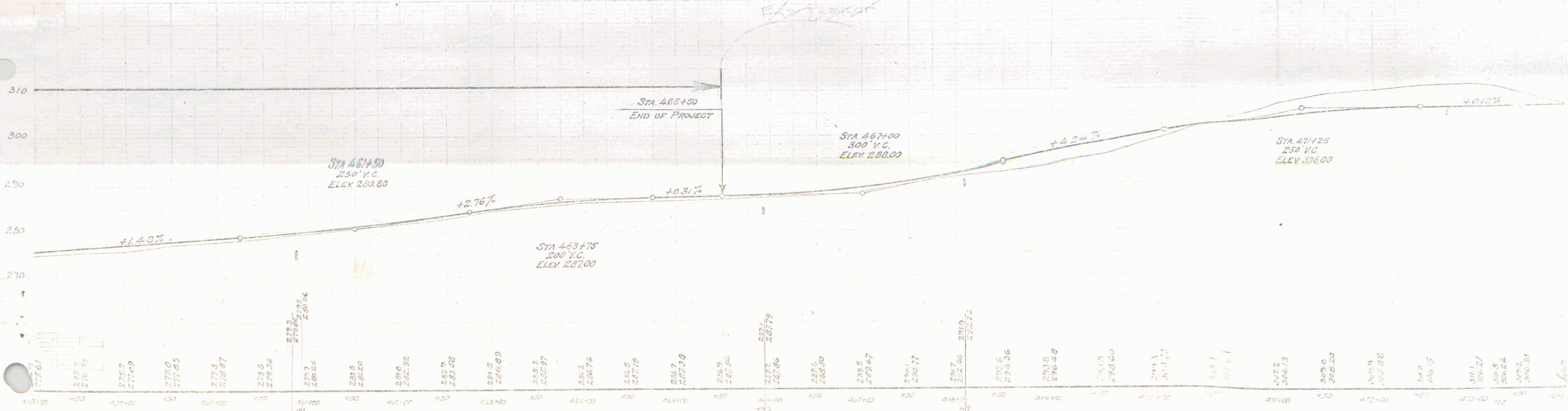
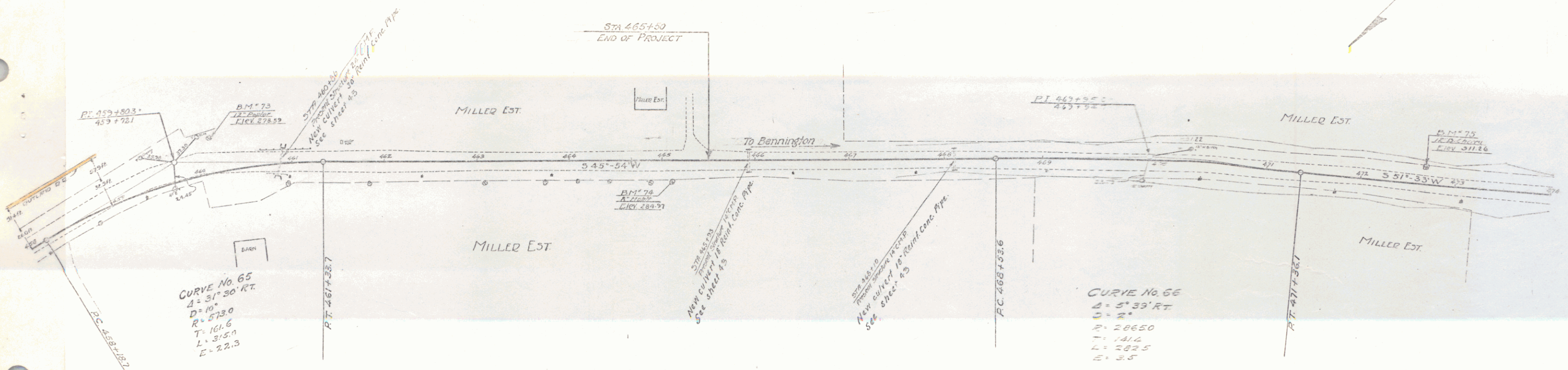


WOOD SHIELD RAIL REQUIRED

Station	Left Right
450+00 - 450+00	24 FT
450+00 - 451+00	24 FT
451+00 - 452+00	24 FT
452+00 - 453+00	24 FT

NEW REINF CONC PIPE CULVERTS REQUIRED

Station	Span	Depth	Material
450+00 - 451+00	32	3.4	34
451+00 - 452+00	18	3.4	34
452+00 - 453+00	18	3.4	34



B.M. 73 SPIKE IN TOP OF 12" D. CYPRESS, 38 FT. W. OF STA 460+14 - ELEV. 278.59
 B.M. 74 SPIKE IN TOP OF 12" D. CYPRESS, 21 FT. W. OF STA 463+10 - ELEV. 284.97
 B.M. 75 SPIKE IN TOP OF 12" D. CYPRESS, 17 FT. W. OF STA 471+10 - ELEV. 311.24

SECS. 2, 10, 18-A
 5-27-08