

CHABLE GUARD RAIL REQUIRED
 Stations Left Right
 442+30-443+54 24 ft

CHABLE GUARD RAIL REQUIRED
 Station 442+30 10 Left Right
 442+30-443+54 24 ft

NEW REINFORCED CONC. PIPE CULVERTS REQUIRED
 Station Diam Length Core A Core B Steel D/Side
 442+30 18" 15' 14" 14" 20"
 443+30 18" 15' 14" 14" 20"
 443+30 30" 15' 14" 14" 20"

NEW REINFORCED CONC. BOX CULVERTS REQUIRED
 Stations Size Core A Steel
 443+30-443+54 30" 14" 20"
 443+54-444+00 30" 14" 20"

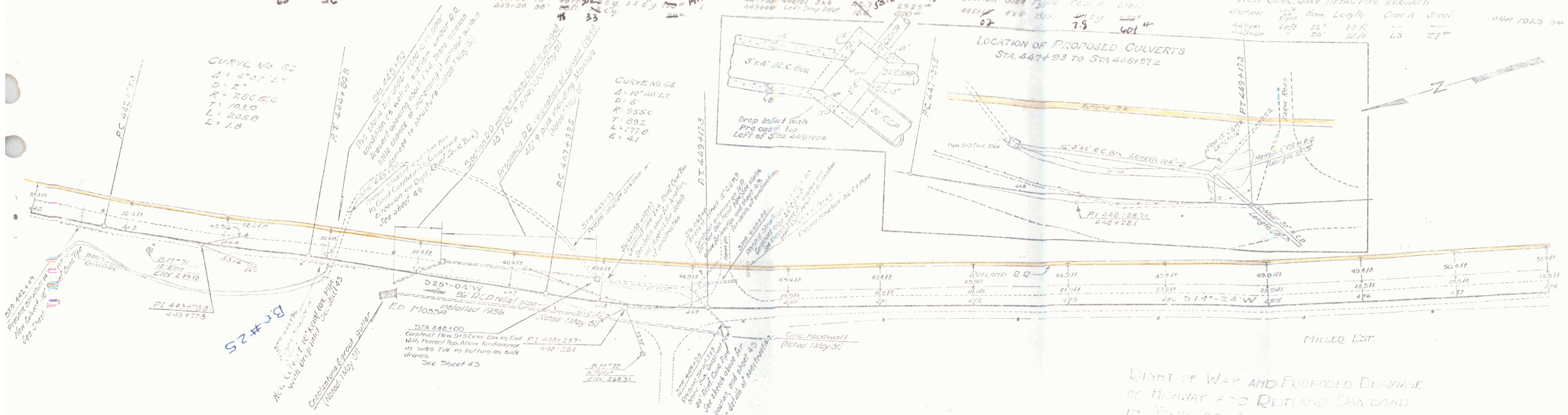
REINFORCED CONC. CULVERT PIPES REQUIRED
 Station Size Type Core A Steel
 443+54 18" Box 14" 20"

NEW CORR. GALV. METAL PIPE REQUIRED
 Station Size Type Core A Steel
 443+54 18" 14" 20"

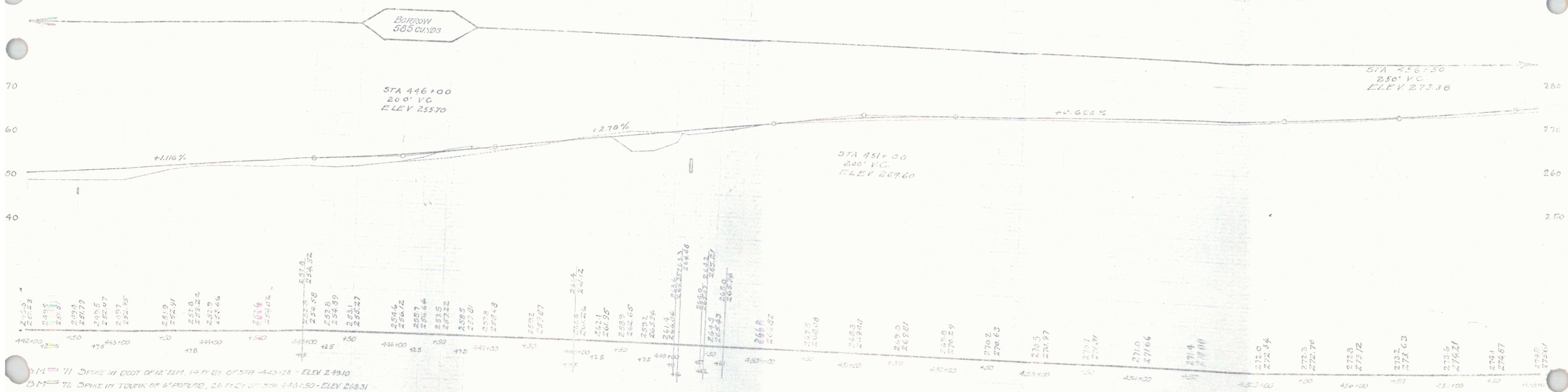
CURVE NO 55
 Δ = 2° 07' 47"
 D = 2"
 R = 2005.0
 T = 103.0
 L = 203.8
 E = 1.8

CURVE NO 54
 Δ = 10° 40' 47"
 D = 8"
 R = 955.0
 T = 89.2
 L = 177.0
 E = 4.1

LOCATION OF PROPOSED CULVERTS
 STA. 442+93 TO STA. 443+92



RIGHT OF WAY AND PROPOSED DRAINAGE
 OF HIGHWAY AND RAILROAD
 IN TOWN OF EDLINGTON



Sheet 24-A
 Sheet 24-B