

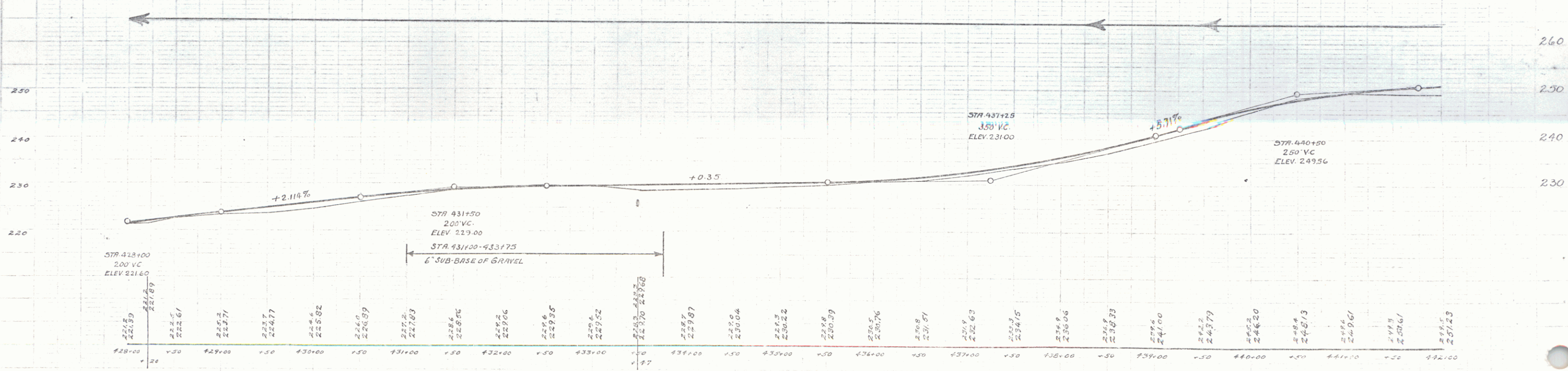
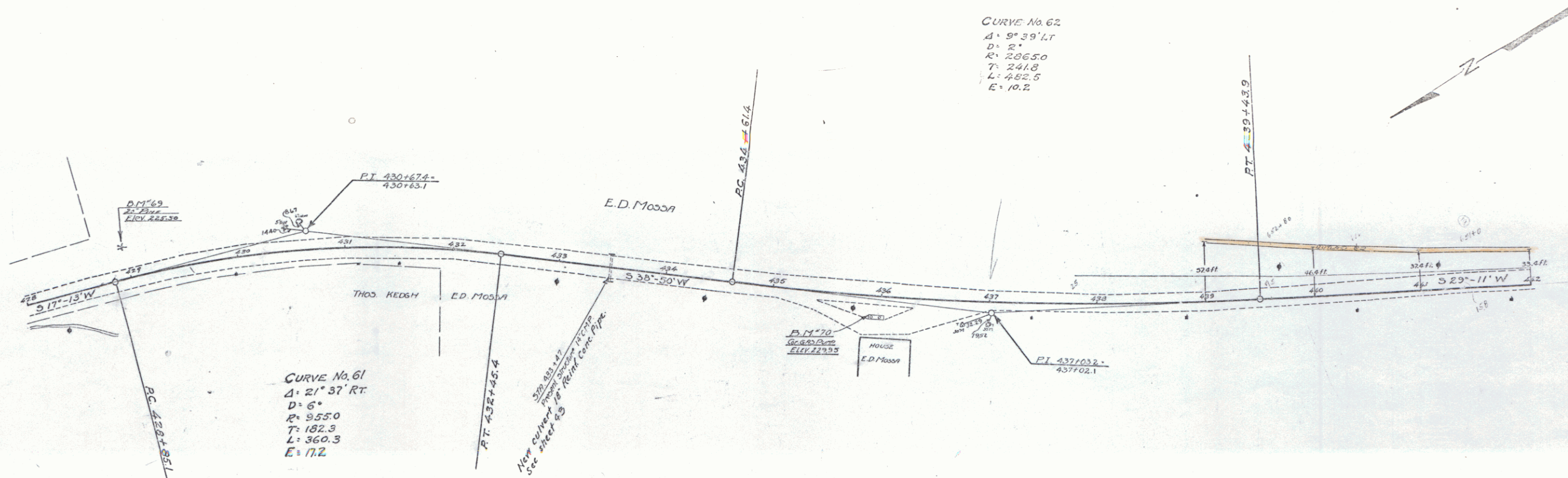
WOOD GUARD RAIL REQUIRED
 Stations Left Right
 4331.15 4331.69 24 ft 24 ft

NEW REIN. CONC. PIPE CULVERTS REQUIRED
 Station from beg. Conc. D. Slope
 4331.41 18" 31 ft 20.0% 20' 34"
 3.8

1047 1928 23 00

CURVE No. 62
 Δ = 9° 39' LT
 D = 2"
 R = 206.50
 T = 241.8
 L = 482.5
 E = 10.2

CURVE No. 61
 Δ = 21° 37' RT
 D = 6"
 R = 955.0
 T = 182.3
 L = 360.3
 E = 17.2



B.M. 69 - SPIKE IN ROOT 20' PINE 26' LT OF STA. 428+96 - ELEV. = 225.30
 B.M. 70 - DRILL HOLE IN N.E. CORNER GRD. PUMP FOUNDATION, 18' EY OF STA. 435+90 - ELEV. 223.55

SERIES FIG. 104-A
 SHEET 53 OF 58