

WOOD GUARD RAIL REQUIRED

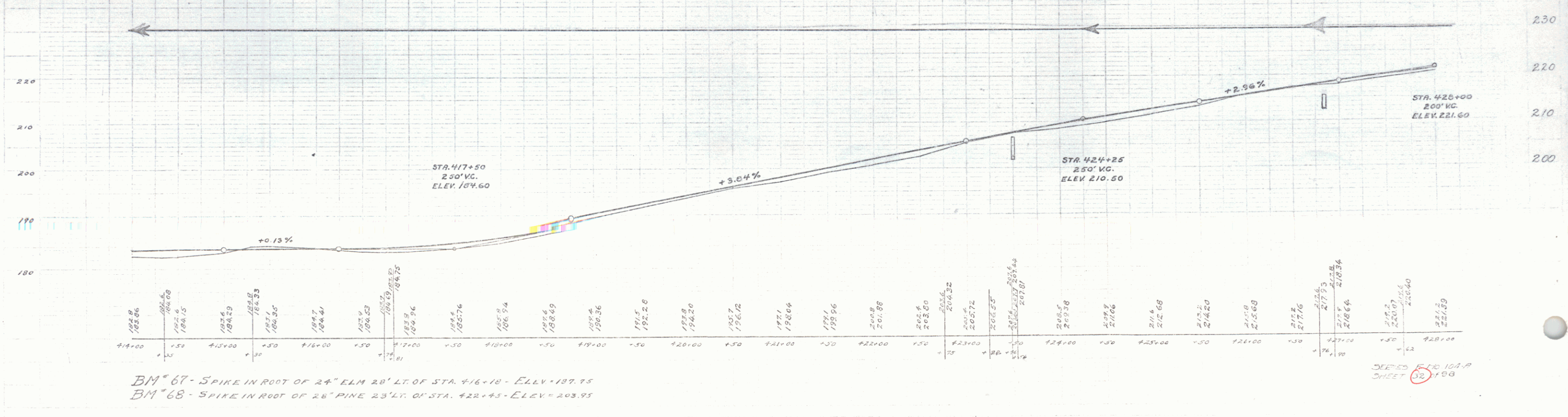
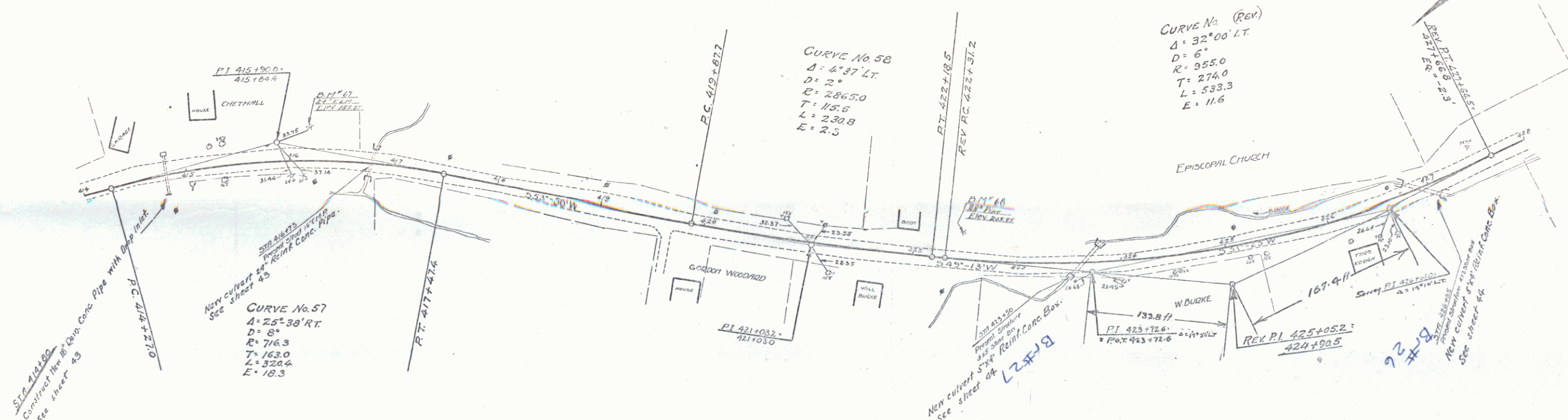
Stations	Left	Right
416+42-416+65	-	24 ft
416+65-416+98	24 ft	-
422+14-422+18	24 ft	-
422+18-422+28	24 ft	-
422+28-422+38	24 ft	-

CABLE GUARD RAIL REQUIRED

Stations	Left	Right
416+00-416+100	-	10 ft

NEW REINFC CONC PIPE CULVERTS REQUIRED    NEW REINFC CONC BOX CULVERTS REQUIRED

Station	Diam	Length	Grade	Material	Notes
416+00	18"	36 ft	1.8%	Reinfc Conc	See sheet 43
416+40	24"	40 ft	1.8%	Reinfc Conc	See sheet 43
422+14	36"	35 ft	1.8%	Reinfc Conc	See sheet 43
422+18	36"	35 ft	1.8%	Reinfc Conc	See sheet 43
422+28	36"	35 ft	1.8%	Reinfc Conc	See sheet 43



BM 67 - SPIKE IN ROOT OF 24" ELM 20' LT. OF STA. 416+18 - ELEV. 187.75  
 BM 68 - SPIKE IN ROOT OF 26" PINE 23' LT. OF STA. 422+45 - ELEV. 203.95

SEE SHEET 10A-P  
 SHEET 10B