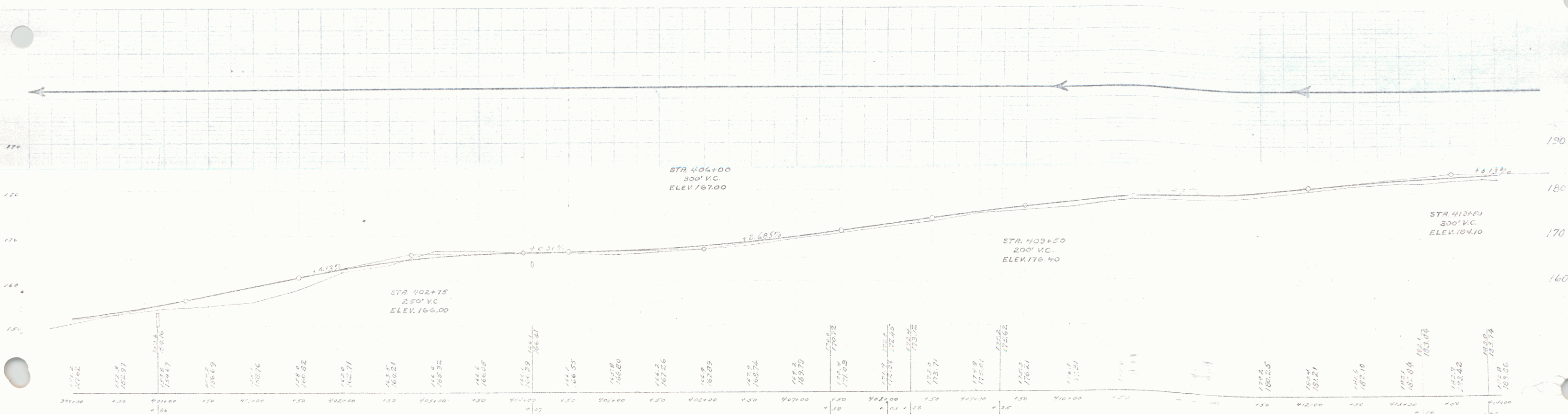
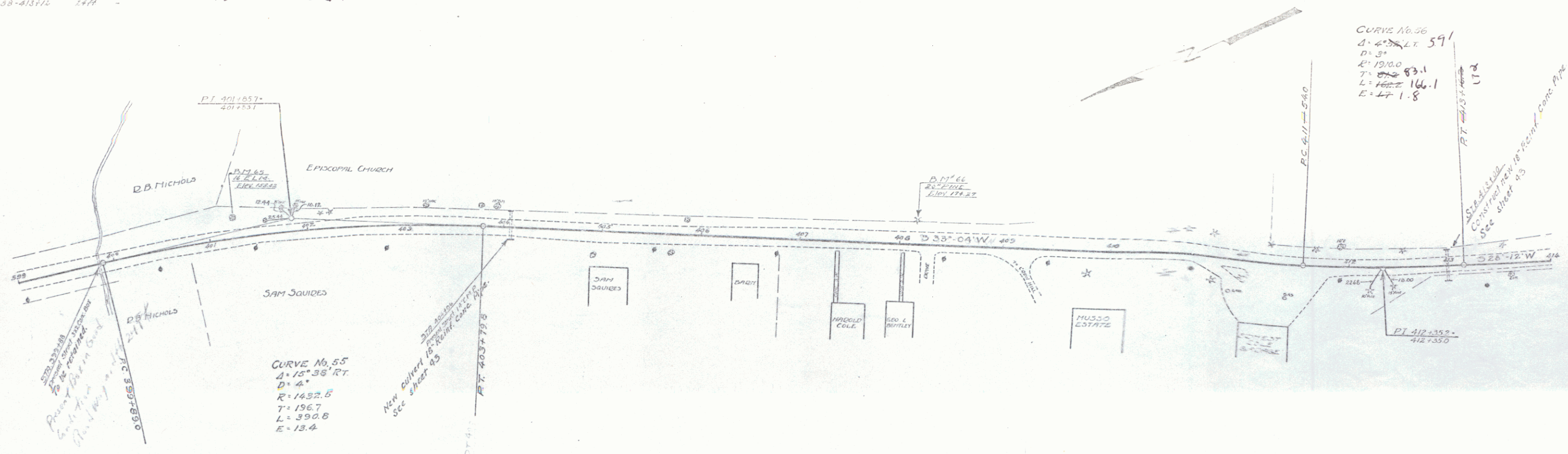


Left Hand Rail Curves  
 Stations Left Right  
 25+121-199+30 24H 24H  
 43+195-428+19 24H 24H  
 412+38-413+12 24H -

Leave Guard Rail Curves  
 Stations Left Right  
 412+38 - 414+4 14H  
 415+04 216 ft.

New Main Conc. Pipe Curves Required  
 Station Elev. and Spacing  
 431+07 18' 34" - 34' 34"  
 431+93 18' 32" - 34' 34"

1044 1325 31 00



BM 65 - SPIKE IN TRUNK 16" DIA. OF STA. 401+25 - ELEV. = 158.02  
 BM 66 - SPIKE IN ROOT OF 20" PINE 20' LT. OF STA. 408+16 - ELEV. = 174.21

37  
 1044 1325 31 00

30