

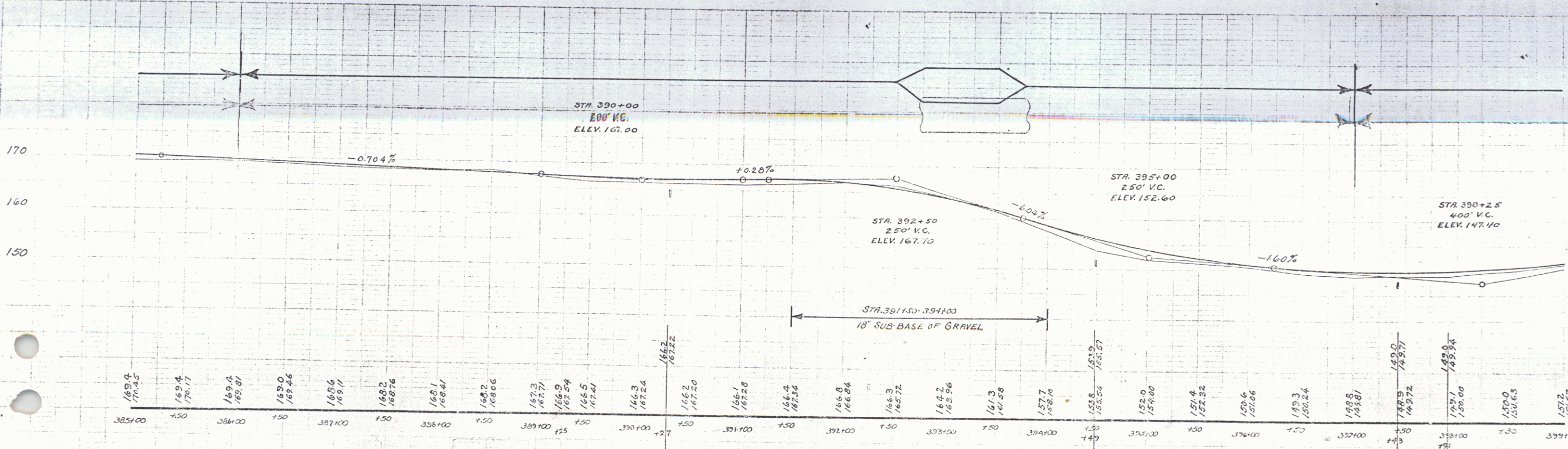
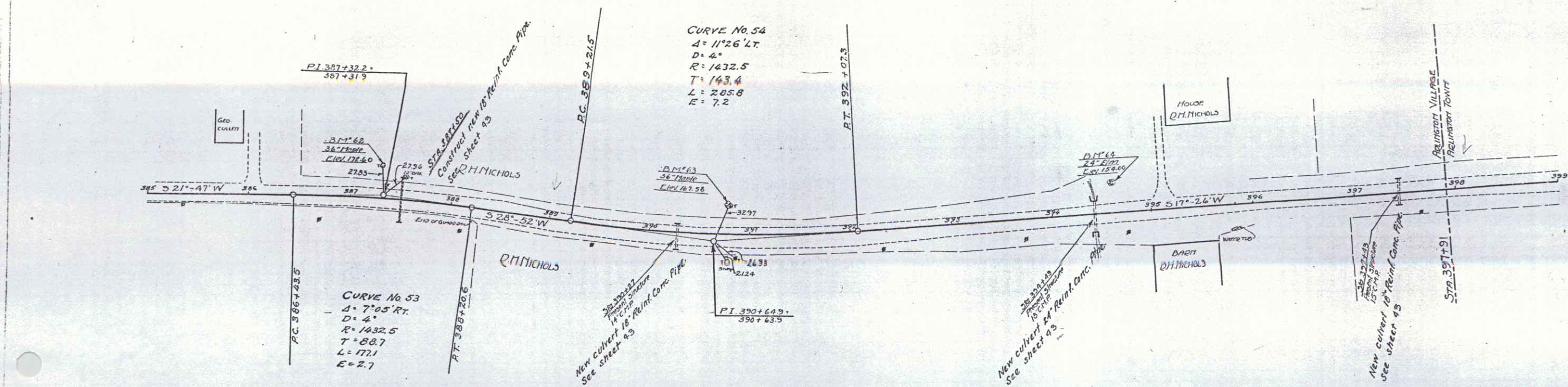
Wood Guard Rail Required

Cable Guard Rail Required

Stations	Left	Right
38662-38762	24H	24H
38710-38810	24H	24H
38810-38910	24H	24H
38910-39010	24H	24H

Stations	Left	Right
38662-38762	432H	432H
38710-38810	434H	434H

3871.50	15'	44.4'	-	3.0 c.y.	33"
3871.27	18'	32.0'	-	3.0 c.y.	33"
3871.10	24'	32.0'	3.4 c.y.	-	34"
3871.43	18'	32.0'	-	3.0 c.y.	33"



D.M. 62 SPIKE IN FOOT OF 36" PIPE, 36 FT. LT. OF STA. 387+31 - ELEV. 172.40  
 D.M. 63 SPIKE IN FOOT OF 36" PIPE, 34 FT. LT. OF STA. 390+79 - ELEV. 167.58  
 D.M. 64 SPIKE IN FOOT OF 24" CLM, 27 FT. LT. OF STA. 394+62 - ELEV. 154.60