

**Prop. Grade Row Required**

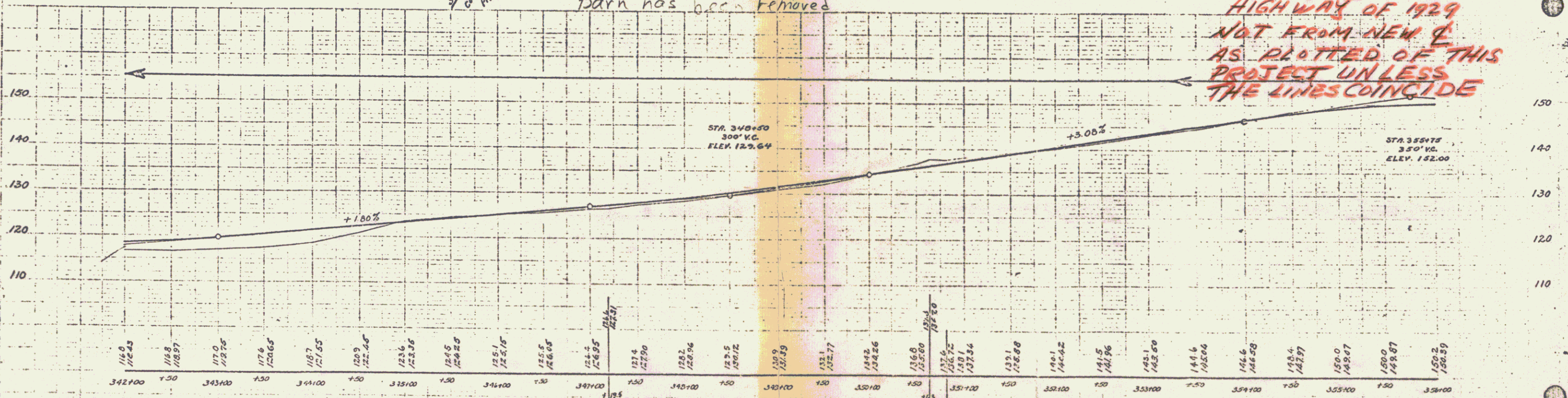
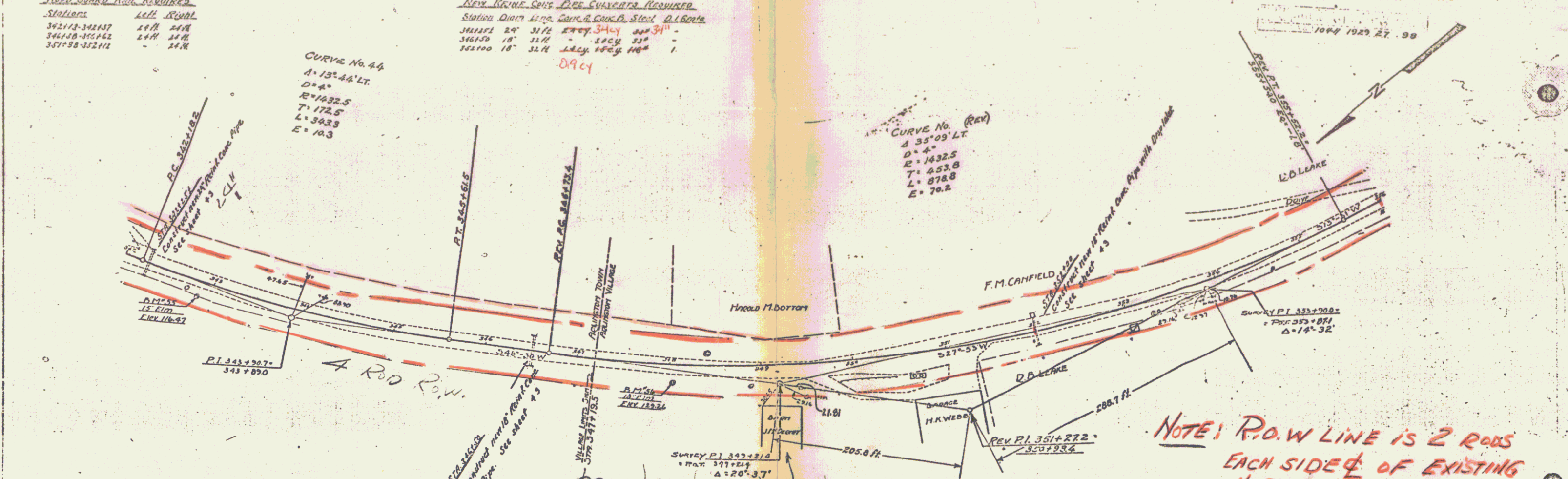
Station	Left	Right
342113-342117	24' 0"	24' 0"
344118-344162	24' 0"	24' 0"
347118-347112	-	24' 0"

**New Right Side Pipe Culverts Required**

Station	Center	Span	Material	Notes
344118	24'	34'	Steel	D.I. Box
346150	18'	32'	Steel	34" x 34"
347100	18'	32'	Steel	34" x 34"

**CURVE No. 44**  
 $\Delta = 13^\circ 44' \text{LT.}$   
 $D = 4^\circ$   
 $R = 1432.5$   
 $T = 172.5$   
 $L = 343.3$   
 $E = 10.3$

**CURVE No. (REV)**  
 $\Delta = 35^\circ 09' \text{LT.}$   
 $D = 4^\circ$   
 $R = 1432.5$   
 $T = 453.6$   
 $L = 878.8$   
 $E = 70.2$



BM 55 SPIKE IN CROTCH OF 15' ELM, 15 FT. RT. OF STA 342+37 - ELEV 116.47  
 BM 56 SPIKE IN CROTCH OF 15' ELM, 12 FT. RT. OF STA 345+13 - ELEV 129.22

SECTIONS F-10 100-A  
 Sheet 17 of 33

JAN 12 1978

992775  
 Replacement