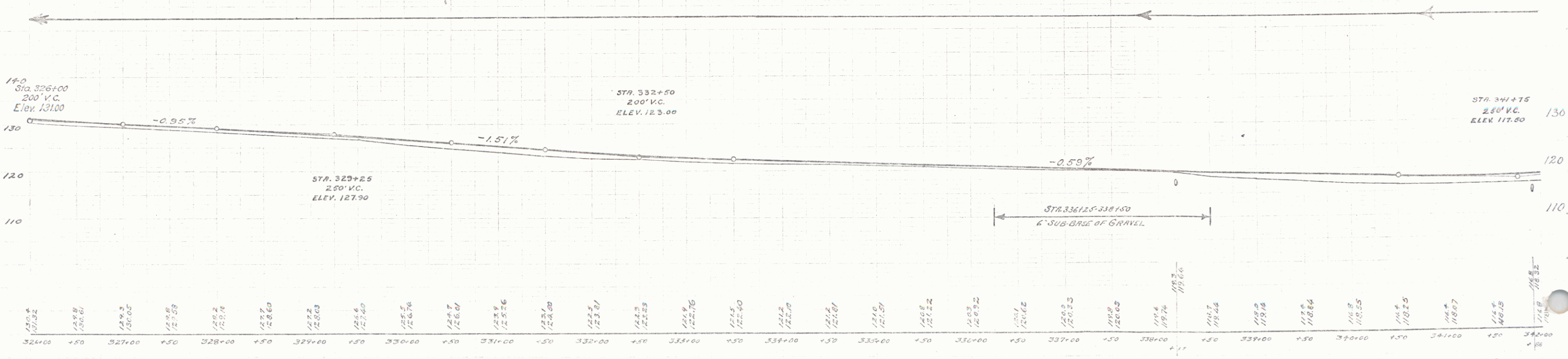
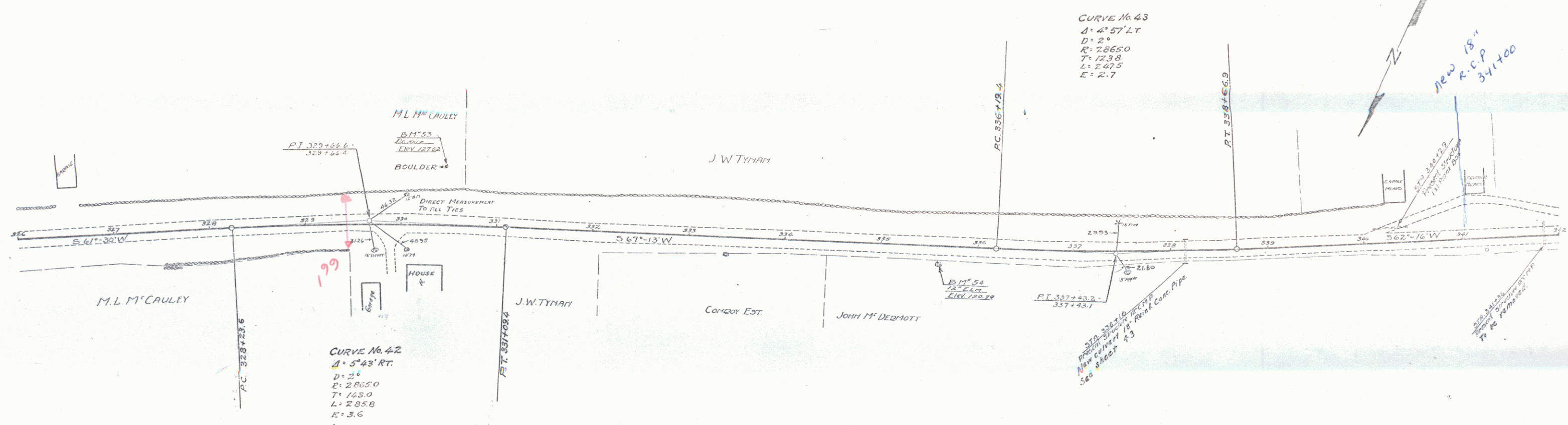


WOOD GUARD RAIL REQUIRED
 Station Left Right
 338+15-338+120 24 ft. 24 ft.

NEW REIN. CONC. PIPE CULVERTS REQUIRED

Station	Diag.	Len.	Conc. B.	Steel
338+17	18"	32 ft.	3.6	3.6
341+00	18"	32 ft.	3.6	3.6



BM 53 - DRILL HOLE IN BOULDER 59' LT. OF STA. 330+48 - ELEV. = 127.02
 BM 54 - SPIKE IN TRUNK OF 12" ELN 16' RT. OF STA. 335+60 - ELEV. = 120.19

SHEET 25 OF 30