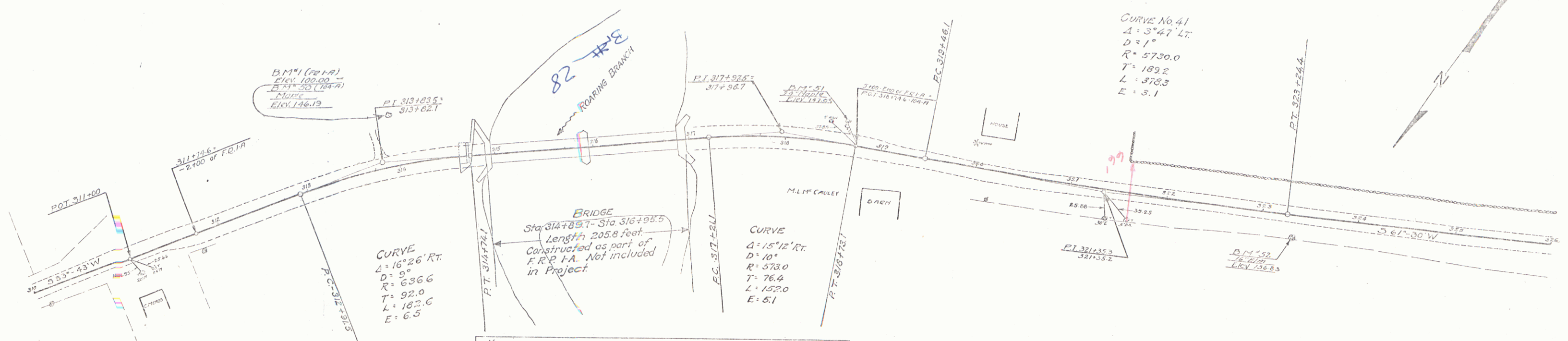
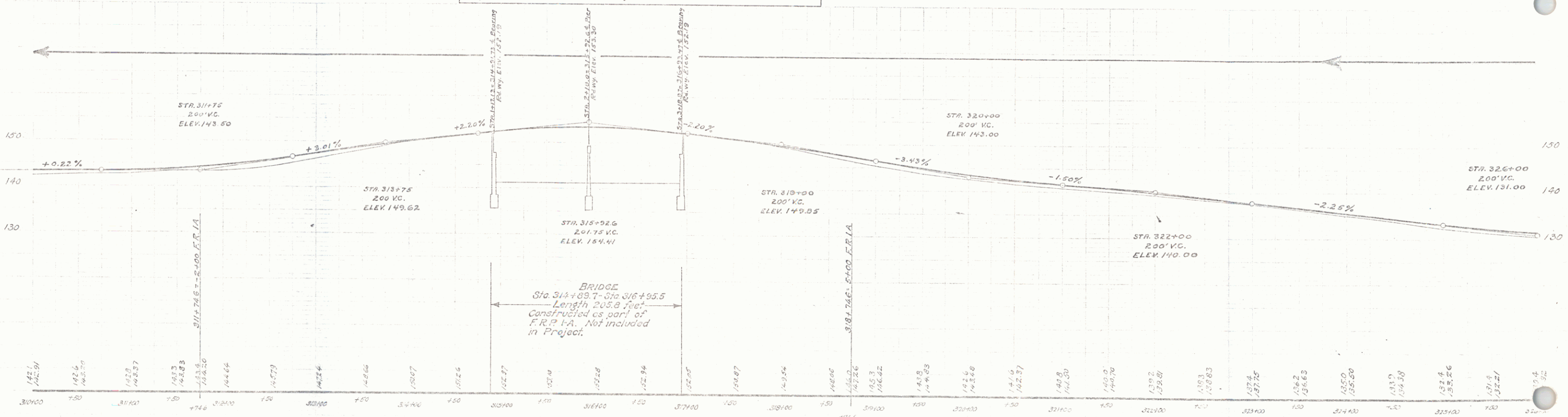


1047 1925 2.5 98



**NOTE:**  
 The grade as shown on this sheet may require the removal by the contractor on Project 104-A, of some material put in the embankments by the contractor on Project F.R. I-A, due to the latter's filling to finished rather than sub-grade elevations.



BM# 50 SPIKE IN FOOT MARK, 75' N. OF STA 1105 - ELEV. 146.19 - BM# 1 OF F.R. I-A. ELEV. 100.00  
 BM# 51 SPIKE IN FOOT MARK, 21' N. OF STA 318+63 - ELEV. 137.03  
 BM# 52 SPIKE IN FOOT MARK, 21' N. OF STA 323+32 - ELEV. 136.03

SECS. E. NO. 104-A  
 SHEET 23 OF 98