

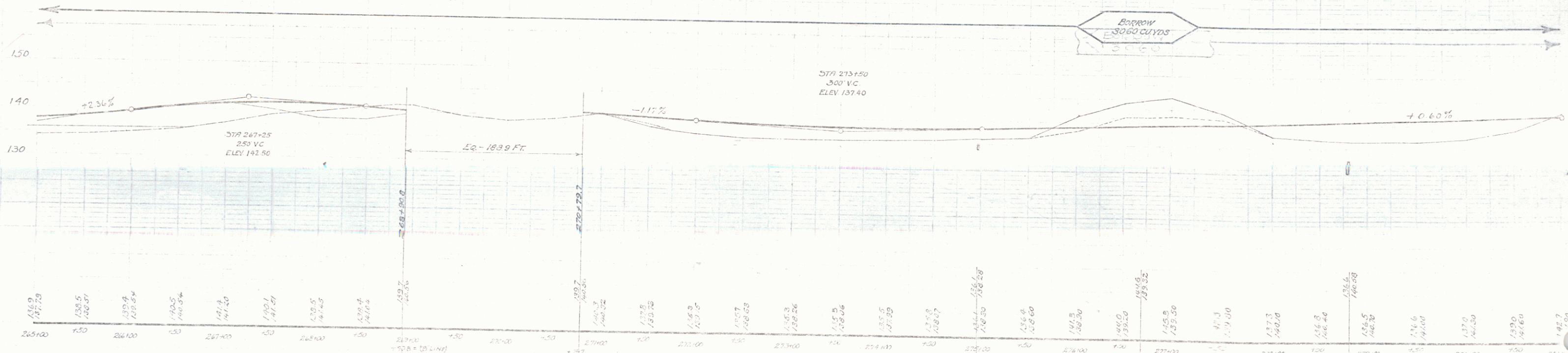
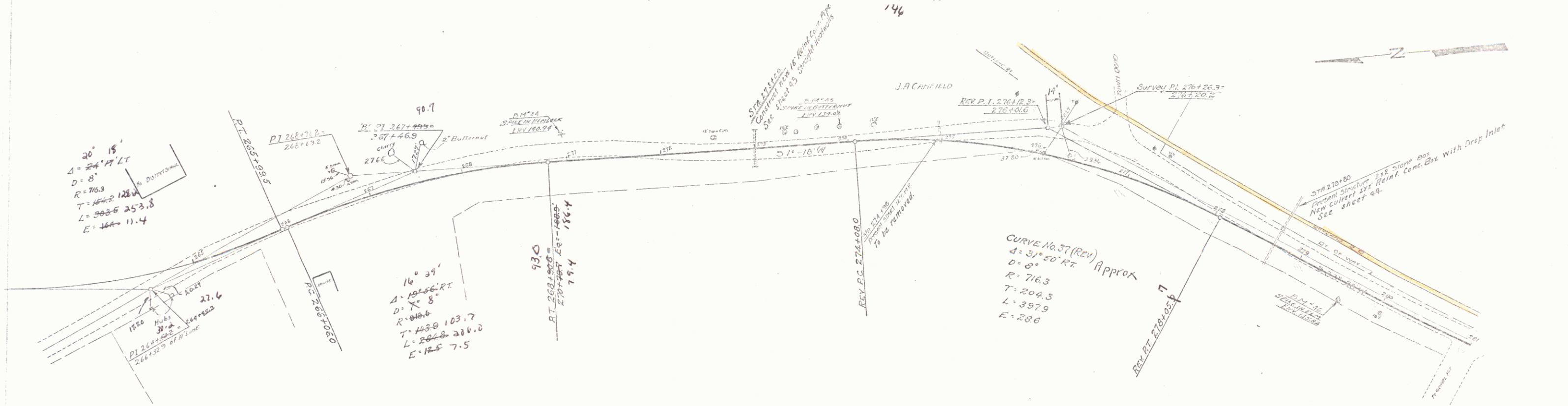
WOOD GUARD RAIL REQUIRED
 Station Left Right
 272+00-273+12 14 ft 14 ft

CABLE GUARD RAIL REQUIRED
 Station Left Right
 272+00-272+70 14 ft 14 ft

NEW FELINE CONC. PIPE CULVERTS REQUIRED
 Station Diam. Leng. Conc. A. Steel
 273+00 18" 34 ft 5.6 34 ft

NEW POINT CONC. BOX CULVERTS REQUIRED
 Station Size Conc. A. Steel P.I. Slope
 278+00 30" R.C.P. Length 40' 14 ft

1949 1928 22 00



BN #44 - SPIKE IN ROOT OF 12" HEMLOCK 26' LT. OF STA. 270+97 - ELEV. 140.94
 BN #45 - SPIKE IN ROOT OF BUTTERNUT 13' LT. OF STA. 273+92 - ELEV. 134.02
 BN #46 - SPIKE IN TRUNK OF 16" ELM 22.5' RT. OF STA. 277+62 - ELEV. 135.02

SECTION 1 TO 100 ft
 SHEET 21 OF 39