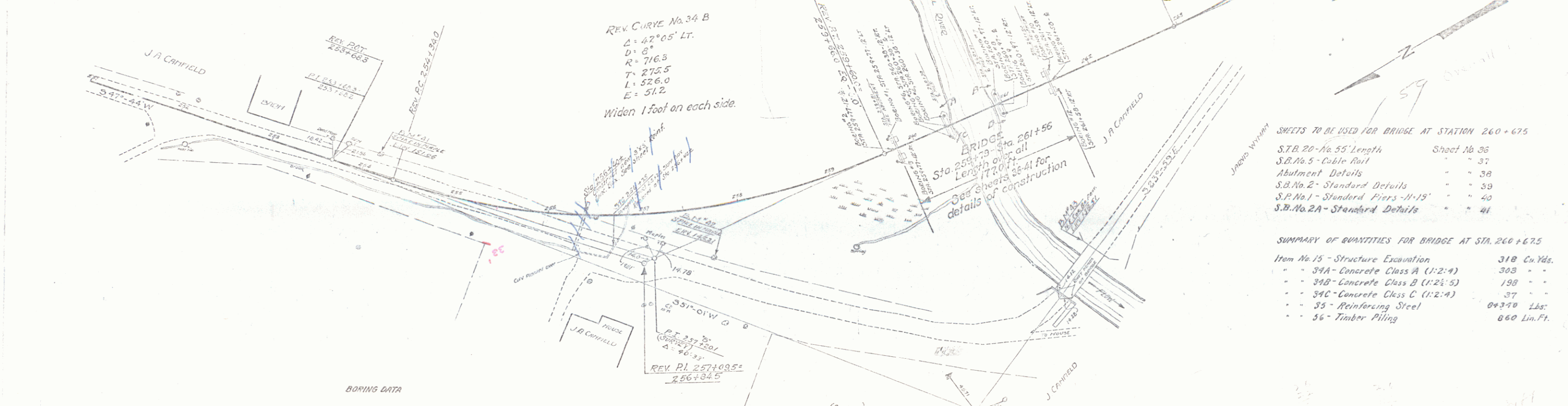


CABLE GUARD RAIL REQUIRED  
 Stations Left Right  
 258+05-263+00 495 ft.  
 258+16-262+39 423'

NEW REINFORCED CONCRETE PILES REQUIRED  
 Size Len. No. Spacing  
 250" dia. 343' 5" 24" 101'  
 Eliminated  
 Period of Installation 3-14-32  
 Grantor M&E Conf. Sheet 7A 2A 24021 11-21-32  
 Recorder  
 Bridge Date

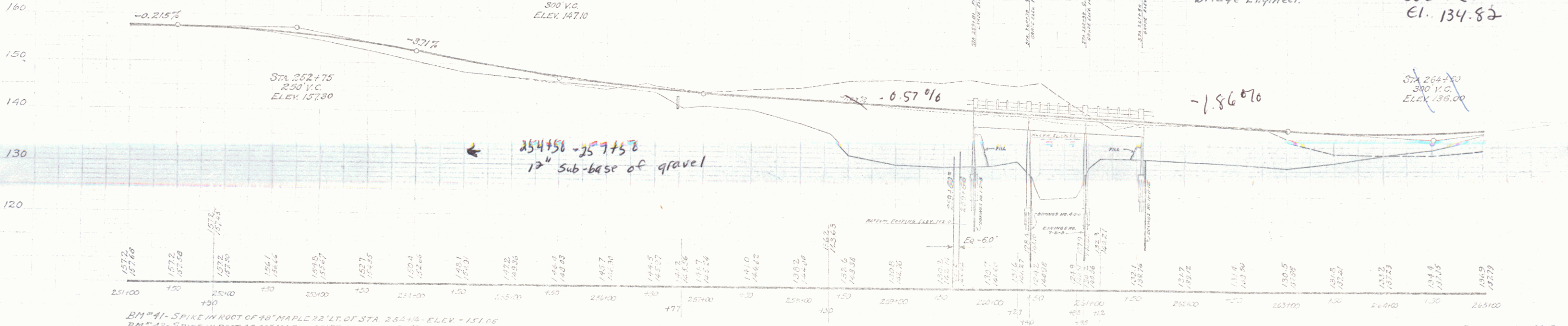


- SHEETS TO BE USED FOR BRIDGE AT STATION 260+675
- S.B. No. 55 - Length Sheet No. 36
  - S.B. No. 5 - Cable Rail - 37
  - Abutment Details - 38
  - S.B. No. 2 - Standard Details - 39
  - S.P. No. 1 - Standard Piers - 40
  - S.B. No. 2A - Standard Details - 41

- SUMMARY OF QUANTITIES FOR BRIDGE AT STA. 260+675
- Item No. 15 - Structure Excavation 318 Cu. Yds.
  - 34A - Concrete Class A (1:2:4) 308 "
  - 34B - Concrete Class B (1:2:5) 198 "
  - 34C - Concrete Class C (1:2:4) 37 "
  - 35 - Reinforcing Steel 84340 Lbs.
  - 56 - Timber Piling 860 Lin. Ft.

BORING DATA

NO. 1	NO. 2	NO. 3	NO. 4	NO. 5	NO. 6	NO. 7	NO. 8	NO. 9	NO. 10	NO. 11	NO. 12
EL. 138.5	EL. 138.5	EL. 138.5	EL. 138.5	EL. 138.5	EL. 138.5	EL. 138.5	EL. 138.5	EL. 138.5	EL. 138.5	EL. 138.5	EL. 138.5
NO. 1	NO. 2	NO. 3	NO. 4	NO. 5	NO. 6	NO. 7	NO. 8	NO. 9	NO. 10	NO. 11	NO. 12



BM #41 - SPIKE IN ROOT OF 48" MAPLE 22' LT. OF STA. 252+45 - ELEV. - 137.06  
 BM #42 - SPIKE IN ROOT OF 48" MAPLE 48' RT. OF STA. 257+50 - ELEV. - 138.21  
 BM #43 - N.E. CORNER OF BRIDGE ABUT. WEST. OF STA. 261+15 2" GALV. PIPE

SECT. ENG. 103-A  
 SHEET 51 OF 50