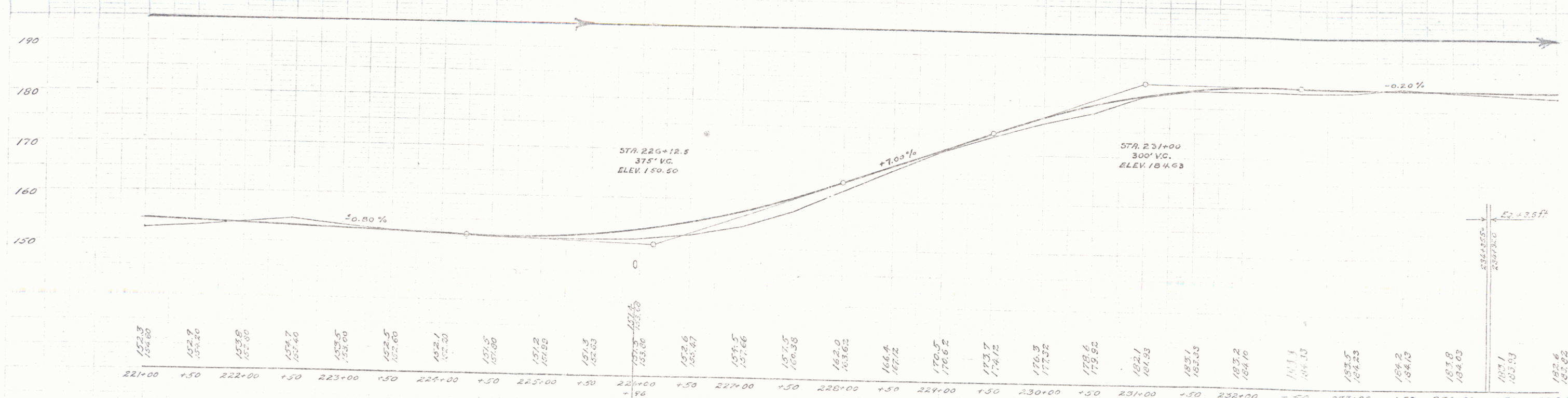
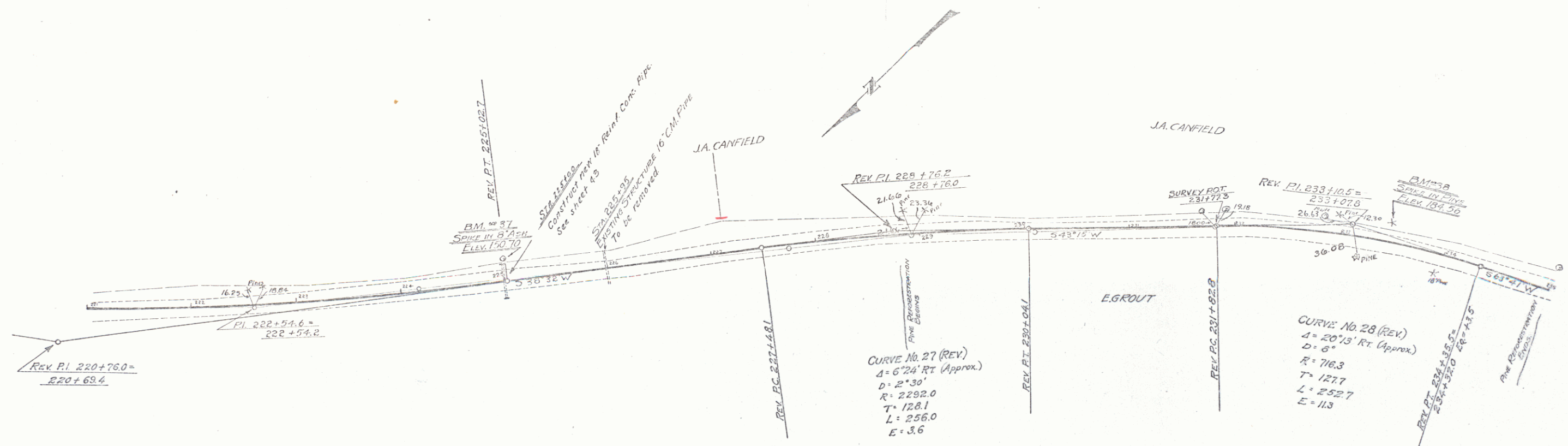


WOOD GUARD RAIL REQUIRED
 Station: 221+00 to 221+12
 Length: 12 ft
 Right Side

CABLE GUARD RAIL REQUIRED
 Station: 225+45 to 276+73
 Length: 128 ft
 Right Side

NEW RAIN CONC PIPE CULVERTS REQUIRED
 Station: 226+00 to 226+12
 Length: 12 ft
 Right Side

1044 1929 22



BM 37 - SPIKE IN TRUNK OF 8" ASH 37' LT. OF STA. 224+95 - ELEV. 150.70.
 BM 38 - SPIKE IN ROOT OF PINE 15' LT. OF STA. 233+44 - ELEV. 184.56.

SERIES F No. 1044
 SHEET 13 OF 25 SHEETS

17