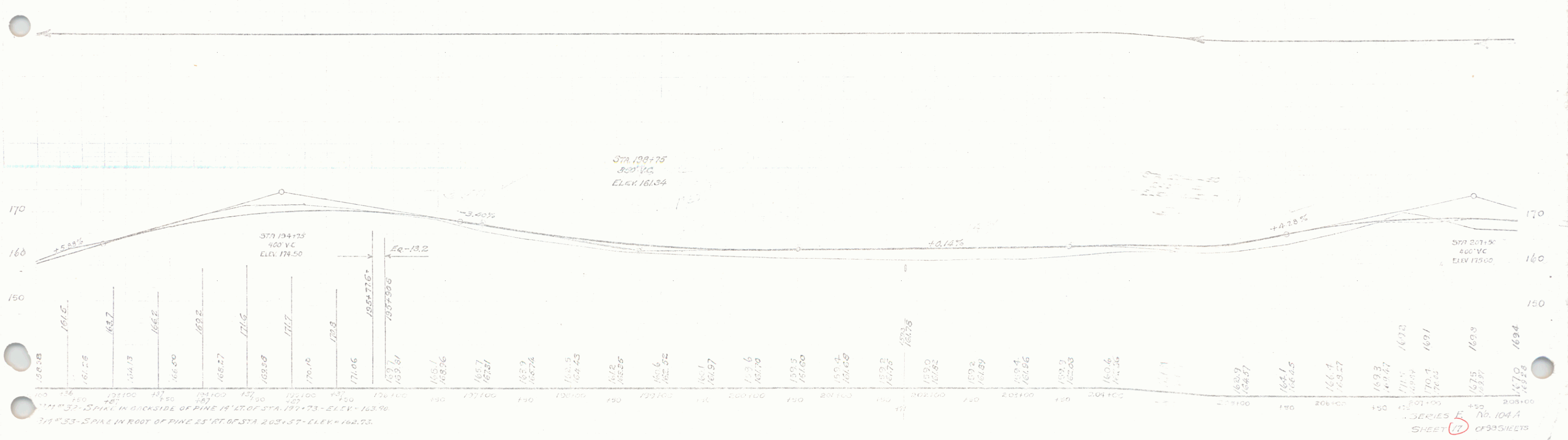
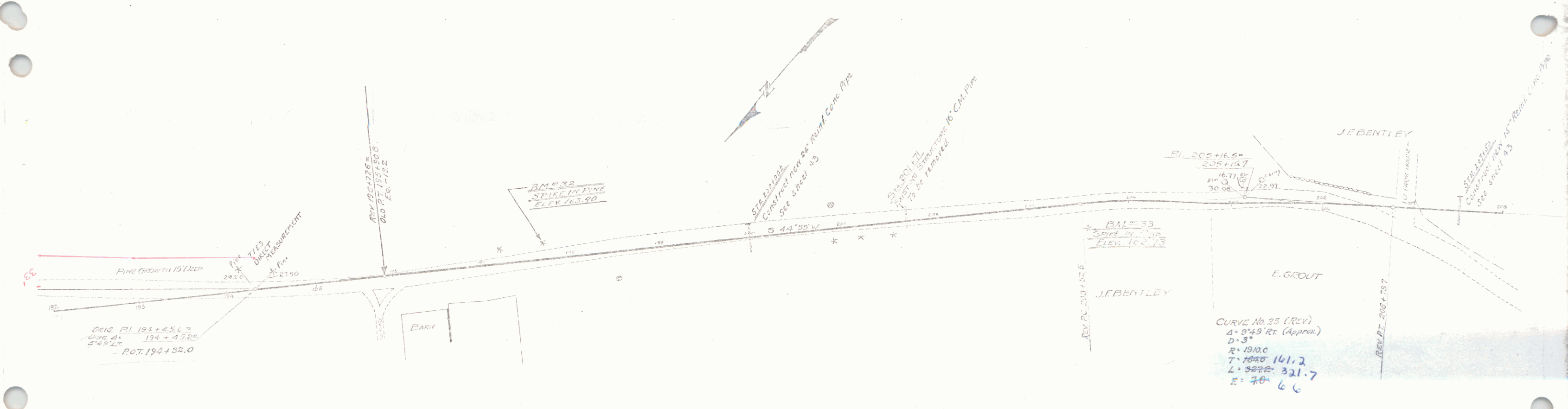


Waco Super Hwy. Required
 Station Left Right
 199+05-200+11 24H 1471

NEW PINE CONE PIPE CULVERTS REQUIRED
 Station Width Depth Spacing Steel Curve
 200+02 20' 14" 3' 3" 50' 10' 2.6:1
 200+09 14' 14" 4.4' 14' 1.7

1952 1953 14 08



3/4" SPIKE IN ROOT OF PINE 15' RT. OF STA. 203+57 - ELEV. 162.73.
 SERIES E No. 104A
 SHEET 17 OF 35 SHEETS
 15