

Wood Guard Rail Required

Stations	Dist	Height
165100-165111	11 ft	14 ft
165112-165155	43 ft	24 ft
172145-172162	17 ft	24 ft
175159-175173	14 ft	24 ft
177182-178100	18 ft	18 ft

New Drainage Pipe Culverts Required

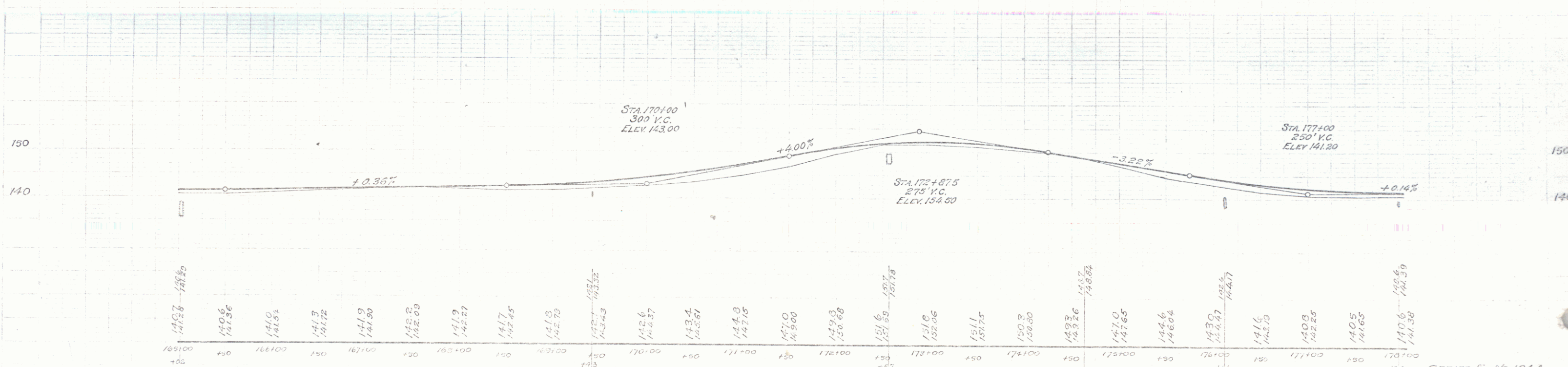
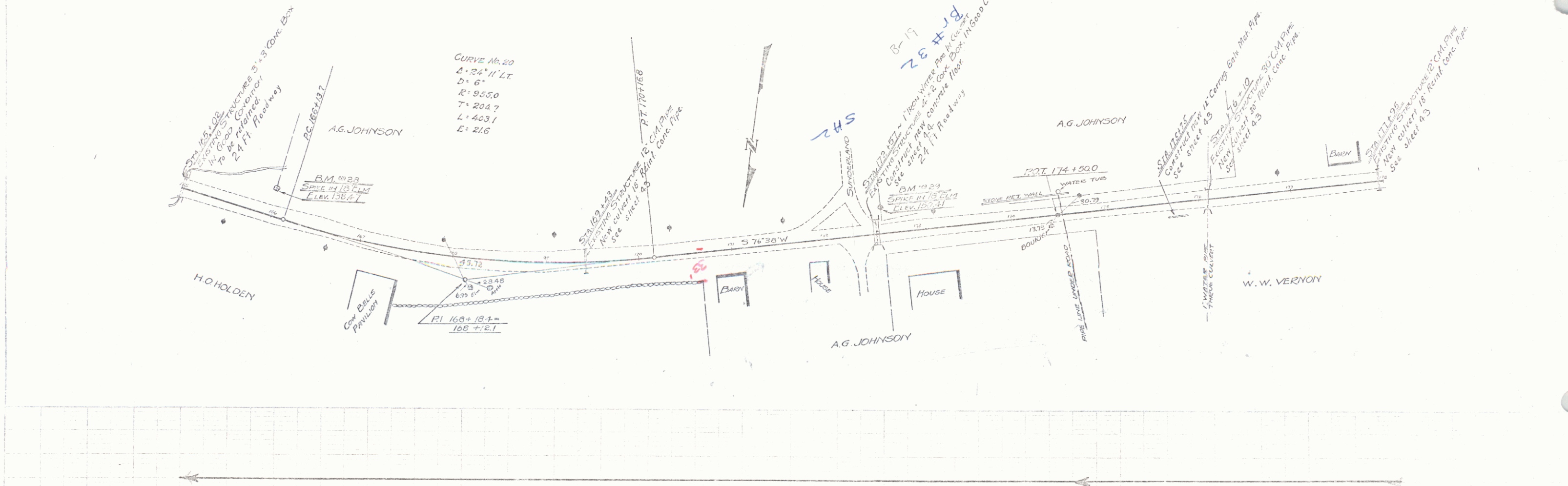
Station	Width	Length	Center	Depth	Material
165143	18"	35 ft	34'	3'	Steel
176109	30"	35 ft	34'	3'	34"
177195	18"	32 ft	34'	3'	34"

Culvert Pitches Required

Station	Slope	Type	Notes
172160	1:2	Box	24 C.Y.

New Driveway Pipe Culverts Required

Station	Diam	Length	Center	Depth	Material
175175	12"	16 ft	14 C.Y.		



2 1/4" x 28" SPIKE IN ROOT OF 18" x 24" AT STA. 165+77 - ELEV. = 138.27
 BM 2-9 SPIKE IN ROOT OF 18" x 24" AT STA. 172+64 - ELEV. = 150.41

13