

WOOD GUARD RAIL REQUIRED

Stations	Left	Right
123+51-123+75	24'4"	24'4"
131+32-131+52		22'6"

CABLE GUARD RAIL REQUIRED

Stations	Left	Right
127+30-127+54	24'4"	
130+10-131+14		10'4"
131+47-136+35	48'8"	
137+52-133+52		20'0"

NEW 12" CONC. PIPE CULVERTS REQUIRED

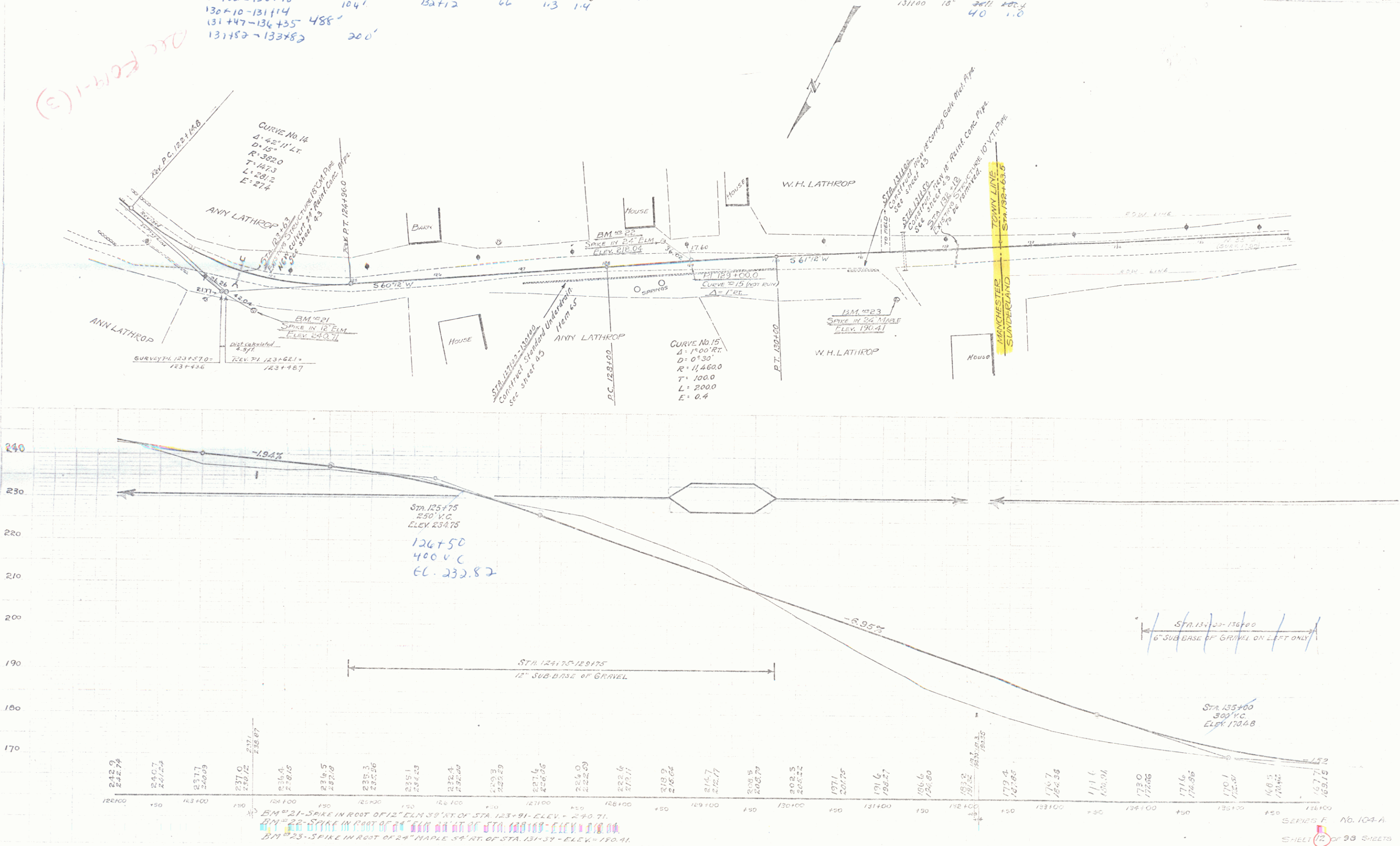
Station	Width	Length	Grade	Conc. Pipe	Conc. Steel
123+13	24"	20'	2.7%	24"	22' 17"
131+52	18"	20'	2.7%	300'	
132+12	66"	1.3'	1.4%		

NEW DRIVEWAY PIPE CULVERTS REQUIRED

Station	Width	Length	Grade	Conc. Pipe	Conc. Steel
131+00	18"	20'	2.7%	40'	1.0'

104-A 1929 12 59

ACC FORM-1 (3)



20 DEC 1929
20 DEC 1929
A.M. LATHROP

BM #21 - SPIKE IN ROOT OF 12" ELM 39' RT. OF STA. 123+91 - ELEV. 240.71.
BM #22 - SPIKE IN ROOT OF 24" ELM 34' RT. OF STA. 127+19 - ELEV. 234.75.
BM #23 - SPIKE IN ROOT OF 24" MAPLE 34' RT. OF STA. 131+39 - ELEV. 170.41.

SERIES F No. 104-A
SHEET 12 OF 38 SHEETS