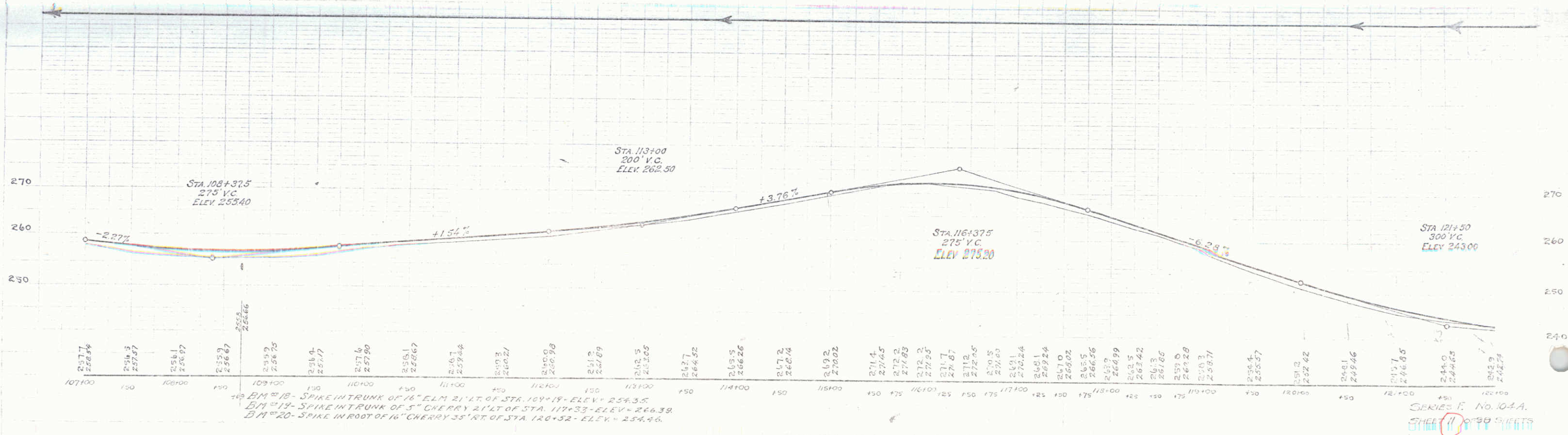
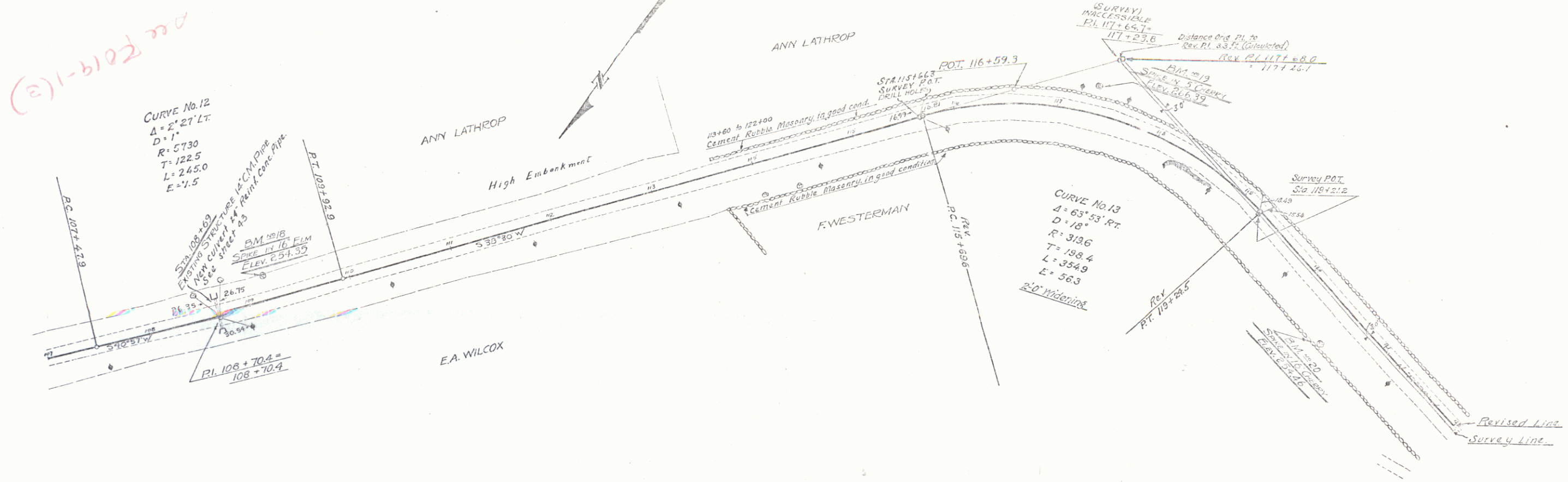


WOOD GUARD RAIL REQUIRED  
 Stations Left Right  
 108+57 108+81 24 24 ft

CEMENT GUARD RAIL REQUIRED  
 Stations Left Right  
 107+75 108+95 96 ft

NEW PUMP CONCRETE PIPE CULVERTS REQUIRED  
 Station Diam. Amp. Conc. ft. Slope  
 108+60 24 24" 11 44" 3.4



Jan. 1925  
 A.C. DILL  
 P.M. Engineer

BM #18 - SPIKE IN TRUNK OF 16" ELM 21' LT. OF STA. 109+19 - ELEV. 254.32  
 BM #19 - SPIKE IN TRUNK OF 5" CHERRY 21' LT. OF STA. 117+33 - ELEV. 266.39  
 BM #20 - SPIKE IN ROOT OF 16" CHERRY 35' RT. OF STA. 120+32 - ELEV. 254.46

SERIES F. NO. 104.A.  
 SHEET 11 OF 30 SHEETS