

WOOD GUARD RAIL REQUIRED

Station	Left	Right
36169-36193	24'11"	24'11"
100107-100131	24'11"	24'11"

CABLE GUARD RAIL REQUIRED

Station	Left	Right
32100-32107	8'9"	8'9"
32108-32112-12	45'11"	45'11"
101104-101106	22'4"	22'4"
101154-101154	200'	200'

NEW REINFORCED CONCRETE PIPE CURVERTS REQUIRED

Station	Diam.	Length	Size
96180	18"	33'	34"
100118	18"	24'	34"

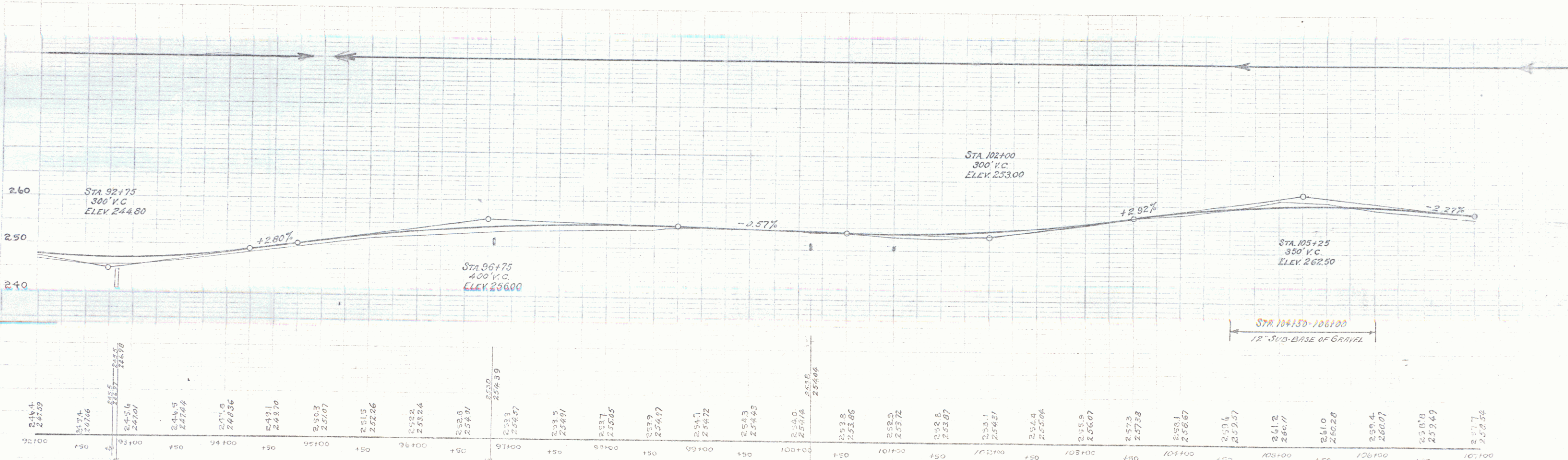
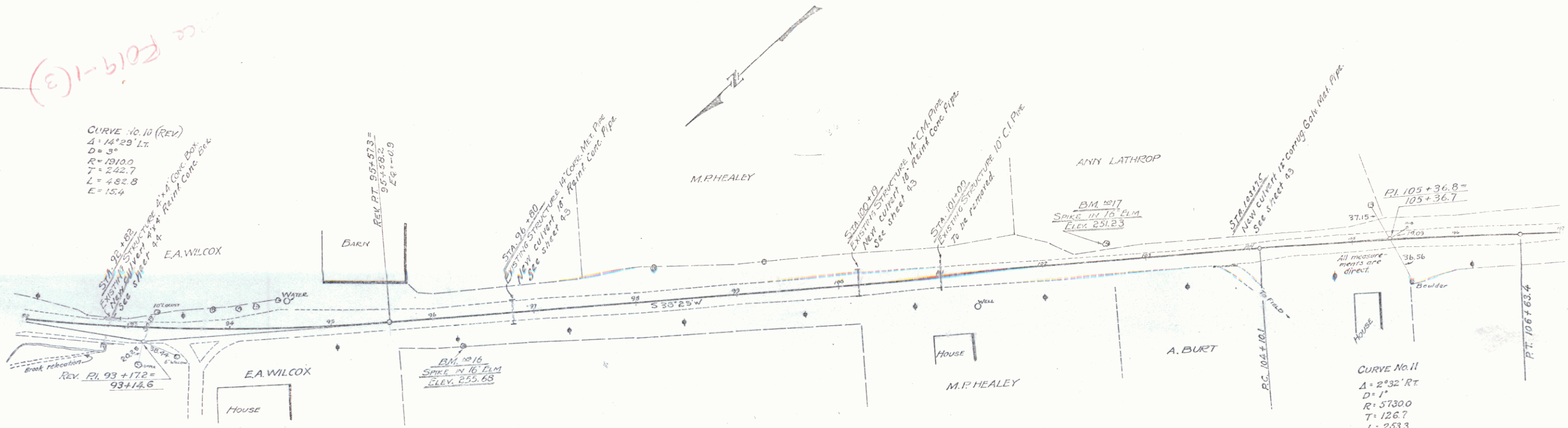
NEW REINFORCED CONCRETE PIPE CURVERTS REQUIRED

Station	Size	Cons. S.	Steel
52181	4'x4'	2.2 c.y.	333#

NEW DRAINAGE PIPE CURVERTS REQUIRED

Station	Right	Diam.	Length	Cons. S.	Steel
103175	12"	10'	10 c.y.	20	

Curve No. 10 (REV)  
 Δ = 14°29' Lx  
 D = 3"  
 R = 1310.0  
 T = 242.7  
 L = 432.8  
 E = 15.4



BM #16 - SPIKE IN FOOT OF 16" ELM ON RT. - ELEV = 253.68.  
 BM #17 - SPIKE IN FOOT OF 16" ELM ON LT. OF STA. 102+62 - ELEV = 251.23.

SERIES F. No. 104A.  
 SHEET 10 OF 20 SHEETS