

CABLE GUARD RAIL REQUIRED

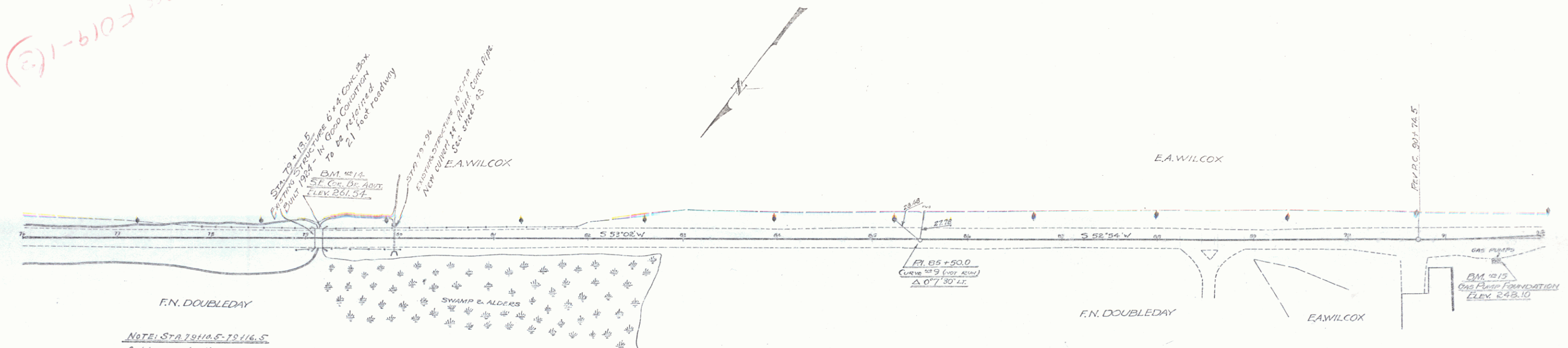
Stations	Left	Right
77+00-78+10	24	24
78+10-78+75	24	24
78+75-80+14	24	24
80+14-82+00	24	24
82+00-84+00	24	24
84+00-86+00	24	24
86+00-88+00	24	24
88+00-90+00	24	24
90+00-92+00	24	24
92+00-94+00	24	24
94+00-96+00	24	24
96+00-98+00	24	24
98+00-100+00	24	24

NEW BRIDGE CONC. PIPE GUARDS REVISION

Station	Diam.	Length	Chgs.	Steel	Soth
78+10	24	36H	24	24	24
	30		3.0		

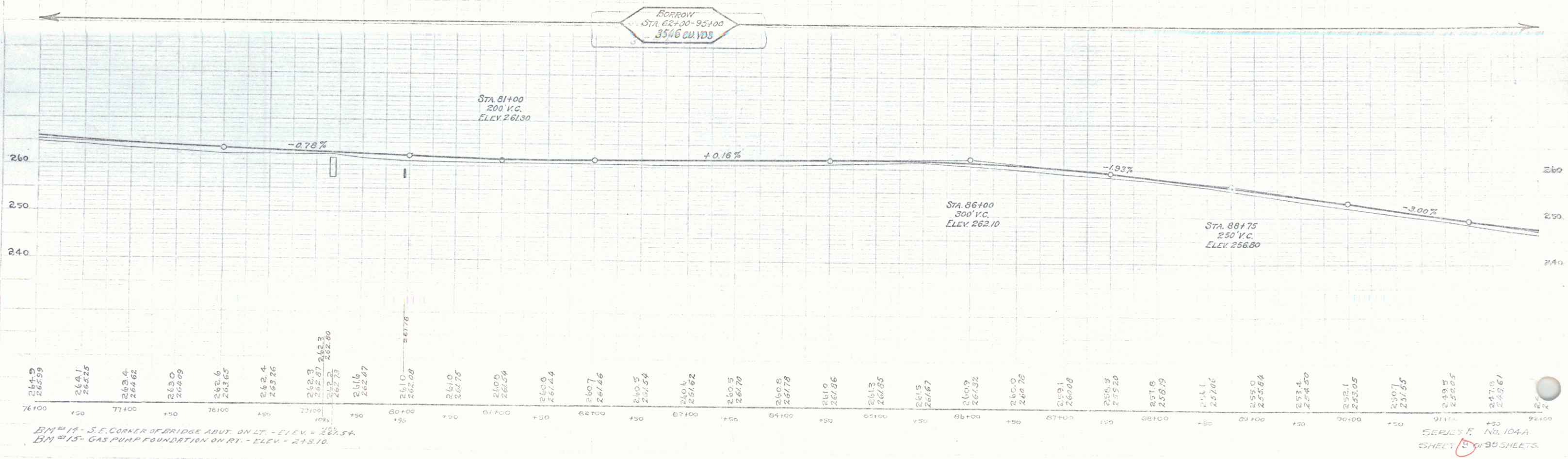
104A 1929 9 30

ALL F019-1(3)



NOTE: STA. 79+45-79+16.5  
 Cable guard rail on right shall be fastened to bridge rail by the contractor, charge for this item shall be included in the bid price per foot for Cable Guard Rail.

BORROW  
 STA 62+00-95+00  
 3546 CU YDS



BM #14 - S.E. CORNER OF BRIDGE ABUT. ON LT. - ELEV. = 263.54  
 BM #15 - GAS PUMP FOUNDATION ON RT. - ELEV. = 248.10

SERIES No. 104A  
 SHEET 15 OF 30 SHEETS.